

Legend:

- Ticket / Retail
- Team Facilities
- Services
- Vertical Circulation
- Staff Facilities
- Media / Officials
- Store / Medical
- F&B / Bar
- Kitchen
- W.C.
- Circulation
- Members

HOK
SPORT architecture
 BRISBANE
 116 Adelaide Street,
 Brisbane QLD
 t: +61 (0)7 3859 9155
 f: +61 (0)7 3859 9188
 www.hok.com.au
 email: sport@hok.com.au

Jasmax Ltd
 65 Upper Queen Street
 PO Box 6648
 Auckland
 New Zealand
 t: +64 9 306 9626
 f: +64 9 306 9626
 www.jasmax.com

Jasmax
 ARCHITECTS
 INTERIOR DESIGNERS
 LANDSCAPE ARCHITECTS

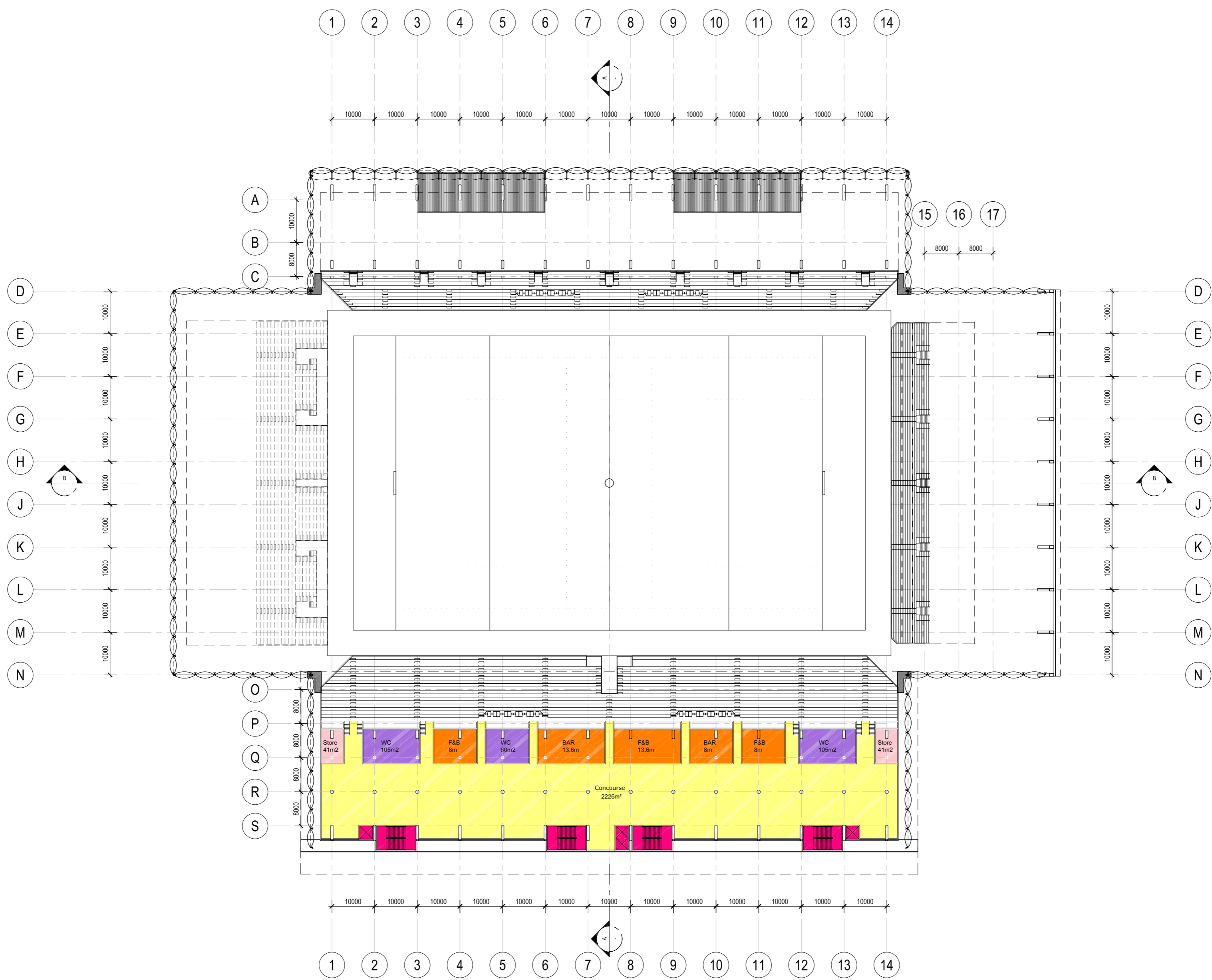
Consultant Team
 ARCHITECTS: JASMAX LTD / HOK
 STRUCTURAL ENGINEER: SKM
 MECHANICAL ENGINEER: BECA
 TRAFFIC ENGINEER: BECA
 CIVIL ENGINEER: BECA
 SURVIVOR: BECA
 URBAN DESIGN: BECA
 FIRE ENGINEER: BECA
 PROJECT MANAGER: ARROW

NOTES:
 REVISIONS:
 01 14.09.2007 Issue for Costing and Concept
 02 25.09.2007 Issue for Costing and Concept
 03 28.09.2007 Issue for Concept Design Report
 04 04.10.2007 Issue for MEL Consultants Design Report
 05 04.10.2007 Issue for MEL Consultants Design Report
 06 21.11.2007 Issue for Concept Design Report

For Jasmax Limited
 DESIGN: Designer
 DRAWN: Author
 CHECKED: Checker
 APPROVED: Approver

PROJECT: DUNEDIN MULTI-PURPOSE STADIUM
 NUMBER: 206000
 AVATEA STREET, DUNEDIN
 SHEET: Level 01
 Floor Plan
 SCALE @ A1=1:500

REVISION & DATE
 FIRST ISSUED
 RESOURCE CONSENT
 BUILDING CONSENT
 ENGINEERING
 ELECTRICAL
 COPYRIGHT © Jasmax Limited
 DO NOT SCALE OFF THIS DRAWING
 CONTRACTOR MUST VERIFY ALL DIMENSIONS ON
 SITE BEFORE COMMENCING ANY WORK
 DRAWING No. ASK-101
 REVISION: 06



- Ticket / Retail
- Team Facilities
- Service
- Vertical Circulation
- Staff Facilities
- Media / Officials
- Store / Medical
- F&B / Bar
- Kitchen
- W.C.
- Circulation
- Members

HOK
 sport architecture
 ABN 55 072 891 993
 BRISBANE
 418 Adelaide Street,
 GPO Box 5290
 BRISBANE QLD
 AUSTRALIA
 t: +61(0)7 3839 9155
 f: +61 (0)7 3839 9188

Jasmax Ltd
 65 Upper Queen Street
 PO Box 6548
 Auckland
 New Zealand
 t: +64 9 366 9626
 78 Victoria Street
 Level 4, Dominion Building
 PO Box 11442
 Wellington
 New Zealand
 t: +64 4 499 3011
 www.jasmax.com

Jasmax
 ARCHITECTS
 INTERIOR DESIGNERS
 LANDSCAPE ARCHITECTS

Consultant Team
 ARCHITECTS: JASMAX LTD / HOK
 STRUCTURAL ENGINEER: SKM
 MECHANICAL ENGINEER: -
 ESD CONSULTANT: -
 TRAFFIC ENGINEER: BECA
 CIVIL ENGINEER: -
 SURVEYOR: -
 URBAN DESIGN: -
 FIRE ENGINEER: -
 PROJECT MANAGER: ARROW

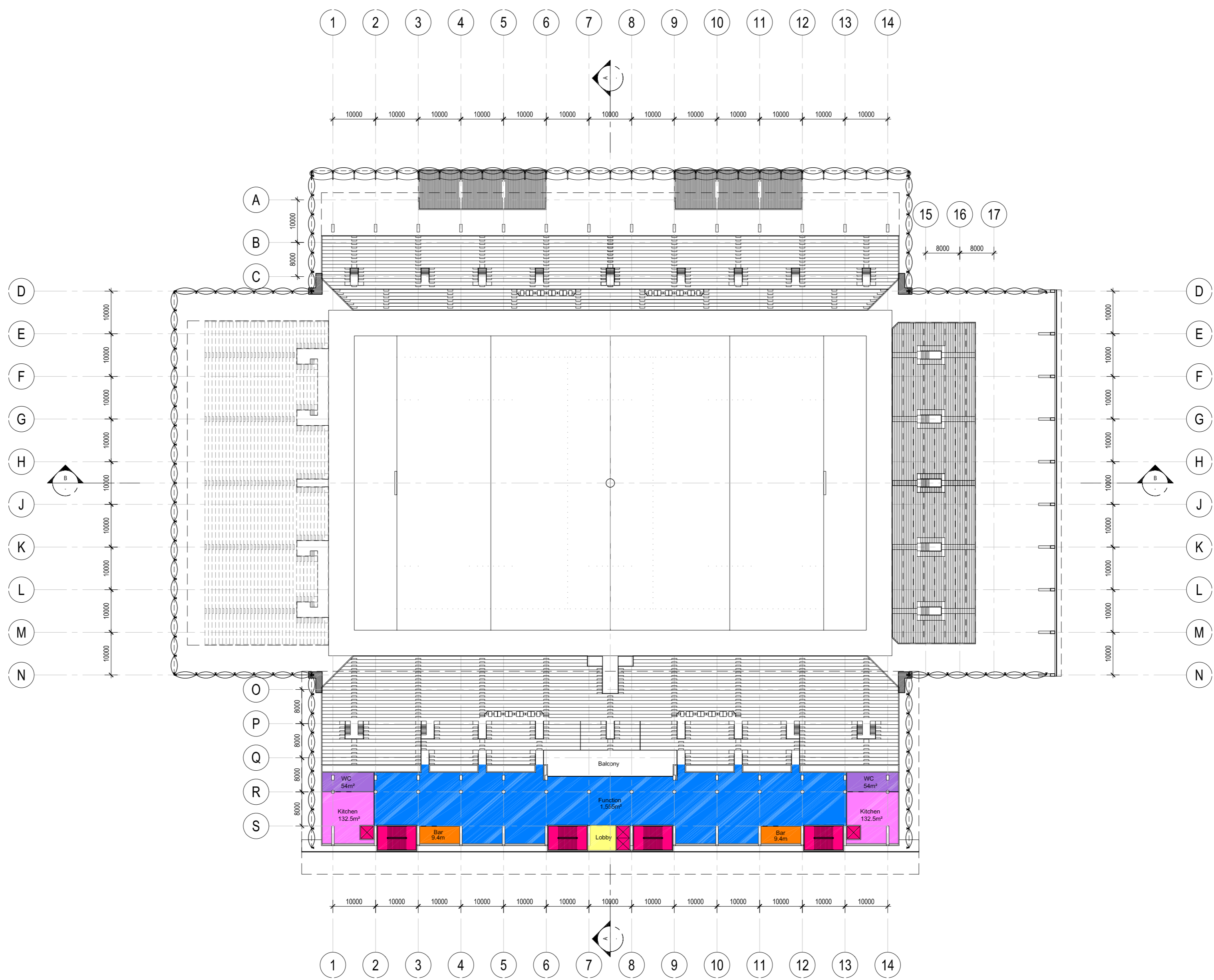
NOTES:

REVISIONS
 01 14.09.2007 Issue for Costing
 02 25.09.2007 Issue for Costing and Concept Design Report
 03 28.09.2007 Issue for Concept Design Report
 04 04.10.2007 Issue for M&E Consultation
 05 07.11.2007 Issue for Concept Design Report
 06 21.11.2007 Issue for Concept Design Report

For Jasmax Limited
 DESIGN Designer
 DRAWN Author
 CHECKED Checker
 APPROVED Approver

PROJECT NUMBER: 206000
DUNEDIN MULTI-PURPOSE STADIUM
AWATEA STREET, DUNEDIN
 SHEET
Level 02
Floor Plan
 SCALE @ A1=1:500

ARCHITECTURAL
 MILESTONE ISSUES REVISION & DATE
 FIRST ISSUED -1-
 RESOURCE CONSENT -1-
 BUILDING CONSENT -1-
 SCHEDULING -1-
 TENDER -1-
 COPYRIGHT © Jasmax Limited
 DO NOT SCALE OFF THIS DRAWING.
 SIZE FACTOR MUST VERIFY ALL DIMENSIONS ON
 SITE BEFORE COMMENCING ANY WORK.
 DRAWING NO. REVISION
ASK-102 06



- Ticket / Retail
- Team Facilities
- Service
- Vertical Circulation
- Staff Facilities
- Media / Officials
- Store / Medical
- F&B / Bar
- Kitchen
- W.C.
- Circulation
- Members

HOK
sport architecture
ABN 55 072 891 933
BRISBANE
419 Stidside Street,
GPO Box 5290
Brisbane QLD
AUSTRALIA
T: +61(0)7 3839 9155
F: +61(0)7 3839 9188

Jasmax Ltd
65 Upper Queen Street
PO Box 6648
Auckland
New Zealand
t: +64 9 366 9626
78 Victoria Street
Level 4, Dominion Building
PO Box 11442
Wellington
New Zealand
t: +64 4 499 3011
www.jasmax.com



Consultant Team
ARCHITECTS: JASMAX LTD / HOK
STRUCTURAL ENGINEER: SKM
MECHANICAL ENGINEER: -
ESD CONSULTANT: BECA
TRAFFIC ENGINEER: -
SURVEYOR: -
URBAN DESIGNER: -
FIRE ENGINEER: -
PROJECT MANAGER: ARROW

NOTES:

REVISIONS

01	14.09.2007	Issue for Costing
02	25.09.2007	Issue for Costing and Concept Design Report
03	28.09.2007	Issue for Concept Design Report
04	04.10.2007	Issue for M&E Consultants
05	07.11.2007	Issue for Concept Design Report
06	21.11.2007	Issue for Concept Design Report

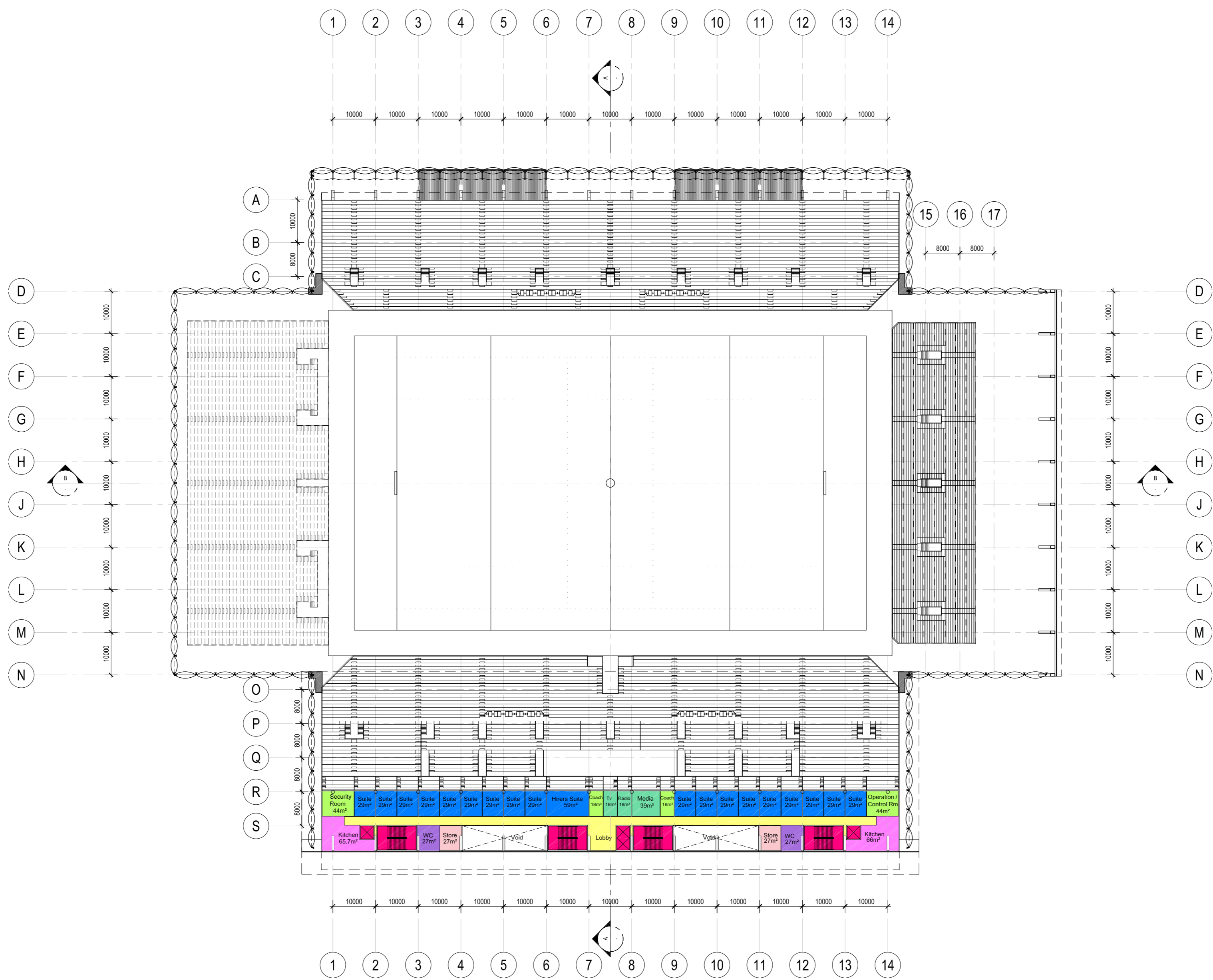
For Jasmax Limited
DESIGN: Designer
DRAWN: Author
CHECKED: Checker
APPROVED: Approver

PROJECT NUMBER: 206000
DUNEDIN MULTI-PURPOSE STADIUM
AWATEA STREET, DUNEDIN
ARCHITECTURAL
SHEET
Level 03
Floor Plan
SCALE @ A1=1:500

MEASUREMENT	REVISION & DATE
FIRST ISSUED	<-1
RESOURCE CONSENT	<-1
BUILDING CONSENT	<-1
SCHEDULING	<-1
TENDER	<-1

COPYRIGHT © Jasmax Limited
DO NOT SCALE OFF THIS DRAWING
CONTRACTOR MUST VERIFY ALL DIMENSIONS ON SITE BEFORE COMMENCING ANY WORK.

DRAWING NO: ASK-103
REVISION: 06



- Ticket / Retail
- Team Facilities
- Service
- Vertical Circulation
- Staff Facilities
- Media / Officials
- Store / Medical
- F&B / Bar
- Kitchen
- W.C.
- Circulation
- Members

HOK
sport architecture

ABN 55 072 891 993
BRISBANE
415 Adelaide Street,
GPO Box 5290
Brisbane QLD
AUSTRALIA
t: +61(0)7 3839 9155
f: +61(0)7 3839 9188

www.hok.com
enb@sport.au@hok.com.au

Jasmax Ltd
65 Upper Queen Street
PO Box 6648
Auckland
New Zealand
t: +64 9 366 9526
78 Victoria Street
Level 4, Dominion Building
PO Box 11442
Wellington
New Zealand
t: +64 4 499 3011
www.jasmax.com



ARCHITECTS
INTERIOR DESIGNERS
LANDSCAPE ARCHITECTS

Consultant Team
ARCHITECTS: JASMAX LTD / HOK
STRUCTURAL ENGINEER: SKM
MECHANICAL ENGINEER: -
ESD CONSULTANT: BECA
TRAFFIC ENGINEER: -
CIVIL ENGINEER: -
SURVEYOR: -
URBAN DESIGNER: -
FIRE ENGINEER: -
PROJECT MANAGER: ARROW

NOTES:

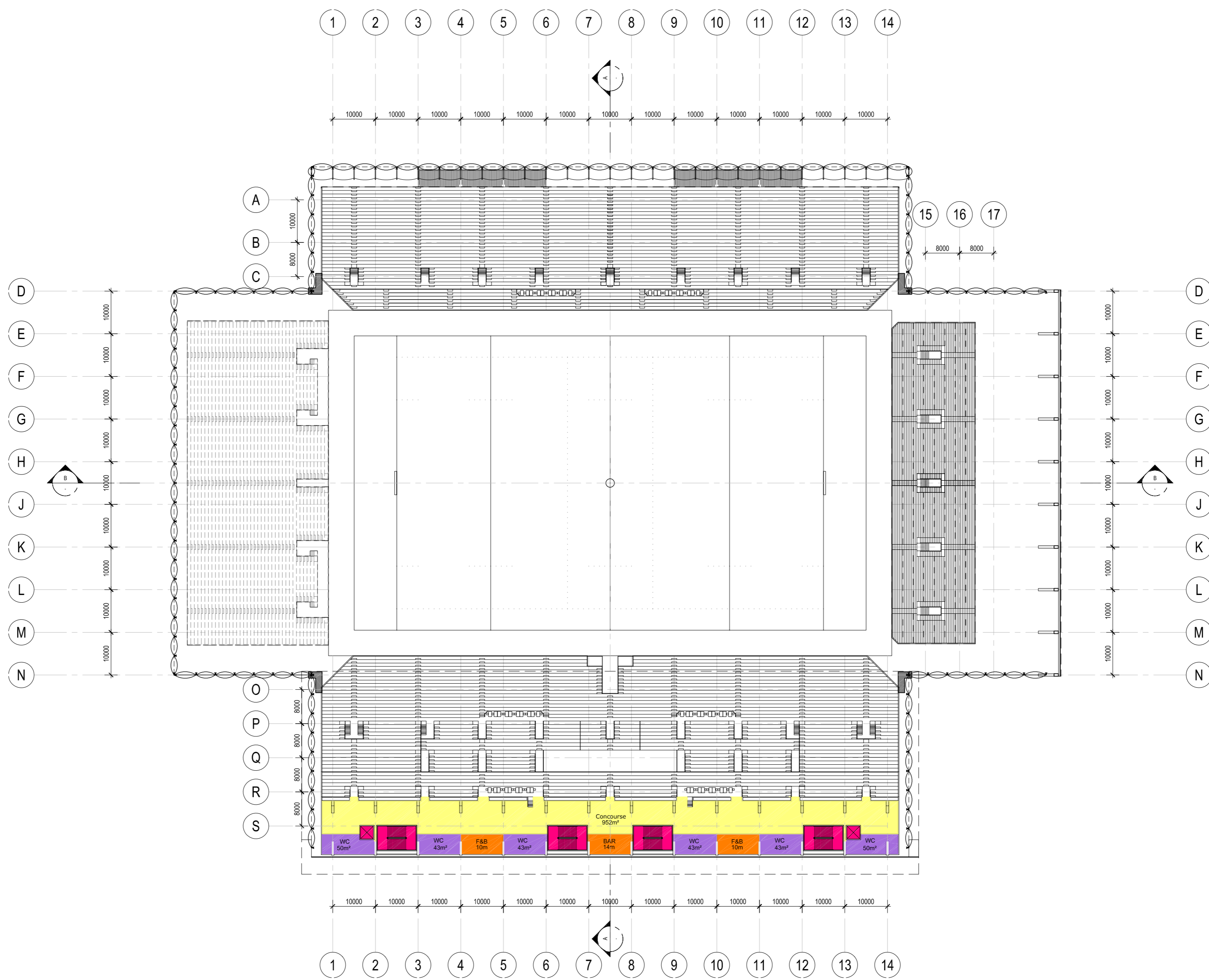
REVISIONS
01 14.09.2007 Issue for Costing
02 25.09.2007 Issue for Costing and Concept Design Report
03 28.09.2007 Issue for Concept Design Report
04 04.10.2007 Issue for R.E.L. Comments
05 07.11.2007 Issue for Concept Design Report
06 21.11.2007 Issue for Concept Design Report

For Jasmax Limited
DESIGN Designer
DRAWN Author
CHECKED Checker
APPROVED Approver

ARCHITECTURAL

PROJECT NUMBER: 206000
DUNEDIN MULTI-PURPOSE STADIUM
AWATEA STREET, DUNEDIN
SHEET
Level 04
Floor Plan
SCALE @ A1=1:500

MILESTONE ISSUES
FIRST ISSUED ->
RESOURCE CONSENT ->
BUILDING CONSENT ->
SCHEDULING ->
TENDER ->
COPYRIGHT © Jasmax Limited
DO NOT SCALE OFF THIS DRAWING
CONTRACTOR MUST VERIFY ALL DIMENSIONS ON SITE BEFORE COMMENCING ANY WORK.
DRAWING NO: ASK-104
REVISION
06



- Ticket / Retail
- Team Facilities
- Service
- Vertical Circulation
- Staff Facilities
- Media / Officials
- Store / Medical
- F&B / Bar
- Kitchen
- W.C.
- Circulation
- Members

HOK
sport architecture

ABN 55 072 891 993
BRISBANE
415 Adelaide Street,
GPO Box 5290
Brisbane QLD
AUSTRALIA
t: +61(0)7 3839 9155
f: +61(0)7 3839 9188

www.hok.com
enb@sport.au@hok.com.au

Jasmax Ltd
65 Upper Queen Street
PO Box 6648
Auckland
New Zealand
t: +64 9 366 9526
78 Victoria Street
Level 4, Dominion Building
PO Box 11442
Wellington
New Zealand
t: +64 4 499 3011
www.jasmax.com



ARCHITECTS
INTERIOR DESIGNERS
LANDSCAPE ARCHITECTS

Consultant Team
ARCHITECTS: JASMAX LTD / HOK
STRUCTURAL ENGINEER: SKM
MECHANICAL ENGINEER: -
ESD CONSULTANT: BECA
TRAFFIC ENGINEER: -
CIVIL ENGINEER: -
SURVEYOR: -
URBAN DESIGNER: -
FIRE ENGINEER: -
PROJECT MANAGER: ARROW

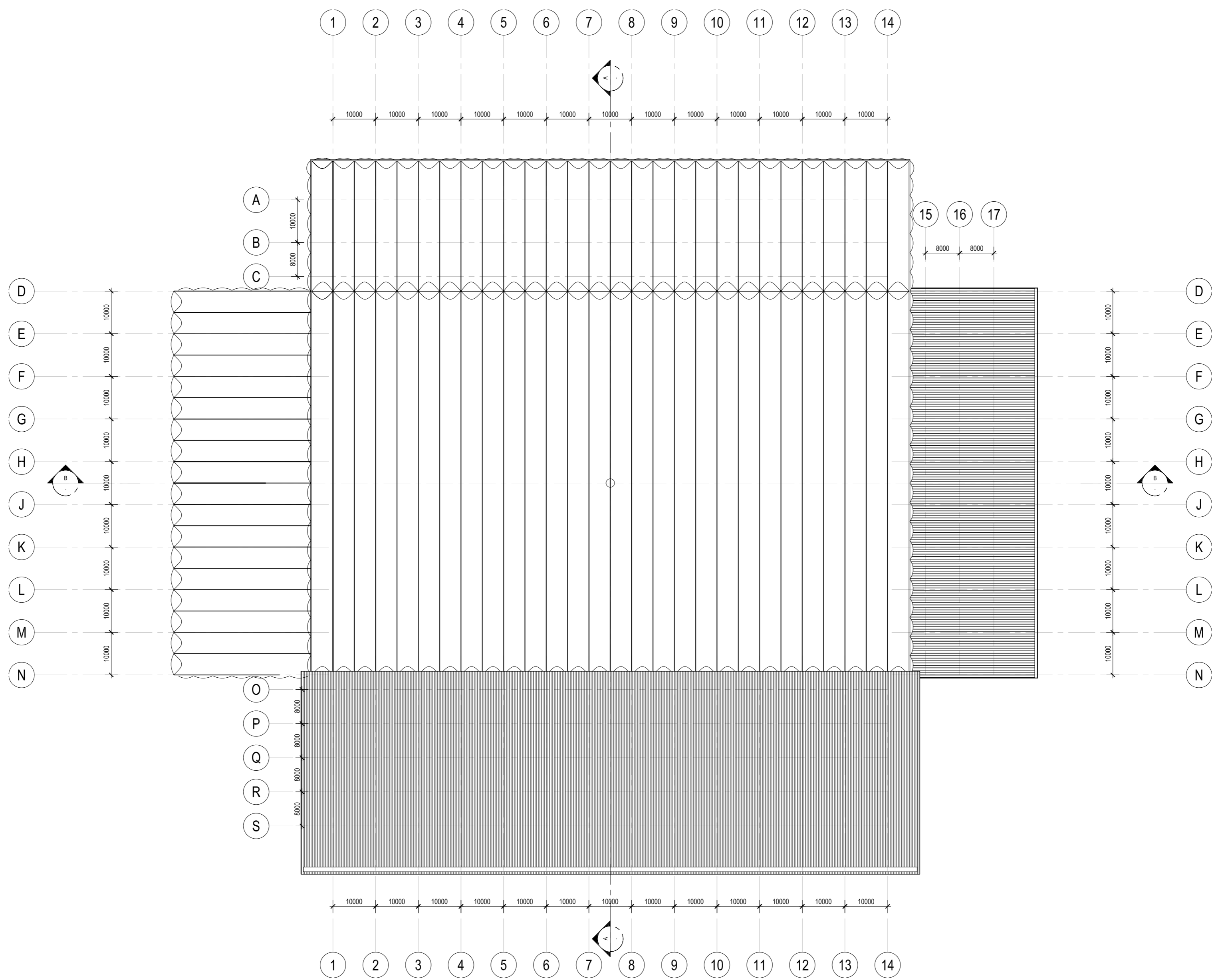
NOTES:

REVISIONS
01 14.09.2007 Issue for Costing
02 25.09.2007 Issue for Costing and Concept Design Report
03 28.09.2007 Issue for Concept Design Report
04 05.10.2007 Issue for RFL Consultants
05 07.11.2007 Issue for Concept Design Report
06 21.11.2007 Issue for Concept Design Report

For Jasmax Limited
DESIGN Designer
DRAWN Author
CHECKED Checker
APPROVED Approver
ARCHITECTURAL

PROJECT NUMBER: 206000
DUNEDIN MULTI-PURPOSE STADIUM
AWATEA STREET, DUNEDIN
SHEET
Level 05
Floor Plan
SCALE @ A1=1:500

MILESTONE ISSUES
FIRST ISSUED -1
RESOURCE CONSENT -1
BUILDING CONSENT -1
SCHEDULING -1
TENDER -1
REVISION & DATE
COPYRIGHT © Jasmax Limited
DO NOT SCALE OFF THIS DRAWING
CONTRACTOR MUST VERIFY ALL DIMENSIONS ON SITE BEFORE COMMENCING ANY WORK.
DRAWING NO: ASK-105
REVISION: 06



HOK
sport architecture

ABN 55 072 891 993
Brisbane
415 Adelaide Street,
GPO Box 5290
Brisbane QLD
AUSTRALIA
t: +61 (0)7 3839 9155
f: +61 (0)7 3839 9188

www.hok.com
enb@sport.au@hok.com.au

Jasmax Ltd
65 Upper Queen Street
PO Box 6648
Auckland
New Zealand
t: +64 9 366 9526
78 Victoria Street
Level 4, Dominion Building
PO Box 11442
Wellington
New Zealand
t: +64 4 499 3011
www.jasmax.com



ARCHITECTS
INTERIOR DESIGNERS
LANDSCAPE ARCHITECTS

Consultant Team

ARCHITECTS: JASMAX LTD / HOK
STRUCTURAL ENGINEER: SKM
MECHANICAL ENGINEER: -
ESD CONSULTANT: BECA
TRAFFIC ENGINEER: -
SURVEYOR: -
URBAN DESIGNER: -
FIRE ENGINEER: -
PROJECT MANAGER: ARROW

NOTES:

REVISIONS
01 14.09.2007 Issue for Costing
02 25.09.2007 Issue for Costing and Concept Design Report
03 28.09.2007 Issue for Concept Design Report
04 04.10.2007 Issue for MEL Consultants
05 07.11.2007 Issue for Concept Design Report

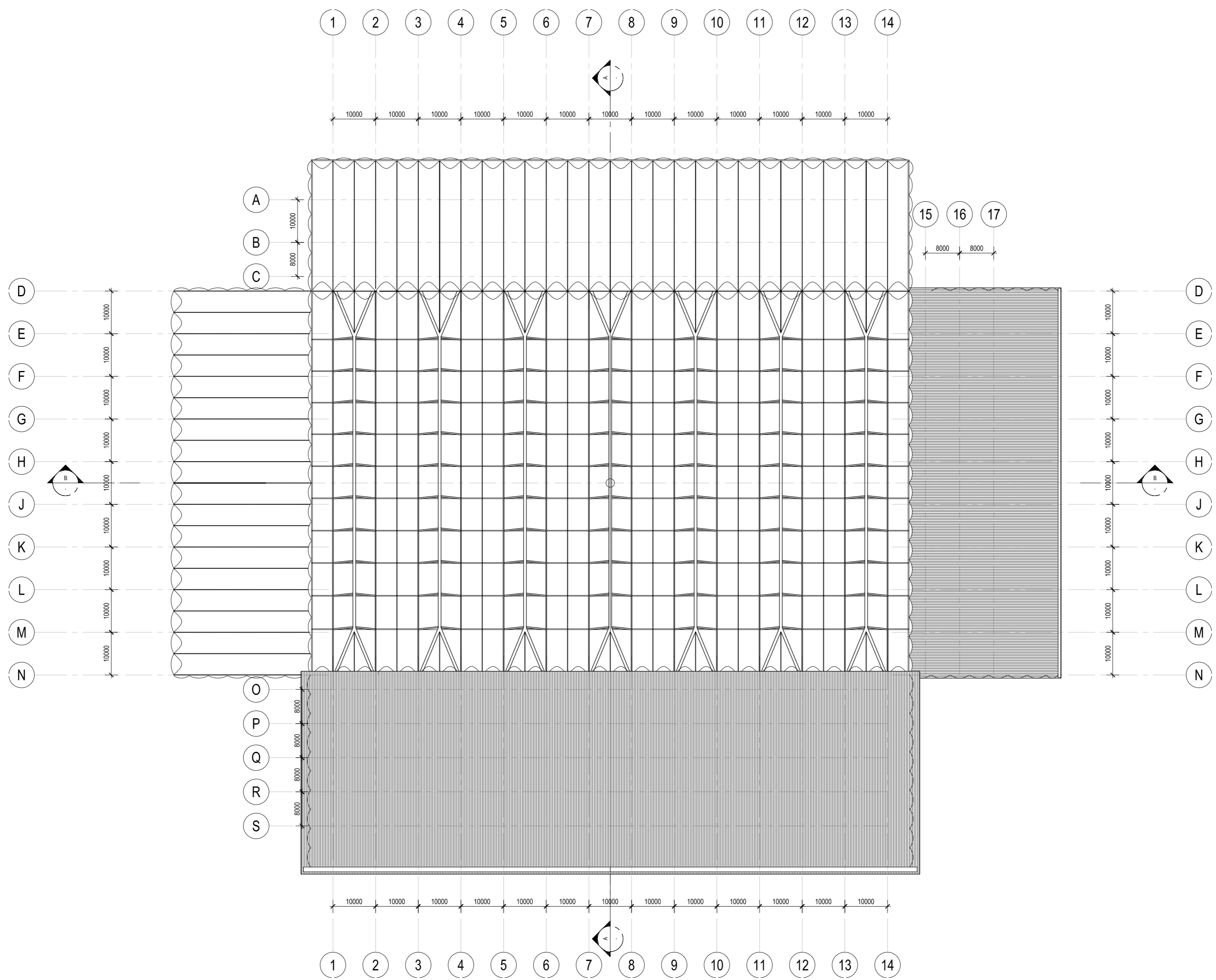
For Jasmax Limited
DESIGN Designer
DRAWN Author
CHECKED Checker
APPROVED Approver
ARCHITECTURAL

PROJECT NUMBER: 206000
DUNEDIN MULTI-PURPOSE STADIUM
AWATEA STREET, DUNEDIN

SHEET
Roof Plan

SCALE @ A1=1:500

MILESTONE ISSUES REVISION & DATE
FIRST ISSUED -1
RESOURCE CONSENT -1
BUILDING CONSENT -1
SCHEDULING -1
TENDER -1
COPYRIGHT © Jasmax Limited
DO NOT SCALE OFF THIS DRAWING
CONTRACTOR MUST VERIFY ALL DIMENSIONS ON
SITE BEFORE COMMENCING ANY WORK.
DRAWING NO. REVISION
ASK-106 05



HOK
sport architecture

ABN 55 072 891 993
Brisbane
415 Adelaide Street,
GPO Box 5290
Brisbane QLD
AUSTRALIA
t: +61 (0)7 3839 9155
f: +61 (0)7 3839 9188

www.hok.com
enb@sport.au@hok.com.au

Jasmax Ltd
65 Upper Queen Street
PO Box 6648
Auckland
New Zealand
t: +64 9 366 9526
78 Victoria Street
Level 4, Dominion Building
PO Box 11442
Wellington
New Zealand
t: +64 4 499 3011
www.jasmax.com



ARCHITECTS
INTERIOR DESIGNERS
LANDSCAPE ARCHITECTS

Consultant Team
ARCHITECTS: JASMAX LTD / HOK
STRUCTURAL ENGINEER: SKM
MECHANICAL ENGINEER: -
ESD CONSULTANT: BECA
TRAFFIC ENGINEER: -
SURVEYOR: -
URBAN DESIGNER: -
FIRE ENGINEER: -
PROJECT MANAGER: ARROW

NOTES:

REVISIONS
01 28.09.2007 Issue for Concept Design Report
02 04.10.2007 Issue for MEL Consultants
03 07.11.2007 Issue for Concept Design Report

For Jasmax Limited
DESIGN Designer
DRAWN Author
CHECKED Checker
APPROVED Approver

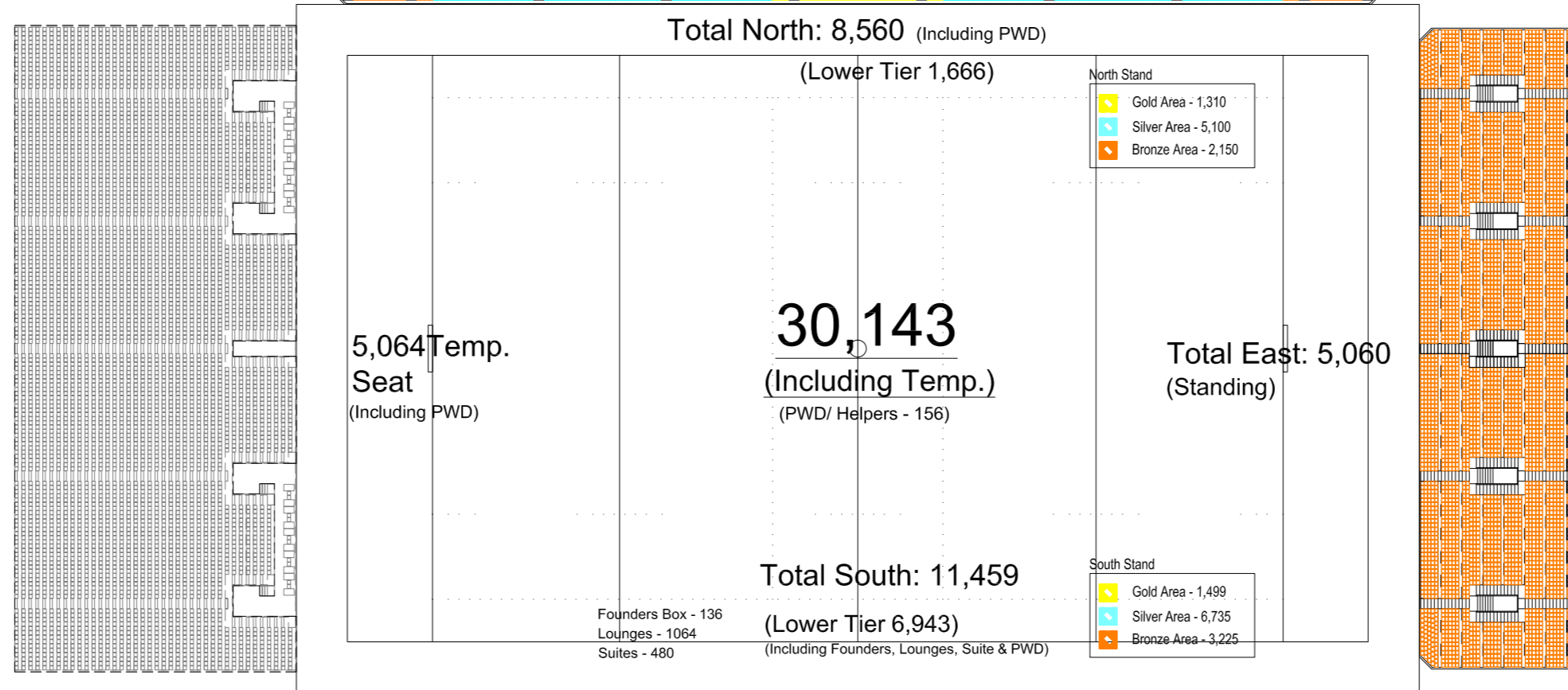
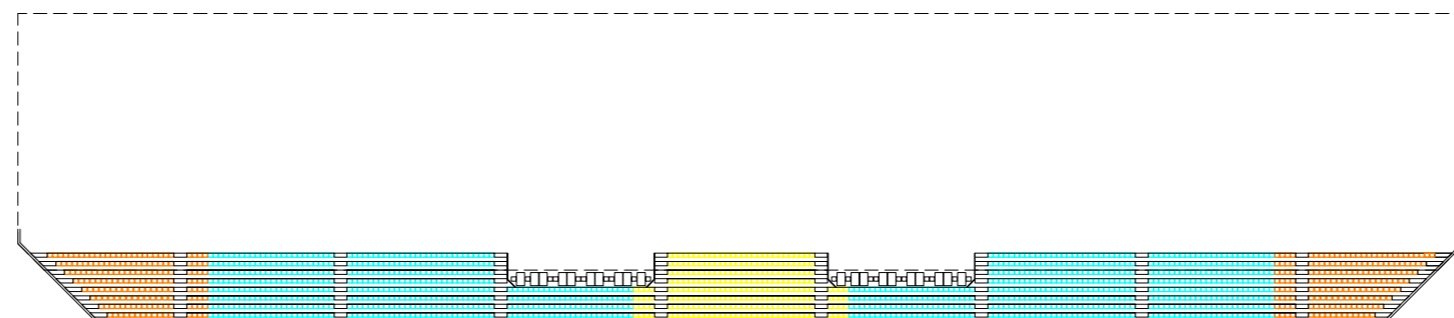
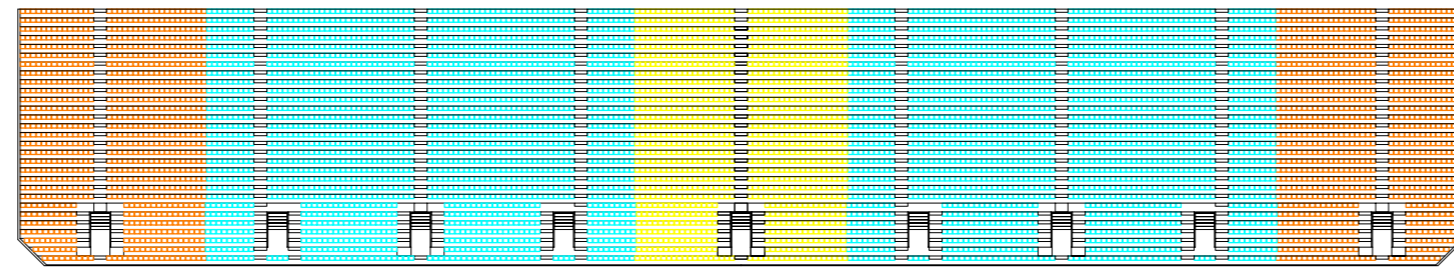
ARCHITECTURAL

PROJECT NUMBER: 206000
DUNEDIN MULTI-PURPOSE STADIUM
AWATEA STREET, DUNEDIN

SHEET
Tied-Arch Truss Option
Roof Plan
SCALE @ A1=1:500

MILESTONE ISSUES REVISION & DATE
FIRST ISSUED -1-
RESOURCE CONSENT -1-
BUILDING CONSENT -1-
SCHEDULING -1-
TENDER -1-
COPYRIGHT © Jasmax Limited
DO NOT SCALE OFF THIS DRAWING
CONTRACTOR MUST VERIFY ALL DIMENSIONS ON
SITE BEFORE COMMENCING ANY WORK.
DRAWING NO. REVISION
ASK-107 03

Upper Tiers
6,894



Upper Tiers
4,516
(including PWD)

Total:

	Gold Area - 2,809
	Silver Area - 11,835
	Bronze Area - 15,499



ABN 55 072 891 993
BRISBANE
415 Adelaide Street,
GPO Box 5290
Brisbane QLD
AUSTRALIA
t: +61(0)7 3839 9155
f: +61(0)7 3839 9188

Jasmax Ltd
65 Upper Queen Street
PO Box 6648
Auckland
New Zealand
t: +64 9 366 9526
78 Victoria Street
Level 4, Dominion Building
PO Box 11442
Wellington
New Zealand
t: +64 4 499 3011
www.jasmax.com



ARCHITECTS
INTERIOR DESIGNERS
LANDSCAPE ARCHITECTS

Consultant Team
ARCHITECTS: JASMAX LTD / HOK
STRUCTURAL ENGINEER: SKM
MECHANICAL ENGINEER: -
ESD CONSULTANT: BECA
TRAFFIC ENGINEER: -
SURVEYOR: -
URBAN DESIGNER: -
FIRE ENGINEER: -
PROJECT MANAGER: ARROW

NOTES:

REVISIONS

01	25.09.2007	Issue for Costing and Concept Design Report
02	28.09.2007	Issue for Concept Design Report
03	07.11.2007	Issue for Concept Design Report
04	21.11.2007	Issue for Concept Design Report

For Jasmax Limited

DESIGN	Designer
DRAWN	Author
CHECKED	Checker
APPROVED	Approver

ARCHITECTURAL

PROJECT NUMBER: 206000
DUNEDIN MULTI-PURPOSE STADIUM
AWATEA STREET, DUNEDIN
SHEET
Seating Bowl Plan -
Lower & Upper Tier
SCALE @ A1=1:500

MILESTONE ISSUES

REVISION & DATE	
FIRST ISSUED	<1
RESOURCE CONSENT	<1
BUILDING CONSENT	<1
SCHEDULING	<1
TENDER	<1

COPYRIGHT © Jasmax Limited
DO NOT SCALE OFF THIS DRAWING
CONTRACTOR MUST VERIFY ALL DIMENSIONS ON SITE BEFORE COMMENCING ANY WORK.

DRAWING NO: ASK-111 REVISION: 04