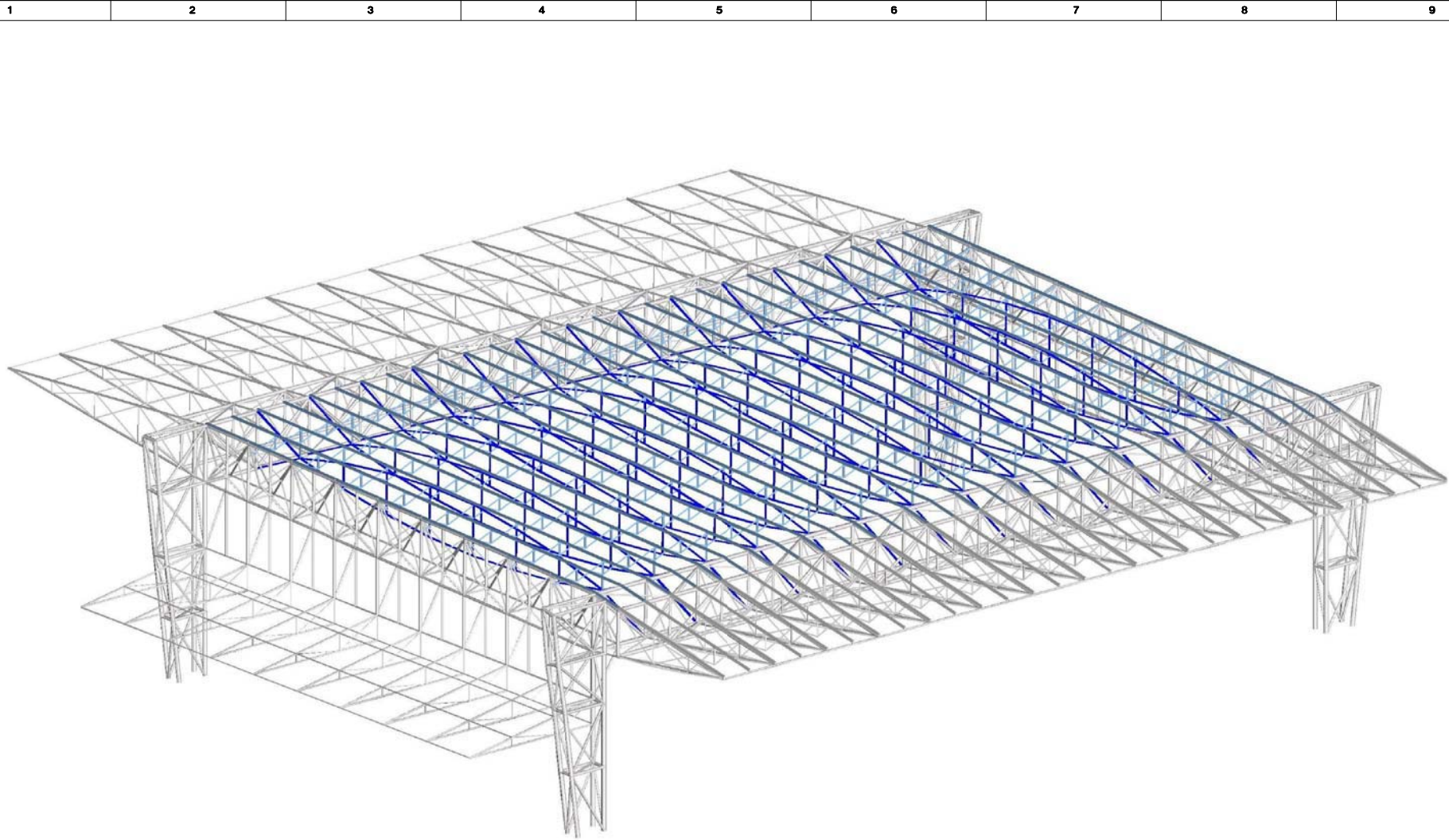


4.0 Development of the Awatea Street Site -Structural Drawings

S001	Roof Option 1
S002	Roof Option 1 Without Centre Truss
S003	Roof Option 1 Long Section
S004	Roof Option 2
S005	Roof Option 2 Without Centre Truss
S006	Roof Option 2 Centre
S007	Typical Stand Section
S008	Typical RC Beam



Option 1 Isometric with centre roof

FILENAME: PLOT DATE: (NOT PLOTTED)

No	DATE	DRAFTING CHECK	DESIGN REVIEW	REV'D P.MGR	APP'D P.DIR	AMENDMENT

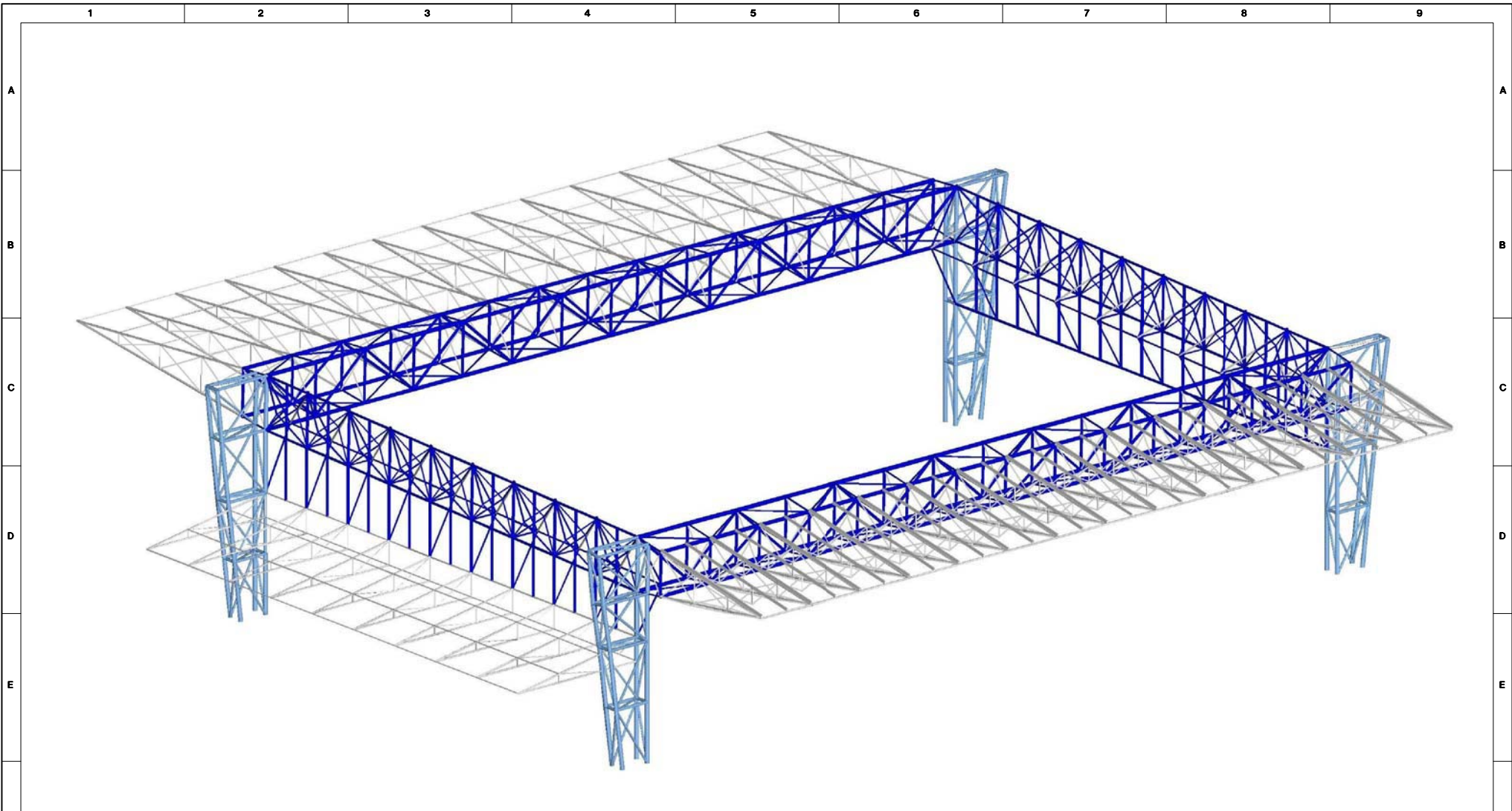
COPYRIGHT
 The concepts and information contained in this document are the copyright of Sinclair Knight Merz Ltd. Use or copying of the document in whole or in part without the written permission of Sinclair Knight Merz Ltd constitutes an infringement of copyright.

SKM
 Level 12, Mayfair House
 54 The Terrace
 PO Box 10-283, Wellington
 NEW ZEALAND
 Tel +64 4 473 4265
 Fax +64 4 473 3369

CLIENT ARROW INTERNATIONAL			
PROJECT DUNEDIN MULTI-PURPOSE STADIUM			
DRAWN SL	DATE 27/9/07	APPROVED PROJ MANAGER	APPROVED PROJ DIRECTOR
DESIGNED SL	DESIGN REVIEW DKB		

TITLE CONCEPT DESIGN REPORT STRUCTURES ROOF OPTION 1			
SCALE NTS	SKM PROJECT No ZB00209	DRAWING No CONCEPT-S001	AMDT 0

FILENAME: PLOT DATE: (NOT PLOTTED)



Option 1 Isometric without centre roof

No	DATE	DRAFTING CHECK	DESIGN REVIEW	REV'D P.MGR	APP'D P.DIR	AMENDMENT

COPYRIGHT
 The concepts and information contained in this document are the copyright of Sinclair Knight Merz Ltd. Use or copying of the document in whole or in part without the written permission of Sinclair Knight Merz Ltd constitutes an infringement of copyright.

SKM
 Level 12, Mayfair House
 54 The Terrace
 PO Box 10-283, Wellington
 NEW ZEALAND
 Tel +64 4 473 4265
 Fax +64 4 473 3369

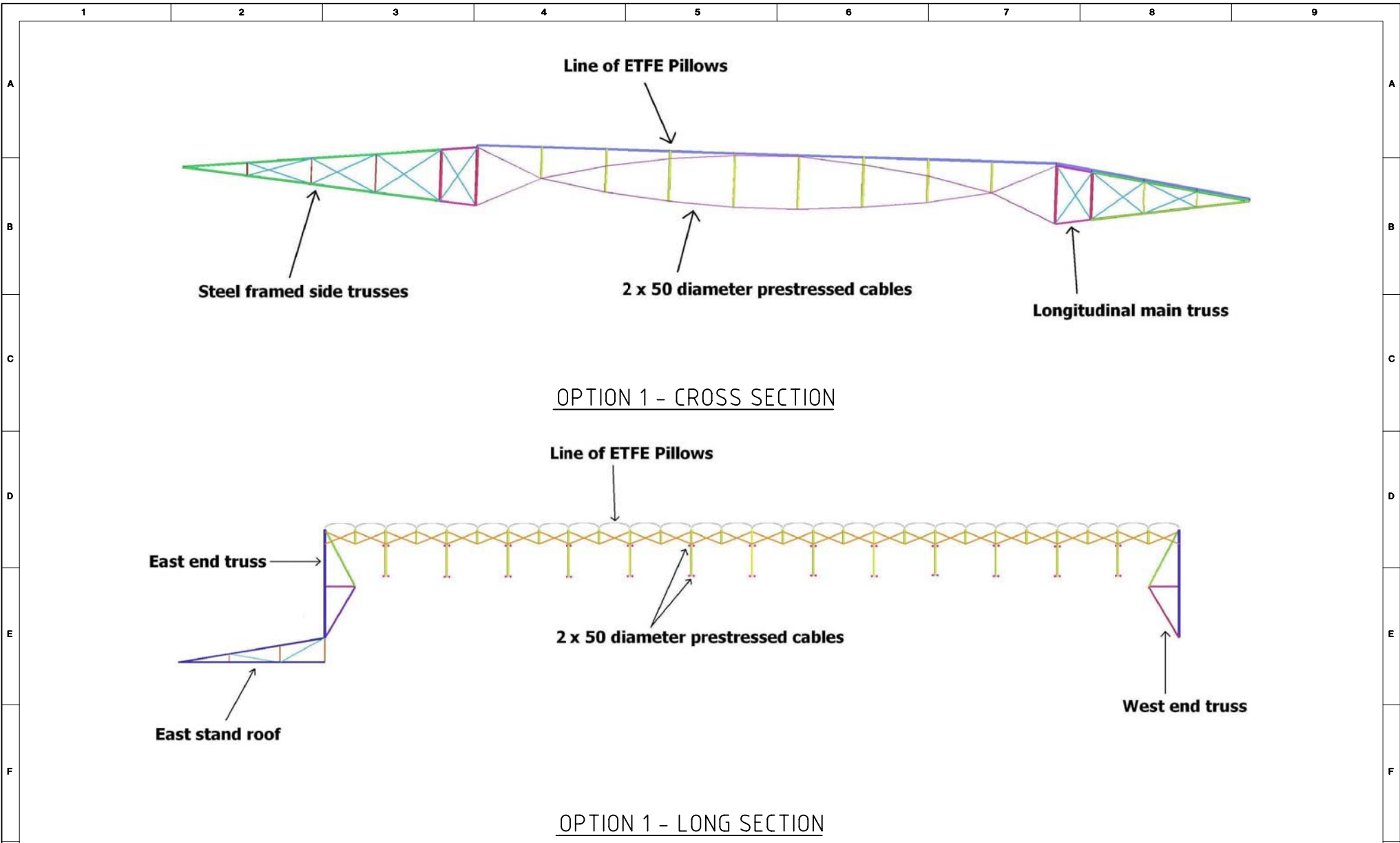
CLIENT ARROW INTERNATIONAL			
PROJECT DUNEDIN MULTI-PURPOSE STADIUM			
DRAWN SL	DATE 27/9/07	APPROVED PROJ MANAGER	APPROVED PROJ DIRECTOR
DESIGNED SL	DESIGN REVIEW DKB		

TITLE CONCEPT DESIGN REPORT STRUCTURES ROOF OPTION 1			
SCALE NTS	SKM PROJECT No ZB00209	DRAWING No CONCEPT-S002	AMDT 0

FILENAME:

A4

FILENAME: PLOT DATE: (NOT PLOTTED)



No	DATE	DRAFTING CHECK	DESIGN REVIEW	REV'D P.MGR	APP'D P.DIR	AMENDMENT

COPYRIGHT

The concepts and information contained in this document are the copyright of Sinclair Knight Merz Ltd. Use or copying of the document in whole or in part without the written permission of Sinclair Knight Merz Ltd constitutes an infringement of copyright.

SKM

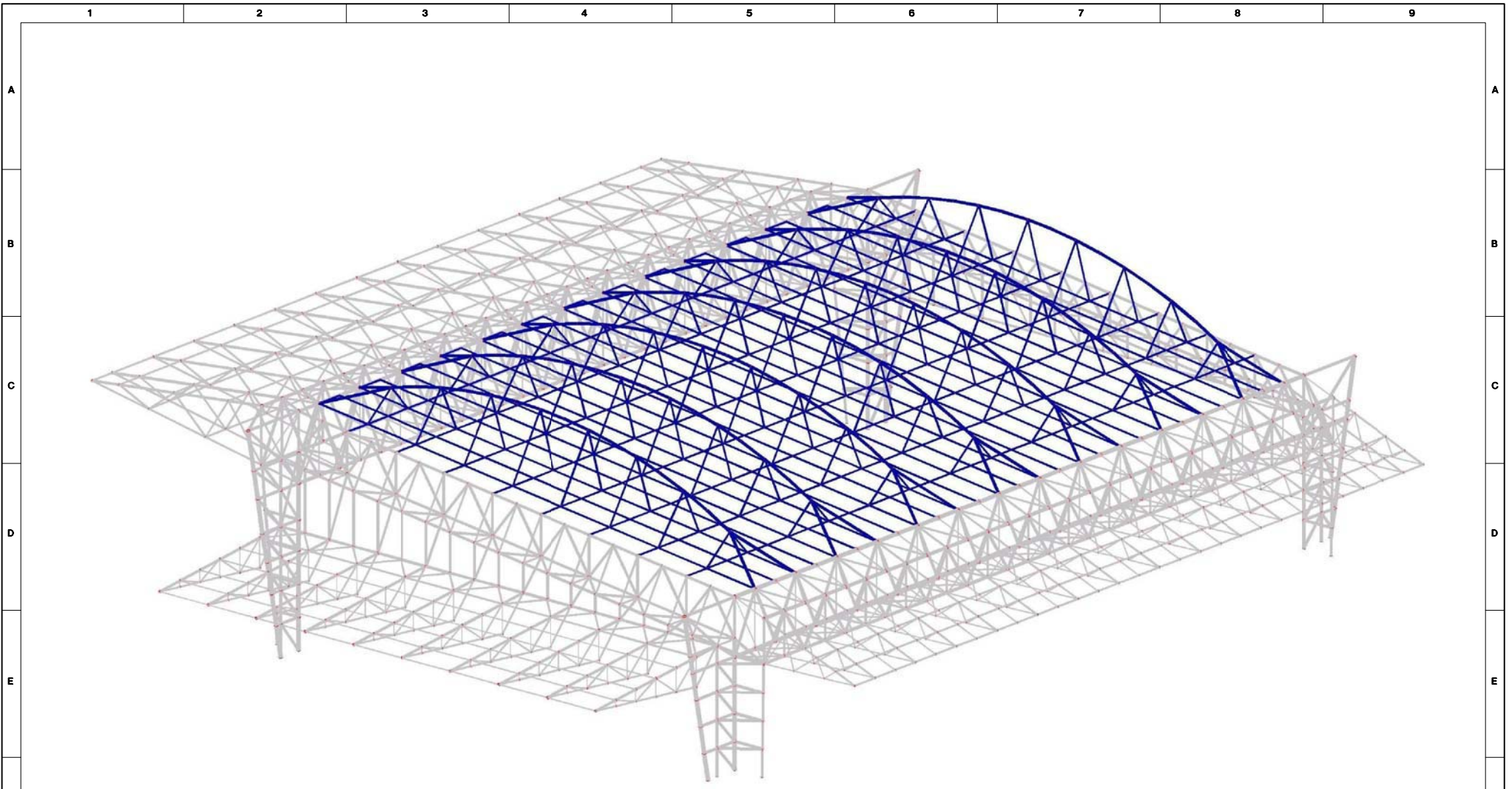
Level 12, Mayfair House
54 The Terrace
PO Box 10-283, Wellington
NEW ZEALAND
Tel +64 4 473 4265
Fax +64 4 473 3369

CLIENT ARROW INTERNATIONAL			
PROJECT DUNEDIN MULTI-PURPOSE STADIUM			
DRAWN SL	DATE 27/9/07	APPROVED PROJ MANAGER	APPROVED PROJ DIRECTOR
DESIGNED SL	DESIGN REVIEW DKB		

TITLE CONCEPT DESIGN REPORT STRUCTURES ROOF OPTION 1			
SCALE NTS	SKM PROJECT No ZB00209	DRAWING No CONCEPT-S003	AMDT 0

1 2 3 4 5 6 7 8 9 A4

FILENAME: PLOT DATE: (NOT PLOTTED)



Option 2 Isometric with centre roof

No	DATE	DRAFTING CHECK	DESIGN REVIEW	REV'D P.MGR	APP'D P.DIR	AMENDMENT

COPYRIGHT
 The concepts and information contained in this document are the copyright of Sinclair Knight Merz Ltd. Use or copying of the document in whole or in part without the written permission of Sinclair Knight Merz Ltd constitutes an infringement of copyright.

SKM
 Level 12, Mayfair House
 54 The Terrace
 PO Box 10-283, Wellington
 NEW ZEALAND
 Tel +64 4 473 4265
 Fax +64 4 473 3369

CLIENT ARROW INTERNATIONAL			
PROJECT DUNEDIN MULTI-PURPOSE STADIUM			
DRAWN SL	DATE 27/9/07	APPROVED PROJ MANAGER	APPROVED PROJ DIRECTOR
DESIGNED SL	DESIGN REVIEW DKB		

TITLE CONCEPT DESIGN REPORT STRUCTURES ROOF OPTION 2			
SCALE NTS	SKM PROJECT No ZB00209	DRAWING No CONCEPT-S004	AMDT 0

1 2 3 4 5 6 7 8 9

A A

B B

C C

D D

E E

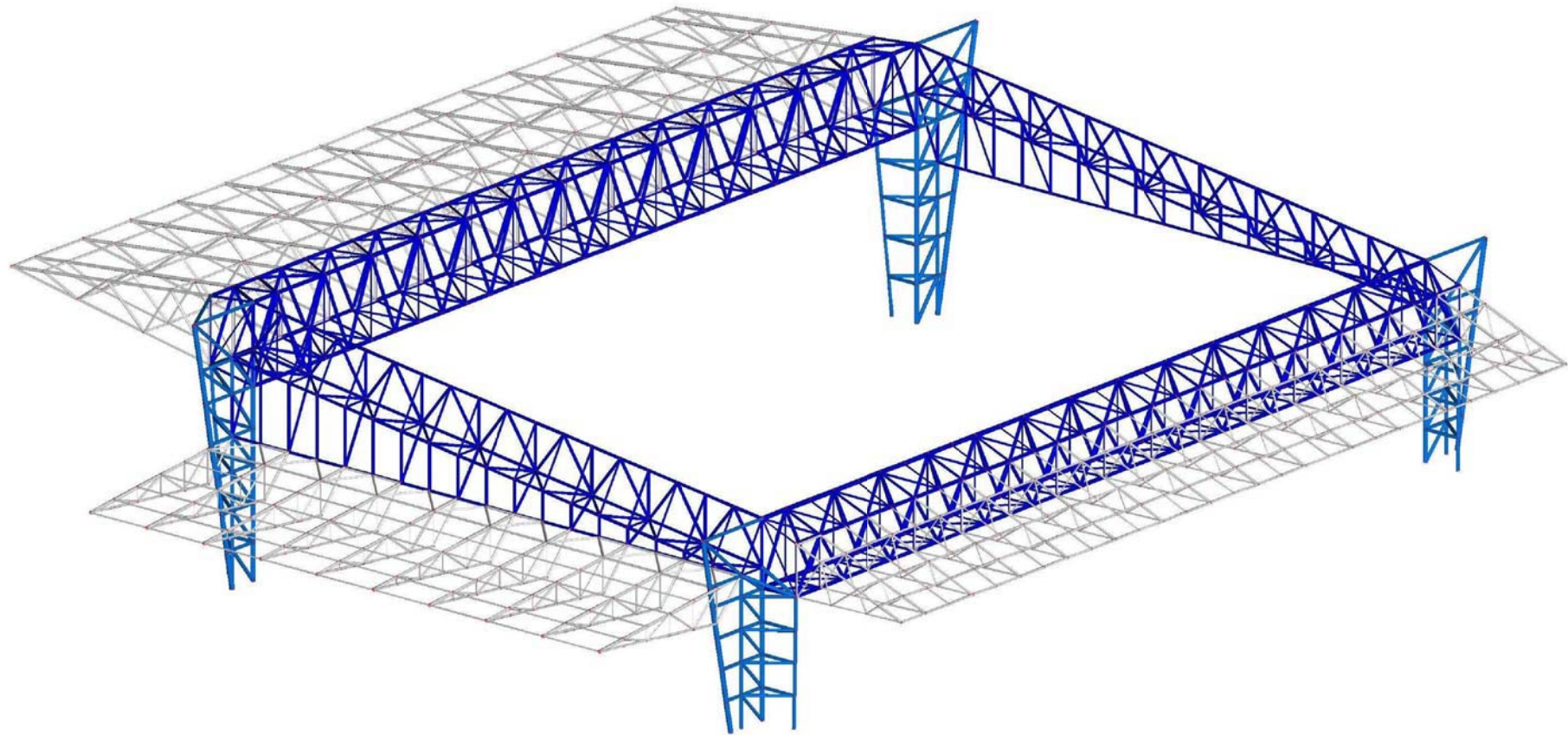
F F

G G

1 2 3 4 5 6 7 8 9

A4

FILENAME: PLOT DATE: (NOT PLOTTED)



Option 2 Isometric without centre roof

No	DATE	DRAFTING CHECK	DESIGN REVIEW	REV'D P.MGR	APP'D P.DIR	AMENDMENT

COPYRIGHT
 The concepts and information contained in this document are the copyright of Sinclair Knight Merz Ltd. Use or copying of the document in whole or in part without the written permission of Sinclair Knight Merz Ltd constitutes an infringement of copyright.

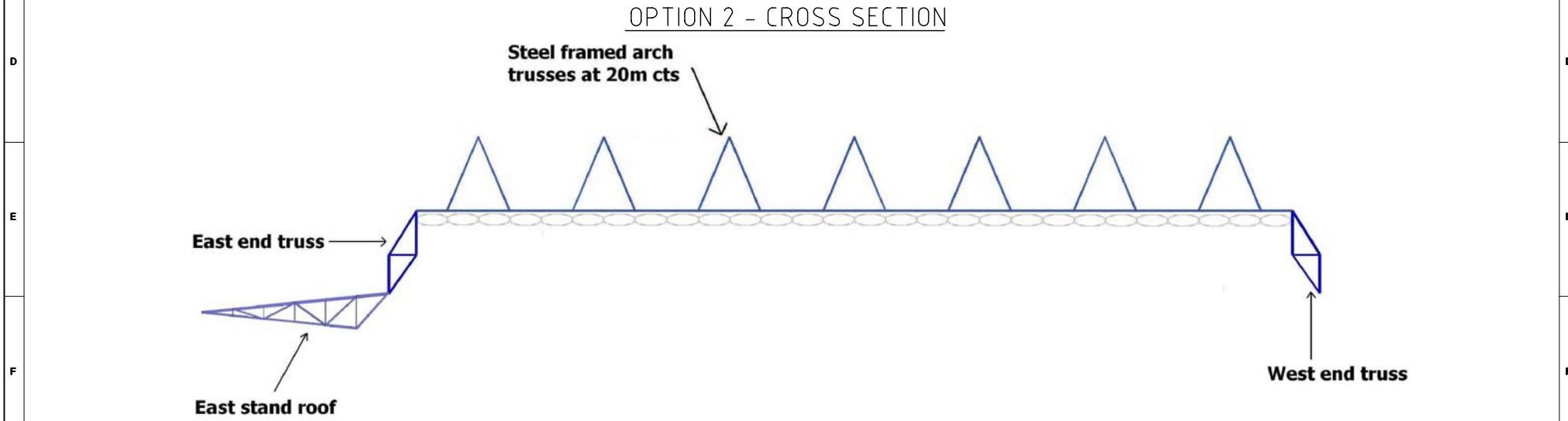
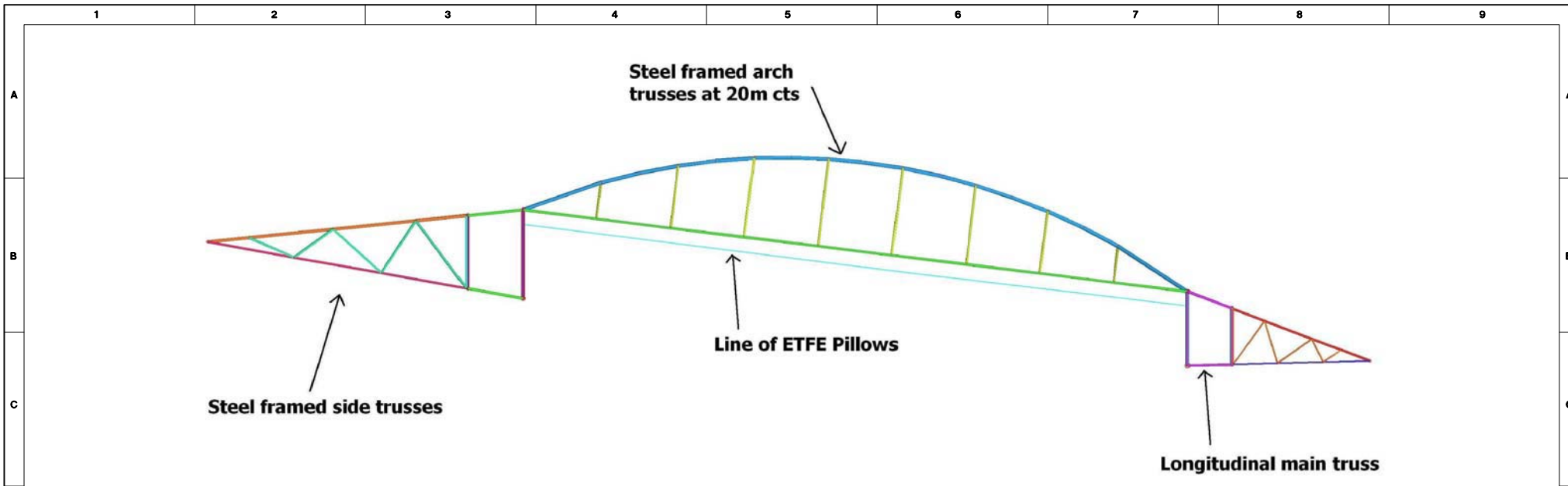
SKM
 Level 12, Mayfair House
 54 The Terrace
 PO Box 10-283, Wellington
 NEW ZEALAND
 Tel +64 4 473 4265
 Fax +64 4 473 3369

CLIENT ARROW INTERNATIONAL			
PROJECT DUNEDIN MULTI-PURPOSE STADIUM			
DRAWN SL	DATE 27/9/07	APPROVED PROJ MANAGER	APPROVED PROJ DIRECTOR
DESIGNED SL	DESIGN REVIEW DKB		

TITLE CONCEPT DESIGN REPORT STRUCTURES ROOF OPTION 2			
SCALE NTS	SKM PROJECT No ZB00209	DRAWING No CONCEPT-S005	AMDT 0

PLOT DATE: (NOT PLOTTED)

FILENAME:



No	DATE	DRAFTING CHECK	DESIGN REVIEW	REV'D P.MGR	APP'D P.DIR	AMENDMENT

COPYRIGHT

The concepts and information contained in this document are the copyright of Sinclair Knight Merz Ltd. Use or copying of the document in whole or in part without the written permission of Sinclair Knight Merz Ltd constitutes an infringement of copyright.

SKM

Level 12, Mayfair House
54 The Terrace
PO Box 10-283, Wellington
NEW ZEALAND
Tel +64 4 473 4265
Fax +64 4 473 3369

CLIENT ARROW INTERNATIONAL			
PROJECT DUNEDIN MULTI-PURPOSE STADIUM			
DRAWN SL	DATE 27/9/07	APPROVED PROJ MANAGER	APPROVED PROJ DIRECTOR
DESIGNED SL	DESIGN REVIEW DKB		

TITLE CONCEPT DESIGN REPORT STRUCTURES ROOF OPTION 2			
SCALE NTS	SKM PROJECT No ZB00209	DRAWING No CONCEPT-S006	AMDT 0

1 2 3 4 5 6 7 8 9

A

B

C

D

E

F

G

A

B

C

D

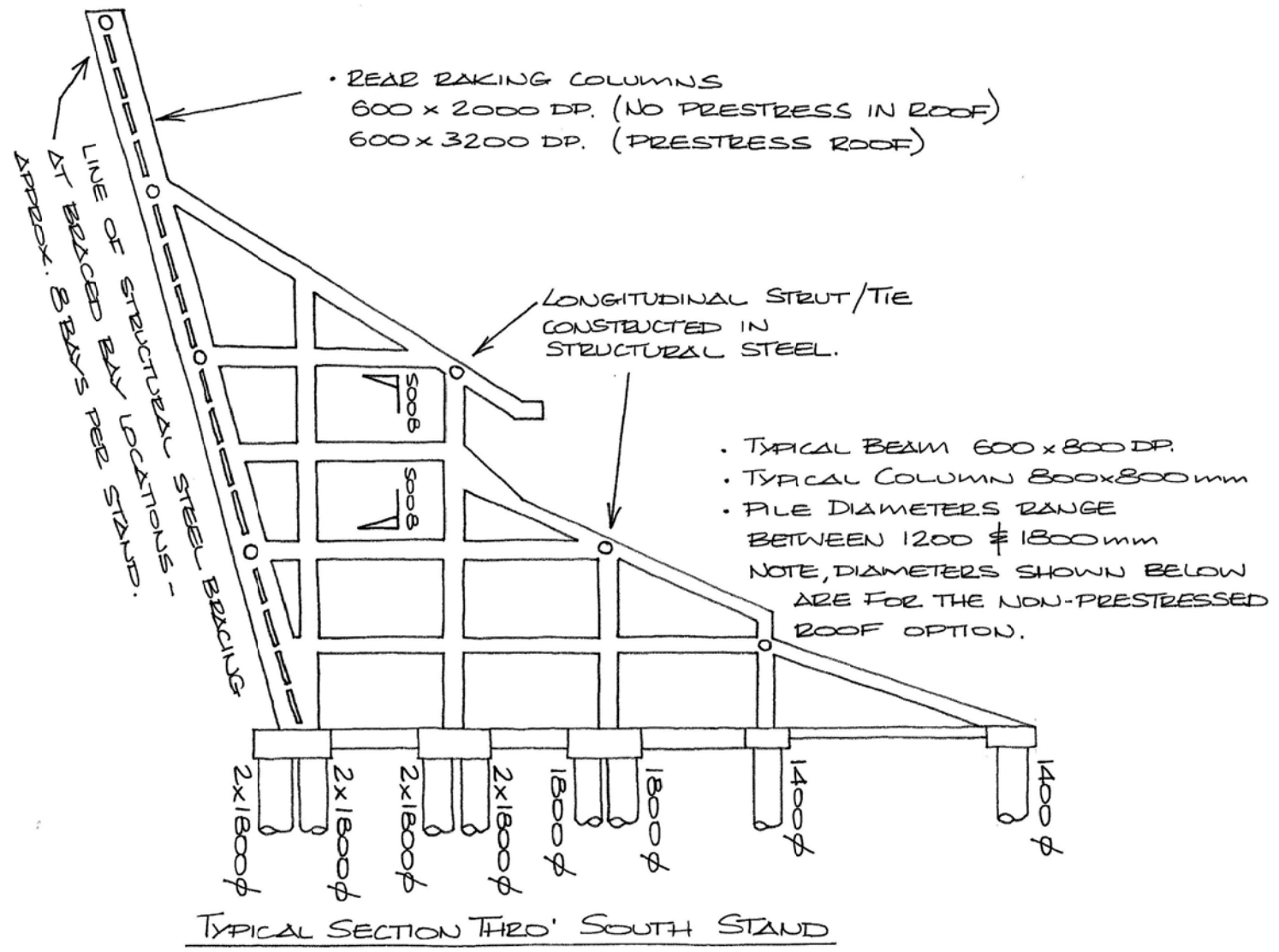
E

F

G

A4

FILENAME: PLOT DATE: (NOT PLOTTED)



TYPICAL SECTION THRO' SOUTH STAND

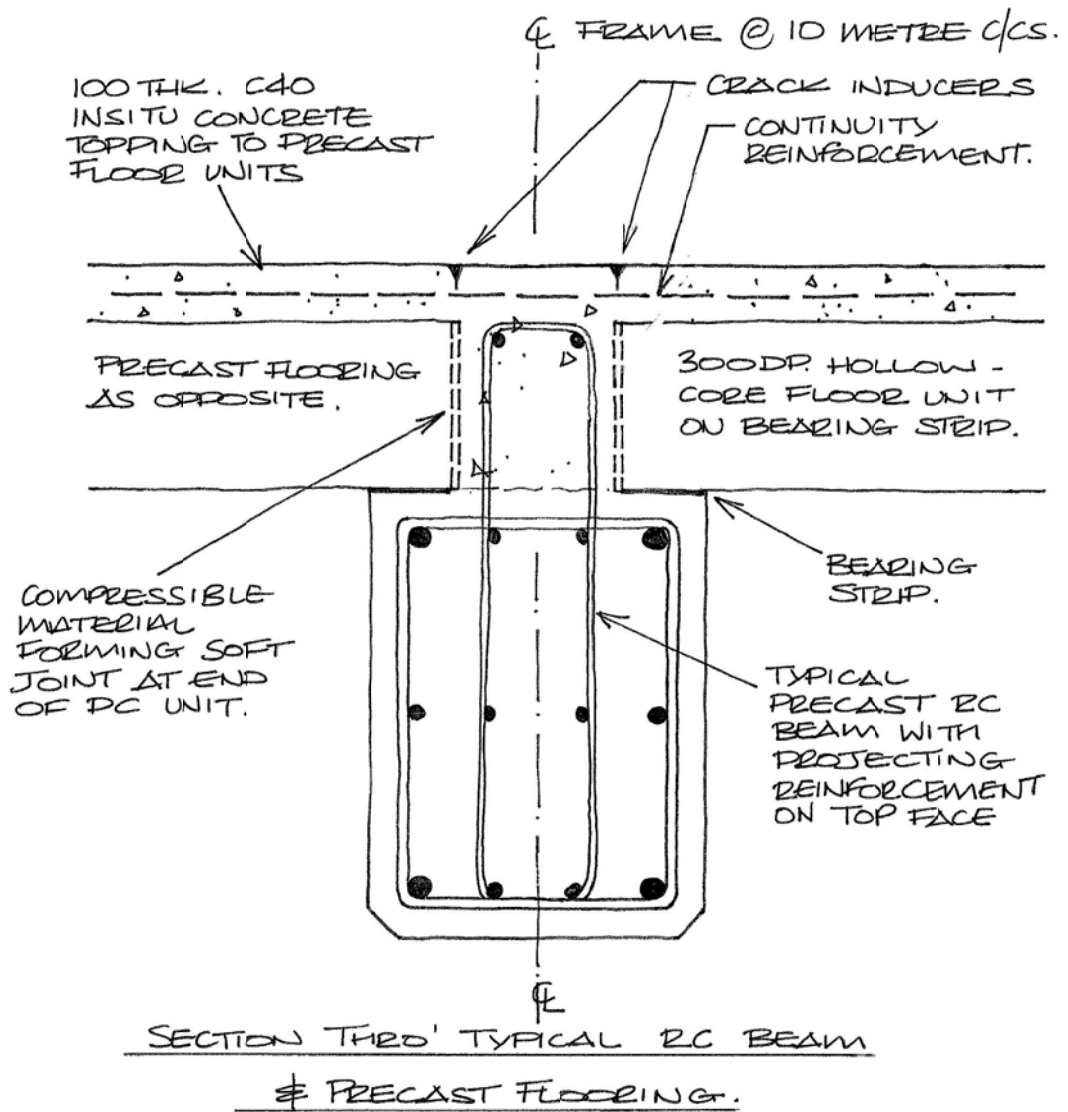
No	DATE	DRAFTING CHECK	DESIGN REVIEW	REV'D P.MGR	APP'D P.DIR	AMENDMENT

COPYRIGHT
 The concepts and information contained in this document are the copyright of Sinclair Knight Merz Ltd. Use or copying of the document in whole or in part without the written permission of Sinclair Knight Merz Ltd constitutes an infringement of copyright.

SKM
 Level 12, Mayfair House
 54 The Terrace
 PO Box 10-283, Wellington
 NEW ZEALAND
 Tel +64 4 473 4265
 Fax +64 4 473 3369

CLIENT ARROW INTERNATIONAL			
PROJECT DUNEDIN MULTI-PURPOSE STADIUM			
DRAWN SL	DATE 27/9/07	APPROVED PROJ MANAGER	APPROVED PROJ DIRECTOR
DESIGNED SL	DESIGN REVIEW DKB		

TITLE CONCEPT DESIGN REPORT STRUCTURES STAND DETAILS			
SCALE NTS	SKM PROJECT No ZB00209	DRAWING No CONCEPT-S007	AMDT 0



SECTION THRU TYPICAL RC BEAM
& PRECAST FLOORING.

FILENAME: PLOT DATE: (NOT PLOTTED)

No	DATE	DRAFTING CHECK	DESIGN REVIEW	REV'D P.MGR	APP'D P.DIR	AMENDMENT

COPYRIGHT
The concepts and information contained in this document are the copyright of Sinclair Knight Merz Ltd. Use or copying of the document in whole or in part without the written permission of Sinclair Knight Merz Ltd constitutes an infringement of copyright.

SKM
Level 12, Mayfair House
54 The Terrace
PO Box 10-283, Wellington
NEW ZEALAND
Tel +64 4 473 4265
Fax +64 4 473 3369

CLIENT ARROW INTERNATIONAL			
PROJECT DUNEDIN MULTI-PURPOSE STADIUM			
DRAWN SL	DATE 27/9/07	APPROVED PROJ MANAGER	APPROVED PROJ DIRECTOR
DESIGNED SL	DESIGN REVIEW DKB		

TITLE CONCEPT DESIGN REPORT STRUCTURES STAND DETAILS			
SCALE NTS	SKM PROJECT No ZB00209	DRAWING No CONCEPT-S008	AMDT 0