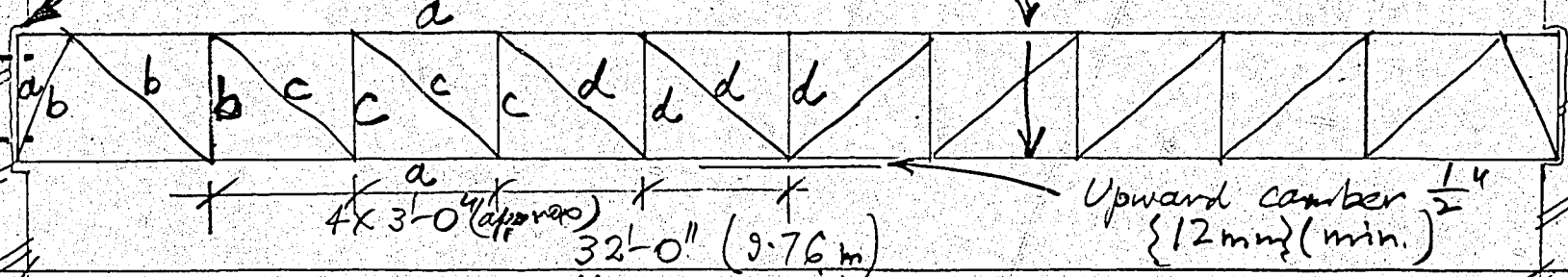




Symmetrical about  $\phi$

Build in min<sup>m</sup> 3" into stone walls each end - concrete in

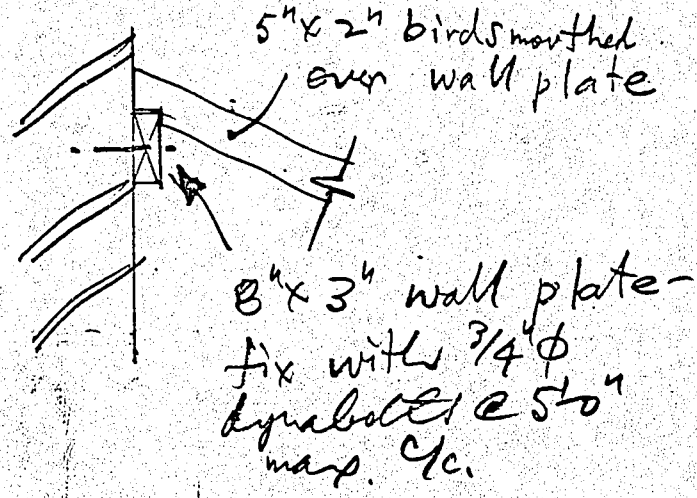
Drill top & bottom chords  $\frac{3}{16}$ "  $\phi$  @ 3'-0" c/c



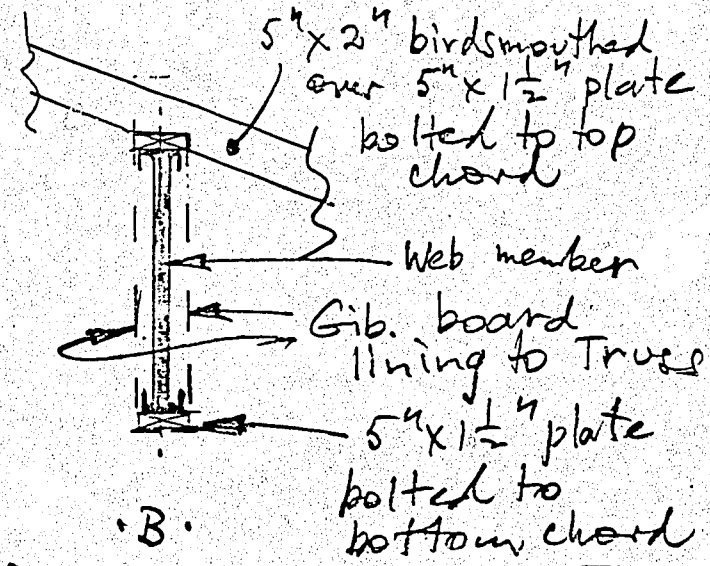
2 No.  $\frac{3}{4}$ "  $\phi$  dynabolts or  $\frac{3}{4}$ "  $\phi$  bolts right thru wall to  $2'-6" \times 4" \times \frac{5}{16}$ " PL on rear face

4 x 3'-0" (approx) 32'-0" (9.76m) Confirm on site

TRUSS 1 - No. OFF : 2



A. DETAIL AT REAR WALL



B. DETAIL AT TRUSS

LEGEND	
a	.102X51 RSC 10.4 or 76X76 RHS 9.14
b	50 NB 2.9 CHS
c	40 NB 2.9 CHS
d	25 NB 2.65 CHS

STRUCTURAL DETAILS, CONVERSION OF TRINITY CHURCH for FORTUNE THEATRE Co.

BRICKELL, MOSS, RANKINE & HILL, O.S.B. BUILDING, GEORGE ST., P.O. BOX 5243, DUNEDIN, PHONE 88-203

CITY PLANNING DEPARTMENT  
 Pursuant to the provisions of the District Scheme, these plans and specifications are approved, provided that no change shall be made to the details shown hereon, and contained in the specification attached hereto, and subject to  
*Approved by Committee 25/1/78*  
 25/1/78  
 Signed *R. O'Connell*  
 for City Planning Officer

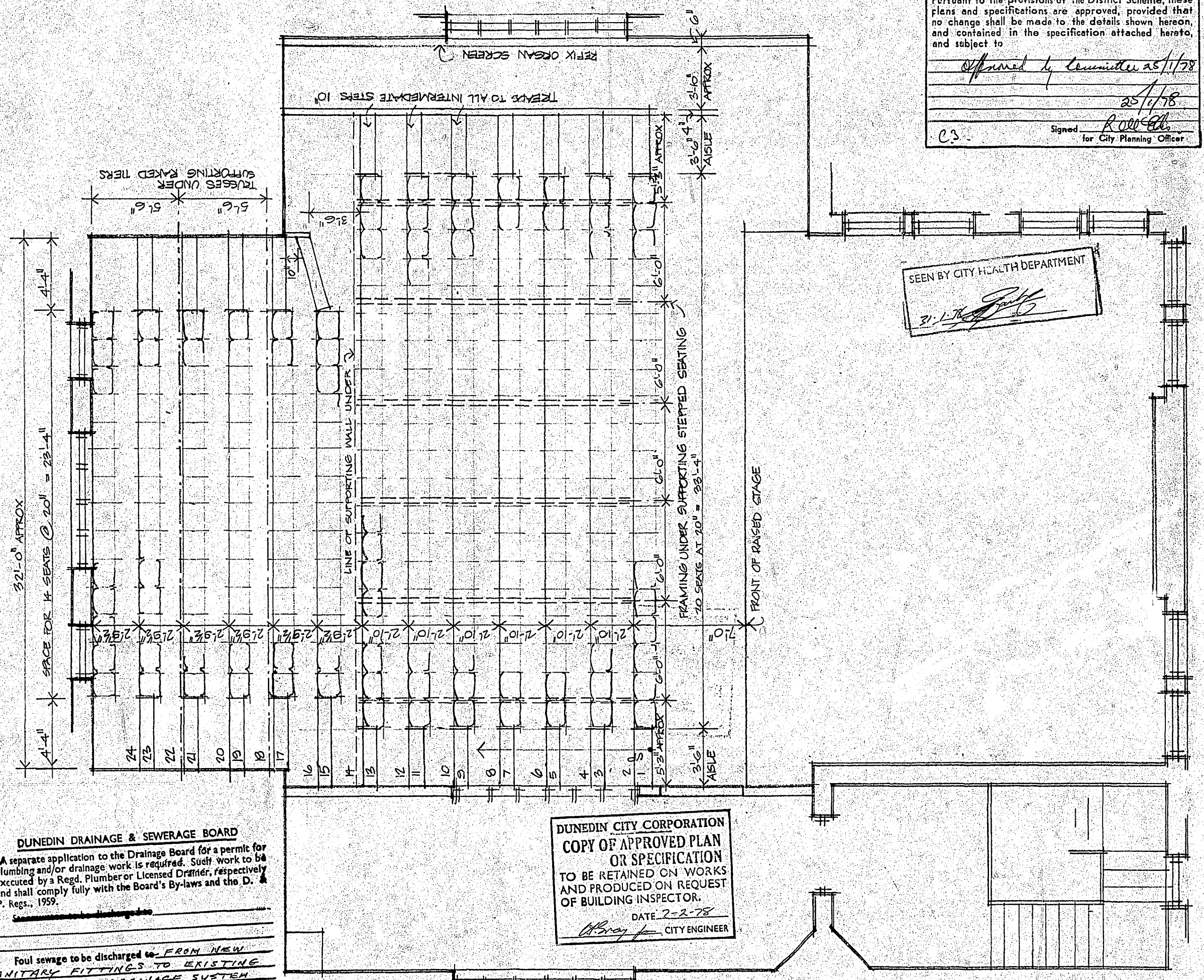
SEEN BY CITY HEALTH DEPARTMENT  
*31.1.78*

CONVERSION OF TRINITY  
 METHODIST CHURCH  
 FOR FORTUNE THEATRE

SCALE: 1/4" = 1'-0"

PLAN AT UPPER LEVEL

DRAWING  
 No 2 of 4  
 16.1.78



DUNEDIN CITY CORPORATION  
 COPY OF APPROVED PLAN  
 OR SPECIFICATION  
 TO BE RETAINED ON WORKS  
 AND PRODUCED ON REQUEST  
 OF BUILDING INSPECTOR.  
 DATE 2-2-78  
*A. Gray* CITY ENGINEER

DUNEDIN DRAINAGE & SEWERAGE BOARD  
 A separate application to the Drainage Board for a permit for plumbing and/or drainage work is required. Such work to be executed by a Regd. Plumber or Licensed Drafter, respectively and shall comply fully with the Board's By-laws and the D. & P. Regs., 1959.

Foul sewage to be discharged to FROM NEW SANITARY FITTINGS TO EXISTING PRIVATE FOUL DRAINAGE SYSTEM SERVING BUILDING  
*A. J. Clacuer*  
 1/2/78

