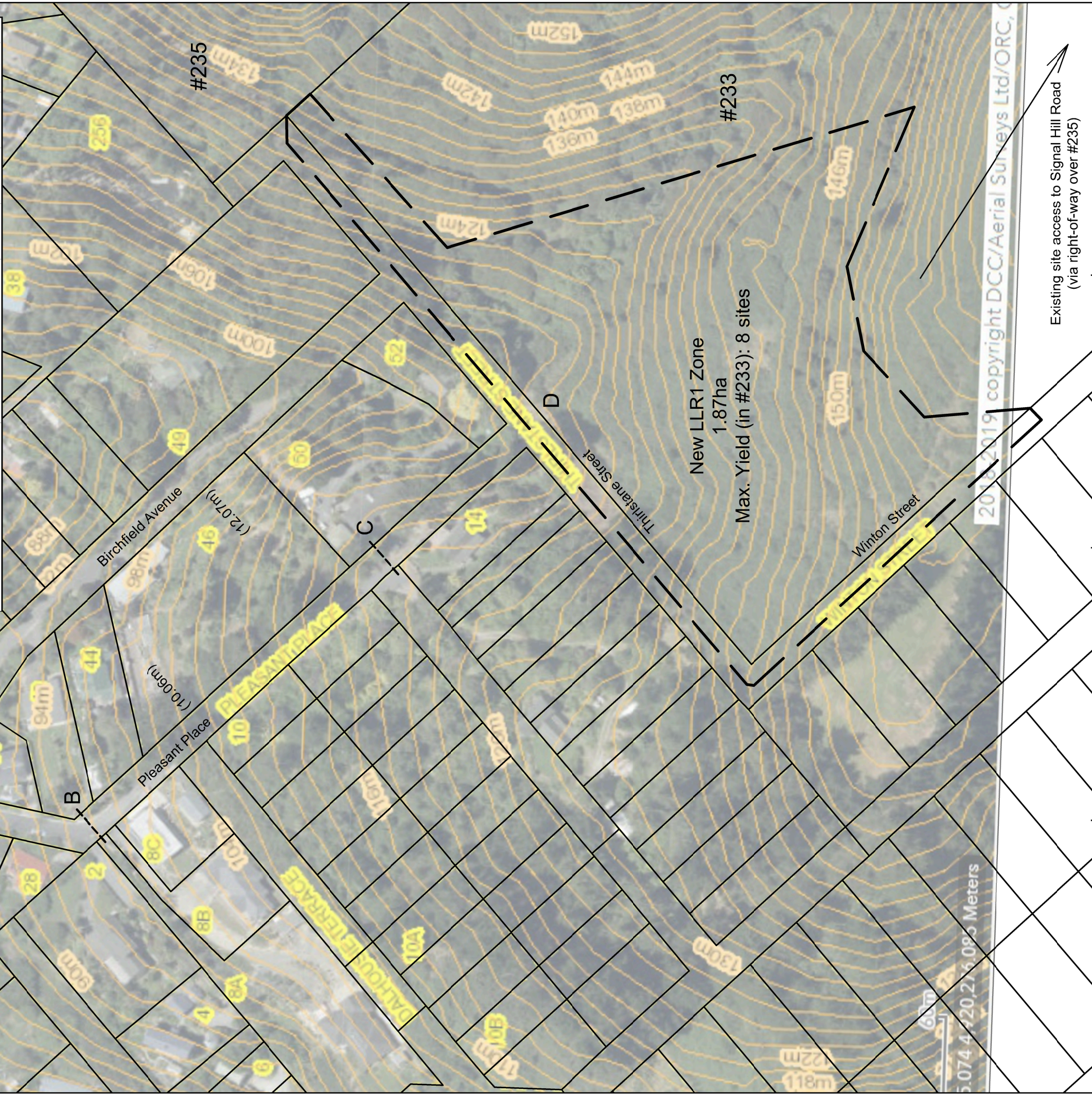


Pleasant Place - Feasibility					
Road Section	Existing Road Condition	Upgrades Proposed	Steepest Grade	Cost per m ²	Length of Road
A-B	Sealed formation width generally between 4.6m and 5.2m. Kerb and channel on one side. No footpaths.	Widen carriageway to 6.0m. Install a 2.0m wide footpath on one side. Potentially a second kerb and channel will be needed.	1:4:8	\$600	80m
B-C	Metal formation width generally between 4.6m and 3.9m. No kerb and channel. No footpaths.	Widen carriageway to 6.0m. Seal carriageway. Install a 2.0m wide footpath on one side. Install a kerb and channel on one side, and potentially also on the other side.	1:5:2	\$1,200	130m
C-D	No formed road.	Complete construction of new road, including a sealed 6.0m wide carriageway, a 2.0m wide footpath and at least one kerb and channel.	1:5:0	\$1,500	70m
Total Estimated Cost					\$309,000



Surveys by:	KAB	Original Size:	Scale:	1:1,250
Designed by:	KAB	Drawn by:	A3	
Checked by:		Approved by:		
Job Ref:		Sheet No:	1	DO NOT SCALE
Harding		Revision No:	A	Date Created: 02/08/2022

Possible Road Upgrade
Pleasant Place

Harry Harding
233 Signal Hill Road

PATERSONPITTSGROUP
 Surveying • Planning • Engineering
 Your Land Professionals
 www.ppgroup.co.nz
 0800 PPGROUP

BY: Kurt Bowen
 PLOT DATE: 02 August, 2022 - 3:52 PM