



WAIKOUAITI COAST COMMUNITY BOARD COMMUNITY PLAN

ADOPTED JUNE 2026



DUNEDIN | kaunihera
CITY COUNCIL | a-rohe o
Ōtepoti

dunedin

CONTENTS

	Page No.
SECTION ONE	
Introduction	4
SECTION TWO: KEY INFORMATION	
2.1 Background	4
2.2 Board Members and their Contact Details	6
Community Board Meeting Schedule	6
2.3 Map of Community Board Area	7
2.4 Our Community	7
SECTION THREE: PRIORITIES FOR OUR COMMUNITY	
3.1 Current Priorities	8
3.2 New Priorities	11
SECTION FOUR: COMMUNITY BOARD ACTIVITIES & ASPIRATIONS	12
SECTION FIVE: PLANS & SCHEDULES	
5.1 Emergency Plan – Community Board Response Plan	23
5.2 Discretionary Funding	25
5.3 Community Engagement	29
5.4 Rooding Schedule	30
SECTION SIX: COMMUNITY OVERVIEW	31

1 INTRODUCTION

This Community Board’s Community Plan summarises the needs and priorities of the communities within the Waikouaiti Coast Community Board area for the 2025/26 financial year, and the Dunedin City Council’s (DCC) 9-year plan 2025-2034. Its primary objective is to signal to the DCC those priorities for our community, with the ultimate goal that they are programmed into the DCC’s 10-year plan and funded by the DCC. These priorities are shown in section 3 of this plan.

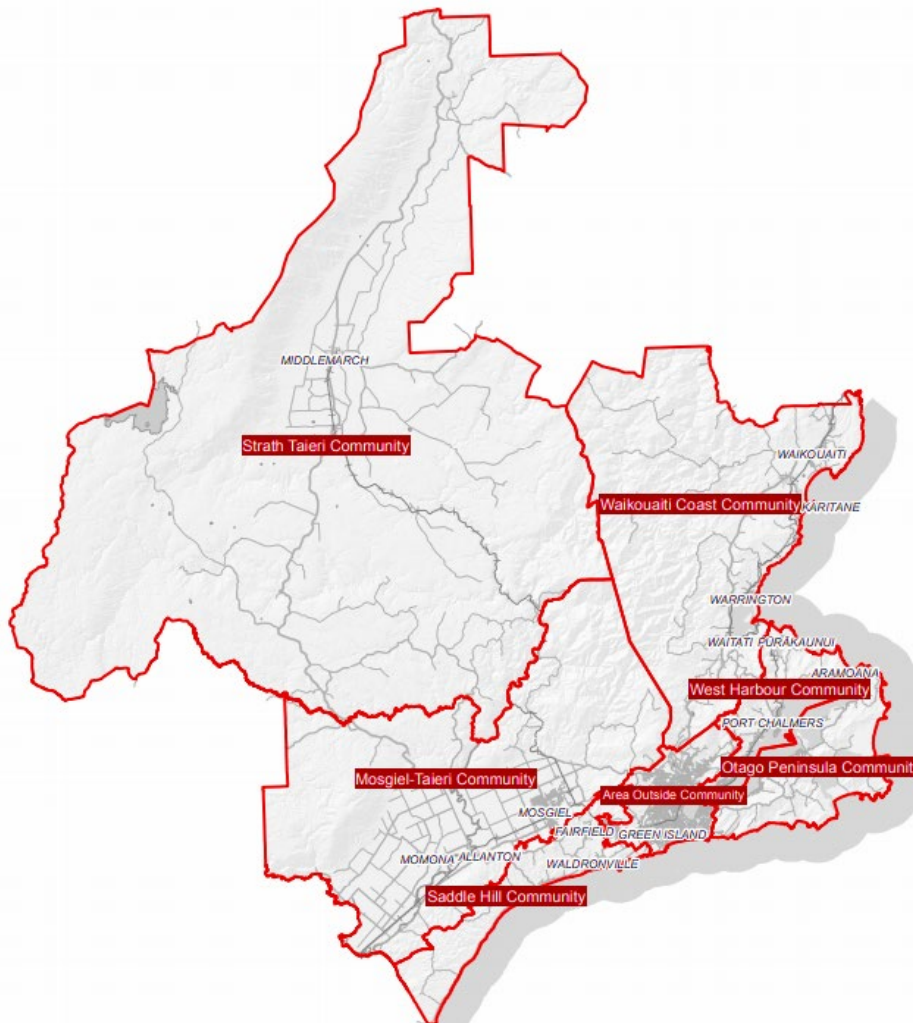
This Plan also includes activities that we, the Community Board, plan to undertake and the aspirations that we have for our community. Our most important role is to be an advocate for our community, but we also proactively support our community in other ways, and these are set out in section 4 of this plan.

This Plan is subject to change and revision as needs arise and priorities alter.

2 KEY INFORMATION

2.1 BACKGROUND

The City of Dunedin has six Community Boards within its boundary, as shown in the map below.



Each Community Board has six elected members, and one councillor representative. The Community Board members are elected every three years as part of the local body elections. Community Boards must comply with the same rules and regulations as council, such as the Local Government Act 2002.

The primary role of a Community Board is one of advocacy for its community. Each Community Board makes representations to the DCC on the priorities those boards have identified for their community area, that they would like to see included and funded in the council's annual plans and 10-year plans.

Any matters of an operational nature, e.g., the reporting of potholes, tree issues etc., are reported to council via the DCC's 03 477 4000 phone number, and do not form part of the Community Board's priorities.

Each Community Board holds public meetings approximately every six weeks, and these meetings are advertised on the DCC website and in the Otago Daily Times. The meeting schedule for the 2025 calendar year is provided on Page 6 of this plan. The agendas and minutes from those meetings are also available on the DCC website at <https://www.dunedin.govt.nz/council/council-meetings/agendas-and-minutes>

At the start of each meeting, there is a public forum session, which gives anyone from the community the opportunity to present to the board members their views on any topic. Registrations for public forum close 24 hours before the meeting starting time. If you wish to speak, please contact DCC Governance Support on 03 477 4000 or governance.support@dcc.govt.nz

Community Boards are allocated a Discretionary Fund of \$10,000 each year which can be used to provide grants to community organisations. Details regarding this can be found on pages 25–28.

2.2 BOARD MEMBERS AND CONTACT DETAILS

Board members for the 2025-2028 triennium are as follows:

Name	Cell phone	Email
Alasdair Morrison (Chair)	027 435 4384	info@calmarine.co.nz
Anna Knight (Deputy Chair)	020 477 7915	annaknight.wccb@gmail.com
Andy Barratt	021 890 048	asbarratt@gmail.com
Sonya Billyard	027 253 9205	billyardsonya@gmail.com
Danny Hailes	0274 895691	dhailesdcc@gmail.com
Geraldine Tait	021 217 5492	gersftait@gmail.com
Cr John Chambers (Councillor Representative)	021 449 542	john.chambers@dcc.govt.nz



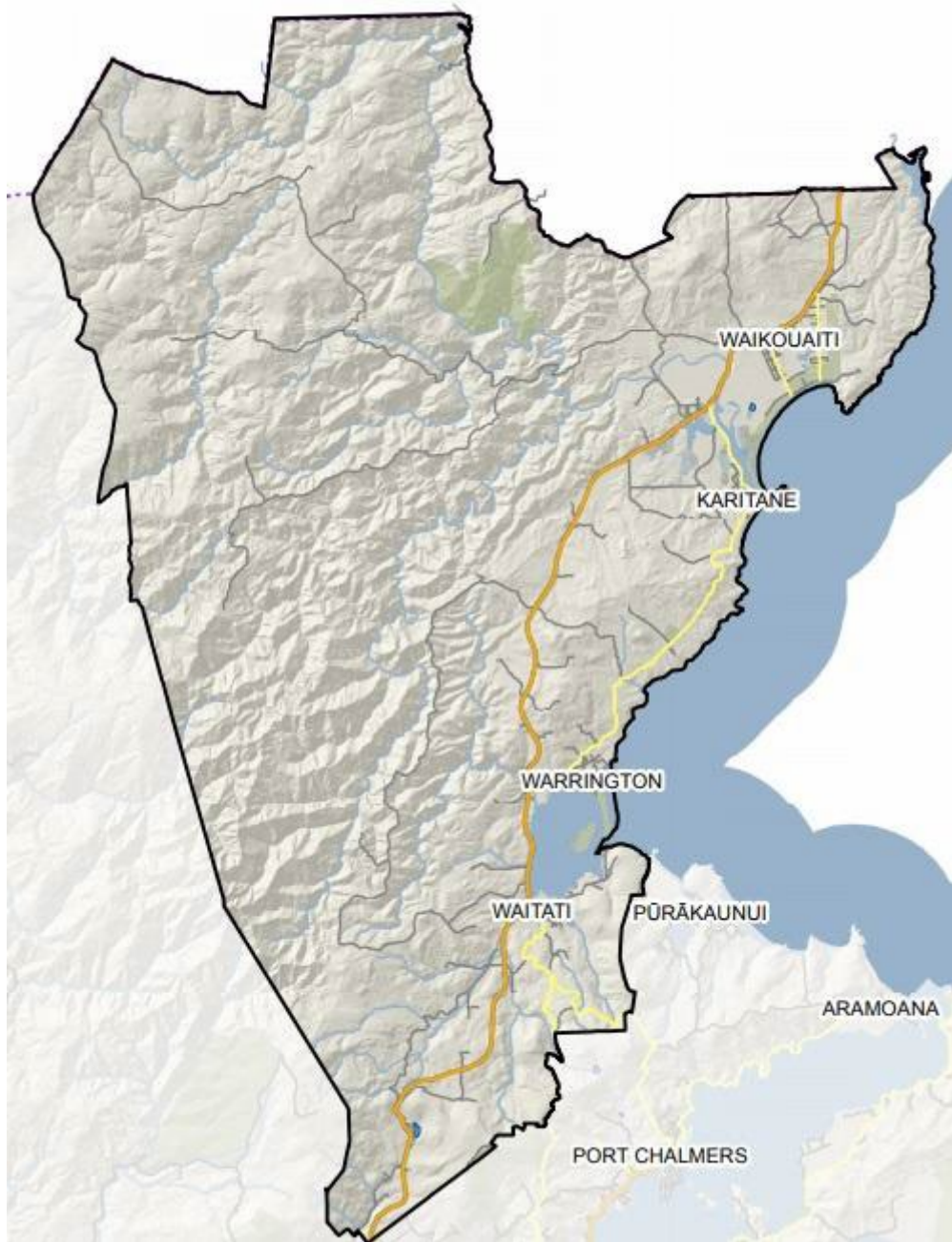
1

From left to right: Danny Hailes, Geraldine Tait, Cr John Chambers, Alasdair Morrison (Chair), Andy Barratt, Sonya Billyard, Anna Knight (Deputy Chair)

Meeting Schedule for 2026

Date	Venue	Starting time
18 February 2026	East Otago Events Centre, Main Road, Waikouaiti	5.30 pm
8 April 2026	Karitāne Hall, Coast Road, Karitāne	5.30 pm
10 June 2026	Warrington Memorial Hall, 11 Stephenson Street, Warrington	5.30 pm
12 August 2026	Dunedin City Council	5.30 pm
28 October 2026	Blueskin Bay Library, Harvey Street, Waitati	5.30 pm
2 December 2026	East Otago Events Centre, Main Road, Waikouaiti	5:30 pm

2.3 MAP OF THE WAIKOUAITI COAST COMMUNITY BOARD AREA



2.4 OUR COMMUNITY

The Waikouaiti Coast community is made up of seven settlements, including from the south (e.g. Dunedin) to the north: Waitati, Evansdale, Warrington, Seacliff, Hawksbury, Karitāne and Waikouaiti. Between each settlement, the landscape is mainly rural, consisting of farming, forestry, and stands of native bush. The population of the area in the 2013 census was 3,261 with a projected population from the 2025 census of 5,640 (see p. 39 for area distributions).

Details about our various communities can be found on pages 31–39.

3 PRIORITIES FOR OUR COMMUNITY

3.1 Current Priorities

We have identified the following priorities for our community that we would like to see included in the Council's 9-year plan 2025-2034. As noted earlier, this plan is subject to change, and so this list of priorities will be included on the agenda of each of our Community Board meetings.

Details	Est. Cost	When in 9-year plan 2025-2034	Justification	Priority
Upgrade of Waikouaiti Water Treatment Plant This has been progressing over the past few years and is due for completion by 2026. Budget has been allocated and no new funding is anticipated. Note that investigations will be carried out in future years to find alternative sources of raw water supply.	TBA	Complete in 2026	Public health & expectation	1
Northern Wastewater Schemes Warrington scheme resource consent has expired: Waikouaiti/Karitāne scheme resource consent expires 2027. Proposal is for new consolidated scheme with possible link to Waitati in the future.	\$72.8M	2026 onwards	Public health, & operational efficiency and environmental protection	1
Coastal Management Following presentation to Council in 2023 about issues in Waikouaiti River estuary and Karitāne Harbour, Council motion approved to create a Management Plan for this coastal area. Has it started?	TBA		Addresses effect of climate change. Protection of Council assets	1
Karitāne Fishermen's Wharf Building has been demolished and structural integrity of wharf to be remediated.	TBA		Health & safety. Protect community asset.	1
Hawksbury Lagoon Liaised with DCC, ORC & DOC regarding management of Hawksbury lagoon to minimise chances of flooding during heavy rain periods. ORC's plan is to introduce extra culverts.	TBA			1
Karitāne Road Safety Issues Worked with DCC to implement road safety and signage improvements in beach area, now completed. Coast Road intersections still to be implemented.	TBA		Health & safety	1

<p>Transfer Station and Resource Recovery Centre at Waikouaiti</p> <p>Following closure of the landfill in 2016 a transfer station was established on the site – currently managed by EnviroWaste Ltd under contract to DCC.</p> <p>Following a public meeting we held in 2017 a local group was formed – now known as ‘One Coast’. They have created a significant Resource Recovery Centre. Our Board has representation on this group.</p> <p>We request assistance with infrastructure development on the site: mainly a large shed, to allow considerable expansion of volume and range of materials diverted from landfill.</p>		Ongoing	Meets with DCC goals of waste minimisation	1
<p>Increase Allocation for Community Board Discretionary Fund</p> <p>Currently at \$10,000 per annum.</p>			Public concerns re timely delivery of services	1
<p>Warrington footpath upgrades including lighting in priority areas (for instance, along Coast Rd between Evansdale and Warrington: important route to bus stop). Requests have also been made to add well-used paper roads used as walking tracks to the mowing schedule.</p>	TBA		Public safety concerns and demand for disability/elder access and to meet population growth.	1
<p>Truby King Recreation Reserve</p> <p>Board is working with Parks & Recreation to achieve the aims of the revised Management Plan, which include the provision of toilets & tennis court refurbishment. New car parking has been established. Implementation plan is taking a long time. Update required on realistic timeframe.</p>	TBA	Year 1 and ongoing	The local community is very keen to see continued improvements in this historic area.	2
<p>Shared Pathways</p> <p>Support creation of shared walking and cycle pathways:</p> <ul style="list-style-type: none"> Between Waikouaiti & Karitāne. Between Warrington & Evansdale Between Evansdale & Waitati Between Waitati & Port Chalmers <p>[Design for railway bridge clip-on between Waikouaiti & Karitāne complete and approved.]</p> <p>[Construction of route between Waitati & Blueskin Road now complete.] Much of this work is being carried out by volunteers. DCC should be contributing to each stage, especially the existing pathway between Warrington and Evansdale.</p>			Meets community expectations.	2
<p>Continue with planting of native trees and shrubs on dunes alongside Matanaka Drive, Waikouaiti</p> <p>Update on progress & financing required.</p> <p>Update on forward plan required regarding weed control, especially wilding pines.</p>	Funded from proceeds of pine forest harvesting	Continuing from previous years - then progressing to outliers in following years	The pine forest, originally grown as a cash crop, was harvested 2015-16. Community meetings were held and there was good support to create an indigenous forest	2

<p>Maintain Facilities for Visitors Along Waikouaiti Beach Front</p> <p>This is a very attractive and popular area for visitors. Seating & picnic tables have been provided by local group, POWA.</p>	TBA	Ongoing	Popular requests for facilities such as seating, picnic tables and rubbish bins	2
<p>Provide Measures to Reduce the Effects of Coastal Erosion Along Waikouaiti Beachfront</p> <p>Establishing suitable plantings along the roadside has been recommended by DCC Coastal Specialist.</p>	TBA	Ongoing	Community concerns about this area	2
<p>Provide Disincentives for Vandalism Along the Waikouaiti Beachfront</p> <p>Effective signage and barriers are required to deter vehicular vandalism along the beach area.</p>	TBA	Ongoing	Required to protect valuable ecosystems, wildlife and DCC assets	2
<p>Enhance the Appearance of Waikouaiti's Main Road as the 'Northern Entrance to Dunedin City'</p> <p>Board to work with appropriate DCC departments, POWA and 'Keep Dunedin Beautiful'.</p>	TBA	Year 2 & 3, and ongoing upkeep	Public concerns	2
<p>Moana Gow Swimming Pool</p> <p>Liaise with Moana Gow Trust as necessary. We have a Board Member on the Trust. We support DCC annual grant provision.</p>	TBA	Ongoing	This popular facility is being maintained by the Trust. We ask that DCC funding will continue.	2
<p>Shortcut Road, Donald's Hill Road and Jones Road</p> <p>Board is working with DCC Transport Department and local community to provide an effective solution to safety concerns. Give consideration to alternatives for the road surface and drainage.</p>	TBA	Year 2 & 3	Concerns from community	2
<p>Warrington Beach</p> <p>Effective signage and barriers are required to deter vehicular vandalism along the beach area. Improved legible signage is required.</p>	TBA	Year 1 plus ongoing monitoring and maintenance	Community concerns about this area	2
<p>Warrington Domain</p> <p>Board will continue to monitor the effects of Freedom Camping, liaising with DCC Parks & Recreation.</p> <p>Board will continue to advocate for increased Freedom Camping facilities in Dunedin City to reduce congestion on the Domain.</p> <p>Board will advocate for recreation equipment for older children. Liaise with Halo Project for signage, to deter tampering with traps.</p>	TBA	Ongoing	Local concerns	2

<p>Doctors Point Beach Board will continue to liaise with local landowners and DCC Parks & Recreation to aid in the preservation of this area, including maintenance of carpark and vehicle access tracks.</p>	TBA	Ongoing	Much of the area is owned by the Waitati Beach Society, who have problems with unauthorised vehicular campers	2
---	-----	---------	---	---

3.2 Future Priorities

The following priorities for our community will be included in the Council's 9-year plan: 2025-2034.

Details	Est. Cost	When in 9-year plan 2025-2034	Justification	Priority
Continue to advocate for improved bus services between Dunedin City and our coastal communities. After much community feedback and liaison with Otago Regional Council a weekend service has started. A new service into Warrington has started during School Terms, further services will begin in October 2026. However, the service throughout the Board area is still inadequate.	TBA	Year 1 & 2 and ongoing	Public demand	1
Support connection from Waitati area to a consolidated northern wastewater scheme. Include design work at same time as consolidated scheme design and implementation.	TBA			1
The Board to be included in a working party which will look at all environmental issues in, and around, Karitāne Harbour and along our north coast area. Liaise with ORC on the Integrated Catchment Management planning.	TBA	Year 2 & 3	Public demand and DCC Asset Protection	2
Increased Provision for Local Walking Tracks (Liaise with DOC and ORC)	TBA		Board to investigate suitable sites for new tracks.	2
Warrington, Waikouaiti, Karitane Beaches Disability Access at strategic points. Consideration of additions of ramps and/or railings.	TBA		Public concerns	2

SECTION FOUR: COMMUNITY BOARD ACTIVITIES & ASPIRATIONS

MISSION STATEMENT of the Waikouaiti Coast Community Board

To respond to, and represent the community's concerns and aspirations, and to support community initiatives, through effective participation and consultation.

Activities and aspirations of the Waikouaiti Coast Community Board, classified by Dunedin City Council 'Community Outcomes'

Dunedin City Council through the 10 Year Plan 2012/13 – 2021/23 adopted 10 key community outcomes. The following table provides a key to the Board's activities and aspirations.

Board's Community Outcomes	
➤ Wealthy Community	➤ A Thriving and Diverse Economy
➤ Accessible City	➤ A Connected Community
➤ Safe & Healthy People	➤ A Safe and Healthy City
➤ Sustainable City & Environment	➤ A Distinctive Built Environment ➤ A Valued and Protected Natural Environment ➤ A Sustainable and Resilient City
➤ Supportive Community	➤ A Supportive Community
➤ Culture & Learning	➤ A Vibrant and Creative City ➤ A City of Learning
➤ Active City	➤ An Active City

Projects in relation to goals

WEALTHY COMMUNITY

Priority	Issues	Description	Action to be Taken	Comment
	Events and Festivals	<p>Support and promote cultural and recreational events in the community.</p> <p>Support local events and liaise with organisers.</p> <p>Encourage new events.</p>	<ul style="list-style-type: none"> • Provide support, where appropriate, to Community Events and Festivals. e.g. Community Markets; Blueskin Show; Karitāne Surfing Festival; Waitati Music Festival; Warrington Surf Lifesaving; POWA events; Truby King Reserve Open Day. • Support and promote cultural events of DCC and other non-profit community agencies. 	
	Tourism	<p>Identify and promote tourism opportunities that will provide a benefit to the Board's area and beyond.</p>	<ul style="list-style-type: none"> • Support the holding of consultation in the area about Tourism opportunities. • Support and promote the <i>“Coastal Scenic Route”</i>. • Support the promotion of our area as a destination for cycling and other active recreational activities, particularly the developing Coastal Communities Cycle Connection. • Increased Provision for Local Walking Tracks (Liaise with DOC and ORC) 	

			<ul style="list-style-type: none"> ● Support freedom camping and the provision of appropriate facilities within our area. 	
	Local Business	<p>Support existing businesses within our community.</p> <p>Identify and, where appropriate, support business development opportunities that will provide a benefit to the Board's area and beyond.</p>	<ul style="list-style-type: none"> ● Facilitate discussion between local businesses and Council's Economic Development Unit. ● Facilitate discussion between local business and key agencies as appropriate 	
	Technology	Encourage the development of infrastructure that supports and enables effective use of technology in our area.	<ul style="list-style-type: none"> ● Liaise with key infrastructure providers and agencies to encourage the extension, and enhancement of infrastructure in our area. 	

ACCESSIBLE CITY

Priority	Issues	Description	Action to be Taken	Comment
	General Roding Issues	Consult with affected parties e.g. residents, businesses and landowners.	<ul style="list-style-type: none"> ● Ongoing as issues arise. This is a major concern for our communities and involves risk to public safety. 	Particular attention to vegetation maintenance and poor condition / non-existence of footpaths.
	Safety Works	Liaise with DCC Transport Department to facilitate Safety Assessments on various roads within our community.	<ul style="list-style-type: none"> ● Ongoing as issues arise. ● Address road safety issues in Karitāne. 	Board has funded safety improvement on Sulisker Street, Karitāne.
	Storm Water Networks	<p>Maintain adequate storm water networks within our urban areas.</p> <p>Water run-off from roads.</p> <p>Cover large stormwater drains/culverts where they present a serious risk to safety.</p>	Review existing issues with the view to creating a schedule of priorities.	Liaise with ORC regarding flood mitigation at Hawksbury Lagoon.

	Dust Suppression	Ongoing monitoring.	<ul style="list-style-type: none"> Annual comment to Draft Annual Plan. 	Promote use of Bio-Oil & Otta Seal
	Weeds on Road & Verges & Railway Land	Weed suppression. Promote alternatives to toxic sprays.	<ul style="list-style-type: none"> Liaise with relevant departments and authorities. 	
	Signage	Installation of signs that are easy to read (Beaches, Reserves, Coastal Scenic Route, Location of Truby King Reserve, etc.).	<ul style="list-style-type: none"> Meet with appropriate DCC staff involved in signage and create an action plan to be followed. 	
	Bus Shelters	Upgrade and maintain.	<ul style="list-style-type: none"> Advocate for the adequate provision of bus shelters. Currently lacking in Karitāne & Waikouaiti 	New shelter has been provided in Karitāne beside store.
	Footpaths	Provision of adequate footpaths.	<ul style="list-style-type: none"> Encourage DCC to ensure footpaths/walking spaces provided are of a safe and appropriate width with appropriate lighting, that they are maintained to an acceptable standard, and that vegetation is controlled. Examine feasibility of restricting vehicles parking on footpaths. Refer to Schedules C & D. 	
	Rural Roads	Monitor for safety issues.	<ul style="list-style-type: none"> Grade regularly as necessary and ensure adequate drainage is in place and maintained. Coast Road: regular maintenance of road surface. 	

	Street Lighting	Provide adequate street lighting.	<ul style="list-style-type: none"> ● Monitor to ensure adequate lighting for new housing developments. ● Evaluate feasibility of lighting between Evansdale & Warrington. 	
	Ditches and Open Drains	Ensure that ditches and drains are cleared regularly.	<ul style="list-style-type: none"> ● Monitor condition of roadside drainage. ● Cover large drains and culverts where they present a serious risk to safety. ● Account for size of modern cars in drain design. 	
	Safe Walking Spaces	Concern that the current pedestrian access network within our Townships does not provide for a safe pedestrian environment.	<ul style="list-style-type: none"> ● Identify and prioritise through consultation with the Community and DCC staff strategic corridors of safe walking spaces within our townships, with particular focus on providing safe access to community facilities. 	

SAFE & HEALTHY PEOPLE

Priority	Issues	Description	Action to be Taken	Comment
	Northern Water Schemes	Water quality and sustainability.	<ul style="list-style-type: none"> ● Promote harvesting of rainwater where appropriate. ● Advocate for completion of Waikouaiti Water Treatment Plant upgrade. ● Support investigation of alternative water source apart from Waikouaiti River. 	Nearing completion. Budget already in place.

	Waste Management	Minimise waste to landfill.	<ul style="list-style-type: none"> ● Encourage waste minimisation initiatives. ● Support 'One Coast' group. ● Advocate for flexibility in wheelie bin collections in rural areas. 	
	Sewerage Systems / Effluent Disposal	System upgrades.	<ul style="list-style-type: none"> ● Warrington Resource Consent has expired. Waikouaiti/Karitāne Resource Consent expires in two years. Support DCC 3 Waters Department in discussion with ORC about existing consents, and approval for future combined facility. ● Advocate for design work for Waitati connection to be carried out at same time as new combined facility as a priority. 	
	Waitati Effluent Disposal	Advocate for an assessment of the community needs and environmental impact of the existing disposal systems within Waitati Township.	<ul style="list-style-type: none"> ● Facilitate engagement with the Waitati community to gain an understanding of the community's needs and aspirations with regard to effluent management – connecting to future northern combined scheme. 	

	Public Toilets	Advocate for the provision of additional public toilet facilities as appropriate. Ensure maintenance of existing toilets is adequate.	<ul style="list-style-type: none"> • South end of Waikouaiti River Bridge rest area off SH1 requires toilets (proximity to estuary). 	
--	----------------	---	---	--

SUSTAINABLE CITY & ENVIRONMENT

Priority	Issues	Description	Action to be Taken	Funding/Resourcing
	Reserves	Management Plans: <ul style="list-style-type: none"> • Warrington/Waitati: Rabbit Island • Evansdale Glen • Mt Watkin/Hikaroroa • Truby King Reserve • Hawksbury Lagoon • Waikouaiti sporting & recreational facilities 	<ul style="list-style-type: none"> • Support staff with the production of Management Plans, in consultation with the community, for all reserves within the Board's area. • Continue with work at Truby King Reserve, including provision of toilet facilities, tennis court refurbishment and signage including information boards. • Advocate for serious rabbit control. 	
	Residential and Rural Development	Meet with the DCC Planning Department to understand their current views regarding residential expansion.	<ul style="list-style-type: none"> • Monitor the effects of increased rural and residential activity. 	

CULTURE & LEARNING

Priority	Issues	Description	Action to be Taken	Funding/Resourcing
	Libraries	Blueskin Bay Library, Waikouaiti Library.	<ul style="list-style-type: none"> Advocate for the retention of DCC service facilities at the community libraries. 	
	Schools	Waikouaiti, Karitāne, Warrington & Waitati Schools + Early Childhood Centres.	<ul style="list-style-type: none"> Maintain contact with school boards and provide support where appropriate. 	
	Waikouaiti Museum & Heritage Centre	The museum is a key community asset that actively promotes the area's heritage.	<ul style="list-style-type: none"> Support volunteers as appropriate. 	

SUPPORTIVE COMMUNITY

Priority	Issues	Description	Action to be Taken	Funding/Resourcing
	Community Plan		<ul style="list-style-type: none"> Review Community Plan regularly. 	
	Communication	Newsletters. Media Liaison. Community Liaison.	<ul style="list-style-type: none"> Provide articles for local and citywide newsletters/newspapers/e-publications. Maintain a Facebook page. Suggestion boxes at Waitati and Waikouaiti libraries (to be cleared ten days prior to each meeting). 	
	Rates & DCC fees	Monitor/evaluate and advocate where appropriate.		

	Retain Community Board and Councillor Representation	Encourage community input	<ul style="list-style-type: none"> ● Actively participate in the representation review. ● Advocate for increase in discretionary funding. 	Increase in Discretionary Funding could save DCC departments money.
	Advocate for DCC funding to Board to support part-time employment of suitably trained individuals to look after basic tasks such as vegetation control, minor road & footpath maintenance issues.		<ul style="list-style-type: none"> ● Discuss at annual plan hearings – should be a cost-saver to Council. 	
	Meetings	<p>Promote availability of Public Forum to raise community issues.</p> <p>Community Board Conferences.</p> <p>Liaison with Kati Huirapa Rūnaka ki Puketeraki</p>	<ul style="list-style-type: none"> ● Advertising/newsletter. ● Promote, facilitate and participate in regular conferences involving Dunedin's Community Board members. ● Hold Community Board meetings at Puketeraki Marae as appropriate. 	
	War Memorials Cemeteries	<p>Waitati Waikouaiti Seacliff Karitāne</p> <p>Waitati, Waikouaiti, Merton (Private)</p>	<ul style="list-style-type: none"> ● Ensure maintenance is undertaken to an acceptable standard. ● Advocate for the creation of cemetery management plans. 	

			<ul style="list-style-type: none"> ● Establish some form of acknowledgement of unmarked burials of former Seacliff Lunatic Asylum patients buried in the Waitati Cemetery. 	
	Access for Disabled People	Develop accessible facilities in the area for disabled people.	<ul style="list-style-type: none"> ● Evaluate local facilities and infrastructure to determine accessibility and advise Council as appropriate. ● Liaise with DCC Disabilities Group. 	
	Heritage Protection	Heritage Values.	<ul style="list-style-type: none"> ● Encourage the preservation of heritage items and, where appropriate, promote heritage values and assets within the Board's area. 	
	Community Halls	Ensure continued provision of community hall facilities in local communities.	<ul style="list-style-type: none"> ● Liaise with hall committees and support their work and advocate for continued DCC annual grants. 	
	Community/Farmers Markets	Community Markets.	<ul style="list-style-type: none"> ● Support community market days as appropriate. 	

ACTIVE CITY

Priority	Issues	Description	Action to be Taken	Funding/Resourcing
	Playgrounds	<p>Existing Community Playgrounds</p> <ul style="list-style-type: none"> ● Karitāne Foreshore ● Waikouaiti Sportsground ● East Otago Events Centre ● Seacliff ● Warrington ● Waitati <p>Additional Playgrounds Required:</p> <ul style="list-style-type: none"> ● Waikouaiti Events Centre ● Adjacent to Karitāne Hall 	<ul style="list-style-type: none"> ● Advocate for the creation of playgrounds for older children. ● Advocate for additional playgrounds in Waikouaiti & Karitāne. ● Ensure community playgrounds are adequately maintained. ● Upgrade recreational area adjacent to Karitane wharf in consultation with DCC, Kati Huirapa ki Puketeraki and Plunket Society. 	

5.1 COMMUNITY BOARD EMERGENCY PLAN

The Dunedin City Council (DCC) has a statutory role under Section 64(1) of the Civil Defence Emergency Management Act to plan and provide for civil defence emergency management within its district during all phases of an emergency: Reduction, Readiness, Response and Recovery.

The DCC promotes a policy of integrated emergency and risk planning and management within Council and with other emergency response agencies in the community.

As elected representatives, Community Board members are acknowledged as an important interface between the community and its local agencies during all phases of an emergency.

Communities are also represented by a network of Emergency Management-trained Community Resilience Groups (CRG) which are optimised to activate rapidly and provide immediate information and support during an emergency response.

Emergency Management Otago encourages the integration of all these entities in preparing for, and responding to, emergency events.

Two established CRGs operate in the Board's area: Waikouaiti-Karitāne and Blueskin Bay. Whilst these groups consist of a central core of trained volunteers, each group has the flexibility to sub-divide on a geographical basis. A flooding event in Waikouaiti may well require Karitāne-based CRG members to operate independently. Likewise, Waitati, Evansdale, Warrington and Seacliff may all require a de-centralised response should any of these locales become isolated. CRGs will operate from established *Community Hubs* at East Otago Events Centre and Waitati Hall. Secondary and Alternative Hub locations are identified and will be used as circumstances dictate. Additional support is likely to be provided by Kāti Huirapa Rūnaka ki Puketeraki based at the Puketeraki Marae, Karitāne.

Each of the Board areas based CRGs has developed a detailed Community Response Plan (CRP). Addressed at each specific local hazard, the CRP contains a detailed Action Plan for CRG members and critical community information such as Evacuation Routes and Assembly Areas. Community Resilience Plans are also available. This is aimed at providing the wider community with a more generic guide to local hazards and emergency preparation.

Links can be found here:

<https://www.otagocdem.govt.nz/media/1529/waikouaiti-online-vs2.pdf>

<https://www.otagocdem.govt.nz/media/1525/blueskin-bay-online-vs2.pdf>

Waikouaiti Coast Hazard Analysis

Event	Likelihood	Consequences	Duration/ Recovery Time
Snow (Disruptive)	Frequent	Isolation. Loss of utilities: electricity and communications. Emergency service response affected.	Days/Days
Snowstorm	Probable	Isolation. Delivery of supplies disrupted. Emergency service response affected. Rural economic activity impacted. Structural damage to buildings. Disruption to utilities: electricity and communications.	Weeks/Year
Flooding	Probable	Isolation of rural properties. Inundation of land/houses. Rural economic activity impacted Recreational activities disrupted. Disruption to utilities: roads, bridges and rural water schemes.	Days/ Weeks-Year
Extreme Winds (Severe Gale/ Tornado)	Frequent	Property damage. Roads blocked by fallen trees. Risk of injury from flying materials. Increased risk/consequence of fire. Disruption to utilities: electricity and communications.	Hours/Weeks
Major Transportation Accident: Road, Rail, Air	Probable	Mass casualties possible. Retrieval difficulties (access). Logistics difficulties. Environmental damage. Disruption to other transportation.	Days/Days
Rural/Urban Interface fire	Probable	Property losses. Roads closed. Rural economic activity impacted*. Environmental damage in water catchments*. Disruption to recreational uses. Disruption to utilities: electricity and communications.	Days/Months *Years
Landslide	Probable	Property losses. Roads closed. City water supply pipe disrupted. Environmental damage in river. Disruption to recreational activities (Rail).	Days/weeks - months
Drought	Probable	Rural economic activity impacted. Rural water schemes diminished. City water supply diminished. Increased fire risk. Psychological impact on rural communities	Months/Years
Pandemic/COVID19	Possible	Liaise with authorities and community as necessary.	Unknown at this stage

5.2

DISCRETIONARY FUNDING FOR COMMUNITY BOARDS

The Waikouaiti Coast Community Board has financially supported numerous local projects and causes in recent years, as well as providing community leadership by encouraging networking with other community boards, circulating newsletters, and undertaking appropriate training. The Board receives \$10,000 per annum (subject to annual review by Council) which is allocated based on the following guidelines:

GUIDELINES

Implicit in the decision to provide discretionary funding for Community Boards are the following principles.

- The discretionary budget should be funded by the general rate.
- Each Board receives the same amount regardless of the size of its territorial area, population, or the capital value of the community area.
- Discretionary funding by the Boards should be identified as a line item in the Annual Plan, so it is subject to public comment in the consultation process. It is over to individual community boards if they wish to determine or indicate a likely apportionment of allocations.
- If expenditure is used for works or services of local significance to the Community Board, where there are consequential ongoing support or maintenance costs which will need to be funded by the Council in future years, the Council's prior approval is required.
- Discretionary expenditure is granted to applicants, with the merits of projects evaluated on a case-by-case basis.
- Community Boards need to be aware of the Council's contracts and capital expenditure projects proposed for each community area before the Board finalises discretionary funding allocations.

Note

- Applicants may also be eligible for support from the Council via another of its grant schemes or policies. The Council allocates funds to support community initiatives via its Community Grants Scheme (operated under the Community Initiatives Plan – Funding). Applicants should contact the Community and Recreation Services department to discuss the criteria for receiving funding support.

Guidelines for allocations from the Waikouaiti Community Board discretionary fund

The Waikouaiti Coast Community Board may make allocations from its fund based on the priorities set in its Community Plan, and may make allocations in accordance with the following criteria:

Category A: Community Grants

Available for community-initiated projects. Non-profit-making groups and/or organisations wishing to apply for funds under Category A will be required to complete the *Application for Funding from the Waikouaiti Coast Community Board* form.

Applications are subject to community/public scrutiny and comment. Therefore, applications are to be lodged no less than 10 days before the Community Board meeting at which it is to be considered.

Where an application is for part funding of a project the funds will not be released until the Board is satisfied the project (or the stage of the project to which the application relates) will proceed.

Category B: Board Projects/Activities

For Community Board initiated community projects and the Board's related activities, for example such items as attendance at conferences or training workshops, advertising and communication, producing newsletters, undertaking community surveys/questionnaires, and hosting functions.

The Board will make allocations under Category B as the need arises.

Note

The Application for Funding form is available on the Dunedin City Council website – https://www.dunedin.govt.nz/data/assets/pdf_file/0006/148281/WCCB-Application-for-Funding.pdf

**Application for Funding from the
Waikouaiti Coast Community Board**

Date: _____

Name of group applying for funds:

Contact person: _____ Position held: _____

Address:

_____ Post Code: _____

Contact Phone Number: _____ Email: _____

Short description of the project you are seeking funding for:

Please attach any additional information, which may be useful in explaining the project e.g.: quotations or itemised budget. Please note if considered necessary the Board may seek additional information prior to making a decision.

Amount sought from Waikouaiti Coast Community Board: \$

Total cost of project: \$

Amount already raised: \$

How will the rest of the project cost be funded?

What is the timeframe for completing the project? [OR What is the date of your event/project?]

Is your project a one-off, annual or biennial event?

Detail the benefits to your organisation and/or the wider community which will result from this project.

Has your group made an application to the Board for funding within the last five years?

Yes No

If granted, how much and what was that money used for?

All approved funding is subject to the following:

- 1 *Where an application is for part funding of a project the funds will not be released until the Board is satisfied the project or the stage of the project to which the application relates will proceed.*
- 2 *The organisation/group must report back to the Board within six months of the project completion or six monthly until completed.*

NOTES: Applications will be considered on their merits, regard will also be had to ensuring a fair allocation over all the Board area. Any funds approved MUST be paid directly into the organisation's bank account, please supply a copy of the bank account name and number separately.

This application form is also available on www.dunedin.govt.nz and should be returned to, Governance Support, Dunedin City Council, PO Box 5045, Moray Place, Dunedin 9058 Email: governance.support@dcc.govt.nz or contact: Alasdair Morrison (Board Chairperson) Telephone 027 435 4384

Waikouaiti Coast Community Board

Funding Assistance Project Completion Form

Please complete and return this form within three months of the project's completion.
Return completed form to:

The Governance Support Officer
Waikouaiti Coast Community Board
Dunedin City Council
PO Box 5045
Dunedin 9054

or email gso@dcc.govt.nz

Name of recipient organisation		
Contact person		
Phone #		Cell
Email		
Date of grant		
Project name		
Project completion date		
Actual project cost (Please include detailed breakdown of expenditure)		
Comments		
Signature		

5.3 COMMUNITY ENGAGEMENT PLAN

Ways to have your say on the Community Board's Community Plan

The Board is very keen to receive your comments on an on-going basis, and you may speak to your comments at any Board meeting. Members of the community are invited to provide feedback;

- *Verbally... by contacting a board member directly, anytime*
- *Written... addressed to the board, postal or email addresses below*
- *In person... to the board at public events*

Please clearly state the issue or suggestion you would like the Community Board to consider, or the specific action you would like to be taken. For requests to speak at the public forums at the start of Community Board Meetings, your request must be made with at least 24 hours' notice (in line with DCC protocol).

Please send written communication to:

The Chairperson
Waikouaiti Coast Community Board
c/- Dunedin City Council
PO Box 5045
Dunedin 9054

Email: info@calmarine.co.nz

DCC Governance Support - governance.support@dcc.govt.nz

5.4

Roading Issues – December 2026 Waikouaiti Coast

Location	Issue	Request
Waikouaiti – Beach Street	Vehicle size, frequency, speed	Safety assessment; Check adherence to Resource Consent Conditions
Waikouaiti – Henry Street	Vehicle speed, dust, noise	Assessment for dust suppression. Bio Oil?
Waikouaiti – Main Road	Vehicle speed	NZTA issue. Driver feedback signs now installed north & south entrances
Karitāne – Coast Road	Speeding in ‘5 roads’ area	Improve signage
Warrington – Hill Road	Vehicle speeds	Safety assessment - considering population increase and return of Freedom Camping vehicles.
Warrington – general	Increased vehicle numbers due to residential development	Safety assessment
Warrington – general	Many footpaths in poor condition	Repair & Maintenance
Waitati – Doctors Point Road	Vehicle speeds	Assessment & signage - considering impending population increase
Waitati – Harvey Street	Vehicle speeds	Assessment & signage
Waitati – Shortcut Road	Road condition; vehicle speeds; signage; overhanging vegetation	Safety assessment & upgrade m- ‘Otta Seal’ or ‘Bio Oil’?
Waitati – SH1 intersection	Vehicle speeds around the curve	NZTA issue
Warrington – Evansdale	Condition of footpath	Repair and Maintenance
Evansdale – Jones Road	Road condition; drainage, vehicle speeds; signage; overhanging vegetation	Improved drainage required followed by an assessment of alternative road surfacing and safety signage.
Karitāne	Scarp St/Coast Road intersection	Safety review
Apes Road by the Marae	Buses parking on Apes Road and blocking the road.	Monitor result of recent parking upgrade.
Coast Road, Karitāne south of community hall	Footpath very narrow and has a steep drop	Assess and repair

Section 6: Community Overview

INTRODUCTION

The area has a rich Māori heritage, particularly Karitāne, formerly known as Waikouaiti, an important fishing village in the early 17th century. The peninsula there, Huriawa, was the pa site of the principal chief of the Ngāi Tahu Tribe. Even after heavy losses at Mapoutahi Pa and in other 18th century fighting, 200-350 Māori lived in the Waikouaiti area. They formed tracks linking Waitati and Karitāne to the Taieri, which were later also used by the earliest Europeans. There is a small percentage of the population who are Kai Tahu. Another smaller settlement was situated at Warrington in the vicinity of the existing reserve.

The Waikouaiti Coast community is made up of seven settlements, including from the south (e.g. Dunedin) to the north: Waitati, Evansdale, Warrington, Seacliff, Hawkesbury, Karitāne and Waikouaiti. Between each settlement, the landscape is mainly rural, consisting of farming, forestry, and stands of native bush. The population of the area in the 2025 census was 5,640.

State Highway One connects most of the settlements and is the main transport corridor through the community. Also, Coast Road and Mt Cargill Roads are major scenic corridors that link the communities and have magnificent views of the coastline. There are also Department of Conservation and Dunedin City Council Scenic and Recreational Reserves (7) within the coastal area.

The Waikouaiti area was the first permanent European settlement in Otago, and now the population is predominantly European (2001 Census). In 1837 a whaling station was established at Karitāne by the mouth of the Waikouaiti River. In 1840, Johnny Jones, the owner of the whaleboat, arranged passage for several immigrants who then settled on farms in the area. By the time the first European settlers arrived in Dunedin in 1848, the land around Waikouaiti was already being farmed and was able to provide food for the new residents. The original homestead of Johnny Jones – Matanaka – is a recognised site of interest, has heritage status, and is frequently visited by locals and tourists. In 1859, a metalled horse track (Old Mt Cargill Rd) to Blueskin Bay from Dunedin was commissioned and opened up the Northern Coast for settlement. In May 1878, the main trunk line from Dunedin to Waikouaiti was opened. The train provided Dunedin residents with access to the area for beach days, picnics and holidays.

PHYSICAL ATTRIBUTES AND FEATURES

The Waikouaiti Coast Community Board serves an area containing a wide variety of land types, ranging from the volcanic hills of the Silverpeaks in the west to the yellow sandstone cliffs and sandy beaches along the shores of the Pacific Ocean in the east. Dominant features include the summit of the Northern Motorway and the Kilmog Hill on State Highway 1, both of which are occasionally closed by winter snowfalls. Of the western hills, Mt Watkin/Hikaroroa (616 m), Derdan Hill (443 m) and Baldie are of particular note. The area is drained by two major river systems: on the north side of the Kilmog, the twin branches of the Waikouaiti River join to the west of SH1 and issue into Waikouaiti-Karitāne Estuary system; south of the Kilmog, the Waitati River and Careys Creek flow into Blueskin Bay. Some features of the spectacular and undeveloped coastline include the sandstone cliffs at Matanaka, Huriawa Peninsula and the extensive beaches at Waikouaiti, Karitāne, Warrington and Doctors Point.

The climate is moderate. Winter snowfalls are usually confined to the higher country. Droughts are not uncommon, especially in the coastal area to the north of the Kilmog. Easterly rains sometimes result in floods in the Blueskin Bay and Karitāne areas. The land between Waikouaiti and Evansdale is prone to slumping and to small slips in wet weather.

The natural vegetation of the region has been heavily modified since human civilization. The clearance of native bush, begun by local Māori, intensified with the arrival of European settlers. The wetlands in the Waikouaiti area have been extensively drained. The land has been mainly converted to agricultural purposes. The steeper land supports extensive sheep and cattle grazing, along with large-scale forestry. The rolling country closer to the coast is employed for livestock and agriculture ventures but dairying is mainly limited to the alluvial plains of the Waikouaiti River and the Seacliff Coast. Small pockets of fertile land are used for horticulture and market gardening.

Several important stands of native bush remain in the area, with approximately 400 hectares in reserves. Mount Watkin Reserve, with its stand of native bush, is an area of high conservation value. The Orokonui Ecosanctuary near Waitati is an ambitious conservation project run by the Otago Natural History Trust. Some 300 hectares of regenerating bush have now been contained within a predator-excluding fence. The Ecosanctuary opened to the public in late 2009 and has become a major visitor attraction.

The rocky coastline is broken by two estuaries; the broad, shallow Blueskin Bay, which is fed by the Waitati and Evansdale Streams, and the narrow, deeper Waikouaiti River estuary. On the seaward side, both have sandy beaches with extensive dune ecosystems and are used by a large number and variety of seabirds, as well as sea lions. The Hawksbury Lagoon is a particularly important wildlife reserve, providing refuge for many ducks, and the Waikouaiti River is known as an important whitebait habitat. A local community group is actively involved in the preservation and restoration of the lower river and estuary between Waikouaiti and Karitāne.

Population Statistics of Area

Location	2001	2006	2013	2018	2025
Waikouaiti	1095	1095	1122	1194	1310
Karitāne	396	348	360	405	430
Warrington	396	426	450	489	560
Waitati	495	501	513	573	590
Evansdale* Buckland's Crossing	1191	1230	1425	1482	1670
Total Population in Board Area:	3573	3651	3930	4143	5640

** It should be noted that Hawksbury/Evansdale/Buckland's Crossing area incorporates the rest of the population outside of the main centres in the Waikouaiti Coast area.*

TOWNSHIPS/DISTRICT

The Coast is made up of seven independent settlements dotted along the coastline and motorway. One of the challenges for the Waikouaiti Coast area is to enhance the area's cohesiveness and Community Spirit as a whole, while maintaining the individuality of each community. Waikouaiti, Karitāne, Warrington, and Waitati have their own citizen groups. These four settlements each have their own primary school, and Waitati and Waikouaiti have Dunedin City Council's (DCC) community libraries. Changes over the years include traditional holiday homes being converted to permanent residences; new lifestyle blocks being created on rural land, and more residents commuting to work in Dunedin. Public transport availability in the area could be improved. Presently, buses run along the motorway from Palmerston to/from Dunedin and has regular stops at Karitāne, Waikouaiti, Evansdale, and Waitati. In the past year or so, the bus service has extended into Warrington to cater for schoolchildren. There are also private bus services running between Dunedin and more northerly towns.

In keeping with the Dunedin City Council's vision statements, the Board would like to work towards encouraging sustainable living within the area, which means using and then cleanly renewing our environmental resources so that our ecological footprint is reduced. This also involves ensuring that our core infrastructure and services (e.g. human made resources (e.g. pipes, roads) and environmental resources, general practitioners and public transport) are monitored, maintained and improved. The Waikouaiti Coast Community Board would like to support nature conservation in the region.

Community Descriptions from North to South

Waikouaiti (2025 population: 1310)

Waikouaiti is a large dormitory suburb of Dunedin, has a reputation for being a popular place in which to retire, and is popular with weekend visitors to the beach and river. The population has remained stable over the last 10 years. Waikouaiti has a large community and events centre, a primary school, fire station, police station, doctors' rooms, a library, a veterinarian, boarding kennels, a golf club, a DCC transfer station and resource recovery facility, a rugby club, a campground, holiday accommodation, a beach, a grassy domain, a lagoon, a river, a museum, and a racecourse. These contribute to the lives of Waikouaiti's residents, and volunteer working groups have formed to help the Council maintain and encourage the sustainable use of DCC amenities. The river is the primary source for the town's water treatment plant which supplies drinking water to the area's residents. Sewage and wastewater are treated and dispersed amongst trees on the coastal dunes. The Board recognises that it is important to maintain the biodiversity of the river in order to keep it healthy.

Waikouaiti's location on State Highway One contributes to the township's commercial activity. Businesses here include a small grocery store, market gardens and horticulture, a baker, hardware store, petrol station, garages, a fish and chip shop, second-hand stores, pubs, a café, a clothing store, and arts and craft stores. These provide local and convenient supplies to the community. It also has large egg-producing poultry farm. Waikouaiti also serves a service centre for the nearby Oceana Gold Mine.

Karitāne (2025 population: 430)

Karitāne is a coastal town on the mouth of the Waikouaiti River and has some commercial sea fishing vessels. It has an important local history, including that of the early Māori (now described on the track around the Huirawa headland), whalers, the first white settlers in Otago and Sir Frederic Truby King (the founder of Plunket and director of Seacliff Mental Hospital).

Huirapa Marae is the Kai Tahu (Mana Whenua of the area) Marae, which is situated at Puketeraki overlooking Karitāne. The marae is very active and contributes a great deal to the community. It is frequently used by groups from outside the area for marae visits.

Karitāne has a primary school, a community hall, a small shop (including a petrol pump), holiday accommodation, a swimming beach, and an inlet formed by the Waikouaiti River. There are active community groups in the area, including the Hall Committee and the Fishing Club.

The recreation reserve on the river mouth and the beach are especially popular during summer, and recreational activities for visitors, including the Huirapa Track (developed by Kai Tahu), ocean wildlife tours, kayaking tours and rentals, and horse trekking are increasing. Many of the permanent community work in Dunedin.

Warrington (2025 population: 560)

Warrington is a coastal settlement on the north side of Blueskin Bay. It has a sandy beach on the Warrington Recreation Reserve with an active surf lifesaving club and popular playground and picnic area for Dunedin as well as local residents. Freedom Camping is permitted on the Warrington Domain. Historically, the area was an important Māori settlement and the middens at the base of the spit contain large numbers of moa bones. The tidal bay and the beach are important for wildlife. Locally, the numbers of wading birds in the area are second only to those found on Otago harbour. Birdlife here includes oystercatchers, godwits, gulls, terns, shags, herons and spoonbills.

It has a primary school, a hall, a play centre, and one church, but only a few businesses, and small arts and craft operations. The community hall is well used for meetings, parties, Tae Kwon Do classes and various community functions. The former early childhood centre now operates as a community hub, run by the local volunteer group Waiputai Trust and is used for many community activities

Waitati (2025 population: 590)

Waitati is the closest settlement to urban Dunedin and is a settlement stretching around the south side of Blueskin Bay to Doctors Point. The beach at Doctors Point is popular on weekends and is used to launch small boats and kayaks. Cockles in the bay are harvested commercially, some for export. The Orokonui Ecosanctuary occupies 300+ hectares in the valley upstream and is open to the public. This sanctuary is a safe home to indigenous fauna and flora. The ecosanctuary is surrounded by a predator-proof fence. The tallest tree in New Zealand (an Australian gum tree) is also in the sanctuary.

Waitati has a primary school, a play centre, a community hall, a fire station, and a library. Its businesses include a shop, a garden centre, cafés, grocery store, art gallery/live music venue, and holiday accommodation. It has an active community which regularly holds events such as dances, markets, flower shows, the annual Music Festival and the large annual Blueskin on Show event at the

showground. The Dunedin Railways excursion train runs train trips from Dunedin to the North Coast in the summer months.

Evansdale/Bucklands Crossing (2025 Population: 1670)

All other areas in the Waikouaiti Coast area out of the main centres described above are included in this **Evansdale Section of the Census**.

Hawksbury is a residential and commercial development on the former Cherry Farm hospital site. The Dunedin City Council's well-used Moana Gow community swimming pool is located within the complex and is operated by a Community Trust. Hawksbury also has a cheese factory, a butchery, and facilities for arts and craft workshops. The East Otago Blokes Shed has been established using former Cherry Farm maintenance workshop space. Hawksbury has a private sewerage scheme and purchases potable water from the Waikouaiti municipal supply.

Seacliff is a small settlement on Coast Road alongside the railway. Janet Frame wrote about the local railway station on her way to the old Seacliff Mental Hospital. It is a close community, which designed and built its own playground. The Dunedin City Council recently updated the Truby King Recreational Reserve Management Plan, and this is being managed by Reserve Management Committee which includes Community Board Members, Seacliff residents and DCC staff. Seacliff is also known for its organic gardening and arts and craft community. Seacliff has dedicated sewage treatment plant, managed by Dunedin City Council.

Evansdale Junction has only a few dwellings. It is at the intersection of State Highway One and Coast Road. Evansdale now has a successful Craft Brewery, pub and live music venue at the site of the former general store and garage. On the west side of the motorway is a small recreation reserve - Evansdale Glen - with walking tracks up to the Silverpeaks Forest.

Rural Land: Other than these three small settlements, the Evansdale Census Area is a predominantly rural farming community (sheep, cattle, dairy cows, & forestry), although in recent years there has been an increase in lifestyle blocks and subdivisions.

Community Activities

Economic

The Community Board supports businesses and economic activities that contribute to the wellbeing of the area in a sustainable and environmentally sound manner consistent with the principles of the Resource Management Act 1991.

Seafood: A few small fishing boats operate out of Karitāne. Cockles are harvested on an increasing scale for export in Blueskin Bay by Southern Clams Ltd.

Forestry: The large pine plantation along the Waikouaiti foreshore was harvested in 2017 and is being replaced by an indigenous forest. There are smaller privately owned plantations of natives, eucalypts, pines and other exotics throughout the area. There is also a large commercial forest in the Silver Peaks owned by City Forests Limited, a subsidiary of Dunedin City Holdings Limited

Farming: Sheep and cattle predominate with properties ranging from large tussock runs to small 2-to-15-hectare lifestyle blocks. Dairying is centred around the Waikouaiti River flats and Church Road.

In recent years, a programme of diversifying the commercial crops grown in the south has been facilitated and nurtured by the Council. The Board is very supportive of the DCC Economic Development Unit's role in continuing to assist with initiatives such as the Topo Climate project.

Tourism: is growing in the area, and some small businesses have recently evolved to meet tourists' needs for refreshments and other activities. Eco-Tourism developments include ocean wildlife tours by kayak or catamaran and the Orokonui Ecosanctuary. As well as the more traditional campgrounds, there are now bed & breakfasts, homestays, motels/hotels and rental holiday homes.

Industrial Developments: Mainland Poultry, close to Waikouaiti, is one of the largest egg-producing suppliers in Australasia. Oceana Gold's gold mine at Macraes Flat is a vast project and, while being slightly outside the Board's geographical area, utilises Waikouaiti and nearby Palmerston as service centres.

Retail: There is a surprisingly wide range of small retail outlets in the area. They include cafes, pubs, dairies/grocery stores, bakery, hardware store, second-hand stores and clothing design and art gallery. Fuel is available at Karitāne Store and at Waikouaiti.

Service Industries: serving the rural sector are mainly concentrated in Waikouaiti, but with some at Evansdale and Waitati, and include engineering/manufacturing plants, garages, transport companies, agricultural contractors, veterinary services, real estate agents, arborists, builders, plumbers, electricians etc.

Horticulture: includes the long-established commercial and retail Blueskin Nursery in Waitati and market gardens near Waikouaiti as well as more recent developments in small scale organic production, flowers and native plant seedlings.

Recreation: There are many opportunities for recreation in the Waikouaiti Coast area. Some of the beaches are safe for swimming and surfing, and many residents and visitors from Dunedin also visit to walk along these beaches and in the Council's Recreational Reserves. Boating, fishing and cycling are also very popular activities.

Volunteer and Community Groups: Updated as necessary

Blueskin A&P Society
Blueskin Bay Garden Club
Blueskin Bay Watch
Blueskin Media
East Otago Arts Group
East Otago Blokes Shed
East Otago Catchment Group
East Otago Events Centre Committee
East Otago Health Trust
East Otago Swimming Club
East Otago Taiapure
East Otago Youth Worker Trust
East Otago Relief Network Trust
Eastern Rugby Club
Green Hut Track Group
Karitāne Fishing Club
Karitāne Hall Committee
Karitāne Lawn Bowls Club
Moana Gow Pool Committee
One Coast Resource Recovery Centre in Waikouaiti
Presbyterian Support Otago
POWA Committee
Waikouaiti Amateur Music and Drama Society Inc.
Waikouaiti District Museum
Waikouaiti Volunteer Fire Brigade
Waikouaiti Garden Club
Waikouaiti Golf Club
Waikouaiti Lawn Bowls Club
Waikouaiti Petanque
Waikouaiti Playcentre
Waikouaiti Pony Club
Waikouaiti Riding for the Disabled
Waikouaiti Senior Citizens' Club
Waikouaiti Spinners and Weavers
Waikouaiti Tai Chi
Waikouaiti Returned Servicemen's Association
Waikouaiti Tennis Club
Waikouaiti, Warrington, & Karitāne Indoor Bowls Clubs
Waiputai Trust (Waiputai Recreational Hub in Warrington)
Waitati Beach Reserve Society
Waitati Music Festival
Waitati Volunteer Fire Brigade
Waitati Militia
Waitati Hall Committee
Waitati Warblers
Warrington Hall Committee
Warrington Orchestra
Warrington Surf Life Saving Club

Festivals and Events

Local events, which not only provide entertainment for locals and visitors, but add to the vitality and economic success of the area occur throughout the year. These include Karitāne Fishing Competition, Karitāne Surfing Competition, Warrington Surf Lifesaving competitions, Blueskin A & P Show, Waitati Music Festival and Waikouaiti Rodeo to name but a few. Tours and markets are organised by the Blueskin Bay Garden Club.

Summary

In the Waikouaiti Coast area there is an interaction of differing values, as urban meets with rural, permanent residents living alongside holidaymakers. Core services are limited in the townships. Among these communities there is a general feeling of optimism for the future of this unique and picturesque part of the city.

The Waikouaiti Coast Community Board intends to be proactive in retaining and enhancing essential services which support the infrastructure of the community. Because of the diversity of people's ability to pay, this Board is committed to obtaining the best value for money for its residents. Also, we are committed to developing activities that contribute to the well-being of the community, animal welfare, sustainable development, maintaining and improving biodiversity.

COMMUNITY SERVICE CONTACT INFORMATION:

Council Services	
Dunedin City Council	477 4000
Waikouaiti Library, SH1, Waikouaiti	474 3690
Blueskin Bay Library, Harvey Street, Waitati	474 3690
Education	
Blueskin Playcentre, Waitati	(027) 229 3257
Waikouaiti Playcentre, McGregor Street, Waikouaiti	(027) 426 0415
Bigsteps Educare Early Childcare Centre, Waikouaiti	4657 319
Karitāne Primary School, Coast Road, RD 1, Karitāne	465 7475
Waikouaiti Primary School, Malloch Street, Waikouaiti	465 7225
Waitati School, Mt Cargill Road, RD 2, Waitati	482 2888
Warrington Primary School	482 2605
Medical	
Waikouaiti Medical Centre, Main Road, Waikouaiti	465 7599 or PL (03) 465 1444
Waikouaiti Veterinary Centre, Pratt Street, Waikouaiti	465 7613
Halls	
East Otago Events Centre	027 379 5983
Karitāne Hall	Ring the Dunedin City Council on 477 4000 for contact details
Waitati Hall	Ring the Dunedin City Council on 477 4000 for contact details
Warrington Hall	Ring the Dunedin City Council on 477 4000 for contact details
Marae	
Kati Huirapa Runaka Ki Puketeraki	465 7300
Public Transport	
Dunedin - Palmerston (Route 1) - operated by GoBus for Otago Regional Council	Timetable on ORC Website : orc.govt.nz