

Community Plan

2025/2026



APRIL 2025

Mosgiel Taieri Community Board

SECTION ONE	
Introduction	1
SECTION TWO: KEY INFORMATION	
2.1 Background	2
2.2 Board Members and their Contact Details	3
2.3 Map of Community Board Area	4
2.4 Our Community	4
SECTION THREE: PRIORITIES FOR OUR COMMUNITY	
3.1 Community Board Priorities	6
SECTION FOUR: COMMUNITY BOARD PROPOSED ACTIVITIES	10
SECTION FIVE: PLANS	
5.1 Emergency Plan – Community Board Response Plan	12
5.3 Community Engagement Plan	12
SECTION SIX: COMMUNITY BOARD MEETING SCHEDULE	13

1 INTRODUCTION

This Community Board Community Plan summarises the needs and priorities of the communities within the Mosgiel-Taieri Community Board area for the 2025/2026 , and the Dunedin City Council's (DCC) 2025-34 long term plan. Its primary objective is to signal to the DCC those priorities for our community, with the ultimate goal that they are programmed into the DCC's 9-year plan and funded by the DCC. These priorities are shown in section 3 of this plan.

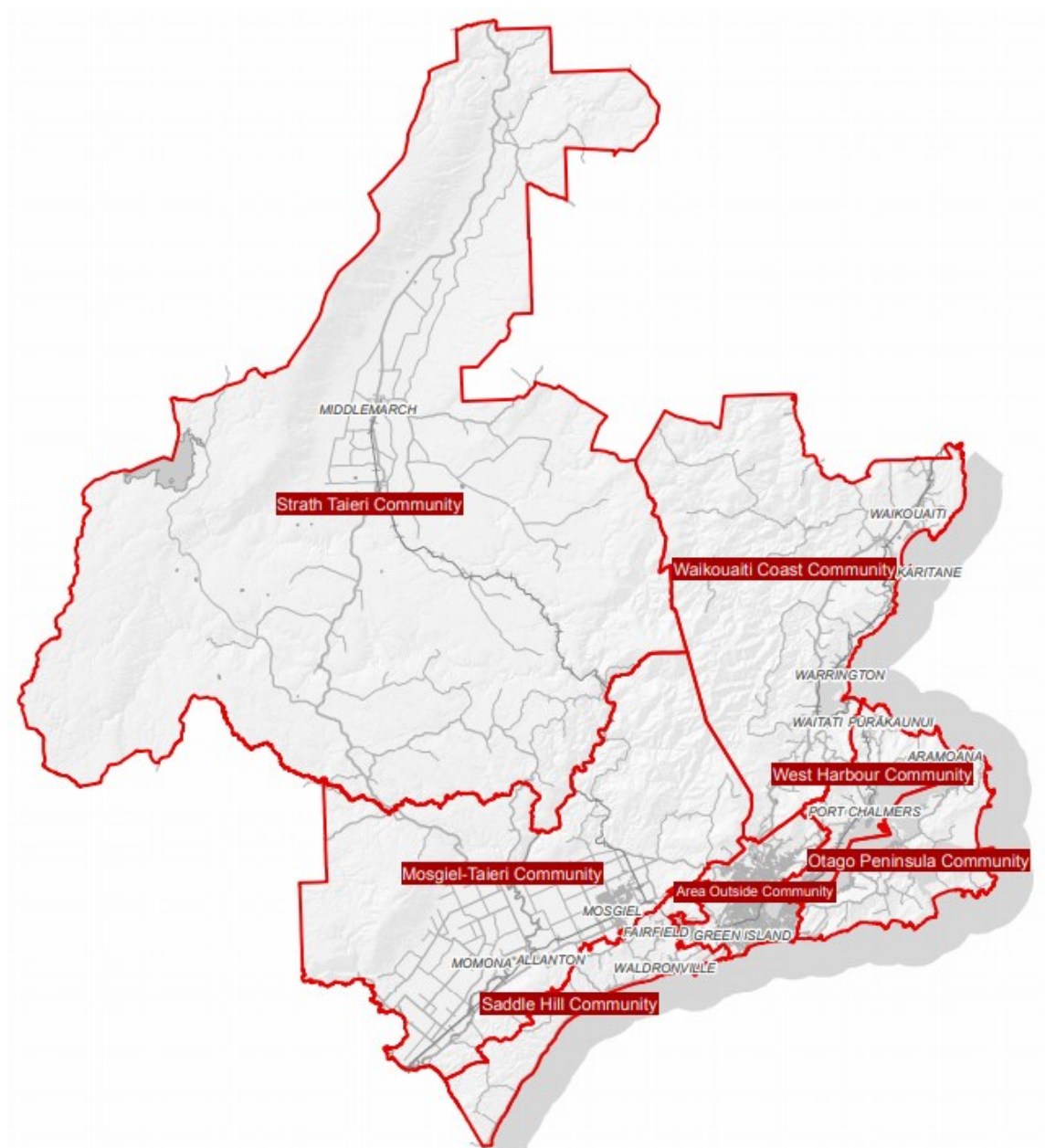
This Plan also includes activities that we, the Community Board plan to undertake. Our most important role is to be an advocate for our community, but we also proactively support our community in other ways, and these are set out in section 4 of this plan.

This Plan is subject to change and revision as needs arise and priorities alter.

2 KEY INFORMATION

2.1 BACKGROUND

The City of Dunedin has six Community Boards within its boundary, as shown in the map below.



Each Community Board has six elected members, and one councillor representative. The Community Board members are elected every three years as part of the local body elections. Community Boards must comply with the same rules and regulations as council, such as the Local Government Act.

The primary role of a Community Board is one of advocacy for its community. Each Community Board makes representations to the DCC on the priorities those boards have identified for their community area, that they would like to see included and funded in the council's annual plans and 10 year plans.

Any matters of an operational nature, e.g., the reporting of potholes, tree issues etc., are reported to council via the DCC's 477 4000 phone number, and do not form part of the Community Board's priorities.

Each Community Board holds public meetings approximately every 2 months, and these meetings are advertised on the DCC website and in the Otago Daily Times. The meeting schedule for the 2023 calendar year is provided in Section 6 of this plan. The agendas and minutes from those meetings are also available on the DCC website at <https://www.dunedin.govt.nz/council/council-meetings/agendas-and-minutes>

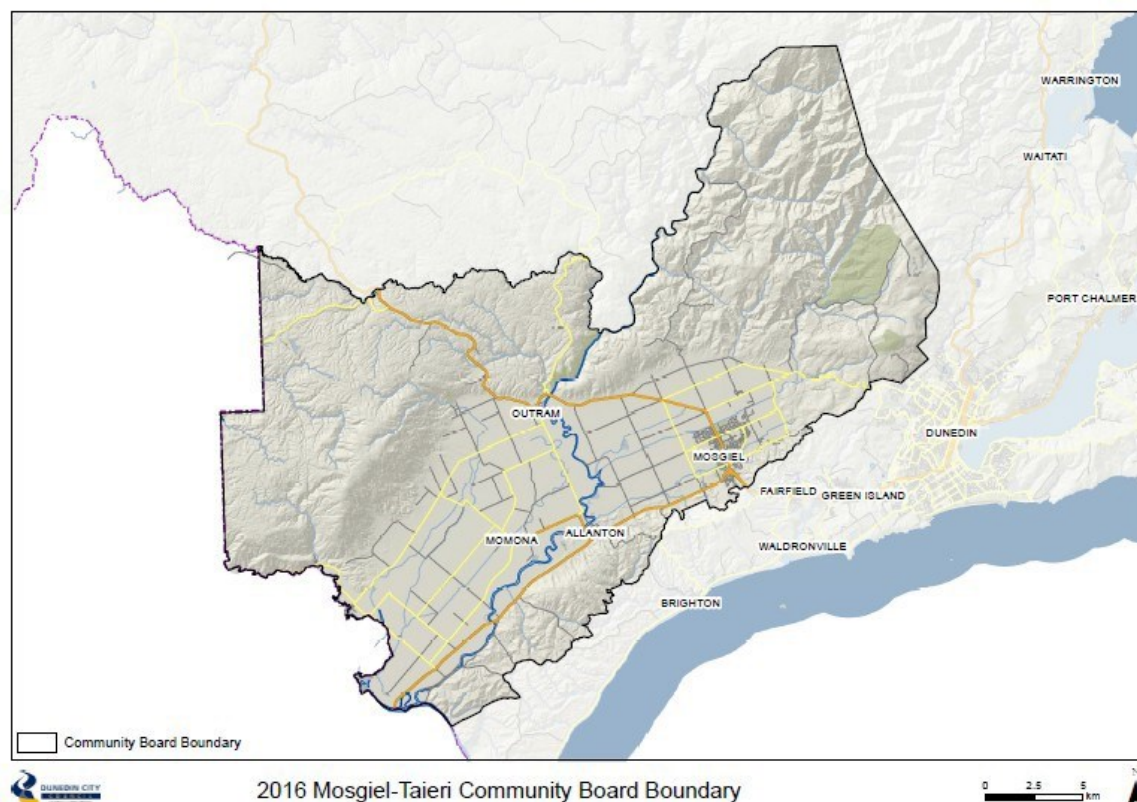
At the start of each meeting, there is a public forum session, which gives anyone from the community the opportunity to present to the board members their views on any topic. Anyone wishing to speak at public forum must make a request to speak at least 24 hours before the day of the meeting. They can do this via the Chair of the Community Board or contact a Governance Support Officer at the DCC at governance.support@dcc.govt.nz.

2.2 BOARD MEMBERS AND CONTACT DETAILS

Board members for the 2025 – 2028 triennium are as follows:

Name	Cell phone	Email
Rebecca Shepherd (Chair)	03 477 4000	rebecca.shepherdMTCB@outlook.com
Andrew Sutton (Deputy Chair)	03 477 4000	andrew.house.sutton@gmail.com
Austen Banks	0274 370 727	abanks@xtra.co.nz
Rose Finnie	03 477 4000	rosefinnie13@gmail.com
Brian Peat	021 581 253	peat23@hotmail.com
Steve Wilson	021 123 4321	steve@aspiringadventures.com
Cr Cherry Lucas (Councillor representative)	021 972 133	cherry.lucas@dcc.govt.nz

2.3 MAP OF MOSGIEL-TAIERI COMMUNITY BOARD AREA



2.4 OUR COMMUNITY

- *Schools*
There are 7 schools in the Mosgiel-Taieri Community Board area:
Taieri College
East Taieri School
Elmgrove School
Silverstream Primary School
St Mary's School
Amana Christian School
Outram School
- *Geography*
The Taieri Plain is a low-lying, relatively flat expanse of land, located to the west of Dunedin City, covering an area of 21,000 hectares. Used for rural, residential, commercial and industrial activities, the Taieri Plain is home to approximately 20,000 people, mostly clustered in and around the urban areas of Mosgiel and Outram.

- *Hazards*

Much of the Taieri Plains is vulnerable to some level of risk associated with flooding. The effects of any given event will vary, however, depending on a range of factors, including antecedent conditions (such as soil moisture level and river flows), the location and magnitude of the rainfall event, the topography of the location, and the effectiveness of risk reduction measures including the lower Taieri Flood Protection Scheme and the East and West Taieri Drainage Schemes. The Taieri Plains may also be subject to other weather-related risks, earthquakes, and wildfire.

Section 3. Priorities for our Community

The Mosgiel Taieri Community Board has identified the following priorities for our community which we would like to see included in the Council's annual plan 2024/25 and long term plan 2025/2034. Our Community Plan is a living document that will be included on the agenda at each of our Community Board meetings to be amended and added to as required.

Priority 1. Gordon Road / SH87 Heavy Traffic By-Pass for Mosgiel

Time frame: 2025 to 2027 Feasibility Study.
2027 to 2030 Construction.

The need for a heavy transport by-pass for Mosgiel has been identified by the DCC for more than 20 years. The 2013 DCC Integrated Transport Strategy for Dunedin identified the need to separate the heavy transport using Gordon Road from the vulnerable population of Mosgiel characterised by school children and the elderly. The MTCB held a public meeting on this subject in 2023. This resulted in the DCC including the production of a feasibility study for a by-pass into their forward work plan and including this issue onto the Regional Land Transport Plan for the 2024/27 period. The Taieri remains the fastest growing region of Dunedin with continuing growth in housing and industrial activities. Currently there are an average of 540 heavy transport movements on Gordon Road every day, and this is set to continue growing with the growth and development of Mosgiel.

It is essential that the DCC, the MTCB and the whole community keep the focus on getting the feasibility study completed and for the physical work to commence.

The likelihood that a significant Inland Freight Hub will be fast tracked for North Taieri will deliver significant benefits for Dunedin and the whole region. This development will increase the urgency for a Heavy Transport By-Pass for Mosgiel.

This issue remains the Number One concern communicated to the MTCB at public engagement events, by far.

Priority 2. Cycleways / Walkways onto the Taieri and across the Taieri.

Time frame: 2025 to 2034 Funding and construction

The Mosgiel Taieri Community Board regards cycleways and walkways as essential to the future of our community and Dunedin City. Shared paths on the Taieri are important as a commuting option, recreational asset and tourist trail linking Dunedin to the thriving tourist market of Central Otago.

Very soon tourists will be able to ride off-road from Queenstown to Waihola where their journey will end. Bringing these high value, low carbon visitors through to Dunedin will provide measurable benefits for Dunedin's visitor economy.

Priorities for the MTCB are:

- Stage one of the Tunnel Trail from Mosgiel to Green Island (some work commenced) and then on to Dunedin.
- Stage one of the Taieri Trail from Mosgiel to Outram (feasibility study complete, ORC approval gained) and then on to Waihola.
- The Outram Loop Track from Outram to the Glen via the Historic Park. (community project, in construction)

Priority 3. Flood Protection for the Taieri.

Time frame: 2025 to 2027 Maintenance of all ORC flood protection assets.
2025 to 2027 Upgrade of DCC stormwater pumps and network.

Flood protection for the Taieri is a key concern for many residents on the Taieri. It has become apparent from various reports obtained or released by the ORC that the flood protection assets including flood banks and river channels will not perform as intended in the event of an adverse weather event. The prime concerns are the reduced capacity of the Silverstream as a result of this channel not being maintained, the integrity of the flood banks protecting Outram and the flood banks protecting the lower Taieri including Dunedin Airport. The MTCB will continue its efforts to have the ORC prioritise this work which will include informing the community on this matter. It is acknowledged that the ORC has commenced significant investigations and work towards this outcome. The formation by the ORC of a Lower Taieri Liaison Group and the inclusion of the MTCB with an appointed seat is appreciated.

The MTCB will continue to advocate for the upgrade of the stormwater network within Mosgiel to increase the ability for stormwater to be dealt with during times of heavy rainfall. This includes the planned upgrade of the stormwater pumps at Reid Avenue and Centre Street. It is acknowledged that the DCC has undertaken significant improvements already which appear to have paid dividends during recent heavy rain events.

Priority 4. Pedestrian and road safety for Mosgiel and Outram.

Time frame: 2024 to 2034 Implementation

The Mosgiel Taieri Community Board will advocate for improvements to footpaths and crossings throughout Mosgiel and Outram, along with other safety improvements. Immediate priorities include:

- New pedestrian crossings / courtesy crossings on Bush Road and Factory Road.
- New pedestrian crossing on SH87, Holyhead Street, Outram
- New footpath on Church Street Mosgiel outside St Mary's School.
- New footpath on Mountford Street, Outram.
- Removal of bollards obstructing path between Doon and Wickliffe Street.
- Removal of redundant build outs on Factory Road.
- Reduction of the speed limit on Gordon Road between Ayr Street and Tyne Street.
- Reduction of speed limit on Riccarton Road to 60 km/hr.
- Reduction of speed limit on Bush Road between Gladfield and existing 50 km/hr transition to 60 km/hr
- Reduction of the speed limit on Dukes Road between Gordon Road and Stedman Road to 60 km/hr.
- Relocating the transition from 50 km/hr to 100 km/hr further north of Outram to the other side of the Taieri River bridge.
- Introduction of a Barnes Dance at corner of Factory Road and Gordon Road.
- Upgrade Give Way to Stop signs on the Gordon Road / School Road intersection and the Gordon Road / Waiaronga Road intersection.
- Improve the pedestrian safety at the Gladstone / Gordon / Quarry intersection.
- Install a light on the Cavan Place walkway.

Priority 5. Memorial Park Destination Playground

Time frame: 2031 to 2034 Construction

The DCC has decided to establish three Destination Playgrounds for Dunedin, one of which is located within the Memorial Gardens, Mosgiel. A preliminary design has been released by the DCC for consultation. The preliminary design includes a significant skate park including a bowl and street skate area, along with other new play elements

for children and young adults. The MTCB supports the preliminary design and the inclusion of a skate facility for the Memorial Park Destination Playground.

The MTCB will work closely with the DCC and the community advocating for the design and construction of this upgrade as a matter of urgency.

Priority 6. The future of the Taieri Gorge Rail Corridor

Time frame: 2028 review.

The Mosgiel Taieri Community Board supports the best use of the Taieri Gorge Rail Corridor for the future.

Priority 7. Park and Ride Transport Hub.

Time Frame: 2025 to 2030 Implementation

The Mosgiel Taieri Community Board will advocate for the proposed Mosgiel Park and Ride facility to be built without delay. This facility is essential as many outlying communities such as Outram, Allanton and the Airport are not currently serviced by buses. This facility will give residents the option of driving to Mosgiel and then continuing their journey into Dunedin by bus and possibly train in the future.

Priority 10. Economic Growth on the Taieri

Time frame: 2025 to 2034

The Mosgiel Taieri Community Board notes the recent rapid uptake of industrial land around Dukes Road North bringing new industries and new employment opportunities to our area. There is now a shortage of large industrial lots which is restricting future opportunities.

The Board supports the further rezoning of land around Dukes Road North to Industrial to provide for the continued growth of new businesses for the benefit of all Dunedin. This area has numerous advantages over other sites being considered for industrial development in Dunedin:

- The area is flat, and construction is easy,
- The area is served by a rail head linking it directly to Port Otago.
- Providing the ORC maintains the Mill Creek diversion, the area is not prone to flooding and new builds can be regulated to mitigate flood interruption.
- The area is close to a major population base.
- The area is largely unproductive currently.

The Board recommends that the 15-hectare lot on Dukes Road North, owned by the DCC and already zoned industrial is released to the market without delay.

In the longer-term areas south and north of the existing Industrial area should be considered for rezoning, particularly the area north from Gordon Road and the existing Industrial developments along with the area in proximity of the rail head.

The establishment of a heavy transport by-pass linking this area to SH1 remains vital for the efficiency of transportation and the well-being of the community.

Priority 11. Residential Growth on the Taieri

Time frame: 2025 to 2034

While there is anxiety over the loss of traditional ¼ acre sections within inner Mosgiel, the community understands that in-fill housing developments are favoured by the council and appear to be favoured by buyers including first home buyers and downsizers.

The Board supports continued in-fill housing developments with the following recommendations:

- Restricted to inner-Mosgiel, close to amenities, green space and public transport.
- With urgency the DCC must improve the protection of special character homes and buildings with either special character zones or by updating its register of heritage buildings, or both. Mosgiel has several special character buildings within the in-fill zone which are not protected.
- Significant trees should be protected other than for the factors already identified by council.

The Taieri needs more quality housing to attract new families to our area from within Dunedin, within New Zealand, New Zealanders returning to Aotearoa, and new immigrants. A family of four moving to Dunedin adds to the prosperity of our city and contributes millions to the economy over several generations.

The Board supports careful development of quality subdivisions around Mosgiel and Outram with the following recommendations:

- All new developments must be away from areas that are likely to be flooded by the Taieri, Silverstream, Owhiro or Mill Creek.
- This favours the greenfield area currently semi-developed around Wingatui and some elevated sites. This area is largely unproductive at present with lot sizes that are uneconomic.
- In the longer term, elevated areas of East and West Taieri should be considered for future development.
- Infrastructure must be upgraded ahead of future demand, particularly stormwater drainage.

Section 4. Community Board Activities

The Mosgiel Taieri Community Board has identified the following activities that the Community Board will deliver to our community throughout the year. These activities will be undertaken and funded by the Community Board.

Activity 1. Community Engagement Plan.

The MTCB will engage with the constituents, service groups, business and organisations throughout the Mosgiel Taieri community to impart information that may be important to them, and to seek feedback on issues that concern the Board and the councils. This will be achieved by various initiatives, including:

- Engagement via Social Media channels.
- Printed MTCB newsletters and brochures.
- Distribution of supplied material from councils and agencies.
- Public meetings.
- Participation in meetings arranged by both councils.
- Participation in the Otago Taieri A and P show.
- Participation in the Party in the Park community event.

Activity 2. Community Response Plan.

The DCC and the MTCB has a statutory role under the Civil Defence Emergency Management Act to respond in the event of a civil emergency occurring within our community. The Mosgiel Taieri Community Board has a responsibility to interface between the DCC, the Mosgiel Taieri Community Response Group and Otago Civil Defence Emergency Management.

The MTCB will continue to support the MTCRG to produce and manage an effective Community Response Plan for all Taieri communities.

Activity 3. Liaison with the Taieri Network.

The MTCB will liaise closely with the DCC funded place-based group, The Taieri Network on matters of community interest and community benefit. The principal objective will be to ensure that both entities work together to deliver the best outcome for our community and the DCC.

Activity 4. Coronation Hall Trust.

The MTCB will continue to have input into the Coronation Hall to ensure that this community facility is being used appropriately and with benefit to the community.

Activity 5. Taieri Trails Group.

The MTCB will participate on the Taieri Trails Group to establish an off-road cycling and walking trail between Mosgiel and Outram, and then between Outram and Waiholā.

Activity 6. Lower Taieri Liaison Group

The MTCB has an appointment to the ORC's Lower Taieri Liaison Group which has been set up to provide liaison between the ORC and landowners affected by the operation of the Lower Taieri Flood Protection and Drainage schemes.

Section 5. Plans

The Mosgiel Taieri Community Board has plans to support its activities and requirements. These plans are set out below.

5.1 Civil Defence Emergency Management Community Response Plan

In conjunction with the Mosgiel Taieri Community Response Group, the Mosgiel Taieri Community Board has contributed to the development of a Community Response Plan for the Taieri community.

This is an extensive plan which will be used in the event of a Civil Defence Emergency including flooding, earthquake, and wildfire.

This plan can be viewed at [https:// xxx](https://xxx)

5.2 Community Engagement Plan

Members of the community are invited to make a comment on the Mosgiel Taieri Community Board Community Plan at any time. You may have a view on the Board's priorities and actions. You may want to ask the Board to assist with an issue involving the DCC or the ORC. You are encouraged to have input into the Community Plan and work of the Mosgiel Taieri Community Board.

There are many ways that members of the community can do this:

- Verbally by contacting a board member directly using the contact details provided.
- Write to the board at the address below.
- In person at community events, public meetings or by presenting at the Public Forum section of a scheduled Board meeting.

Please send written communication to:

The Chairperson
Mosgiel Taieri Community Board
c/o Dunedin City Council
P O Box 5045
Dunedin 9058

Or by email to Rebecca.ShepherdMTCB@outlook.com or governance.support@dcc.govt.nz

Section 6. Community Board Meeting Schedule 2025

The Mosgiel Taieri Community Board meets regularly. Unless otherwise notified all Board meetings are held at the Downes Room, Mosgiel Public Library, Hartsonge Avenue, Mosgiel commencing at 5:30PM.

Confirmed Meeting Dates for 2025:

- **Wednesday, 5 February**
 - **Wednesday, 2 April**
 - **Wednesday, 21 May**
 - **Wednesday, 6 August**
 - **Wednesday, 10 September**
- **Wednesday, 5 November (Inaugural meeting following local elections)**
 - **Wednesday, 26 November**