

Community Plan

2026/2027



JUNE 2026

Mosgiel Taieri Community Board

SECTION ONE	
Introduction	1
SECTION TWO: KEY INFORMATION	
2.1 Background	2
2.2 Board Members and their Contact Details	3
2.3 Map of Community Board Area	4
2.4 Our Community	4
SECTION THREE: PRIORITIES FOR OUR COMMUNITY	
3.1 Community Board Priorities	6
SECTION FOUR: COMMUNITY BOARD PROPOSED ACTIVITIES	12
SECTION FIVE: PLANS	
5.1 Civil Defence Emergency Management–Community Response Plan	14
5.2 Community Engagement Plan	14
SECTION SIX: COMMUNITY BOARD MEETING SCHEDULE	15

1 INTRODUCTION

This Community Board Community Plan summarises the needs and priorities of the communities within the Mosgiel-Taieri Community Board area for the 2025/2026, and the Dunedin City Council's (DCC) 2025-34 long term plan. Its primary objective is to signal to the DCC those priorities for our community, with the ultimate goal that they are programmed into the DCC's 9-year plan and funded by the DCC. These priorities are shown in section 3 of this plan.

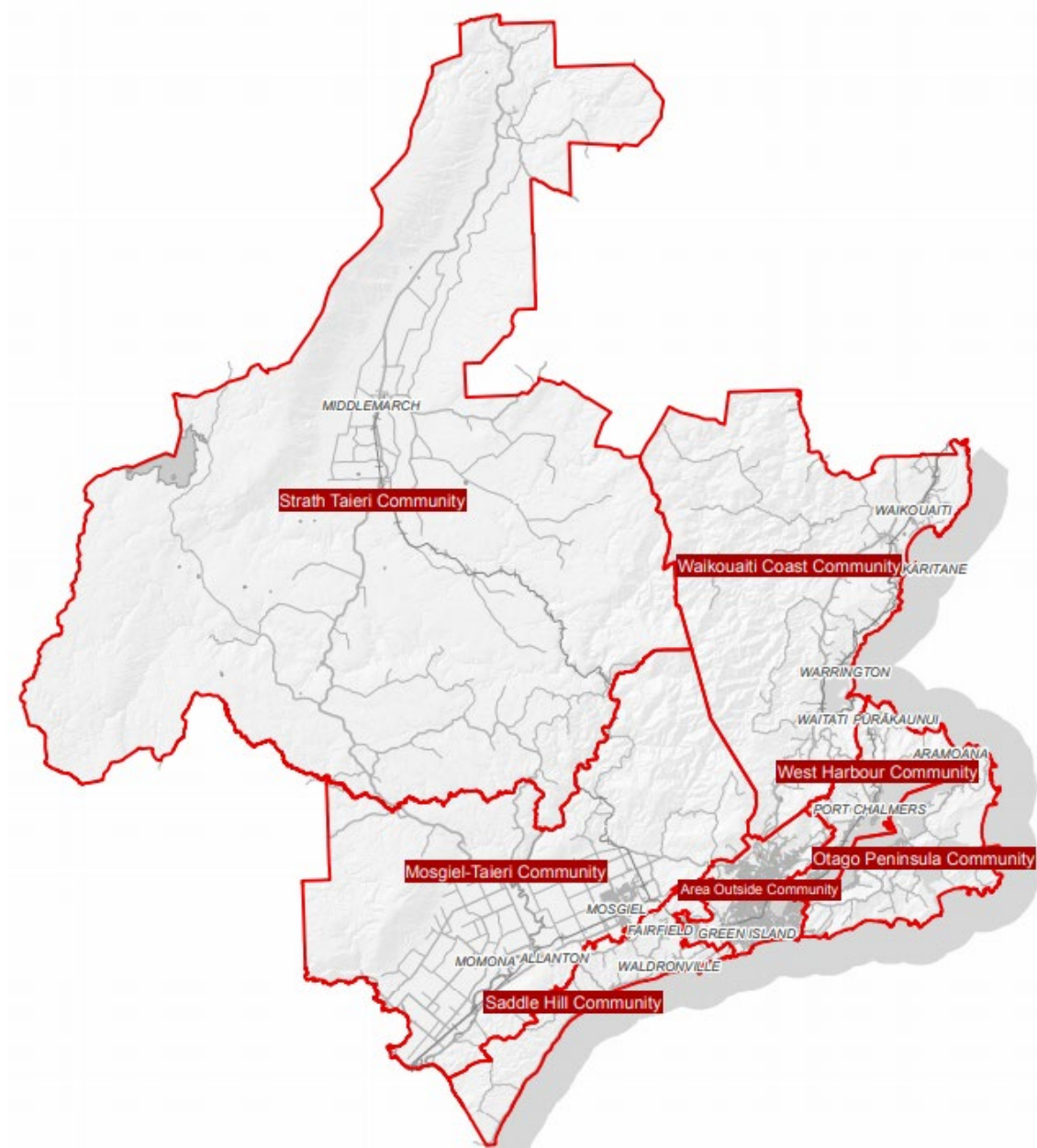
This Plan also includes activities that we, the Community Board plan to undertake. Our most important role is to be an advocate for our community, but we also proactively support our community in other ways, and these are set out in section 4 of this plan.

This Plan is subject to change and revision as needs arise and priorities alter.

2 KEY INFORMATION

2.1 BACKGROUND

The City of Dunedin has six Community Boards within its boundary, as shown in the map below.



Each Community Board has six elected members, and one councillor representative. The Community Board members are elected every three years as part of the local body elections. Community Boards must comply with the same rules and regulations as council, such as the Local Government Act.

The primary role of a Community Board is one of advocacy for its community. Each Community Board makes representations to the DCC on the priorities those boards have identified for their community area, that they would like to see included and funded in the council’s annual plans and 10 year plans.

Any matters of an operational nature, e.g., the reporting of potholes, tree issues etc., are reported to council via the DCC’s 477 4000 phone number, and do not form part of the Community Board’s priorities.

Each Community Board holds public meetings approximately every 2 months, and these meetings are advertised on the DCC website and in the Otago Daily Times. The meeting schedule for the 2023 calendar year is provided in Section 6 of this plan. The agendas and minutes from those meetings are also available on the DCC website at <https://www.dunedin.govt.nz/council/council-meetings/agendas-and-minutes>

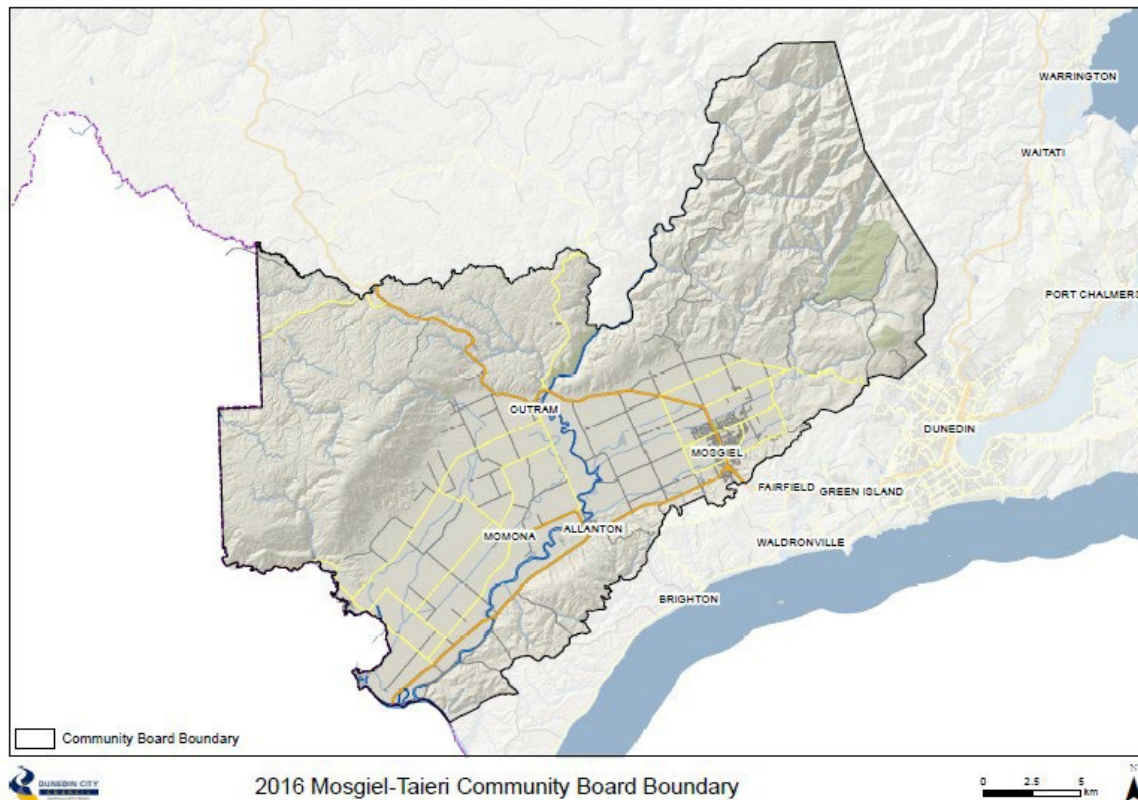
At the start of each meeting, there is a public forum session, which gives anyone from the community the opportunity to present to the board members their views on any topic. Anyone wishing to speak at public forum must make a request to speak at least 24 hours before the day of the meeting. They can do this via the Chair of the Community Board or contact a Governance Support Officer at the DCC at governance.support@dcc.govt.nz.

2.2 BOARD MEMBERS AND CONTACT DETAILS

Board members for the 2025 – 2028 triennium are as follows:

Name	Cell phone	Email
Rebecca Shepherd (Chair)	021 234 5297	rebecca.shepherdMTCB@outlook.com
Andrew Sutton (Deputy Chair)	027 475 2742	andrew.house.sutton@gmail.com
Austen Banks	0274 370 727	abanks@xtra.co.nz
Rose Finnie		rosefinnie13@gmail.com
Brian Peat	021 581 253	peat23@hotmail.com
Steve Wilson	021 123 4321	steve@aspiringadventures.com
Cr Cherry Lucas (Councillor representative)	021 972 133	cherry.lucas@dcc.govt.nz

2.3 MAP OF MOSGIEL-TAIERI COMMUNITY BOARD AREA



2.4 OUR COMMUNITY

- *Schools*
There are 7 schools in the Mosgiel-Taieri Community Board area:
Taieri College
East Taieri School
Elmgrove School
Silverstream Primary School
St Mary's School
Amana Christian School
Outram School
- *Geography*
The Taieri Plain is a low-lying, relatively flat expanse of land, located to the west of Dunedin City, covering an area of 21,000 hectares. Used for rural, residential, commercial and industrial activities, the Taieri Plain is home to approximately 20,000 people, mostly clustered in and around the urban areas of Mosgiel and Outram.

- *Hazards*

Much of the Taieri Plains is vulnerable to some level of risk associated with flooding. The effects of any given event will vary, however, depending on a range of factors, including antecedent conditions (such as soil moisture level and river flows), the location and magnitude of the rainfall event, the typography of the location, and the effectiveness of risk reduction measures including the lower Taieri Flood Protection Scheme and the East and West Taieri Drainage Schemes. The Taieri Plains may also be subject to other weather-related risks, earthquakes, and wildfire.

Section 3. Priorities for our Community

The Mosgiel Taieri Community Board has identified the following priorities for our community which we would like to see included in the Council's annual plan 2024/25 and long term plan 2025/2034. Our Community Plan is a living document that will be included on the agenda at each of our Community Board meetings to be amended and added to as required.

Priority 1. Address traffic flow issues and reduce heavy traffic along Gordon Road / SH87 in Mosgiel Town Centre

Time frame: 2025 to 2027 Feasibility Study
2027 to 2030 Construction

Current traffic volumes already exceed the intended capacity of local roads. With new residential subdivisions, the construction of further retirement village accommodation, the development of a freight hub on Dukes Road North, and anticipated industrial expansion in this area, traffic pressures are expected to intensify further. Although the Freight Hub/Inland Port development will be implemented in stages over time, it will ultimately result in increased heavy vehicle movements and heighten the need for a dedicated Heavy Transport By-Pass for Mosgiel. It is therefore imperative that infrastructure planning and implementation proceed proactively to preserve the community's quality of life.

The requirement for a heavy transport by-pass has been recognised by the Dunedin City Council (DCC) for over two decades. The 2013 DCC Integrated Transport Strategy specifically identified the need to separate heavy transport traffic from Gordon Road to protect Mosgiel's vulnerable population. The primary objective of the community is to alleviate traffic congestion on SH87 through Mosgiel by strategically developing alternative access routes from SH1 into Mosgiel. This initiative aims to facilitate the establishment of a Heavy Traffic By-Pass.

Mosgiel's demographic profile includes a significant proportion of older residents, coupled with an influx of new families relocating to the Taieri region. This trend increases the demand for infrastructure that ensures the safety of seniors, individuals with disabilities, and children who rely on local roads and footpaths.

It is essential that the DCC, the Mosgiel-Taieri Community Board (MTCB), and the broader community maintain their commitment to delivering timely and appropriate infrastructure to support Mosgiel's ongoing residential and economic growth, thereby mitigating potential negative social impacts. Notably, this matter remains the predominant concern raised by the public at MTCB engagement events.

Priority 2. Flood Protection and Emergency Response for the Taieri

Time frame: 2026 to 2028 Maintenance of all ORC flood protection assets
2026 to 2028 Upgrade of DCC stormwater pumps and network

Flood protection is a key concern for many Taieri residents. Reports released by the Otago Regional Council indicate that flood protection assets, including flood banks and river channels may not perform as (ORC) intended during a significant weather event.

The ORC's establishment of a Lower Taieri Liaison Group, including an appointed MTCB seat, is welcomed.

The Silverstream's reduced capacity due to a lack of channel maintenance has long been a major concern and has driven calls to widen the channel to carry greater flows. The ORC has now begun this work, and it is being managed in phases, starting at the southern end of the Silverstream. Work through to Riccarton Road is now complete. Phase 3 (Riccarton Road to Gordon Road) is scheduled for construction in spring 2026 and is expected to be similar in scope to earlier phases. Phase 4 will follow and extend upstream to Wingatui Road.

The condition of the flood banks protecting Outram and the Lower Taieri, including Dunedin Airport, has previously been raised as requiring remediation. However, Safety and Resilience Committee work in February 2024 found the flood banks' integrity to be satisfactory, and this remediation is no longer required.

The MTCB will continue to advocate for upgrades to Mosgiel's stormwater network to improve performance during heavy rainfall. The DCC has already delivered significant improvements, which appear to have reduced impacts during recent heavy rain events. The MTCB will seek confirmation that the stormwater pump upgrades at Reid Avenue and Centre Street are complete and will operate at an appropriate capacity during heavier rainfall. Stormwater planning is underway for the proposed residential development at Wals, and the MTCB will continue to advocate for appropriate protection and integration with the DCC stormwater system. The Otago Regional Council is working with the developer to ensure any impacts are managed within existing infrastructure and the MTCB will advocate for residents on this.

Disproportionate rating for flood mitigation across the Taieri has been a significant concern for Outram residents, in particular. ORC is undergoing a review of the Rating structure and will begin consultation on a new approach shortly. The MTCB will advocate for equitable spread of the flood mitigation costs for Taieri residents and assist the ORC with communication regarding the consultation process around the proposed rating system when this is available.

The MTCB is actively involved with the creation of a resilience plan specifically for Outram. This resilience plan will sit under the overall plan for the Taieri area but will be developed by local residents working with Emergency Management Otago. Activating resilience plans for the Taieri is a key MTCB function.

Priority 3. Pedestrian and Road Safety for Mosgiel and Outram

Time frame: 2026 to 2034 Implementation

The Mosgiel Taieri Community Board will advocate for improvements to footpaths and crossings throughout Mosgiel and Outram, along with other safety improvements. Increased walking and cycling throughout Mosgiel could significantly reduce car travel and hence relieve congestion but links are incomplete and crossings are unsafe, particularly for vulnerable members of the community.

The immediate priorities include:

- Urgent review of the light phasing at the SH87/Gordon Road intersection with Bush and Factory Roads to facilitate right turning phasing of the lights out of bush and Factory Roads onto Gordon Road. This intersection has high traffic volumes with buildup of traffic along Factory Road and Bush Road trying to turn across traffic on SH87. This is further complicated by the pedestrian phasing of the lights, meaning pedestrians are crossing on the same phase as the traffic is trying to find a break to turn right, which leads to frustration and dangerous interactions between pedestrians and turning traffic. With the residential developments planned at Wals, the traffic volumes coming from Bush Road will increase, with the bulk of this traffic likely to be turning right onto Gordon Road so this needs to be addressed urgently.
- Urgent placement of new pedestrian crossings on Bush Road and Factory Road – there are no controlled crossings along this busy 3km stretch, aside from the Gordon Road lights. This seriously impacts safe pedestrian access to bus services, the Mosgiel Pool and Library and the town centre, and all the schools,

particularly for vulnerable users (elderly, disabled and for school children) trying to access these services from the highly populated residential areas on the other side of this stretch of road.

- Support for the NZTA initiatives to reduce the queue at the SH1 offramp to Mosgiel.
- Support for the DCC Ōtepoti Pathways initiative for Pathways and Cycleways linking green spaces throughout Mosgiel to allow safe cycle and footpath routes across town. This will require new pedestrian crossings in Factory and Bush Road to link green spaces from that end of town. MTCB will continue to advocate for improved safety of walking/cycling routes for school access and other non-vehicle transport options for residents to access commercial and recreational amenities.
- Continue the work to align the variable speed zones across all Taieri Schools so that signage and crossings are updated and uniform in their message.
- New footpath on Mountford Street, Outram.
- Removal of redundant build outs on Factory Road.
- Relocating the transition from 50 km/hr to 100 km/hr to the Mosgiel side of the Taieri River Bridge.
- Replace 'Give Way' signs with 'Stop' signs on the Gordon Road/School Road intersection and the Wairongoa Road/School Road intersection. School Road is increasingly being used by West Taieri commuters to town and these Give Way intersections have become very dangerous, with several fatalities already, and urgently need to be converted to complete Stop signs for Gordon and Wairongoa traffic.
- Improve the pedestrian safety at the Gladstone / Gordon / Quarry intersection.
- Completion of the DCC car park off Gladstone Road north for people doing the tunnel – danger to pedestrians, cyclists and cars with parked cars on road leaving nowhere to walk. Pedestrians, particularly children with bikes and people with dogs, are at risk as they need to walk on the road. There is also frustration from homeowners along this stretch of road with driveways being blocked and used for turning.
- Speed control measures for Murray Street, Mosgiel. This street is well known for speeding so traffic slowing measures are likely to be needed. Parking is also an issue on this street with weekend sport in the adjacent Peter Johnstone Park increasing pedestrian safety risks.

Priority 4. Cycleways / Walkways

Time frame: 2026 to 2034 Funding and construction

The Mosgiel Taieri Community Board regards cycleways and walkways as essential to the future of our community and Dunedin City. Shared paths on the Taieri are important as a commuting option, recreational asset and tourist trail linking Dunedin to the thriving tourist market of Central Otago.

From September 2026 tourists will be able to ride off-road from Queenstown to Waihola where the trail, and therefore their journey, ends. Bringing these high value, low carbon visitors through to Dunedin will provide measurable benefits for Dunedin's visitor economy.

Priorities for the MTCB are:

- Tunnel Trail: Celebrate and promote completion of Stage 1; Support build of Stages 2 and 3; and lobby for progression of Stages 4 and 5, enabling completion of the trail to Caversham.
- Taieri Trail: Support build of Section 1 (Mosgiel to Outram). Provide support to Dunedin Tracks Network Trust, who are developing a business case for central Government funding to link Mosgiel to Waihola, and a regional plan to link A20 to Dunedin and onto Clutha Gold.
- The Outram Loop Track from Outram to the Glen via the Historic Park (community project, in construction).

Priority 5. Recreation Plan

Time frame: 2026 to 2034

MTCB will continue to advocate for maintenance of current recreation equipment and playgrounds and ongoing improvements to playgrounds around the Taieri, as required.

MTCB will continue to advocate for improved maintenance of the grounds at the BMX track and adjacent sealed pump track at Seddon Park in Wickliffe Street Mosgiel. The DCC sets operational rules and hours, and closes the track in wet conditions to protect the limestone base; these rules are supported by the MTCB.

MTCB supports the DCC Ōtepoti Pathways initiative for Pathways and Cycleways linking green spaces throughout Mosgiel to allow safe cycle and footpath routes across town. This will require new pedestrian crossings in Factory and Bush Roads to link green spaces from that end of town. MTCB will continue to advocate for improved safety of walking/cycling routes for school access and other non-vehicle transport options for residents to access commercial and recreational amenities.

The DCC aims to establish three Destination Playgrounds for Dunedin, one of which will be located within the Memorial Gardens, Mosgiel. A preliminary design has been released by the DCC for consultation. The preliminary design includes a significant skate park including a bowl and street skate area, along with other new play elements for children and young adults. The

MTCB supports the preliminary design and the inclusion of a skate facility for the Memorial Park Destination Playground. The MTCB will work closely with the DCC and the community advocating for the design and construction of this upgrade. The time frame for the construction of this destination playground is anticipated to be 2031-2034.

Priority 6. Taieri Gorge Rail Corridor

Time frame: 2028 review

Dunedin Railways Ltd is developing a strategic plan to rebuild its rail tourism business, leveraging its heritage and brand identity to foster community engagement and economic growth. The Mosgiel Taieri Community Board supports the decision to extend the Taieri Gorge Train Excursion for a limited period to allow investigation of practical options to preserve the Taieri Gorge rail service. The service is an iconic attraction with potential to appeal to both visitors and local residents.

MTCB supports:

- ongoing work by Dunedin Railways Ltd to make the Taieri Gorge train service commercially viable, and
- assessment of credible options to protect and sustain this iconic railway for the future.

Priority 7. Park and Ride Transport Hub

Time Frame: 2026 to 2030 Implementation

The Mosgiel Taieri Community Board will advocate for the Mosgiel Park and Ride facility to be built without delay. Some surfacing issues held up construction in late 2025 and early-2026 and MTCB has sought reassurance from DCC that construction will resume within in the 2026-27 financial year. This facility is essential as many outlying communities such as Outram, Allanton and the Airport are not currently serviced by buses. This facility will give residents the option of driving to Mosgiel and then continuing their journey into Dunedin by bus and possibly train in the future.

Priority 8. Economic Growth on the Taieri

Time frame: 2026 to 2034

Transport infrastructure constraints

The MTCB recognises that inadequate roading infrastructure through central Mosgiel will become a significant barrier to further development if it is not addressed. Congestion and heavy traffic on SH87/Gordon Road are already affecting safety and quality of life, and these pressures may in time undermine planned growth if people begin to move away. MTCB will continue advocating for alternative access points to divert a share of private vehicles and heavy traffic away from the main street. Allowing further commercial and residential development without corresponding investment in roading infrastructure would be short-sighted.

Industrial land demand

The Mosgiel Taieri Community Board notes the rapid uptake of industrial land around Dukes Road North, which is bringing new industries and employment opportunities to the area. However, the current shortage of large industrial lots is now limiting future growth opportunities.

Rezoning and supporting infrastructure

While MTCB supports further rezoning of land around Dukes Road North for industrial use to enable continued business growth for the benefit of wider Dunedin, this should be contingent on a firm commitment to the roading infrastructure needed to support that growth. The area offers several advantages over other potential industrial development sites in Dunedin:

- The area is flat, and construction is easy.
- The area is served by a rail head linking it directly to Port Otago.
- Providing the ORC maintains the Mill Creek diversion, the area is not prone to flooding and new builds can be regulated to mitigate flood interruption.
- The area is close to a major population base.
- The area is largely unproductive currently.

Longer-term land supply

In the longer term, areas to the south and north of the existing industrial land should be considered for rezoning. While the MTCB supports that the 15-hectare lot on Dukes Road North, owned by DCC and already zoned for industrial use, be released to the market, this must be contingent on adequate roading infrastructure to support this further development.

Strategic transport priority

The establishment of a heavy transport bypass linking this area to SH1 remains essential for transport efficiency and for protecting the well-being of the community.

Priority 9. Residential Growth on the Taieri

Time frame: 2026 to 2034

The MTCB recognises that inadequate roading infrastructure through central Mosgiel will become a significant barrier to further development if it is not addressed. Congestion and heavy traffic on SH87/Gordon Road are already affecting safety and quality of life, and these pressures may in time undermine planned growth if people stop moving into the area or begin to move away.

The Taieri needs more quality housing to attract new families to our area from within Dunedin and other parts of New Zealand, New Zealanders returning to Aotearoa, and new immigrants. A family of four moving to Dunedin adds to the prosperity of our city and contributes millions to the economy over several generations.

The Board supports careful development of quality subdivisions around Mosgiel and Outram with the following recommendations:

- All new developments must be away from areas that are likely to be flooded by the Taieri, Silverstream, Owhiro or Mill Creek.
- Infrastructure must be upgraded ahead of future demand, particularly stormwater drainage.
- Investments in roading infrastructure will be necessary to support a greater population.

While there is anxiety over the loss of traditional ¼ acre sections within inner Mosgiel, the community understands that in-fill housing developments are favoured by the council and appear to be favoured by buyers including first home buyers and downsizers.

The Board supports continued in-fill housing developments with the following recommendations:

- Restricted to inner-Mosgiel, close to amenities, green space and public transport.
- With urgency the DCC must improve the protection of special character homes and buildings with either special character zones or by updating its register of heritage buildings, or both. Mosgiel has several special character buildings within the in-fill zone which are not protected.
- Significant trees should be protected other than for the factors already identified by council.

Section 4. Community Board Activities

The Mosgiel Taieri Community Board has identified the following activities that the Community Board will deliver to our community throughout the year. These activities will be undertaken and funded by the Community Board.

Activity 1. Community Engagement Plan

The MTCB will engage with the constituents, service groups, business and organisations throughout the Mosgiel Taieri community to impart information that may be important to them, and to seek feedback on issues that concern the Board and the councils. This will be achieved by various initiatives, including:

- Engagement via Social Media channels.
- Printed MTCB newsletters and brochures.
- Distribution of supplied material from councils and agencies.
- Public meetings.
- Participation in meetings arranged by both councils.
- Participation in the Otago Taieri A and P show.
- Participation in the Party in the Park community event.

Activity 2. Community Response Plan

The DCC and the MTCB has a statutory role under the Civil Defence Emergency Management Act to respond in the event of a civil emergency occurring within our community. The Mosgiel Taieri Community Board has a responsibility to interface between the DCC, the Mosgiel Taieri Community Response Group and Otago Civil Defence Emergency Management.

The MTCB will continue to support the MTCRG to produce and manage an effective Community Response Plan for all Taieri communities.

Activity 3. Liaison with the Taieri Network

The MTCB will liaise closely with the DCC funded place-based group, The Taieri Network on matters of community interest and community benefit. The principal objective will be to ensure that both entities work together to deliver the best outcome for our community and the DCC.

Activity 4. Coronation Hall Trust

The MTCB will continue to have input into the Coronation Hall to ensure that this community facility is being used appropriately and with benefit to the community.

Activity 5. Taieri Trails Group

The MTCB will participate on the Taieri Trails Group to establish an off-road cycling and walking trail between Mosgiel and Outram, and then between Outram and Waihola.

Activity 6. Lower Taieri Liaison Group

The MTCB has an appointment to the ORC's Lower Taieri Liaison Group which has been set up to provide liaison between the ORC and landowners affected by the operation of the Lower Taieri Flood Protection and Drainage schemes.

Section 5. Plans

The Mosgiel Taieri Community Board has plans to support its activities and requirements. These plans are set out below.

5.1 Community Response Plan

In conjunction with the Mosgiel Taieri Community Response Group, the Mosgiel Taieri Community Board has contributed to the development of a Community Response Plan for the Taieri community.

This is an extensive plan which will be used in the event of a Civil Defence Emergency including flooding, earthquake, and wildfire.

A Community Resilience Guide for the Mosgiel-Taieri area is available at:

<https://www.otagocdem.govt.nz/media/fbklbekj/mosgiel-taieri-community-resilience-guide-20-01-2025.pdf>

5.2 Community Engagement Plan

Members of the community are invited to make a comment on the Mosgiel Taieri Community Board Community Plan at any time. You may have a view on the Board's priorities and actions. You may want to ask the Board to assist with an issue involving the DCC or the ORC. You are encouraged to have input into the Community Plan and work of the Mosgiel Taieri Community Board.

There are many ways that members of the community can do this:

- Verbally by contacting a board member directly using the contact details provided.
- Write to the board at the address below.
- In person at community events, public meetings or by presenting at the Public Forum section of a scheduled Board meeting.

Please send written communication to:

The Chairperson
Mosgiel Taieri Community Board
c/o Dunedin City Council
P O Box 5045
Dunedin 9058

Or by email to Rebecca.ShepherdMTCB@outlook.com or governance.support@dcc.govt.nz

Section 6. Community Board Meeting Schedule 2026

The Mosgiel Taieri Community Board meets regularly. Most Board meetings are held at the Downes Room, Mosgiel Public Library, Hartsonge Avenue, Mosgiel commencing at 4.00PM. The April meeting will be held in Outram (venue to be advised) commencing at 4.00PM. There will be an opportunity for members of the community to drop in to meet Board members before the meeting from 3.00PM.

Confirmed Meeting Dates for 2026:

- Wednesday, 18 February – Mosgiel
 - Wednesday 1 April – Outram
 - Wednesday 3 June –Mosgiel
- Wednesday 12 August – Mosgiel
- Wednesday 28 October – Mosgiel
- Wednesday 9 December – Mosgiel