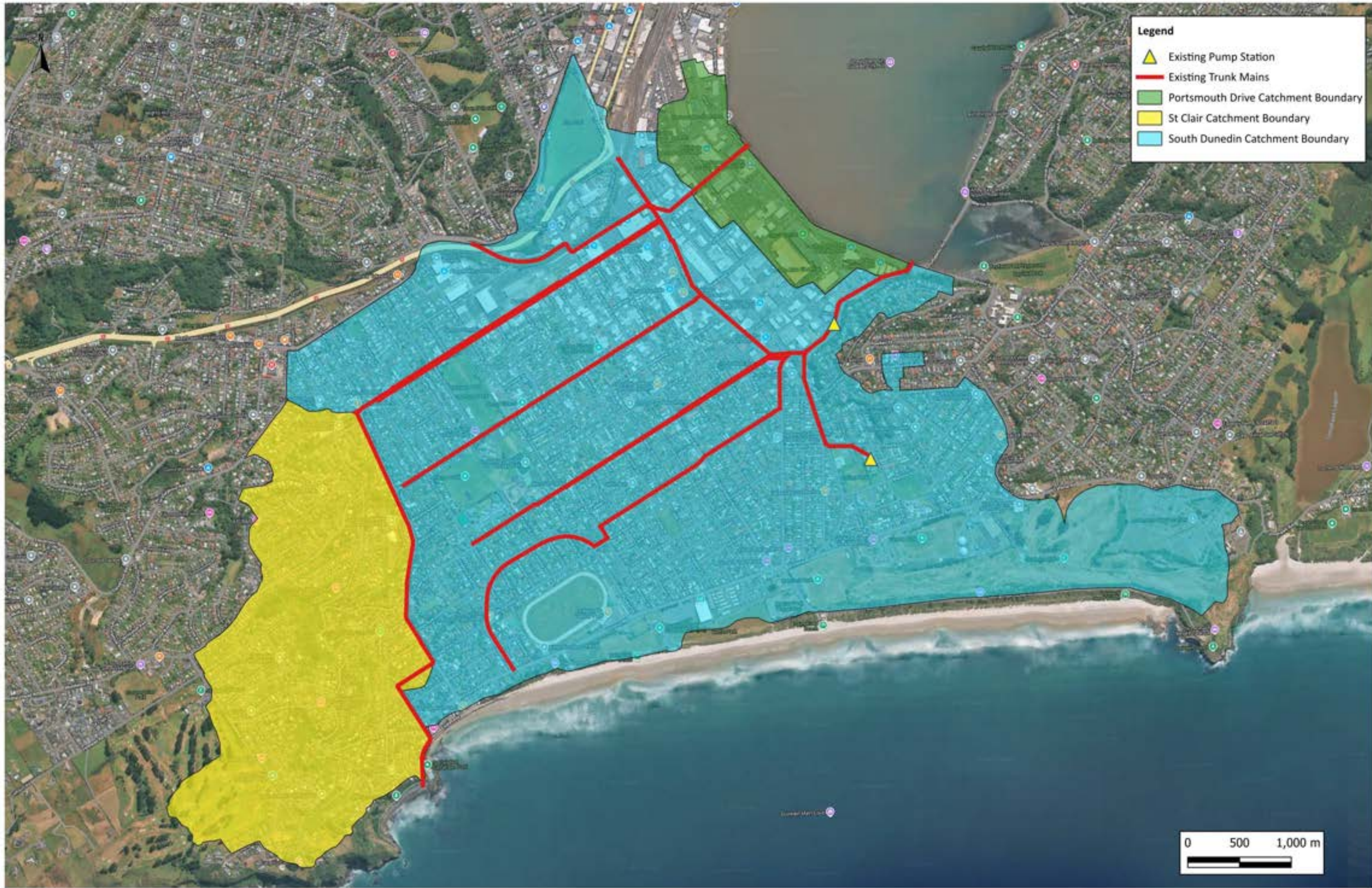


Appendix	Map number	Drawing title
A	A1	South Dunedin existing network overview
B	B1	South Dunedin Baseline network (existing network + quick wins)
C	C1	South Dunedin Short Term network
D	D1	South Dunedin Future O-3 Medium Term (2060)
D	D2	South Dunedin Future O-3 Long Term (2100)
E	E1	South Dunedin Future O-4 Medium Term (2060)
E	E2	South Dunedin Future O-4 Long Term (2100)
F	F1	South Dunedin Future O-5 Medium Term (2060)
F	F2	South Dunedin Future O-5 Long Term (2100)
G	G1	Maximum flood depth map for Baseline network 10-year ARI RCP 8.5 2025-MHWS
G	G2	Maximum flood depth map for Baseline network 50-year ARI RCP 8.5 2025-MHWS
G	G3	Maximum flood depth map for Baseline network 100-year ARI RCP 8.5 2025-MHWS
H	H1	Maximum flood depth map for Short Term network 10-year RCP 8.5 2025-MHWS
H	H2	Maximum flood depth map for Short Term network 50-year RCP 8.5 2025-MHWS
H	H3	Maximum flood depth map for Short Term network 100-year RCP 8.5 2025-MHWS
I	I1	Flood Depth Difference between Short Term and Base- 10 yr design storm
I	I2	Flood Depth Difference between Short Term and Base- 50 yr design storm
I	I3	Flood Depth Difference between Short Term and Base- 100 yr design storm
J	J1	Maximum flood depth map for O-3 10 year (MT) RCP 8.5 2060 MHWS + 0.5 m SLR
J	J2	Maximum flood depth map for O-3 50 year (MT) RCP 8.5 2060 MHWS + 0.5 m SLR
J	J3	Maximum flood depth map for O-3 100 year (MT) RCP 8.5 2060 MHWS + 0.5 m SLR
J	J4	Maximum flood depth map for O-3 (LT) RCP 8.5 2100 MHWS + 1.1 m SLR
J	J5	Maximum flood depth map for O-3 50 year (LT) RCP 8.5 2100 MHWS + 1.1 m SLR
J	J6	Maximum flood depth map for O-3 100 year (LT) RCP 8.5 2100 MHWS + 1.1 m SLR
K	K1	Flood Depth Difference between O-3 (LT) and Base- 10 yr design storm
K	K2	Flood Depth Difference between O-3 (LT) and Base- 50 yr design storm
K	K3	Flood Depth Difference between O-3 (LT) and Base- 100 yr design storm
L	L1	Maximum flood depth map for O-4 10 year (MT) RCP 8.5 2060 MHWS + 0.5 m SLR
L	L2	Maximum flood depth map for O-4 50 year (MT) RCP 8.5 2060 MHWS + 0.5 m SLR
L	L3	Maximum flood depth map for O-4 100 year (MT) RCP 8.5 2060 MHWS + 0.5 m SLR
L	L4	Maximum flood depth map for O-4 10 year (LT) RCP 8.5 2100 MHWS + 1.1 m SLR
L	L5	Maximum flood depth map for O-4 50 year (LT) RCP 8.5 2100 MHWS + 1.1 m SLR
L	L6	Maximum flood depth map for O-4 100 year (LT) RCP 8.5 2100 MHWS + 1.1 m SLR
M	M1	Flood Depth Difference between O-4 (LT) and Base- 10 yr design storm
M	M2	Flood Depth Difference between O-4 (LT) and Base- 50 yr design storm
M	M3	Flood Depth Difference between O-4 (LT) and Base- 100 yr design storm
N	N1	Maximum flood depth map for O-5 10-year (MT) RCP 8.5 2060 MHWS + 0.5 m SLR
N	N2	Maximum flood depth map for O-5 50-year (MT) RCP 8.5 2060 MHWS + 0.5 m SLR
N	N3	Maximum flood depth map for O-5 100-year (MT) RCP 8.5 2060 MHWS + 0.5 m SLR
N	N4	Maximum flood depth map for O-5 10-year (LT) RCP 8.5 2100 MHWS + 1.1 m SLR

Appendix	Map number	Drawing title
N	N5	Maximum flood depth map for O-5 50-year (LT) RCP 8.5 2100 MHWS + 1.1 m SLR
N	N6	Maximum flood depth map for O-5 100 year (LT) RCP 8.5 2100 MHWS + 1.1 m SLR
O	O1	Flood Depth Difference between O-5 (LT) and Base- 10 yr design storm
O	O2	Flood Depth Difference between O-5 (LT) and Base- 50 yr design storm
O	O3	Flood Depth Difference between O-5 (LT) and Base- 100 yr design storm
P	P1	Sensitivity run 1- Flood depth difference between long duration (24 hr) and critical duration (6 hr) 10 year RCP 8.5 2100 MHWS for O-3 (LT)
P	P2	Sensitivity run 2- Flood depth difference between long duration (24 hr) and critical duration (6 hr) 50 year RCP 8.5 2100 MHWS for O-3 (LT)
P	P3	Sensitivity run 3- Flood depth difference between 100 year RCP 4.5 2100 MHWS + 0.6 m SLR and 100 year RCP 8.5 2100 MHWS + 1.1 m SLR for O-3 (LT)
Q	Q1	Sensitivity run 1- Flood depth difference between long duration (24 hr) and critical duration (6 hr) 10 year RCP 8.5 2100 MHWS for O-4 (LT)
Q	Q2	Sensitivity run 2- Flood depth difference between long duration (24 hr) and critical duration (6 hr) 50 year RCP 8.5 2100 MHWS for O-4
Q	Q3	Sensitivity run 3- Flood depth difference between 100 year RCP 4.5 2100 MHWS + 0.6 m SLR and 100 year RCP 8.5 2100 MHWS + 1.1 m SLR for future O-4 (LT)
R	R1	Sensitivity run 1- Flood depth difference between long duration (24 hr) and critical duration (6 hr) 10 year RCP 8.5 2100 MHWS for O-5 (LT)
R	R2	Sensitivity run 2- Flood depth difference between long duration (24 hr) and critical duration (6 hr) 50 year RCP 8.5 2100 MHWS for O-5 (LT)
R	R3	Sensitivity run 3- Flood depth difference between 100 year RCP 4.5 2100 MHWS + 0.6 m SLR and 100 year RCP 8.5 2100 MHWS + 1.1 m SLR for O-5 (LT)



**Legend**

- ▲ Existing Pump Station
- Existing Trunk Mains
- Portsmouth Drive Catchment Boundary
- St Clair Catchment Boundary
- South Dunedin Catchment Boundary



MAP NO:	4700990 - A1
REV:	A

South Dunedin Existing Network Overview

DRAWN BY:	Anvesh Bavula
DATE:	2025-11-27
CHECK BY:	Kit Pascoe
DATE:	2025-11-27
<small>Disclaimer: This map contains data derived in part or wholly from sources other than BECA. No representations or warranties are made by BECA as to the accuracy or completeness of this information. The map is intended for distribution as a PDF document. The scale may be incorrect when printed.</small>	



**Legend**

- Quick Win Pump Station
- Existing Pumps
- Quick Wins
- Existing Trunk Mains



<b>DUNEDIN</b> CITY COUNCIL   Ōtautahi	
MAP NO:	4700990 - B1
REV:	B

South Dunedin Baseline Network (Existing Network + Quick Wins)

DRAWN BY:	Anvesh Ravula
DATE:	2026-05-13
CHECK BY:	Kit Pascoe
DATE:	2026-05-13
<small>Disclaimer: This map contains data derived in part or wholly from sources other than Beica. No representations or warranties are made by Beica as to the accuracy or completeness of this information. The map is intended for distribution as a PDF document. The scale may be incorrect when printed.</small>	



**Legend**

- Storage
- New/Upsized Pump Stations
- Quick Win Pump Station
- Existing Pump Stations
- Quick Wins
- New/Upsized Pipes
- Existing Trunk Mains

MAP NO: 4700990 - C1	REV: B

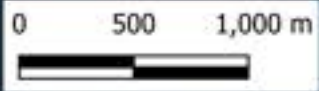
South Dunedin Short Term Network

DRAWN BY: Anvish Bavula	
DATE: 2026-05-13	
CHECK BY: Kit Pascoe	
DATE: 2026-05-13	
Disclaimer: This map contains data derived in part or wholly from sources other than BECA. No representations or warranties are made by BECA as to the accuracy or completeness of this information. The map is intended for distribution as a PDF document. The scale may be incorrect when printed.	



**Legend**

- ▲ Existing Pump Stations
- ▲ Quick Wins Pump Stations
- ▲ Upsized/New Pump Stations
- Existing Trunk Mains
- Quick Wins
- New/Upsized Pipes - Short Term
- New/Upsized Pipes - Option 3 MT
- Sea Wall
- Storage
- Raised Land - MT
- Medium Density Catchments



		MAP NO: <b>4700990 - D1</b>	REV: <b>B</b>
--	--	--------------------------------	------------------

South Dunedin Future - Option 3 Medium Term (2060)

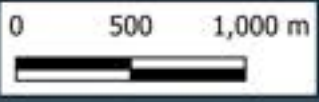
DRAWN BY:	Arvesh Bavula
DATE:	2026-05-13
CHECK BY:	Kit Pascoe
DATE:	2026-05-13
<small>Disclaimer:          This map contains data derived in part or wholly from sources other than Beica. No representations or warranties are made by Beica as to the accuracy or completeness of this information. The map is intended for distribution as a PDF document. The scale may be incorrect when printed.</small>	





**Legend**

- ▲ Existing Pump Stations
- ▲ Quick Wins Pump Stations
- ▲ Upsized/New Pump Stations
- Existing Trunk Mains
- River Reaches
- Quick Wins
- New/Upsized Pipes - Short Term
- New/Upsized Pipes - Option 4 MT
- Sea Wall
- Storage



MAP NO:	4700990 - E1	REV:	B

South Dunedin Future - Option 4 Medium Term (2060)

DRAWN BY:	Arvesh Bavula
DATE:	2026-05-13
CHECK BY:	Kit Pascoe
DATE:	2026-05-13
<small>Disclaimer: This map contains data derived in part or wholly from sources other than Beica. No representations or warranties are made by Beica as to the accuracy or completeness of this information. The map is intended for distribution as a PDF document. The scale may be incorrect when printed.</small>	



**Legend**

- ▲ New/Upsized Pump Stations
- ▲ Quick Wins Pump Stations
- ▲ Existing Pump Stations
- Quick Wins
- New/Upsized Pipes - Short Term
- Existing Trunk Mains
- River Reaches
- New/Upsized Pipes - Option 4 MT
- Sea Wall
- Storage
- Green Spaces - Option 4 LT
- Medium Density Catchments LT



		MAP NO: <b>4700990 - E2</b>	REV: <b>B</b>
--	--	--------------------------------	------------------

South Dunedin Future - Option 4 Long Term (2100)

DRAWN BY:	Arvish Bavula
DATE:	2026-05-13
CHECK BY:	Kit Pascoe
DATE:	2026-05-13
<small>Disclaimer:          This map contains data derived in part or wholly from sources other than BECA. No representations or warranties are made by BECA as to the accuracy or completeness of this information. The map is intended for distribution as a PDF document. The scale may be incorrect when printed.</small>	



**Legend**

- ▲ Existing Pump Stations
- ▲ Quick Wins Pump Stations
- ▲ Upsized/New Pump Stations
- Existing Trunk Mains
- Quick Wins
- New/Upsized Pipes - Short Term
- New/Upsized Pipes - Option 5 MT
- - - Sea Wall
- River Reaches
- Storage
- Raised Land
- Medium Density Catchments

		MAP NO: <b>4700990 - F1</b>	REV: <b>B</b>
--	--	--------------------------------	------------------

South Dunedin Future - Option 5 Medium Term (2060)

DRAWN BY:	Arvesh Bavula
DATE:	2026-05-13
CHECK BY:	Kit Pascoe
DATE:	2026-05-13
Disclaimer: This map contains data derived in part or wholly from sources other than BECA. No representations or warranties are made by BECA as to the accuracy or completeness of this information. The map is intended for distribution as a PDF document. The scale may be incorrect when printed.	







**Legend**

**Flood Depth (m)**

- ≤ 0.005
- 0.005 - 0.025
- 0.025 - 0.050
- 0.050 - 0.100
- 0.100 - 0.150
- 0.150 - 0.500
- 0.500 - 1.000
- > 1.000

MAP NO: <b>4700990 - G2</b>	REV: <b>A</b>

South Dunedin - Baseline Network  
Maximum Flood Depth Map  
(1 in 50 Year RCP 8.5 2025 MHWS)

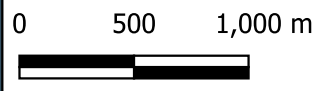
DRAWN BY:	Anvesh Ravula
DATE:	2025-11-26
CHECK BY:	Kit Pascoe
DATE:	2025-11-26
<small>Disclaimer: This map contains data derived in part or wholly from sources other than Beca. No representations or warranties are made by Beca as to the accuracy or completeness of this information. The map is intended for distribution as a PDF document. The scale may be incorrect when printed.</small>	



**Legend**

**Flood Depth (m)**

- ≤ 0.005
- 0.005 - 0.025
- 0.025 - 0.050
- 0.050 - 0.100
- 0.100 - 0.150
- 0.150 - 0.500
- 0.500 - 1.000
- > 1.000



MAP NO: <b>4700990 - G3</b>	REV: <b>A</b>	

South Dunedin - Baseline Network  
Maximum Flood Depth Map  
(1 in 100 Year RCP 8.5 2025 MHWS)

DRAWN BY:	Anvesh Ravula
DATE:	2025-11-26
CHECK BY:	Kit Pascoe
DATE:	2025-11-26
<small>Disclaimer: This map contains data derived in part or wholly from sources other than Beca. No representations or warranties are made by Beca as to the accuracy or completeness of this information. The map is intended for distribution as a PDF document. The scale may be incorrect when printed.</small>	



**Legend**

**Flood Depth (m)**

- ≤ 0.005
- 0.005 - 0.025
- 0.025 - 0.050
- 0.050 - 0.100
- 0.100 - 0.150
- 0.150 - 0.500
- 0.500 - 1.000
- > 1.000

MAP NO: <b>4700990 - H1</b>	REV: <b>B</b>

South Dunedin - Short Term  
Maximum Flood Depth Map  
(1 in 10 Year RCP 8.5 2025 MHWS)

DRAWN BY:	Anvesh Ravula
DATE:	2026-05-13
CHECK BY:	Kit Pascoe
DATE:	2026-05-13
<small>Disclaimer: This map contains data derived in part or wholly from sources other than Beca. No representations or warranties are made by Beca as to the accuracy or completeness of this information. The map is intended for distribution as a PDF document. The scale may be incorrect when printed.</small>	



**Legend**

**Flood Depth (m)**

- ≤ 0.005
- 0.005 - 0.025
- 0.025 - 0.050
- 0.050 - 0.100
- 0.100 - 0.150
- 0.150 - 0.500
- 0.500 - 1.000
- > 1.000

MAP NO: <b>4700990 - H2</b>	REV: <b>B</b>

South Dunedin - Short Term  
Maximum Flood Depth Map  
(1 in 50 Year RCP 8.5 2025 MHWS)

DRAWN BY: Anvesh Ravula	DATE: 2026-05-13
CHECK BY: Kit Pascoe	DATE: 2026-05-13
<small>Disclaimer: This map contains data derived in part or wholly from sources other than Beca. No representations or warranties are made by Beca as to the accuracy or completeness of this information. The map is intended for distribution as a PDF document. The scale may be incorrect when printed.</small>	



Legend	
Flood Depth (m)	
[Light Blue]	<= 0.005
[Light Blue]	0.005 - 0.025
[Cyan]	0.025 - 0.050
[Blue]	0.050 - 0.100
[Dark Blue]	0.100 - 0.150
[Yellow]	0.150 - 0.500
[Red]	0.500 - 1.000
[Brown]	> 1.000

MAP NO: <b>4700990 - H3</b>	REV: <b>B</b>

South Dunedin - Short Term  
Maximum Flood Depth Map  
(1 in 100 Year RCP 8.5 2025 MHWS)

DRAWN BY:	Anvesh Ravula
DATE:	2026-05-13
CHECK BY:	Kit Pascoe
DATE:	2026-05-13
<small>Disclaimer: This map contains data derived in part or wholly from sources other than Beca. No representations or warranties are made by Beca as to the accuracy or completeness of this information. The map is intended for distribution as a PDF document. The scale may be incorrect when printed.</small>	



**Legend**

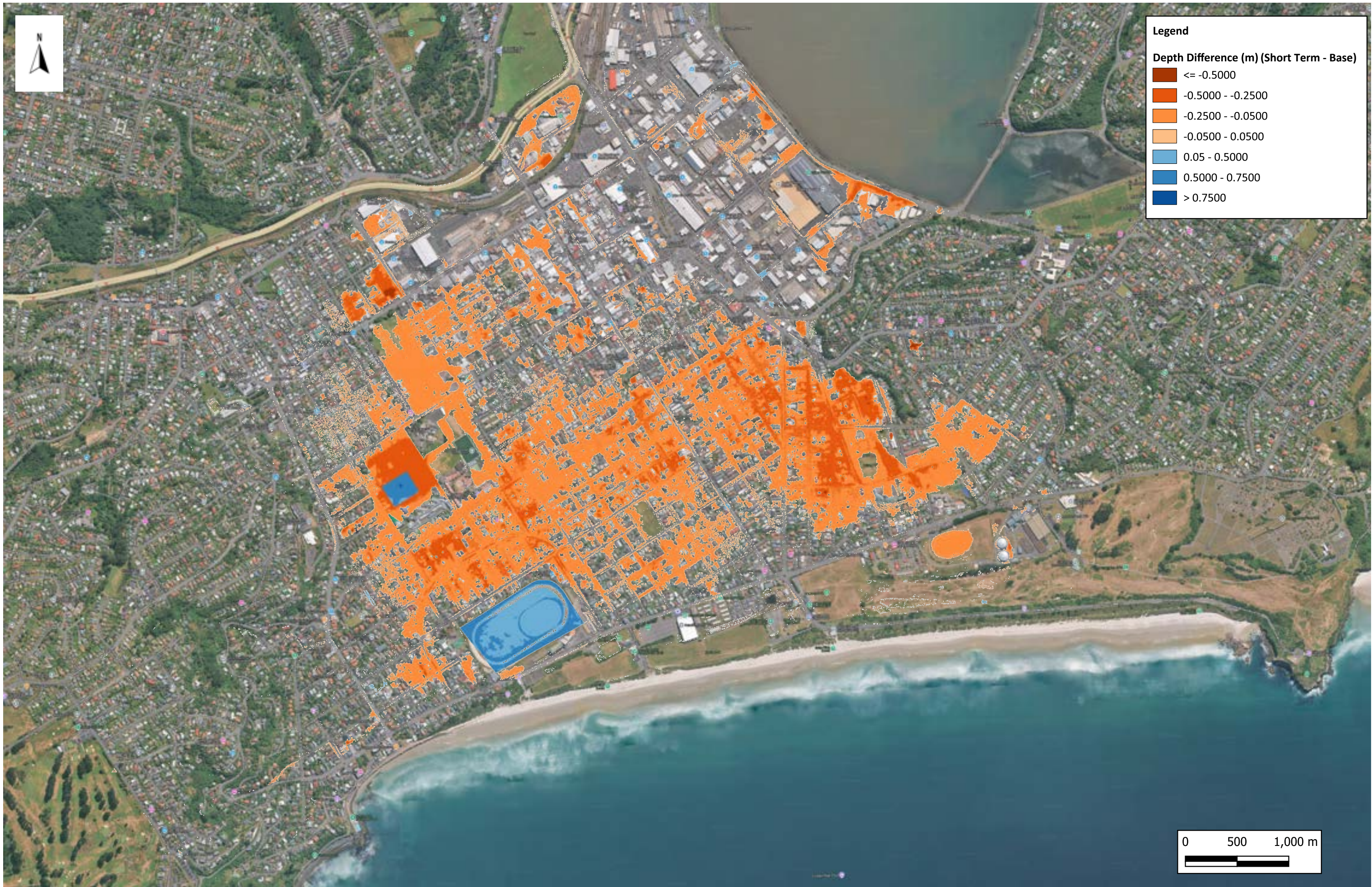
**Depth Difference (m) (Short Term - Base)**

- $\le -0.5000$
- $-0.5000 - -0.2500$
- $-0.2500 - -0.0500$
- $-0.0500 - 0.0500$
- $0.05 - 0.5000$
- $0.5000 - 0.7500$
- $> 0.7500$

MAP NO: <b>4700990 - 11</b>	REV: <b>B</b>

South Dunedin - Short Term  
Flood Depth Difference Map Between Short Term & Base  
(1 in 10 Year Design Storm)

DRAWN BY:	Anvesh Ravula
DATE:	2026-05-13
CHECK BY:	Kit Pascoe
DATE:	2026-05-13
<small>Disclaimer: This map contains data derived in part or wholly from sources other than Beca. No representations or warranties are made by Beca as to the accuracy or completeness of this information. The map is intended for distribution as a PDF document. The scale may be incorrect when printed.</small>	

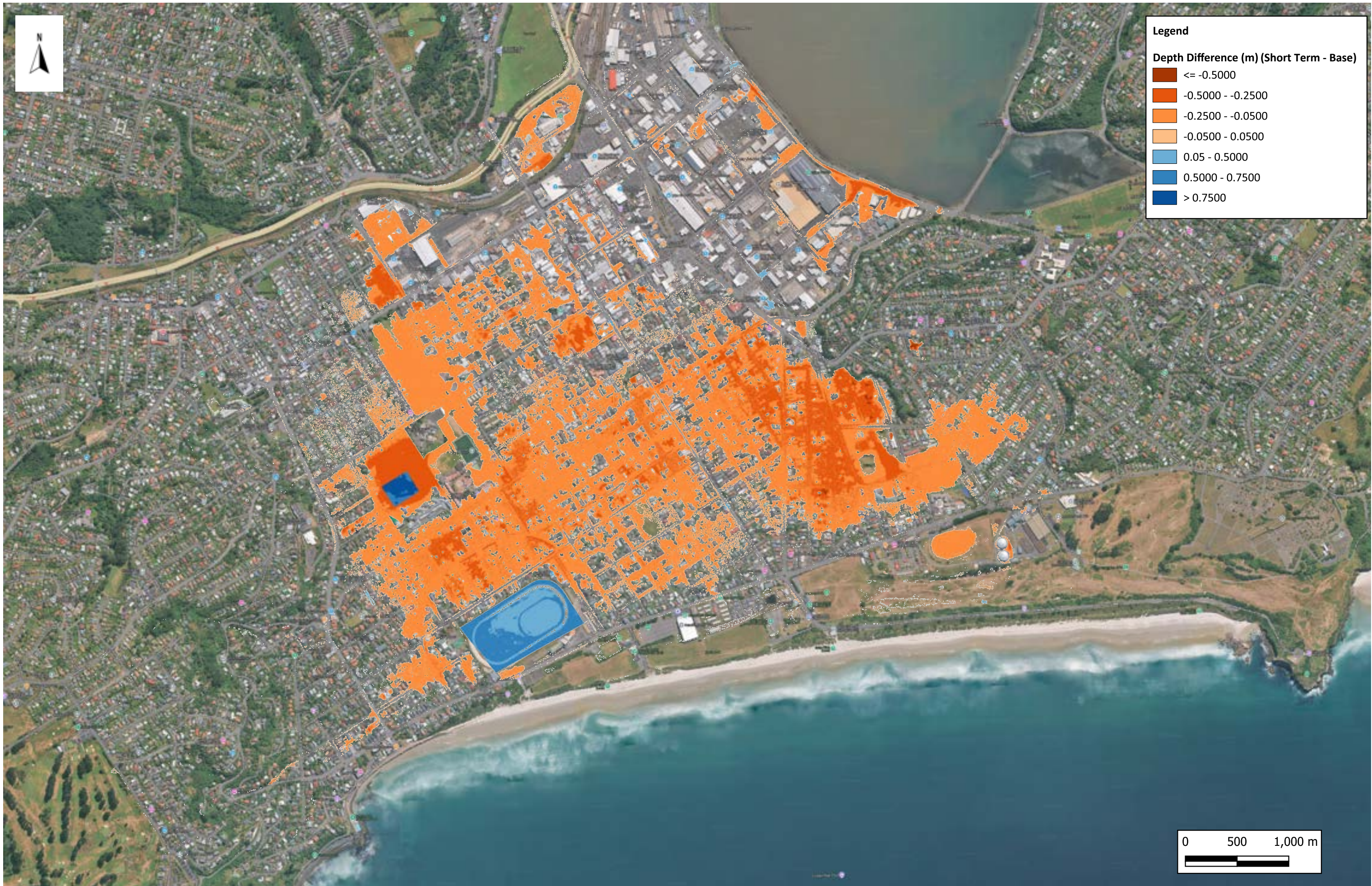


Legend	
Depth Difference (m) (Short Term - Base)	
	$\le -0.5000$
	$-0.5000 - -0.2500$
	$-0.2500 - -0.0500$
	$-0.0500 - 0.0500$
	$0.05 - 0.5000$
	$0.5000 - 0.7500$
	$> 0.7500$

MAP NO:	4700990 - 12
REV:	B

South Dunedin - Short Term  
 Flood Depth Difference Map Between Short Term & Base  
 (1 in 50 Year Design Storm)

DRAWN BY:	Anvesh Ravula
DATE:	2026-05-13
CHECK BY:	Kit Pascoe
DATE:	2026-05-13
<small>Disclaimer:        This map contains data derived in part or wholly from sources other than Beca. No representations or warranties are made by Beca as to the accuracy or completeness of this information. The map is intended for distribution as a PDF document. The scale may be incorrect when printed.</small>	



Legend	
Depth Difference (m) (Short Term - Base)	
<span style="display:inline-block; width:15px; height:10px; background-color:darkred;"></span>	<= -0.5000
<span style="display:inline-block; width:15px; height:10px; background-color:orange;"></span>	-0.5000 - -0.2500
<span style="display:inline-block; width:15px; height:10px; background-color:lightorange;"></span>	-0.2500 - -0.0500
<span style="display:inline-block; width:15px; height:10px; background-color:yellow;"></span>	-0.0500 - 0.0500
<span style="display:inline-block; width:15px; height:10px; background-color:lightblue;"></span>	0.05 - 0.5000
<span style="display:inline-block; width:15px; height:10px; background-color:blue;"></span>	0.5000 - 0.7500
<span style="display:inline-block; width:15px; height:10px; background-color:darkblue;"></span>	> 0.7500



MAP NO:	4700990 - 13
REV:	B

South Dunedin - Short Term  
Flood Depth Difference Map Between Short Term & Base  
(1 in 100 Year Design Storm)

DRAWN BY:	Anvesh Ravula
DATE:	2026-05-13
CHECK BY:	Kit Pascoe
DATE:	2026-05-13
<small>Disclaimer: This map contains data derived in part or wholly from sources other than Beca. No representations or warranties are made by Beca as to the accuracy or completeness of this information. The map is intended for distribution as a PDF document. The scale may be incorrect when printed.</small>	









**Legend**

- Greenspaces
- Medium Density Subcatchments
- Sea Wall

**Depth (m)**

- <= 0.005
- 0.005 - 0.025
- 0.025 - 0.050
- 0.050 - 0.100
- 0.100 - 0.150
- 0.150 - 0.500
- 0.500 - 1.000
- > 1.000

		REV: A
MAP NO: <b>4700990 - J4</b>		

South Dunedin - Option 3 Long Term  
 Maximum Flood Depth Map  
 (1 in 10 Year RCP 8.5 2100 MHWS + 1.1 m SLR)

DRAWN BY:	Anvesh Ravula
DATE:	2025-11-27
CHECK BY:	Kit Pascoe
DATE:	2025-11-27
<small>Disclaimer:          This map contains data derived in part or wholly from sources other than Beca. No representations or warranties are made by Beca as to the accuracy or completeness of this information. The map is intended for distribution as a PDF document. The scale may be incorrect when printed.</small>	



**Legend**

- Greenspaces
- Medium Density Subcatchments
- Sea Wall

**Depth (m)**

- <= 0.005
- 0.005 - 0.025
- 0.025 - 0.050
- 0.050 - 0.100
- 0.100 - 0.150
- 0.150 - 0.500
- 0.500 - 1.000
- > 1.000

		REV: A
MAP NO: <b>4700990 - J5</b>		

South Dunedin - Option 3 Long Term  
 Maximum Flood Depth Map  
 (1 in 50 Year RCP 8.5 2100 MHWS + 1.1 m SLR)

DRAWN BY:	Anvesh Ravula
DATE:	2025-11-27
CHECK BY:	Kit Pascoe
DATE:	2025-11-27
<small>Disclaimer:          This map contains data derived in part or wholly from sources other than Beca. No representations or warranties are made by Beca as to the accuracy or completeness of this information. The map is intended for distribution as a PDF document. The scale may be incorrect when printed.</small>	

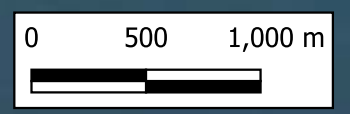


**Legend**

- Greenspaces
- Medium Density Subcatchments
- Sea Wall

**Depth (m)**

- <= 0.005
- 0.005 - 0.025
- 0.025 - 0.050
- 0.050 - 0.100
- 0.100 - 0.150
- 0.150 - 0.500
- 0.500 - 1.000
- > 1.000



MAP NO: <b>4700990 - J6</b>	REV: <b>A</b>

South Dunedin - Option 3 Long Term  
 Maximum Flood Depth Map  
 (1 in 100 Year RCP 8.5 2100 MHWS + 1.1 m SLR)

DRAWN BY:	Anvesh Ravula
DATE:	2025-11-27
CHECK BY:	Kit Pascoe
DATE:	2025-11-27
<small>Disclaimer:          This map contains data derived in part or wholly from sources other than Beca. No representations or warranties are made by Beca as to the accuracy or completeness of this information. The map is intended for distribution as a PDF document. The scale may be incorrect when printed.</small>	



**Legend**

--- Sea Wall

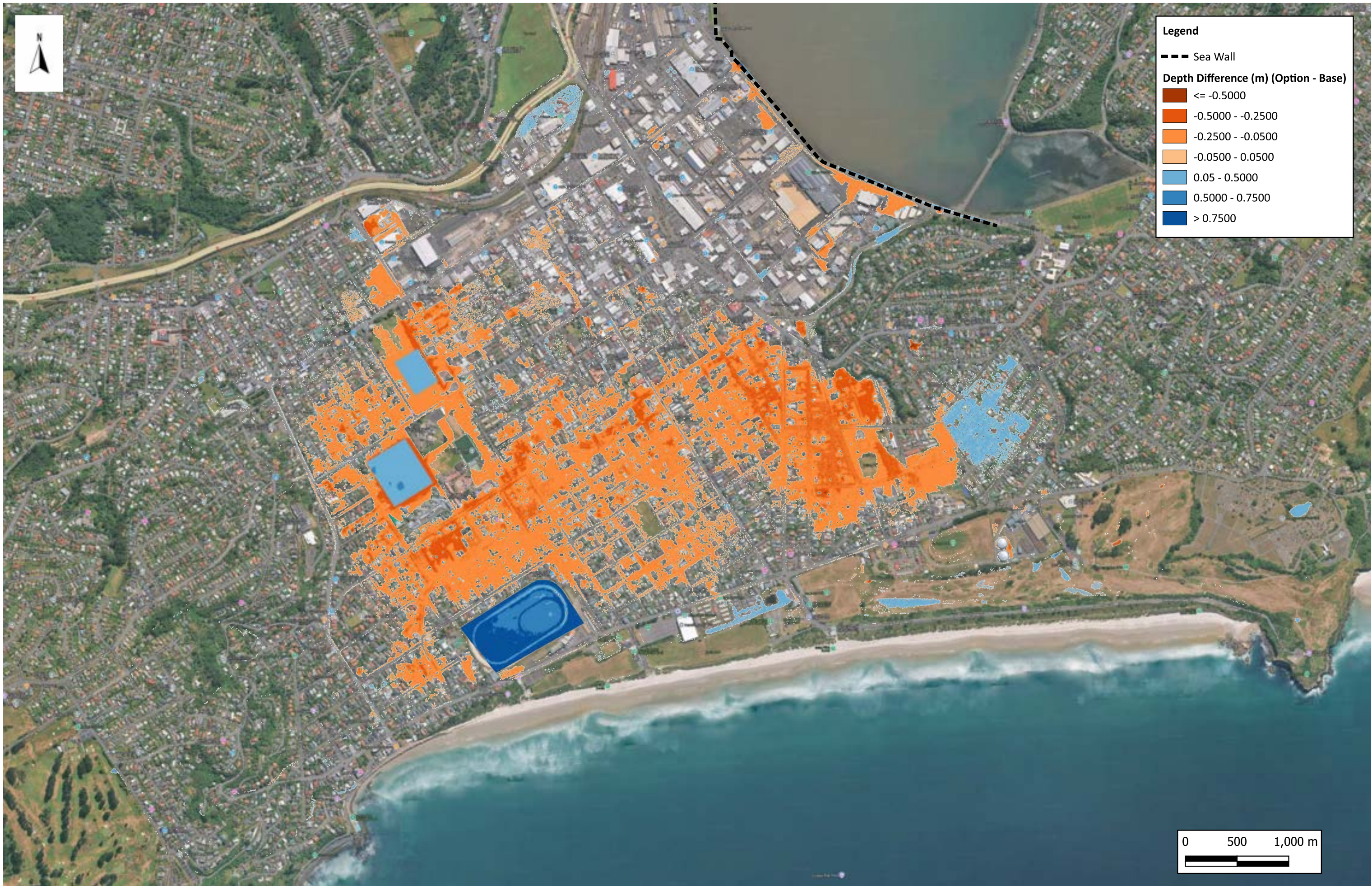
**Depth Difference (m) (Option - Base)**

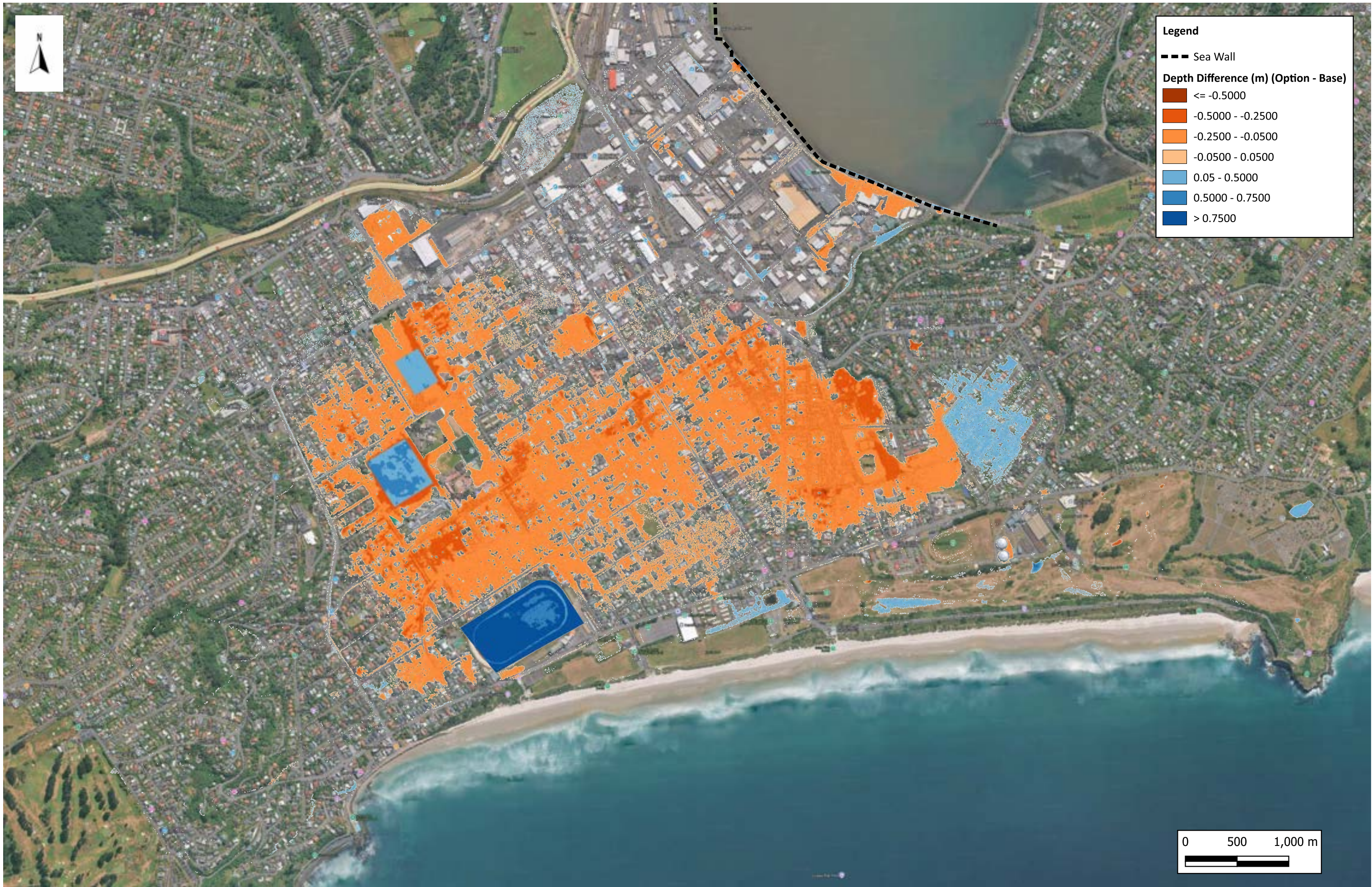
- $\le -0.5000$
- $-0.5000 - -0.2500$
- $-0.2500 - -0.0500$
- $-0.0500 - 0.0500$
- $0.05 - 0.5000$
- $0.5000 - 0.7500$
- $> 0.7500$

MAP NO: <b>4700990 - K1</b>	REV: <b>A</b>

South Dunedin - Option 3  
Flood Depth Difference Map Between Option 3 & Base  
(1 in 10 Year Design Storm)

DRAWN BY:	Anvesh Ravula
DATE:	2025-11-27
CHECK BY:	Kit Pascoe
DATE:	2025-11-27
<small>Disclaimer: This map contains data derived in part or wholly from sources other than Beca. No representations or warranties are made by Beca as to the accuracy or completeness of this information. The map is intended for distribution as a PDF document. The scale may be incorrect when printed.</small>	





**Legend**

--- Sea Wall

**Depth Difference (m) (Option - Base)**

- $\le -0.5000$
- $-0.5000 - -0.2500$
- $-0.2500 - -0.0500$
- $-0.0500 - 0.0500$
- $0.05 - 0.5000$
- $0.5000 - 0.7500$
- $> 0.7500$

MAP NO: <b>4700990 - K3</b>	REV: <b>A</b>

South Dunedin - Option 3  
Flood Depth Difference Map Between Option 3 & Base  
(1 in 100 Year Design Storm)

DRAWN BY:	Anvesh Ravula
DATE:	2025-11-27
CHECK BY:	Kit Pascoe
DATE:	2025-11-27
<small>Disclaimer: This map contains data derived in part or wholly from sources other than Beca. No representations or warranties are made by Beca as to the accuracy or completeness of this information. The map is intended for distribution as a PDF document. The scale may be incorrect when printed.</small>	

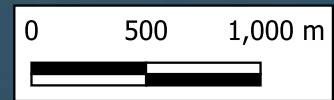


**Legend**

- River Reaches
- Sea Wall

**Depth (m)**

- <= 0.005
- 0.005 - 0.025
- 0.025 - 0.050
- 0.050 - 0.100
- 0.100 - 0.150
- 0.150 - 0.500
- 0.500 - 1.000
- > 1.000



MAP NO:	4700990 - L1
REV:	A

South Dunedin - Option 4 Medium Term  
 Maximum Flood Depth Map  
 (1 in 10 Year RCP 8.5 2060 MHWS + 0.5 m SLR)

DRAWN BY:	Anvesh Ravula
DATE:	2025-11-27
CHECK BY:	Kit Pascoe
DATE:	2025-11-27
<small>Disclaimer:          This map contains data derived in part or wholly from sources other than Beca. No representations or warranties are made by Beca as to the accuracy or completeness of this information. The map is intended for distribution as a PDF document. The scale may be incorrect when printed.</small>	



**Legend**

- River Reaches
- Sea Wall

**Depth (m)**

- <= 0.005
- 0.005 - 0.025
- 0.025 - 0.050
- 0.050 - 0.100
- 0.100 - 0.150
- 0.150 - 0.500
- 0.500 - 1.000
- > 1.000

MAP NO: <b>4700990 - L2</b>	REV: <b>A</b>

South Dunedin - Option 4 Medium Term  
 Maximum Flood Depth Map  
 (1 in 50 Year RCP 8.5 2060 MHWS + 0.5 m SLR)

DRAWN BY:	Anvesh Ravula
DATE:	2025-11-27
CHECK BY:	Kit Pascoe
DATE:	2025-11-27
<small>Disclaimer:          This map contains data derived in part or wholly from sources other than Beca. No representations or warranties are made by Beca as to the accuracy or completeness of this information. The map is intended for distribution as a PDF document. The scale may be incorrect when printed.</small>	



**Legend**

- River Reaches
- Sea Wall

**Depth (m)**

- <= 0.005
- 0.005 - 0.025
- 0.025 - 0.050
- 0.050 - 0.100
- 0.100 - 0.150
- 0.150 - 0.500
- 0.500 - 1.000
- > 1.000

MAP NO: <b>4700990 - L3</b>	REV: <b>A</b>			

South Dunedin - Option 4 Medium Term  
 Maximum Flood Depth Map  
 (1 in 100 Year RCP 8.5 2060 MHWS + 0.5 m SLR)

DRAWN BY:	Anvesh Ravula
DATE:	2025-11-27
CHECK BY:	Kit Pascoe
DATE:	2025-11-27
<small>Disclaimer:          This map contains data derived in part or wholly from sources other than Beca. No representations or warranties are made by Beca as to the accuracy or completeness of this information. The map is intended for distribution as a PDF document. The scale may be incorrect when printed.</small>	







**Legend**

- New Development
- Greenspaces
- Sea Wall
- River Reaches

**Depth (m)**

- <= 0.005
- 0.005 - 0.025
- 0.025 - 0.050
- 0.050 - 0.100
- 0.100 - 0.150
- 0.150 - 0.500
- 0.500 - 1.000
- > 1.000

MAP NO: <b>4700990 - L6</b>		REV: <b>B</b>			

South Dunedin - Option 4 Long Term  
 Maximum Flood Depth Map  
 (1 in 100 Year RCP 8.5 2100 MHWS + 1.1 m SLR)

DRAWN BY:	Anvesh Ravula
DATE:	2026-05-13
CHECK BY:	Kit Pascoe
DATE:	2026-05-13
<small>Disclaimer:          This map contains data derived in part or wholly from sources other than Beca. No representations or warranties are made by Beca as to the accuracy or completeness of this information. The map is intended for distribution as a PDF document. The scale may be incorrect when printed.</small>	