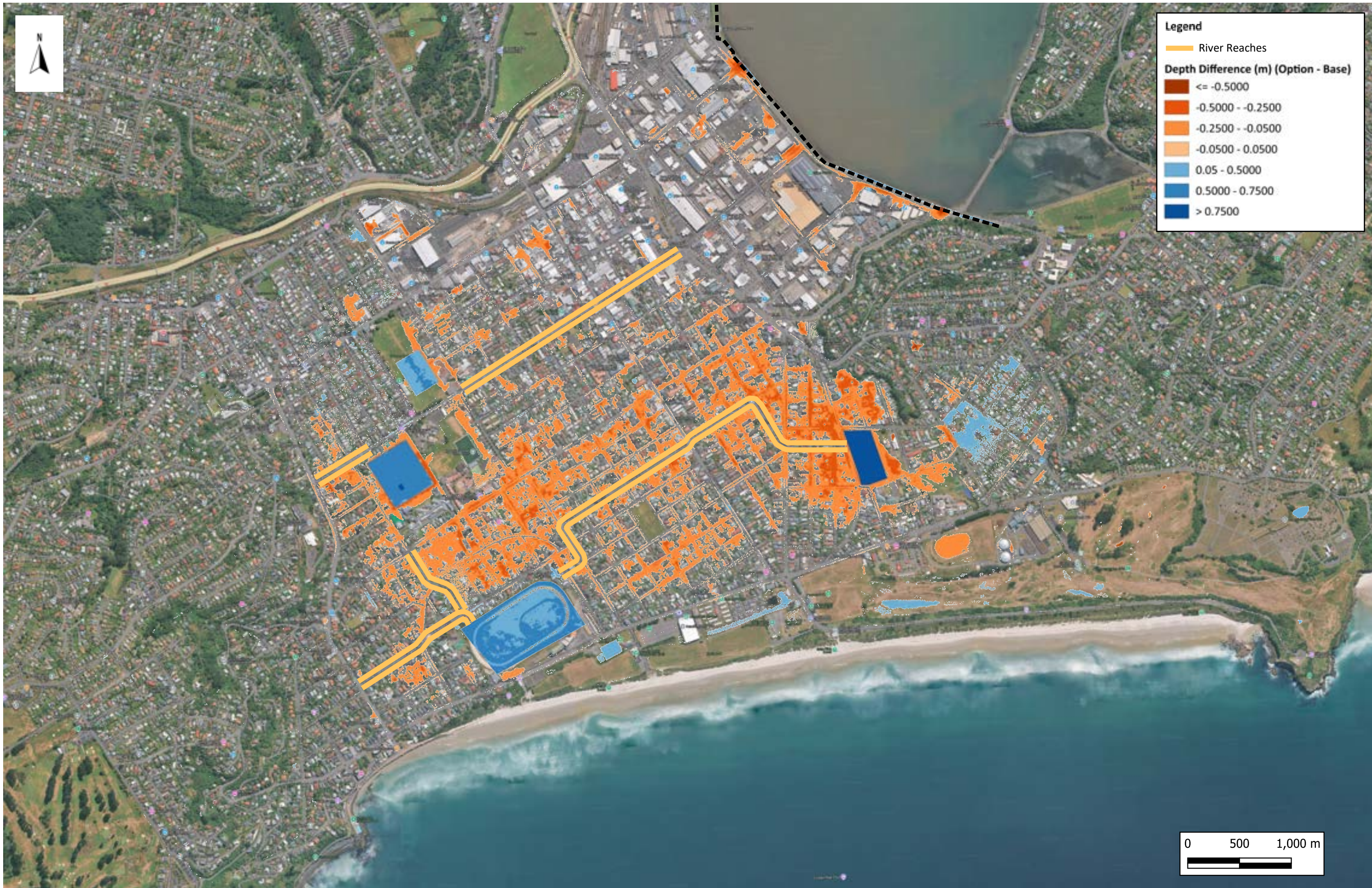
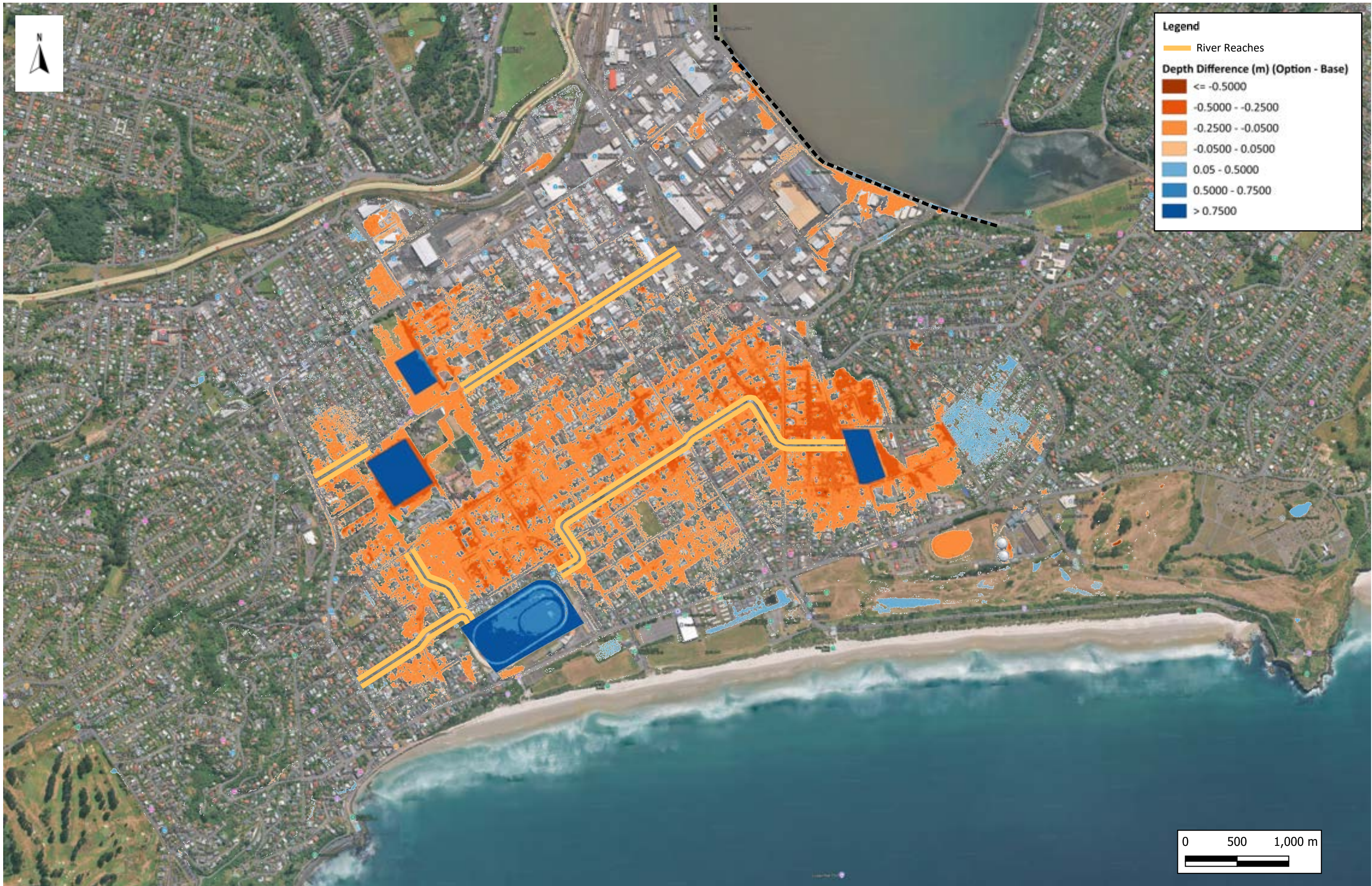


Appendix	Map number	Drawing title
A	A1	South Dunedin existing network overview
B	B1	South Dunedin Baseline network (existing network + quick wins)
C	C1	South Dunedin Short Term network
D	D1	South Dunedin Future O-3 Medium Term (2060)
D	D2	South Dunedin Future O-3 Long Term (2100)
E	E1	South Dunedin Future O-4 Medium Term (2060)
E	E2	South Dunedin Future O-4 Long Term (2100)
F	F1	South Dunedin Future O-5 Medium Term (2060)
F	F2	South Dunedin Future O-5 Long Term (2100)
G	G1	Maximum flood depth map for Baseline network 10-year ARI RCP 8.5 2025-MHWS
G	G2	Maximum flood depth map for Baseline network 50-year ARI RCP 8.5 2025-MHWS
G	G3	Maximum flood depth map for Baseline network 100-year ARI RCP 8.5 2025-MHWS
H	H1	Maximum flood depth map for Short Term network 10-year RCP 8.5 2025-MHWS
H	H2	Maximum flood depth map for Short Term network 50-year RCP 8.5 2025-MHWS
H	H3	Maximum flood depth map for Short Term network 100-year RCP 8.5 2025-MHWS
I	I1	Flood Depth Difference between Short Term and Base- 10 yr design storm
I	I2	Flood Depth Difference between Short Term and Base- 50 yr design storm
I	I3	Flood Depth Difference between Short Term and Base- 100 yr design storm
J	J1	Maximum flood depth map for O-3 10 year (MT) RCP 8.5 2060 MHWS + 0.5 m SLR
J	J2	Maximum flood depth map for O-3 50 year (MT) RCP 8.5 2060 MHWS + 0.5 m SLR
J	J3	Maximum flood depth map for O-3 100 year (MT) RCP 8.5 2060 MHWS + 0.5 m SLR
J	J4	Maximum flood depth map for O-3 (LT) RCP 8.5 2100 MHWS + 1.1 m SLR
J	J5	Maximum flood depth map for O-3 50 year (LT) RCP 8.5 2100 MHWS + 1.1 m SLR
J	J6	Maximum flood depth map for O-3 100 year (LT) RCP 8.5 2100 MHWS + 1.1 m SLR
K	K1	Flood Depth Difference between O-3 (LT) and Base- 10 yr design storm
K	K2	Flood Depth Difference between O-3 (LT) and Base- 50 yr design storm
K	K3	Flood Depth Difference between O-3 (LT) and Base- 100 yr design storm
L	L1	Maximum flood depth map for O-4 10 year (MT) RCP 8.5 2060 MHWS + 0.5 m SLR
L	L2	Maximum flood depth map for O-4 50 year (MT) RCP 8.5 2060 MHWS + 0.5 m SLR
L	L3	Maximum flood depth map for O-4 100 year (MT) RCP 8.5 2060 MHWS + 0.5 m SLR
L	L4	Maximum flood depth map for O-4 10 year (LT) RCP 8.5 2100 MHWS + 1.1 m SLR
L	L5	Maximum flood depth map for O-4 50 year (LT) RCP 8.5 2100 MHWS + 1.1 m SLR
L	L6	Maximum flood depth map for O-4 100 year (LT) RCP 8.5 2100 MHWS + 1.1 m SLR
M	M1	Flood Depth Difference between O-4 (LT) and Base- 10 yr design storm
M	M2	Flood Depth Difference between O-4 (LT) and Base- 50 yr design storm
M	M3	Flood Depth Difference between O-4 (LT) and Base- 100 yr design storm
N	N1	Maximum flood depth map for O-5 10-year (MT) RCP 8.5 2060 MHWS + 0.5 m SLR
N	N2	Maximum flood depth map for O-5 50-year (MT) RCP 8.5 2060 MHWS + 0.5 m SLR
N	N3	Maximum flood depth map for O-5 100-year (MT) RCP 8.5 2060 MHWS + 0.5 m SLR
N	N4	Maximum flood depth map for O-5 10-year (LT) RCP 8.5 2100 MHWS + 1.1 m SLR

Appendix	Map number	Drawing title
N	N5	Maximum flood depth map for O-5 50-year (LT) RCP 8.5 2100 MHWS + 1.1 m SLR
N	N6	Maximum flood depth map for O-5 100 year (LT) RCP 8.5 2100 MHWS + 1.1 m SLR
O	O1	Flood Depth Difference between O-5 (LT) and Base- 10 yr design storm
O	O2	Flood Depth Difference between O-5 (LT) and Base- 50 yr design storm
O	O3	Flood Depth Difference between O-5 (LT) and Base- 100 yr design storm
P	P1	Sensitivity run 1- Flood depth difference between long duration (24 hr) and critical duration (6 hr) 10 year RCP 8.5 2100 MHWS for O-3 (LT)
P	P2	Sensitivity run 2- Flood depth difference between long duration (24 hr) and critical duration (6 hr) 50 year RCP 8.5 2100 MHWS for O-3 (LT)
P	P3	Sensitivity run 3- Flood depth difference between 100 year RCP 4.5 2100 MHWS + 0.6 m SLR and 100 year RCP 8.5 2100 MHWS + 1.1 m SLR for O-3 (LT)
Q	Q1	Sensitivity run 1- Flood depth difference between long duration (24 hr) and critical duration (6 hr) 10 year RCP 8.5 2100 MHWS for O-4 (LT)
Q	Q2	Sensitivity run 2- Flood depth difference between long duration (24 hr) and critical duration (6 hr) 50 year RCP 8.5 2100 MHWS for O-4
Q	Q3	Sensitivity run 3- Flood depth difference between 100 year RCP 4.5 2100 MHWS + 0.6 m SLR and 100 year RCP 8.5 2100 MHWS + 1.1 m SLR for future O-4 (LT)
R	R1	Sensitivity run 1- Flood depth difference between long duration (24 hr) and critical duration (6 hr) 10 year RCP 8.5 2100 MHWS for O-5 (LT)
R	R2	Sensitivity run 2- Flood depth difference between long duration (24 hr) and critical duration (6 hr) 50 year RCP 8.5 2100 MHWS for O-5 (LT)
R	R3	Sensitivity run 3- Flood depth difference between 100 year RCP 4.5 2100 MHWS + 0.6 m SLR and 100 year RCP 8.5 2100 MHWS + 1.1 m SLR for O-5 (LT)



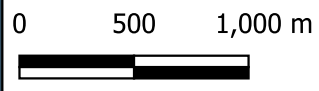


**Legend**

— River Reaches

**Depth Difference (m) (Option - Base)**

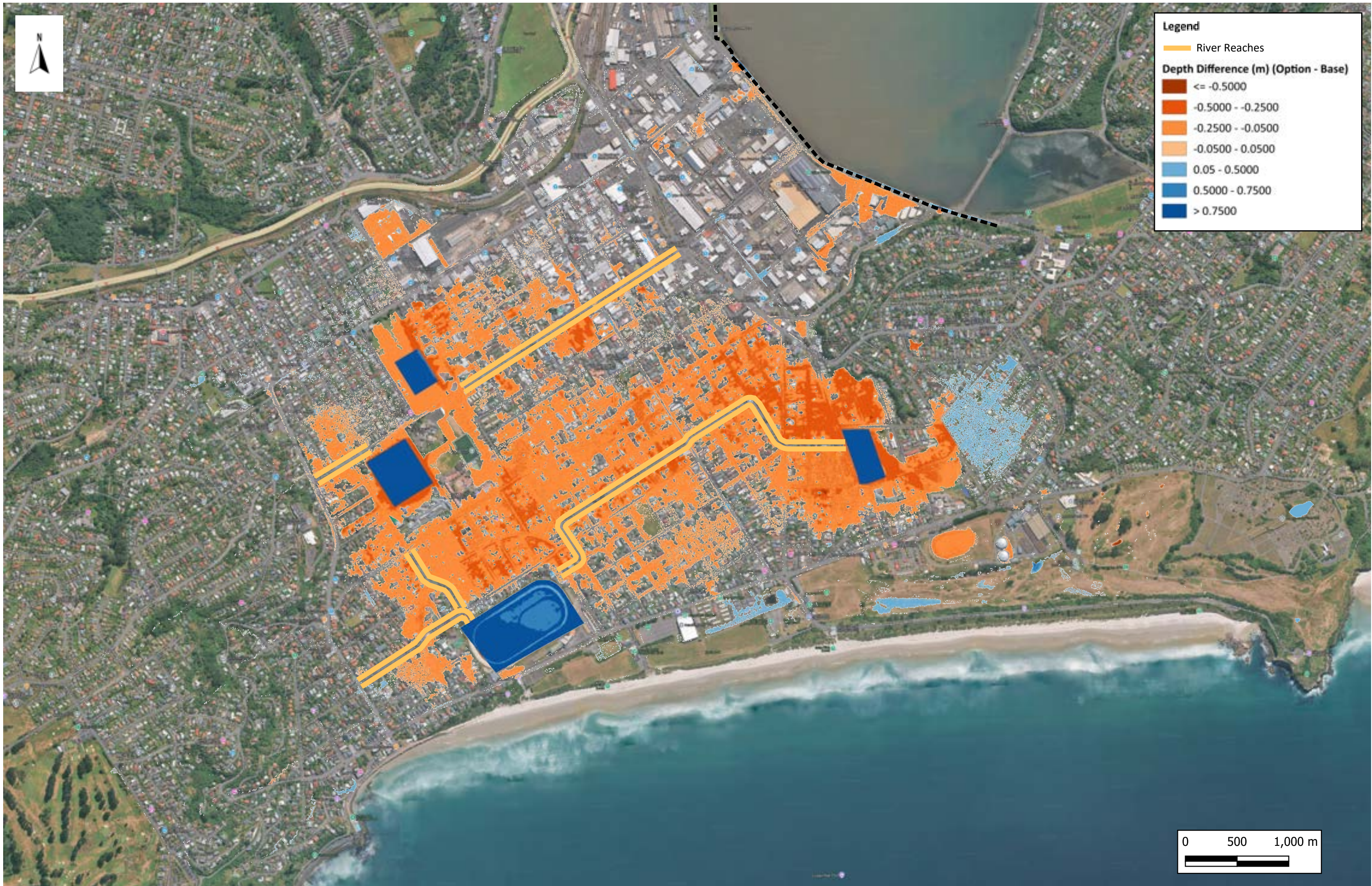
- Dark Red:  $\leq -0.5000$
- Dark Orange:  $-0.5000 - -0.2500$
- Orange:  $-0.2500 - -0.0500$
- Light Orange:  $-0.0500 - 0.0500$
- Light Blue:  $0.05 - 0.5000$
- Medium Blue:  $0.5000 - 0.7500$
- Dark Blue:  $> 0.7500$



MAP NO:	4700990 - M2
REV:	B

South Dunedin - Option 4  
 Flood Depth Difference Map Between Option 4 & Base  
 (1 in 50 Year Design Storm)

DRAWN BY:	Anvesh Ravula
DATE:	2026-05-13
CHECK BY:	Kit Pascoe
DATE:	2026-05-13
<small>Disclaimer:        This map contains data derived in part or wholly from sources other than Beca. No representations or warranties are made by Beca as to the accuracy or completeness of this information. The map is intended for distribution as a PDF document. The scale may be incorrect when printed.</small>	

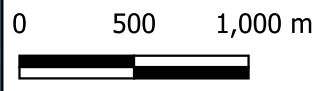


**Legend**

- River Reaches

**Depth Difference (m) (Option - Base)**

- $\le -0.5000$
- $-0.5000 - -0.2500$
- $-0.2500 - -0.0500$
- $-0.0500 - 0.0500$
- $0.05 - 0.5000$
- $0.5000 - 0.7500$
- $> 0.7500$



MAP NO: <b>4700990 - M3</b>	REV: <b>B</b>

**South Dunedin - Option 4**  
**Flood Depth Difference Map Between Option 4 & Base**  
**(1 in 100 Year Design Storm)**

DRAWN BY:	Anvesh Ravula
DATE:	2026-05-13
CHECK BY:	Kit Pascoe
DATE:	2026-05-13
<small>Disclaimer: This map contains data derived in part or wholly from sources other than Beca. No representations or warranties are made by Beca as to the accuracy or completeness of this information. The map is intended for distribution as a PDF document. The scale may be incorrect when printed.</small>	





**Legend**

- Raised Land
- Medium Density Subcatchments
- Sea Wall
- River Reaches

**Depth (m)**

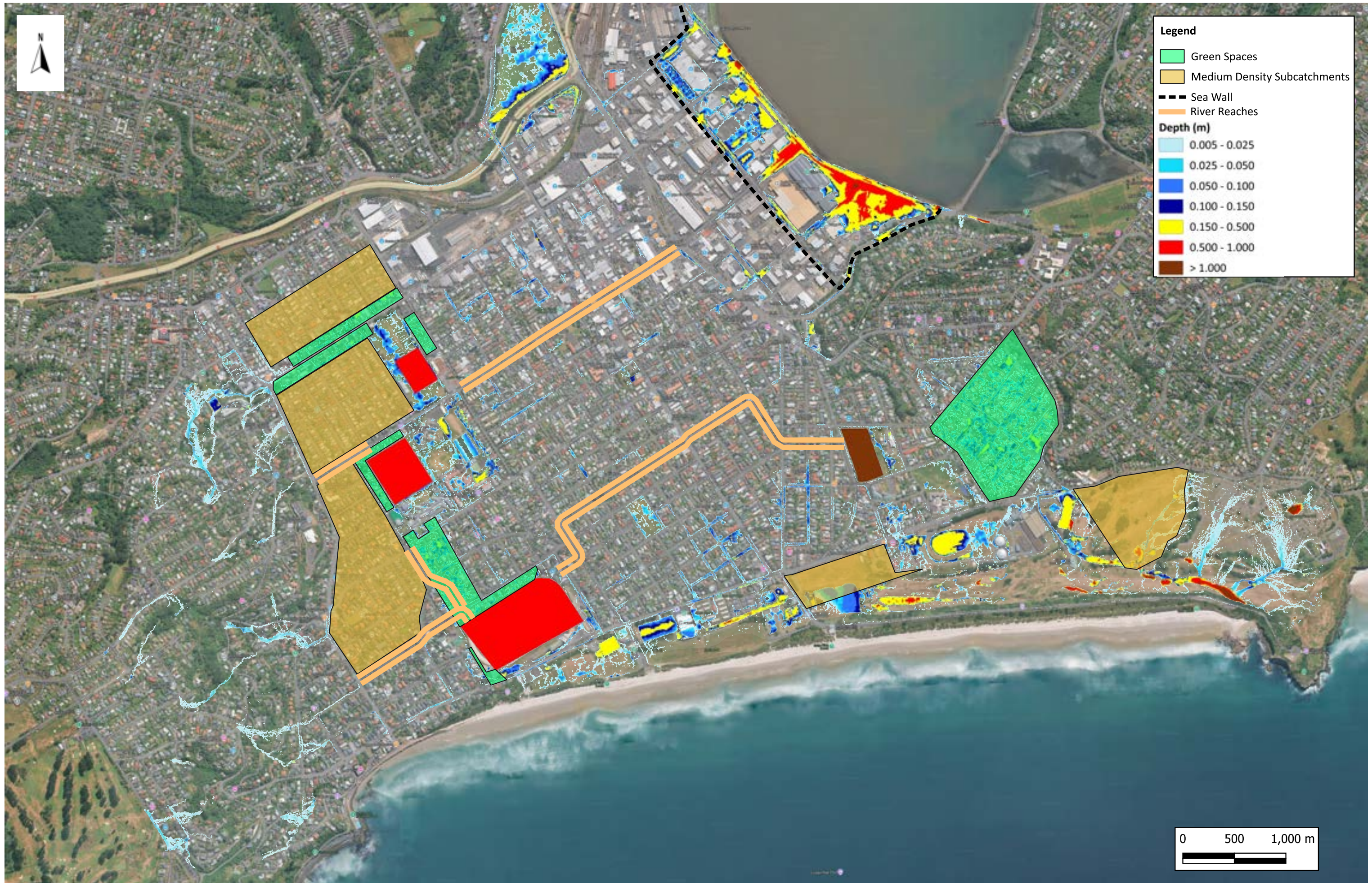
- 0.005 - 0.025
- 0.025 - 0.050
- 0.050 - 0.100
- 0.100 - 0.150
- 0.150 - 0.500
- 0.500 - 1.000
- > 1.000

MAP NO: <b>4700990 - N2</b>	REV: <b>B</b>

South Dunedin - Option 5 Medium Term  
 Maximum Flood Depth Map  
 (1 in 50 Year RCP 8.5 2060 MHWS + 0.5 m SLR)

DRAWN BY:	Anvesh Ravula
DATE:	2026-05-13
CHECK BY:	Kit Pascoe
DATE:	2026-05-13
<small>Disclaimer:          This map contains data derived in part or wholly from sources other than Beca. No representations or warranties are made by Beca as to the accuracy or completeness of this information. The map is intended for distribution as a PDF document. The scale may be incorrect when printed.</small>	





**Legend**

- Green Spaces
- Medium Density Subcatchments
- Sea Wall
- River Reaches

**Depth (m)**

- 0.005 - 0.025
- 0.025 - 0.050
- 0.050 - 0.100
- 0.100 - 0.150
- 0.150 - 0.500
- 0.500 - 1.000
- > 1.000

		REV: B
MAP NO: <b>4700990 - N4</b>		

South Dunedin - Option 5 Long Term  
 Maximum Flood Depth Map  
 (1 in 10 Year RCP 8.5 2100 MHWS + 1.1 m SLR)

DRAWN BY:	Anvesh Ravula
DATE:	2026-05-13
CHECK BY:	Kit Pascoe
DATE:	2026-05-13
<small>Disclaimer:          This map contains data derived in part or wholly from sources other than Beca. No representations or warranties are made by Beca as to the accuracy or completeness of this information. The map is intended for distribution as a PDF document. The scale may be incorrect when printed.</small>	



**Legend**

- Green Spaces
- Medium Density Subcatchments
- Sea Wall
- River Reaches

**Depth (m)**

- 0.005 - 0.025
- 0.025 - 0.050
- 0.050 - 0.100
- 0.100 - 0.150
- 0.150 - 0.500
- 0.500 - 1.000
- > 1.000

MAP NO: <b>4700990 - N5</b>	REV: <b>B</b>

**South Dunedin - Option 5 Long Term**  
**Maximum Flood Depth Map**  
 (1 in 50 Year RCP 8.5 2100 MHWS + 1.1 m SLR)

DRAWN BY:	Anvesh Ravula
DATE:	2026-05-13
CHECK BY:	Kit Pascoe
DATE:	2026-05-13
<small>Disclaimer:          This map contains data derived in part or wholly from sources other than Beca. No representations or warranties are made by Beca as to the accuracy or completeness of this information. The map is intended for distribution as a PDF document. The scale may be incorrect when printed.</small>	



**Legend**

- Green Spaces
- Medium Density Subcatchments
- Sea Wall
- River Reaches

**Depth (m)**

- 0.005 - 0.025
- 0.025 - 0.050
- 0.050 - 0.100
- 0.100 - 0.150
- 0.150 - 0.500
- 0.500 - 1.000
- > 1.000



MAP NO: <b>4700990 - N6</b>	REV: <b>B</b>

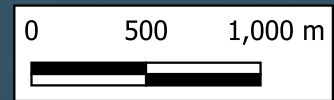
South Dunedin - Option 5 Long Term  
 Maximum Flood Depth Map  
 (1 in 100 Year RCP 8.5 2100 MHWS + 1.1 m SLR)

DRAWN BY: Anvesh Ravula	
DATE: 2026-05-13	
CHECK BY: Kit Pascoe	
DATE: 2026-05-13	
<small>Disclaimer:          This map contains data derived in part or wholly from sources other than Beca. No representations or warranties are made by Beca as to the accuracy or completeness of this information. The map is intended for distribution as a PDF document. The scale may be incorrect when printed.</small>	



**Legend**

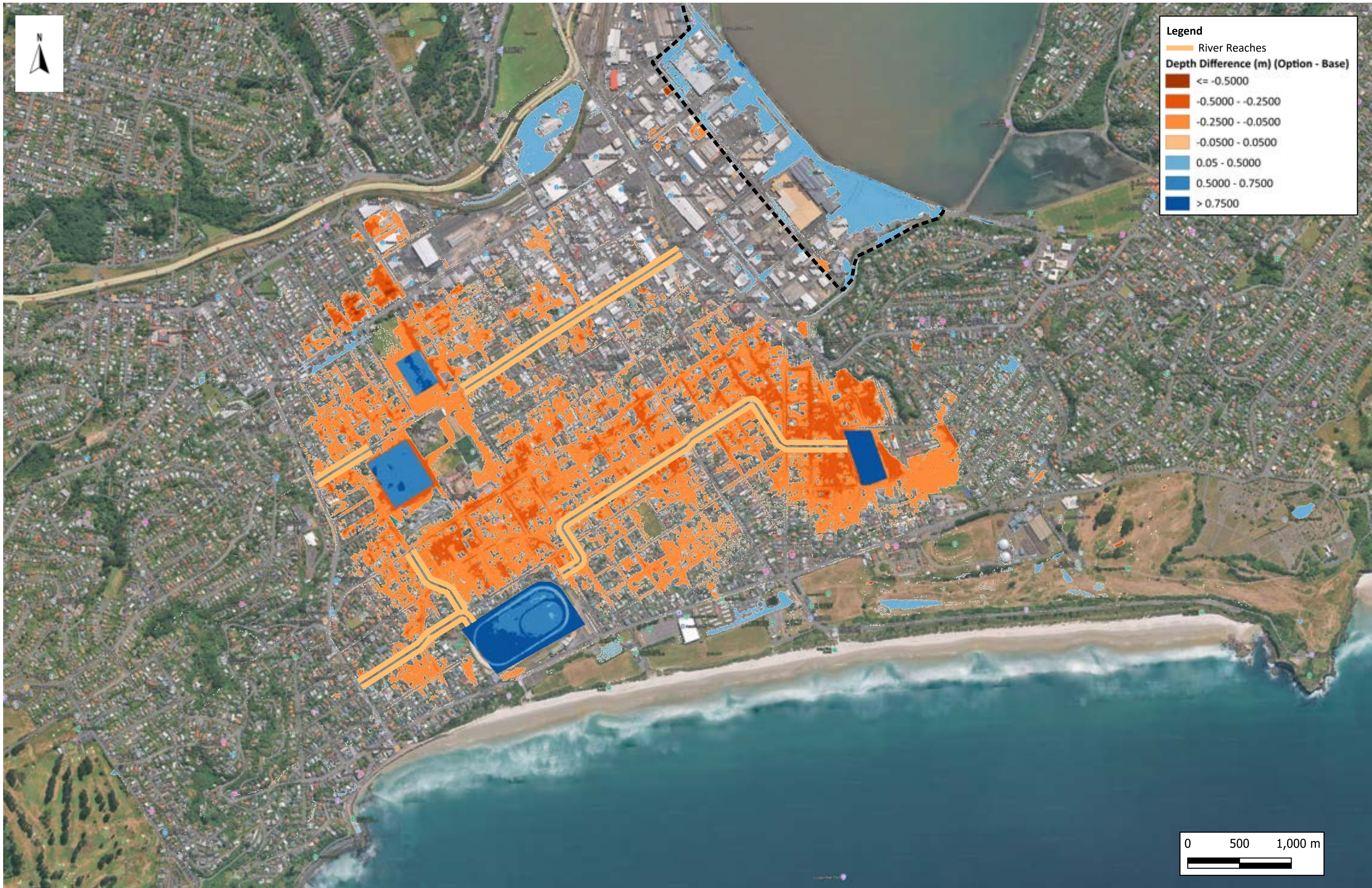
- River Reaches
- Depth Difference (m) (Option - Base)**
- <= -0.5000
- -0.5000 - -0.2500
- -0.2500 - -0.0500
- -0.0500 - 0.0500
- 0.05 - 0.5000
- 0.5000 - 0.7500
- > 0.7500



MAP NO:	4700990 - 01
REV:	B

South Dunedin - Option 5  
Flood Depth Difference Map Between Option 5 & Base  
(1 in 10 Year Design Storm)

DRAWN BY:	Anvesh Ravula
DATE:	2026-05-13
CHECK BY:	Kit Pascoe
DATE:	2026-05-13
<small>Disclaimer: This map contains data derived in part or wholly from sources other than Beca. No representations or warranties are made by Beca as to the accuracy or completeness of this information. The map is intended for distribution as a PDF document. The scale may be incorrect when printed.</small>	



**Legend**

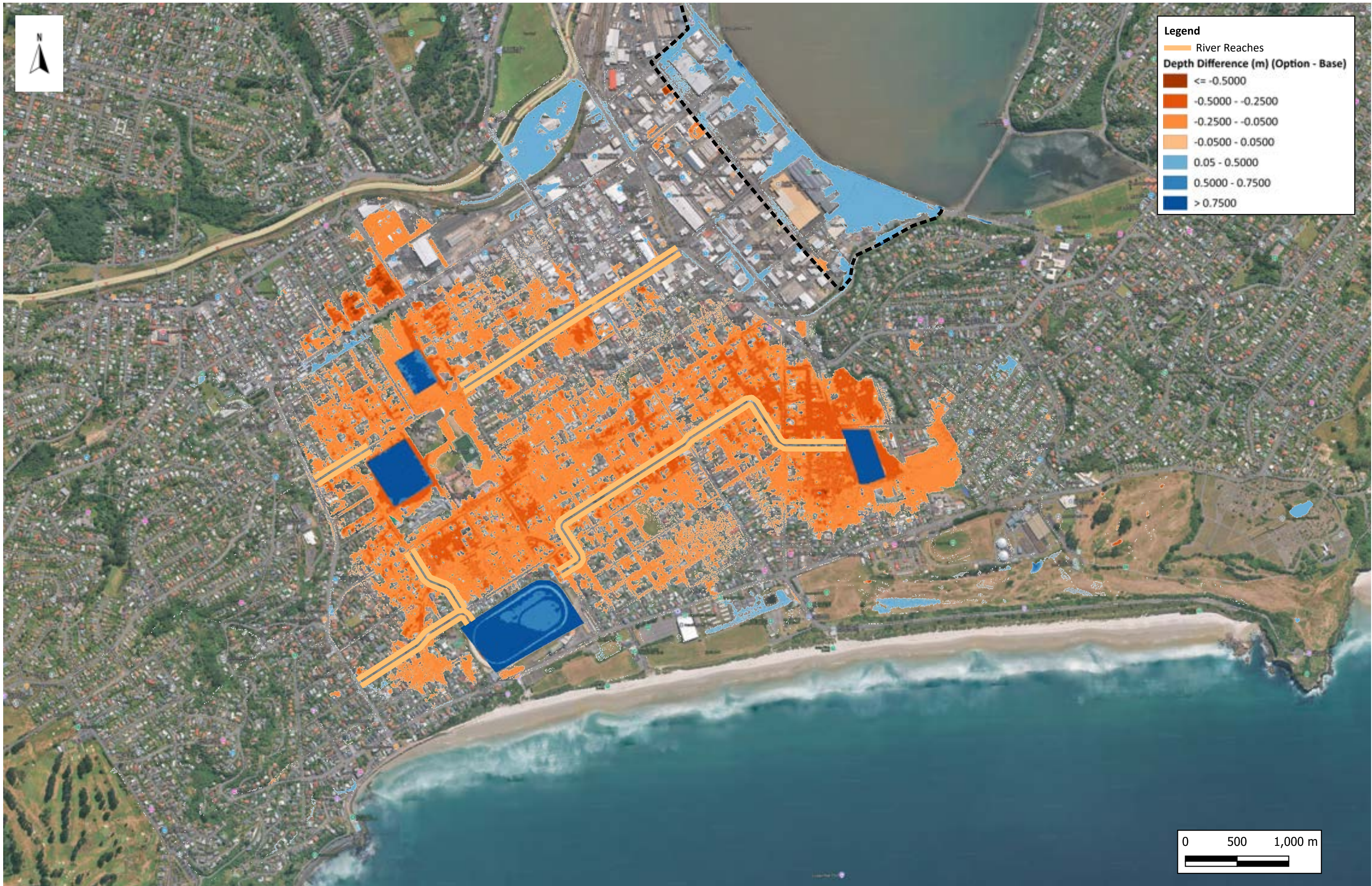
- River Reaches
- Depth Difference (m) (Option - Base)**
- $\le -0.5000$
- $-0.5000 - -0.2500$
- $-0.2500 - -0.0500$
- $-0.0500 - 0.0500$
- $0.05 - 0.5000$
- $0.5000 - 0.7500$
- $> 0.7500$



MAP NO:	4700990 - 02
REV:	B

South Dunedin - Option 5  
Flood Depth Difference Map Between Option 5 & Base  
(1 in 50 Year Design Storm)

DRAWN BY:	Anvesh Ravula
DATE:	2026-05-13
CHECK BY:	Kit Pascoe
DATE:	2026-05-13
<small>Disclaimer: This map contains data derived in part or wholly from sources other than Beca. No representations or warranties are made by Beca as to the accuracy or completeness of this information. The map is intended for distribution as a PDF document. The scale may be incorrect when printed.</small>	



**Legend**

- River Reaches
- Depth Difference (m) (Option - Base)**
- <= -0.5000
- -0.5000 - -0.2500
- -0.2500 - -0.0500
- -0.0500 - 0.0500
- 0.05 - 0.5000
- 0.5000 - 0.7500
- > 0.7500

MAP NO: <b>4700990 - 03</b>	REV: <b>B</b>

South Dunedin - Option 5  
 Flood Depth Difference Map Between Option 5 & Base  
 (1 in 100 Year Design Storm)

DRAWN BY:	Anvesh Ravula
DATE:	2026-05-13
CHECK BY:	Kit Pascoe
DATE:	2026-05-13
<small>Disclaimer: This map contains data derived in part or wholly from sources other than Beca. No representations or warranties are made by Beca as to the accuracy or completeness of this information. The map is intended for distribution as a PDF document. The scale may be incorrect when printed.</small>	



**Legend**

--- Sea Wall

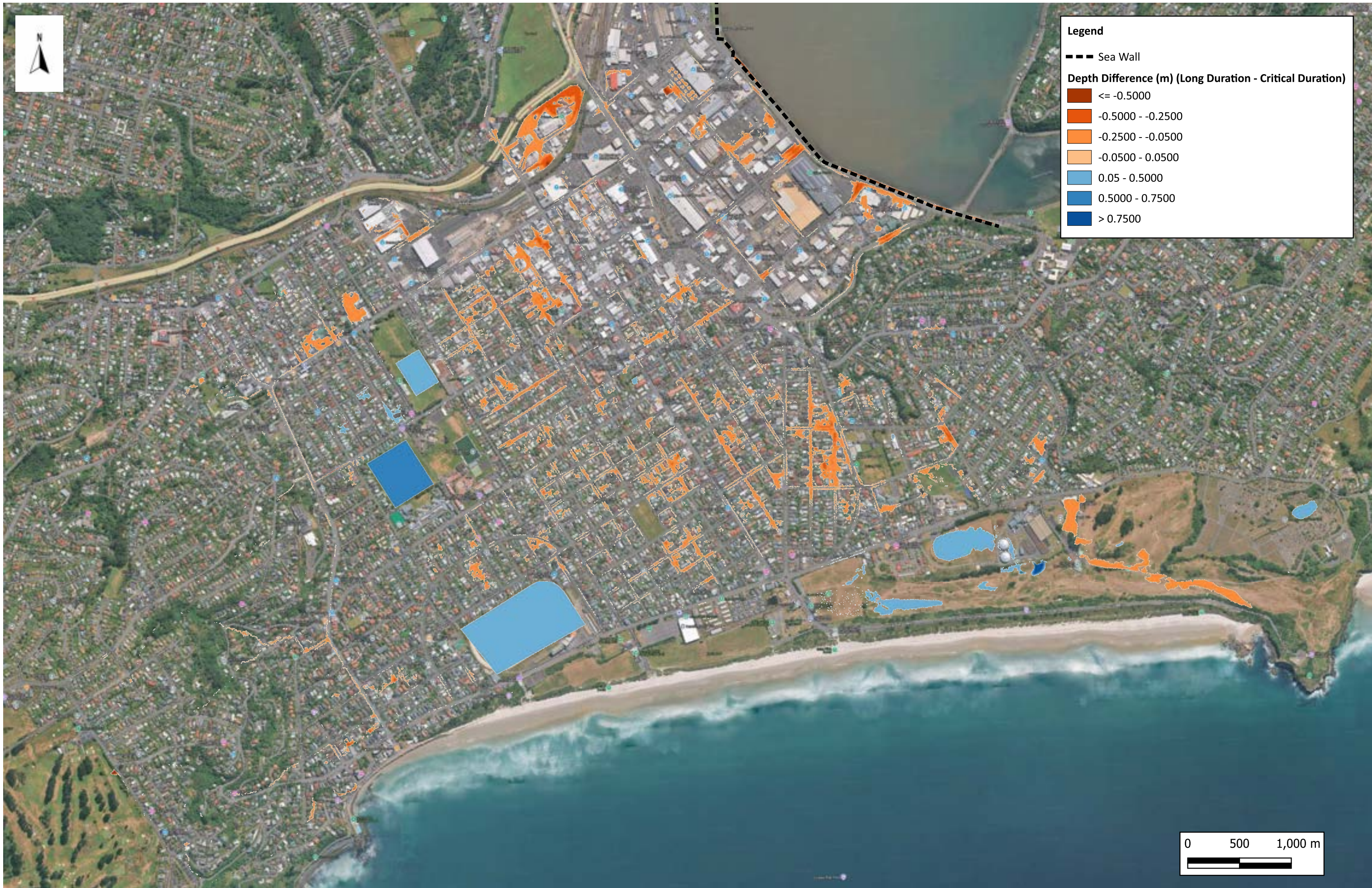
**Depth Difference (m) (Long Duration - Critical Duration)**

- <= -0.5000
- 0.5000 - -0.2500
- 0.2500 - -0.0500
- 0.0500 - 0.0500
- 0.05 - 0.5000
- 0.5000 - 0.7500
- > 0.7500

MAP NO: <b>4700990 - P1</b>	REV: <b>A</b>

South Dunedin - Option 3 Sensitivity Run 1  
 Flood Depth Difference Map Between Long Duration (24hr) & Critical  
 Duration (6hr)  
 (1 in 10 Year RCP 8.5 2100 MHWs)

DRAWN BY:	Anvesh Ravula
DATE:	2025-11-27
CHECK BY:	Kit Pascoe
DATE:	2025-11-27
<small>Disclaimer:          This map contains data derived in part or wholly from sources other than Beca. No representations or warranties are made by Beca as to the accuracy or completeness of this information. The map is intended for distribution as a PDF document. The scale may be incorrect when printed.</small>	



**Legend**

--- Sea Wall

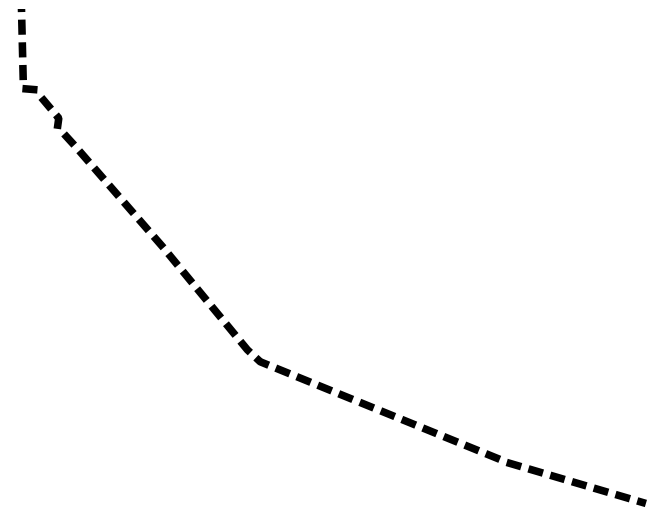
**Depth Difference (m) (Long Duration - Critical Duration)**

- <= -0.5000
- 0.5000 - -0.2500
- 0.2500 - -0.0500
- 0.0500 - 0.0500
- 0.05 - 0.5000
- 0.5000 - 0.7500
- > 0.7500

	<p><b>DUNEDIN CITY COUNCIL</b> <span style="font-size: small;">kaupapa o Dunedin</span></p>
MAP NO: <b>4700990 - P2</b>	REV: <b>A</b>

South Dunedin - Option 3 Sensitivity Run 1  
 Flood Depth Difference Map Between Long Duration (24hr) & Critical  
 Duration (6hr)  
 (1 in 50 Year RCP 8.5 2100 MHWS)

DRAWN BY: Anvesh Ravula	DATE: 2025-11-27
CHECK BY: Kit Pascoe	DATE: 2025-11-27
Disclaimer: This map contains data derived in part or wholly from sources other than Beca. No representations or warranties are made by Beca as to the accuracy or completeness of this information. The map is intended for distribution as a PDF document. The scale may be incorrect when printed.	

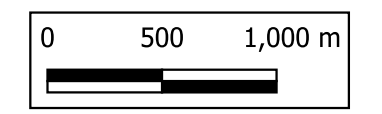


**Legend**

--- Sea Wall

**Depth Difference (m)**

- <= -0.5000
- 0.5000 - -0.2500
- 0.2500 - -0.0500
- 0.0500 - 0.0500
- 0.05 - 0.5000
- 0.5000 - 0.7500
- > 0.7500



	<p>South Dunedin - Option 3 Sensitivity Run 1          Flood Depth Difference Map Between 1 in 100 Year RCP 4.5 2100          MHWS + 0.6m SLR &amp;          Critical Duration 1 in 100 Year RCP8.5 2100 MHWS + 1.1 m SLR</p>	<table border="1" style="width: 100%; border-collapse: collapse;"> <tr><td style="font-size: small;">DRAWN BY:</td><td>Anvesh Ravula</td></tr> <tr><td style="font-size: small;">DATE:</td><td>2025-11-26</td></tr> <tr><td style="font-size: small;">CHECK BY:</td><td></td></tr> <tr><td style="font-size: small;">DATE:</td><td>2025-11-26</td></tr> <tr><td colspan="2" style="font-size: x-small;">Disclaimer: This map contains data derived in part or wholly from sources other than Beca. No representations or warranties are made by Beca as to the accuracy or completeness of this information. The map is intended for distribution as a PDF document. The scale may be incorrect when printed.</td></tr> </table>	DRAWN BY:	Anvesh Ravula	DATE:	2025-11-26	CHECK BY:		DATE:	2025-11-26	Disclaimer: This map contains data derived in part or wholly from sources other than Beca. No representations or warranties are made by Beca as to the accuracy or completeness of this information. The map is intended for distribution as a PDF document. The scale may be incorrect when printed.	
DRAWN BY:	Anvesh Ravula											
DATE:	2025-11-26											
CHECK BY:												
DATE:	2025-11-26											
Disclaimer: This map contains data derived in part or wholly from sources other than Beca. No representations or warranties are made by Beca as to the accuracy or completeness of this information. The map is intended for distribution as a PDF document. The scale may be incorrect when printed.												
<table border="1" style="width: 100%; border-collapse: collapse;"> <tr> <td style="width: 150px; font-size: small;">MAP NO:</td> <td style="font-weight: bold;">4700990 - P3</td> <td style="width: 50px; font-size: small;">REV:</td> <td style="font-weight: bold;">A</td> </tr> </table>	MAP NO:	4700990 - P3	REV:	A								
MAP NO:	4700990 - P3	REV:	A									





**Legend**

— River Reaches

**Depth Difference (m) (Long Duration - Critical Duration)**

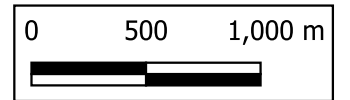
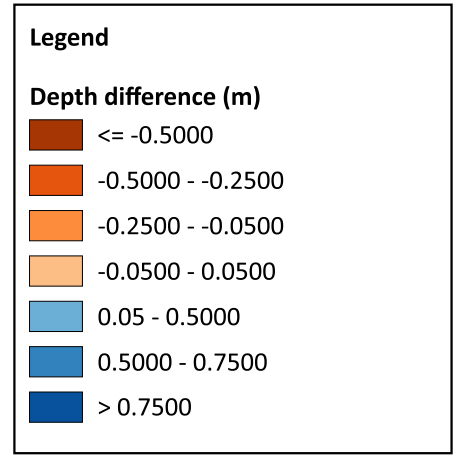
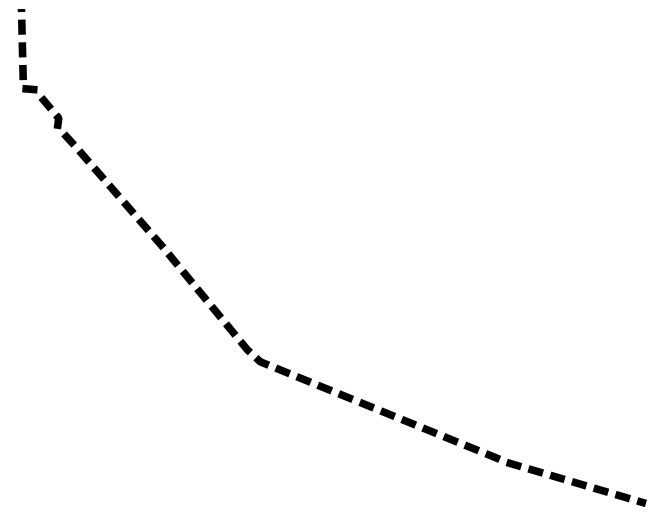
- Dark Blue:  $\leq -0.5000$
- Orange:  $-0.5000 - -0.2500$
- Light Orange:  $-0.2500 - -0.0500$
- Yellow-Orange:  $-0.0500 - 0.0500$
- Light Blue:  $0.05 - 0.5000$
- Medium Blue:  $0.5000 - 0.7500$
- Dark Blue:  $> 0.7500$



MAP NO:	4700990 - Q2
REV:	B

South Dunedin - Option 4 Sensitivity Run 1  
 Flood Depth Difference Map Between Long Duration (24hr) & Critical  
 Duration (6hr)  
 (1 in 50 Year RCP 8.5 2100 MHWS)

DRAWN BY:	Anvesh Ravula
DATE:	2026-05-13
CHECK BY:	Kit Pascoe
DATE:	2026-05-13
<small>Disclaimer:          This map contains data derived in part or wholly from sources other than Beca. No representations or warranties are made by Beca as to the accuracy or completeness of this information. The map is intended for distribution as a PDF document. The scale may be incorrect when printed.</small>	

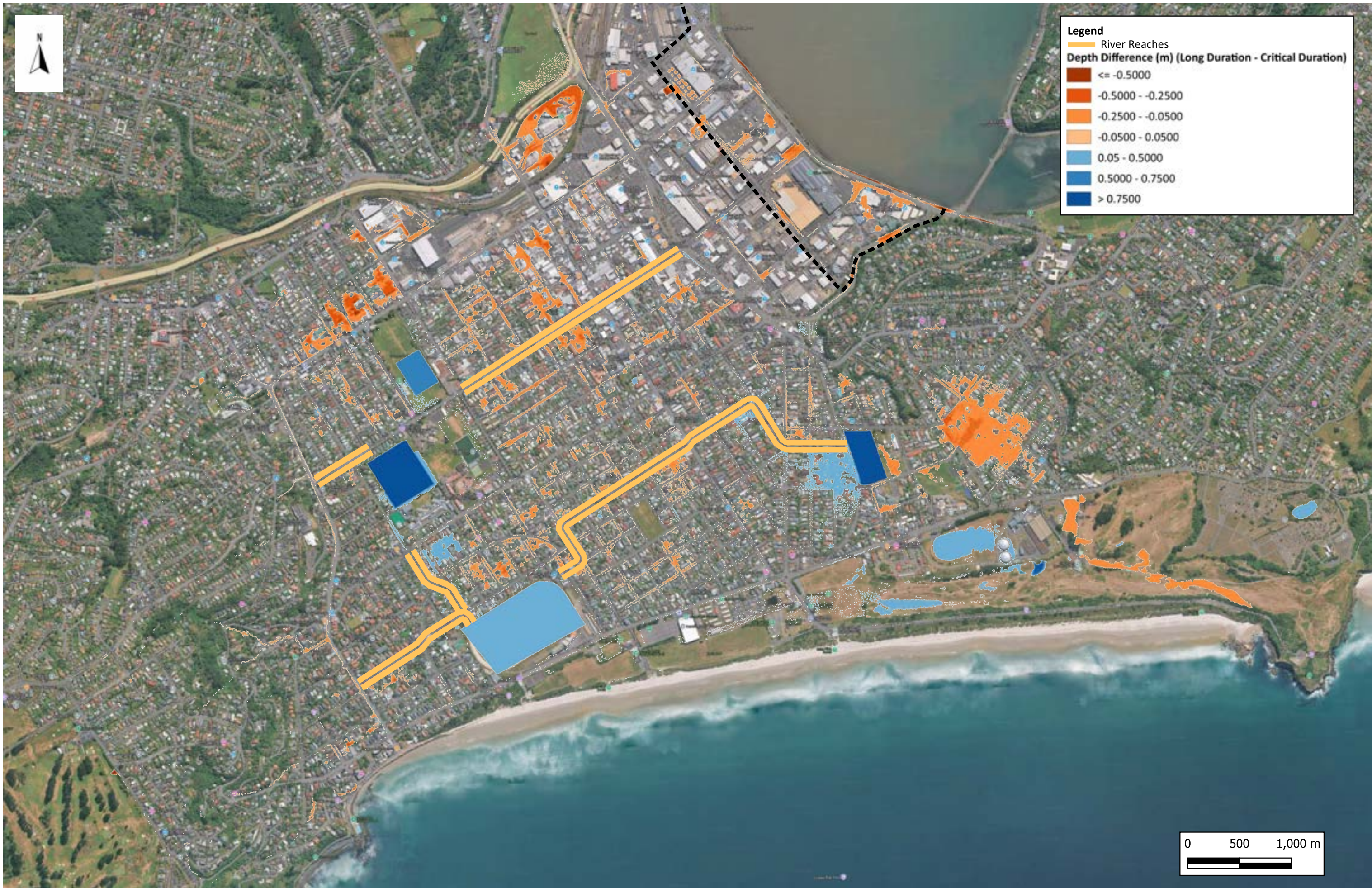


MAP NO: <b>4700990 - Q3</b>		REV: <b>A</b>
-----------------------------	--	---------------

South Dunedin - Option 4 Sensitivity Run 1  
 Flood Depth Difference Map Between 1 in 100 Year RCP 4.5 2100  
 MHWS + 0.6m SLR &  
 Critical Duration 1 in 100 Year RCP8.5 2100 MHWS + 1.1 m SLR

DRAWN BY:	Anvesh Ravula
DATE:	2025-11-27
CHECK BY:	
DATE:	2025-11-27
<small>Disclaimer:          This map contains data derived in part or wholly from sources other than Beca. No representations or warranties are made by Beca as to the accuracy or completeness of this information. The map is intended for distribution as a PDF document. The scale may be incorrect when printed.</small>	





**Legend**

— River Reaches

**Depth Difference (m) (Long Duration - Critical Duration)**

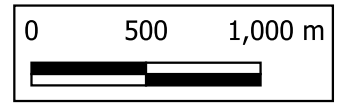
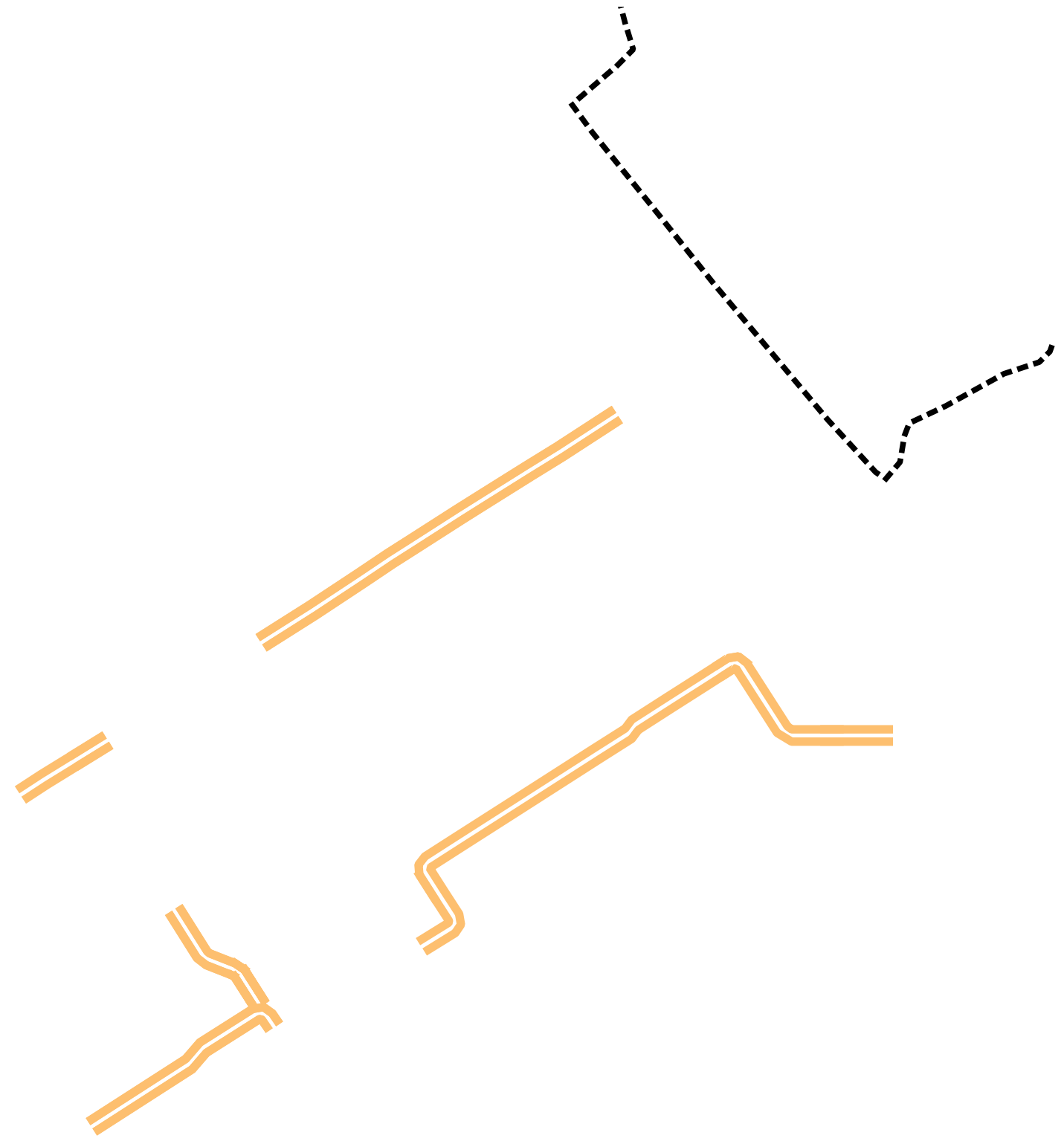
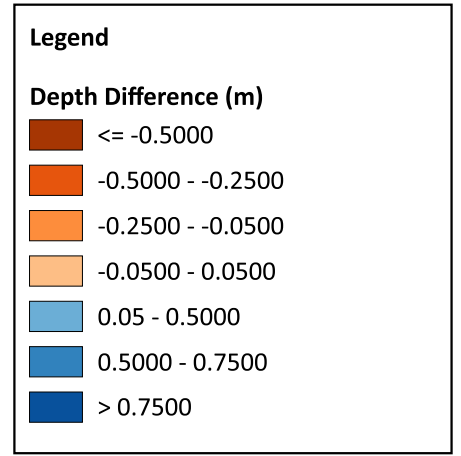
- Dark Blue:  $\leq -0.5000$
- Orange:  $-0.5000 - -0.2500$
- Light Orange:  $-0.2500 - -0.0500$
- Yellow-Orange:  $-0.0500 - 0.0500$
- Light Blue:  $0.05 - 0.5000$
- Medium Blue:  $0.5000 - 0.7500$
- Dark Blue:  $> 0.7500$



MAP NO:	4700990 - R2
REV:	B

South Dunedin - Option 5 Sensitivity Run 1  
 Flood Depth Difference Map Between Long Duration (24hr) & Critical  
 Duration (6hr)  
 (1 in 50 Year RCP 8.5 2100 MHWs)

DRAWN BY:	Anvesh Ravula
DATE:	2026-05-13
CHECK BY:	Kit Pascoe
DATE:	2026-05-13
<small>Disclaimer:        This map contains data derived in part or wholly from sources other than Beca. No representations or warranties are made by Beca as to the accuracy or completeness of this information. The map is intended for distribution as a PDF document. The scale may be incorrect when printed.</small>	



MAP NO:	<b>4700990 - R3</b>	REV:	<b>A</b>
---------	---------------------	------	----------

South Dunedin - Option 5 Sensitivity Run 1  
 Flood Depth Difference Map Between 1 in 100 Year RCP 4.5 2100  
 MHWS + 0.6m SLR &  
 Critical Duration 1 in 100 Year RCP8.5 2100 MHWS + 1.1 m SLR

DRAWN BY:	Anvesh Ravula
DATE:	2025-11-27
CHECK BY:	
DATE:	2025-11-27
<small>Disclaimer:          This map contains data derived in part or wholly from sources other than Beca. No representations or warranties are made by Beca as to the accuracy or completeness of this information. The map is intended for distribution as a PDF document. The scale may be incorrect when printed.</small>	