

Appendix A

Proposed Bus Hub Design Plans



C	DRAWING UPDATED	AJS	GM	22.06.17
B	DRAWING UPDATED	JK	GM	28.04.17
A	FOR INFORMATION	JK	GM	12.04.17
No.	Revision	By	Chk	Appd

Drawing Originator:



Original Scale (A1)	1:250	Design	-	Approved For Construction*	-
Reduced Scale (A3)	1:500	Drawn	AJS	30.03.17	Date
		Dwg Verifier			
		Dwg Check			
		* Refer to Revision 1 for Original Signature			

Client:



Project:

DUNEDIN BUS HUB
GREAT KING STREET

Title:

PROPOSED DESIGNATION
PLAN
SHEET 1 OF 2

Discipline:

CIVIL ENGINEERING

Drawing No. 3810322-CE-K010

Rev. C

FOR INFORMATION
NOT FOR CONSTRUCTION

PRELIMINARY
NOT FOR CONSTRUCTION



FOR INFORMATION
NOT FOR CONSTRUCTION

PRELIMINARY
NOT FOR CONSTRUCTION

B	DRAWING UPDATED	JK	GM	28.04.17	
A	FOR INFORMATION	JK	GM	12.04.17	
No.	Revision	By	Chk	Appd	Date

Drawing Originator:

Beca **DESIGN BRAND**

Original Scale (A1)	Design	-	-	Approved For Construction*
1:250	Drawn	AJS	30.03.17	
Reduced Scale (A3)	Dwg Verifier			Date
1:500	Dwg Check			
	* Refer to Revision 1 for Original Signature			

Client:

Otago Regional Council

Project:

DUNEDIN BUS HUB
GREAT KING STREET

Title:

PROPOSED DESIGNATION
PLAN
SHEET 2 OF 2

Discipline	CIVIL ENGINEERING
Drawing No.	3810322-CE-K011
Rev.	B

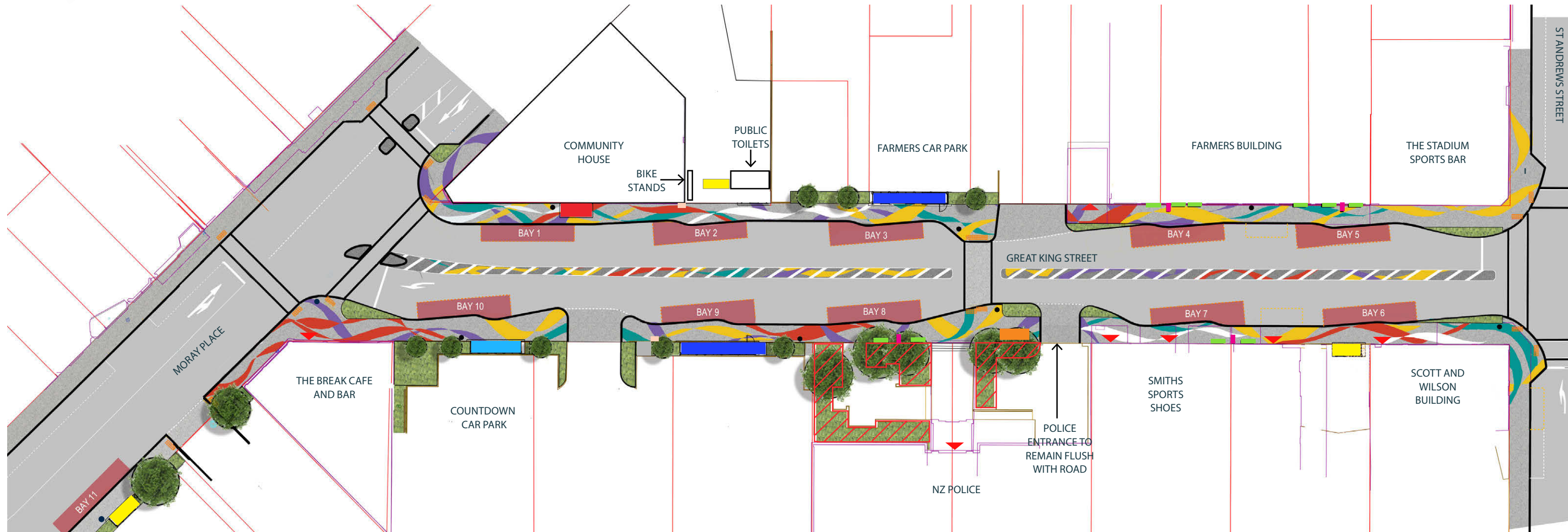


APPENDIX C

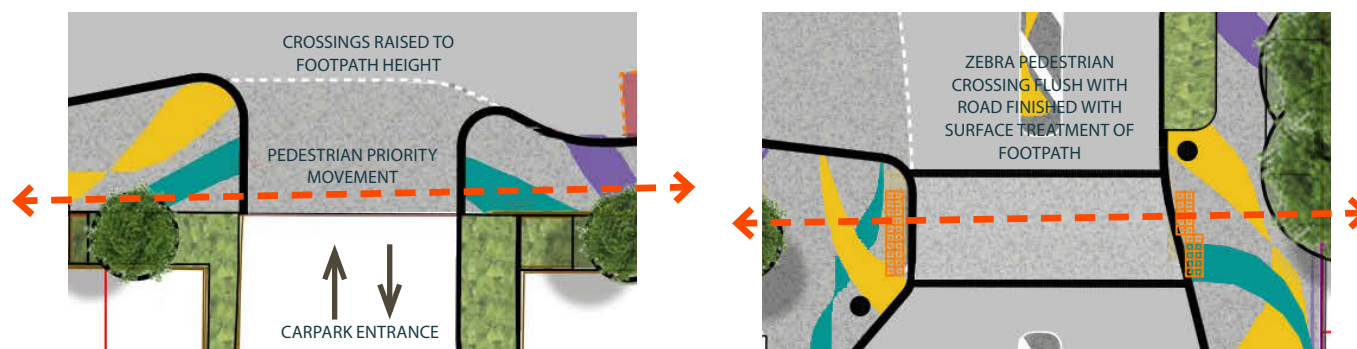
Preliminary Design Plans, prepared by
Beca



NOT TO SCALE



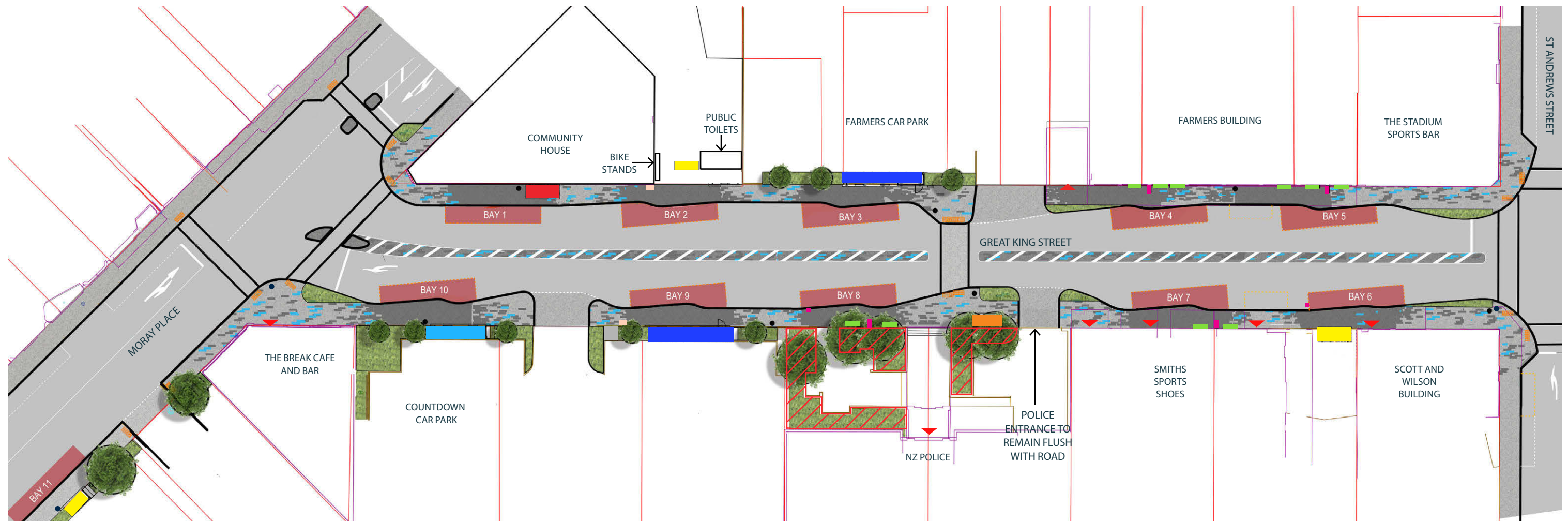
CIRCULATION AT CONFLICT POINTS



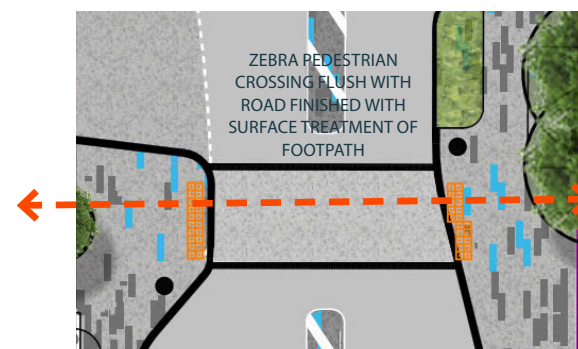
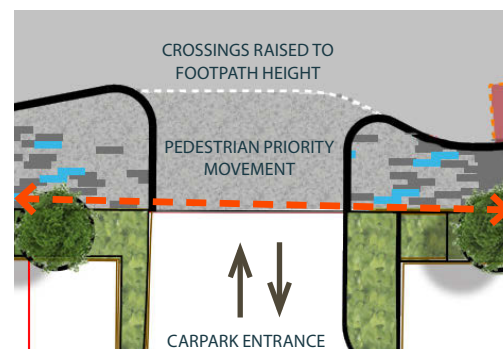
- BUS SHELTERS AND FURNITURE**
- Cantilever triple stop with Cafe retail*
 - Double Cantilever with front wall screens
 - Double Cantilever with no cover front screens
 - Single Cantilever with no cover front screens
 - Single Cantilever with front wall screens
 - Timber seating elements
 - ▲ Entry points to buildings
 - Existing planting
 - Proposed planting
 - Bus Bay Totem Pole to front end of bus bay
 - Recycling bin beside cafe shelters
 - Rubbish bin at crossings and intersections
 - Tactile pavers for pedestrian crossing points



NOT TO SCALE



CIRCULATION AT CONFLICT POINTS



BUS SHELTERS AND FURNITURE

- Cantilever triple stop with Cafe retail*
- Double Cantilever with front wall screens
- Double Cantilever with no cover front screens
- Single Cantilever with no cover front screens
- Single Cantilever with front wall screens
- Timber seating elements
- ▲ Entry points to buildings
- Existing planting
- Proposed planting
- Bus Bay Totem Pole to front end of bus bay
- Recycling bin beside cafe shelters
- Rubbish bin at crossings and intersections
- Tactile pavers for pedestrian crossing points



APPENDIX D

Dunedin Shelters Suite – Preliminary
Design Phase, prepared by Beca

Dunedin Shelter Suite Preliminary Design Phase

Copyright © 2016 Designbrand Ltd. All rights reserved.

DUNEDIN BUS HUB



DESIGNBRAND

 **Beca**



Single Shelter

Cantilever arm assembly provides the main structural support for all shelters.



Dunedin Icon - aligned with bus "head stop", this acts as visual cue for bus drivers and passengers and is used as a unifying feature in items of "Bus Hub" public furniture.

Integrated "smart technology" interactive display

- now mounted in rear screen wall to provide better through flow for tight footpaths.

Pocket glazing for glass allows for easy glass replacement.

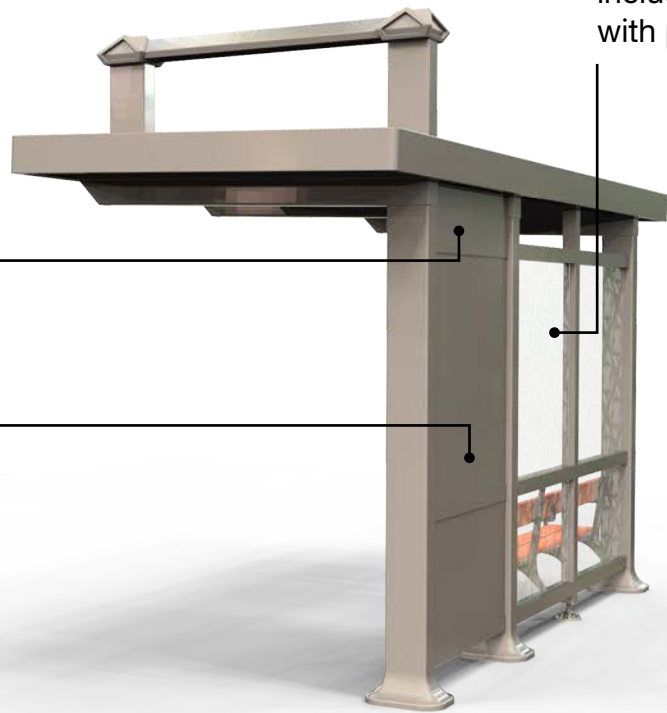
Anti-graffiti film applied to both sides of glass. Can be clear or could include digital printing with pattern or local art.

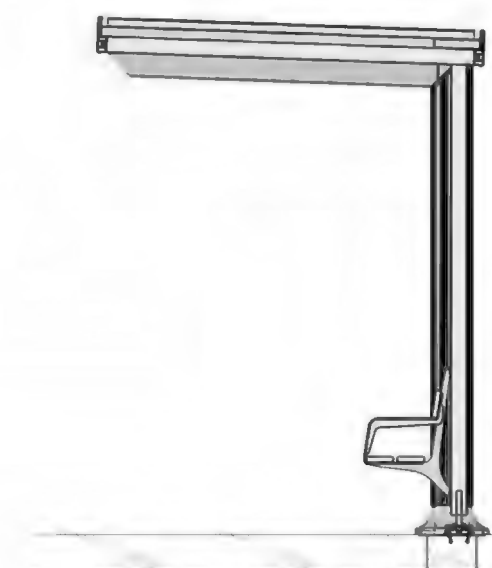
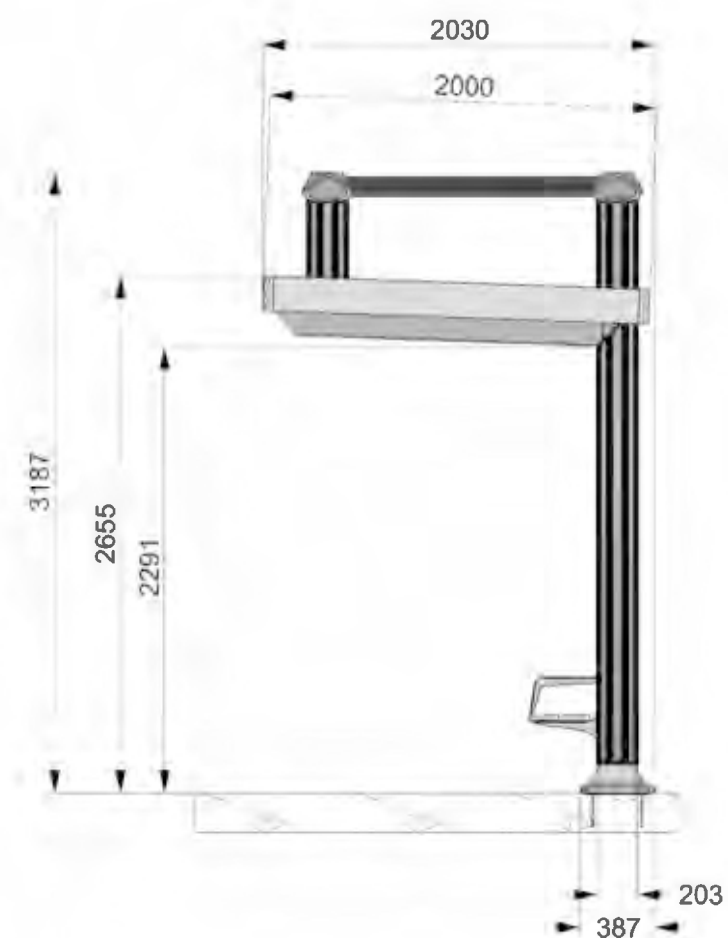
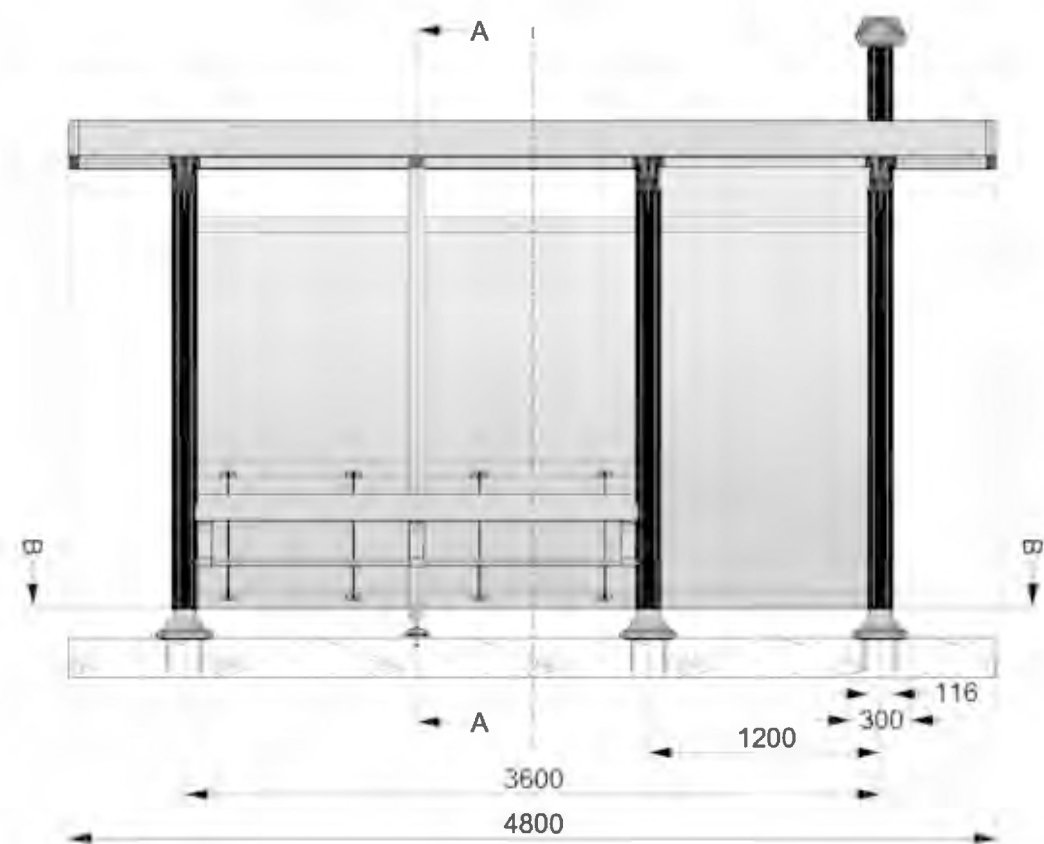
Shelter can be configured with integrated Bench or Leaner Seats



Secure access to Battery Box housing (for solar installations)

Secure service access to interactive display from back of shelter.





SECTION AA

Single Shelter - Full Cover

1500 configuration shown (Largest Size), can also be manufactured with 1300 and 800 side screens and reduced canopy to suite.



Bus Stop ID and location signage attached to Roof Fascia leading edge.

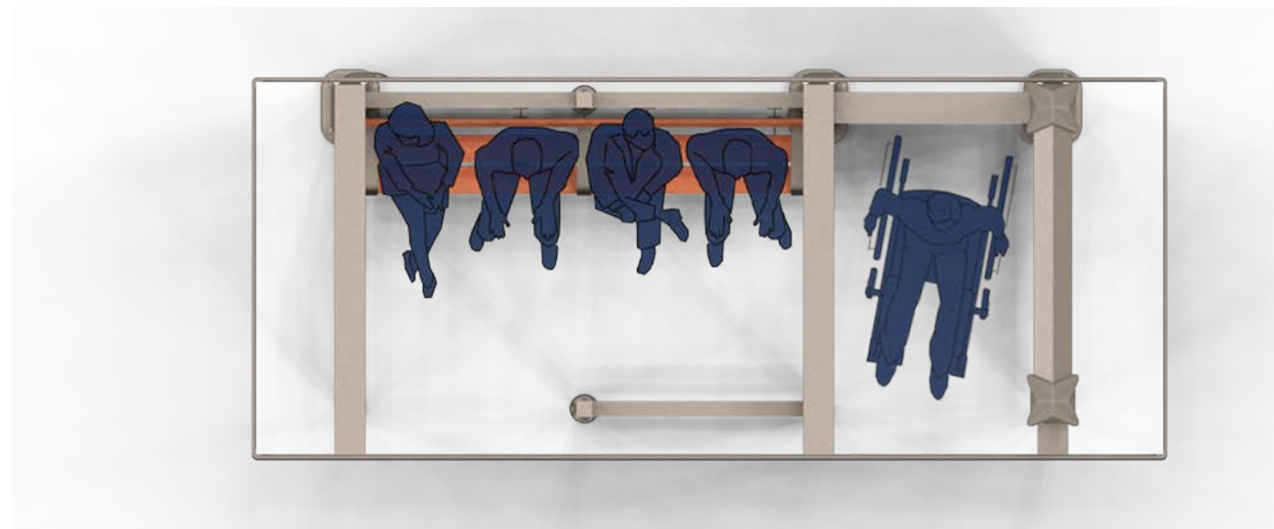
Potential to remove the need for additional pole mounted street clutter.

Cantilever arm assembly provides the main structural support for all shelters.

CPTED safety principles observed for visibility and flow through shelter.

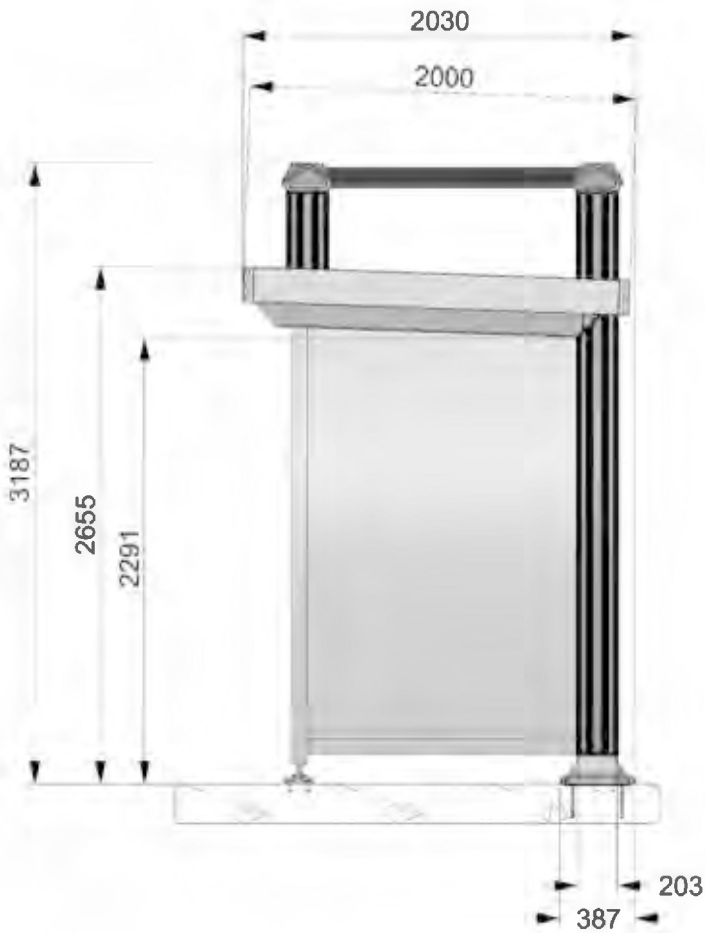
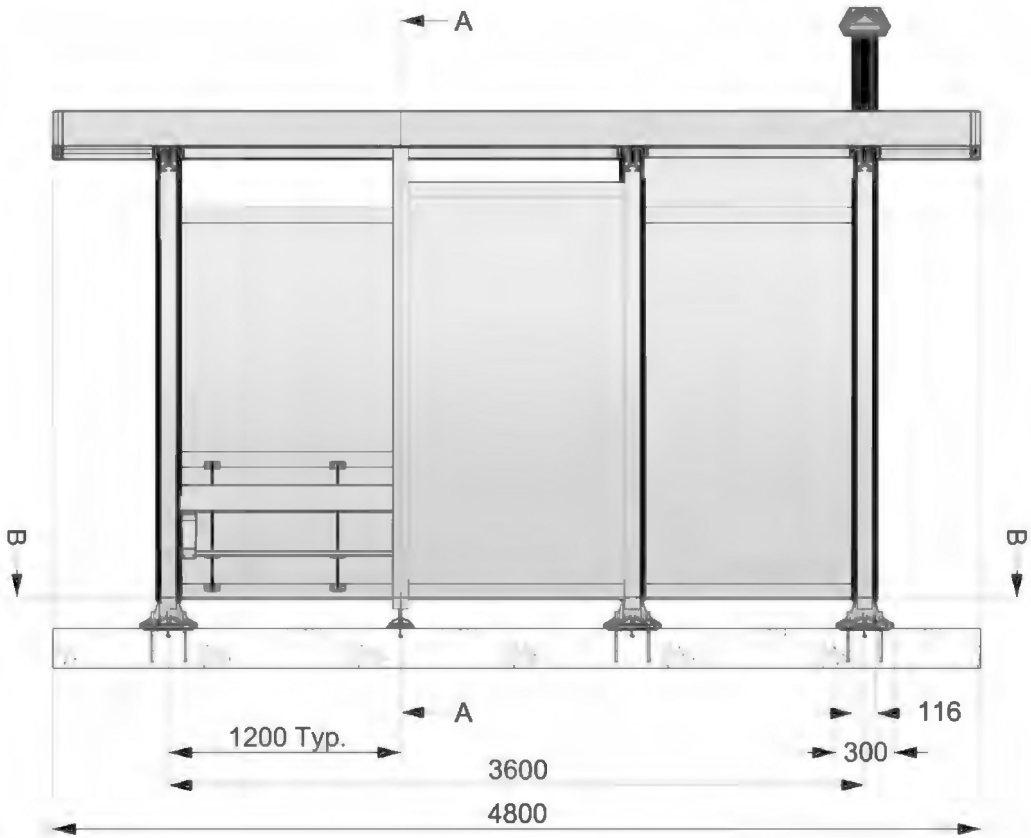
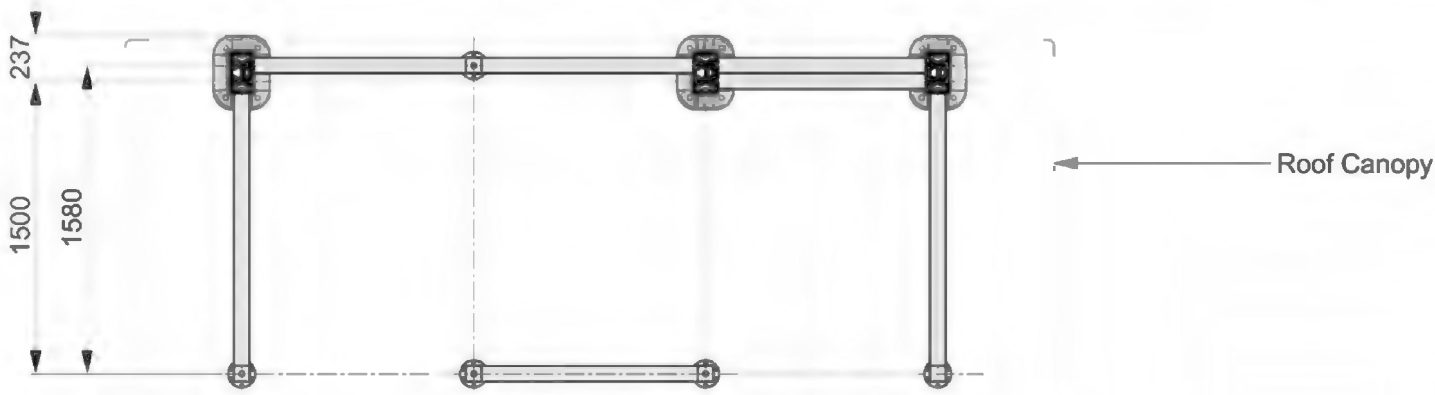
Double sided RTPI screen integrated into arrival side screen wall.

Shelter integrated Bench Seats with arm rests.



Side and front screen walls can be added to Cantilever Shelter to provide "full cover".

ISSUE	DESCRIPTION	DRAWN	CHECKED	APPROVED	DATE
A	Initial release.				2016-07-01



SECTION AA

<div>DESIGN BRAND</div>	4 - 10 Mohuia Crescent ELSDON - PORIRUA www.designbrand.co.nz	CLIENT Otago Regional Council	PROJECT Dunedin Shelter Suite	MATERIAL	N/A	DESCRIPTION Dunedin CANTILEVER SINGLE 1500 - Full Shelter Configuration		ISSUE
				FINISH	N/A		SIZE	A3
				COLOUR	N/A	PART/DRAWING NUMBER	Untitled	SCALE

Double Shelter

16-11-2016

Cantilever arm assembly provides the main structural support for all shelters.



Dunedin Icon - aligned with bus "head stop", this acts as visual cue for bus drivers and passengers and is used as a unifying feature in items of "Bus Hub" public furniture.

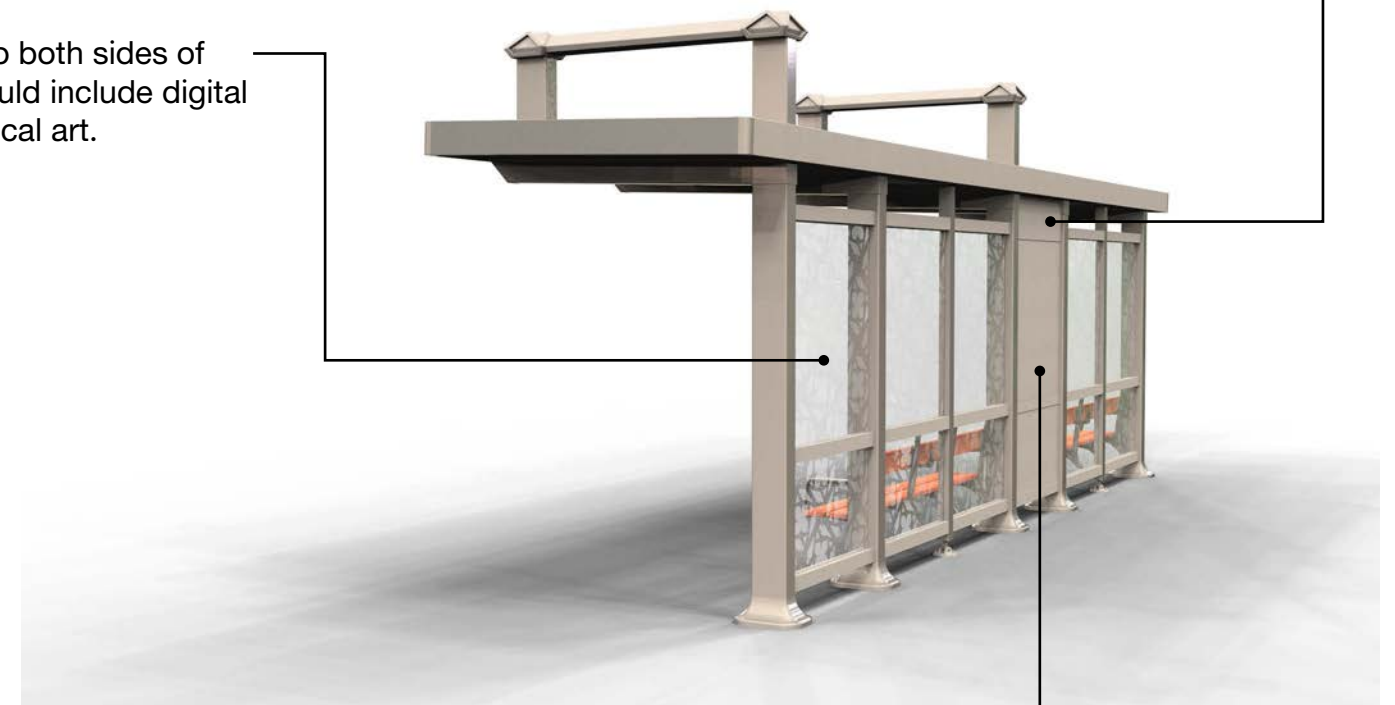
Integrated "smart technology" interactive display unit - now mounted in rear screen wall to provide better through flow for tight footpaths.

Shelter can be configured with integrated Bench or Leaner Seats (can be tailored to suite site requirements)

Anti-graffiti film applied to both sides of glass. Can be clear or could include digital printing with pattern or local art.



Secure access to Battery Box housing (for solar installations)



Secure service access to interactive display from back of shelter.

Copyright © 2016 Designbrand Ltd. All rights reserved.

DUNEDIN BUS HUB

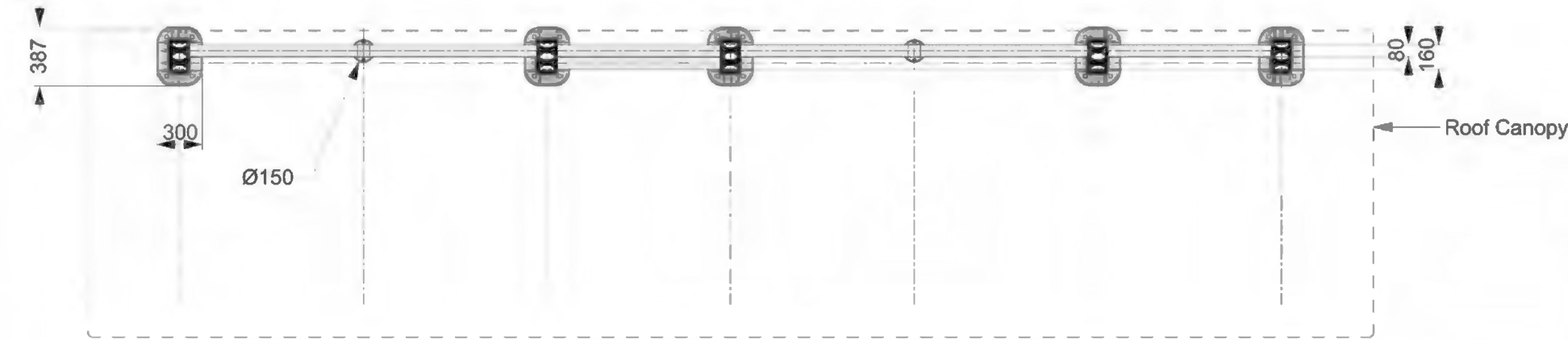


DESIGNBRAND

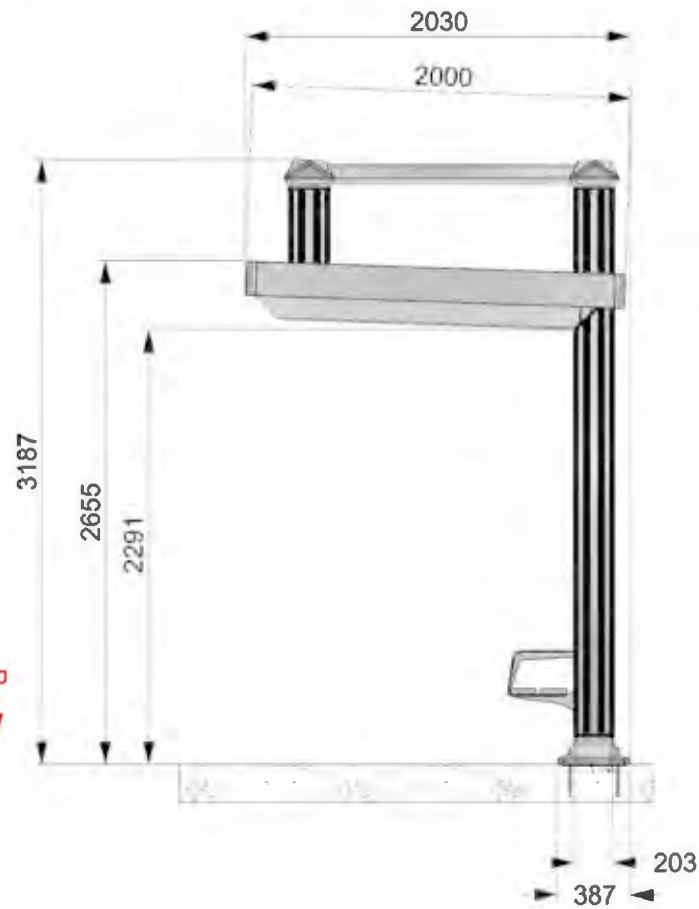
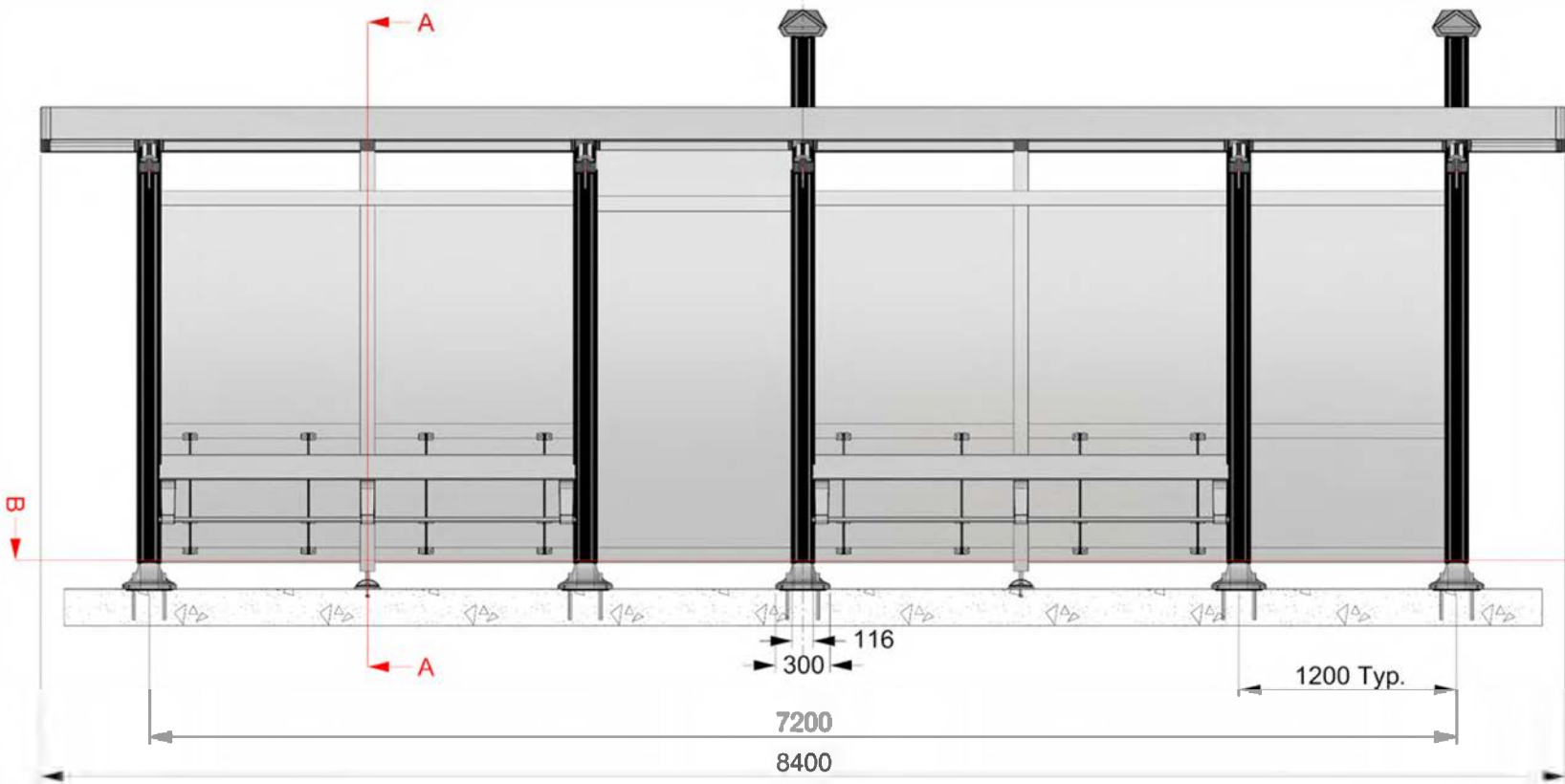
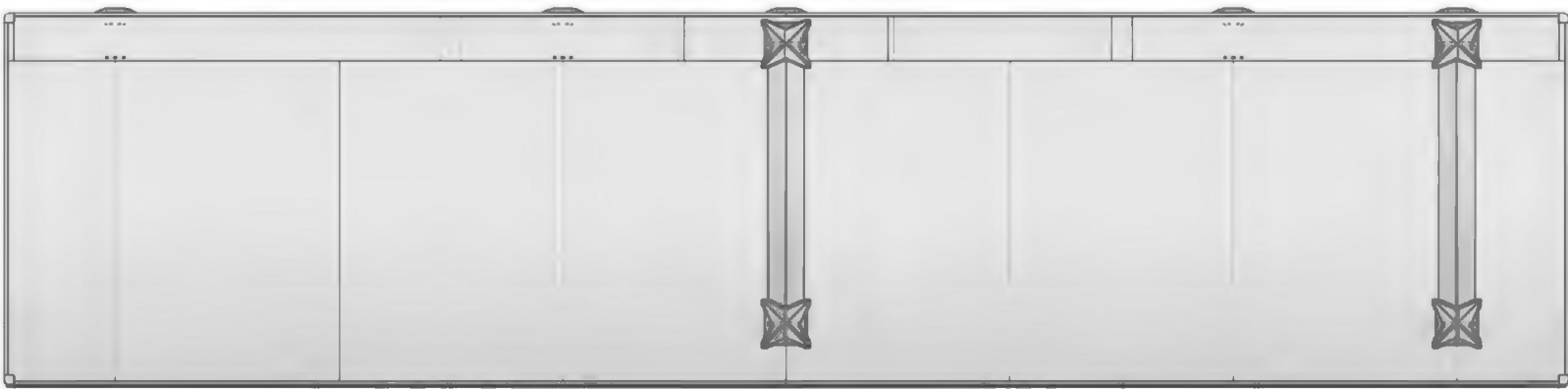
Beca



ISSUE	DESCRIPTION	DRAWN	CHECKED	APPROVED	DATE
A	Initial release.	-	-	-	2016-07-01



SECTION BB - FLOOR PLAN



SECTION AA

Double Shelter - Full Cover

1500 configuration shown (Largest Size), can also be manufactured with 1300 and 800 side screens and reduced canopy to suite site.



Bus Stop "ID", location signage attached to Roof Fascia leading edge. Potential to remove the need for additional pole mounted street clutter.

Cantilever arm assembly provides the main structural support for all shelters.

CPTED safety principles observed for visibility and flow through shelter.

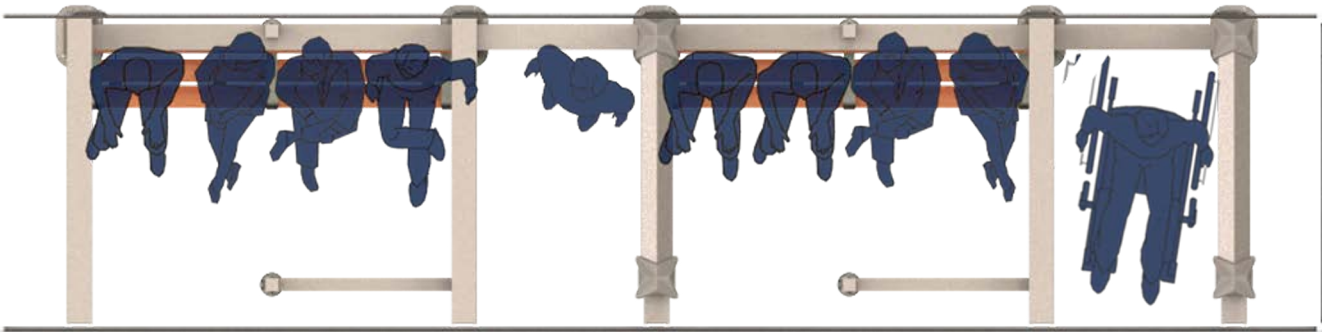
Pocket glazing for glass allows for easy glass replacement.

Anti-graffiti film applied to both sides of glass. Can be clear or could include digital printing with pattern or local art.

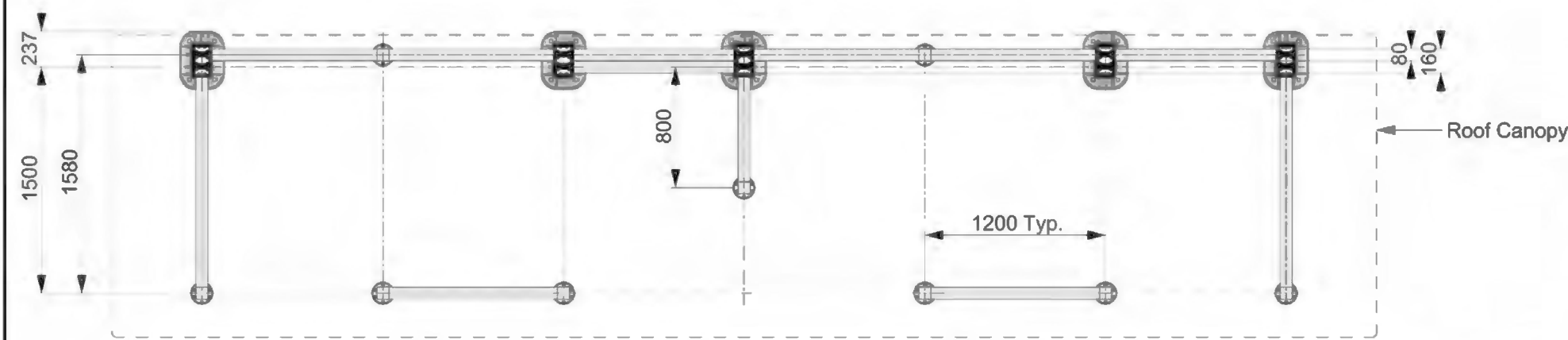
Double sided RTPI screen integrated into arrival side screen wall.

Shelter integrated Bench Seats with arm rests.

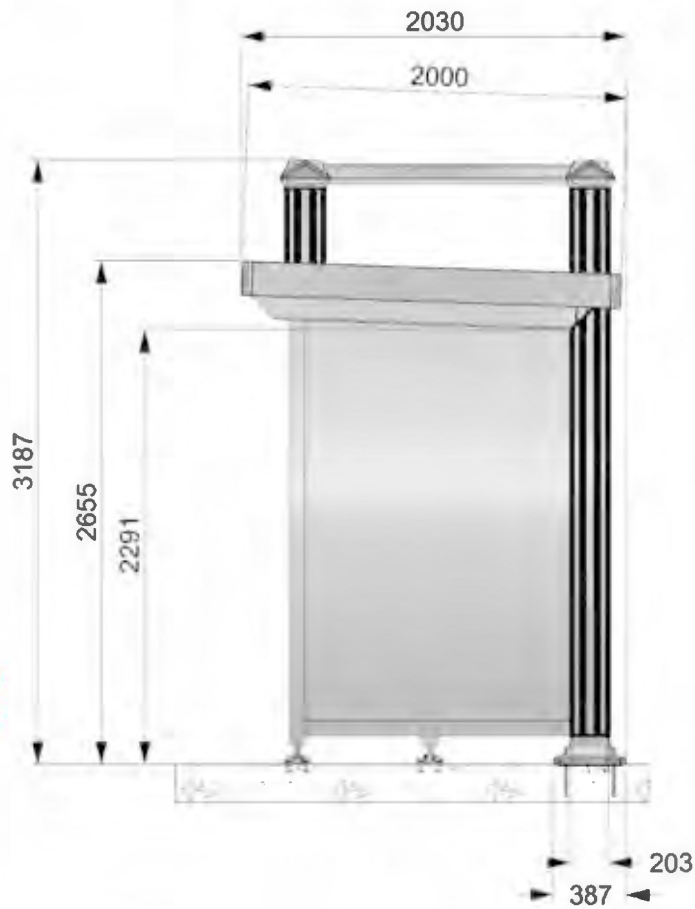
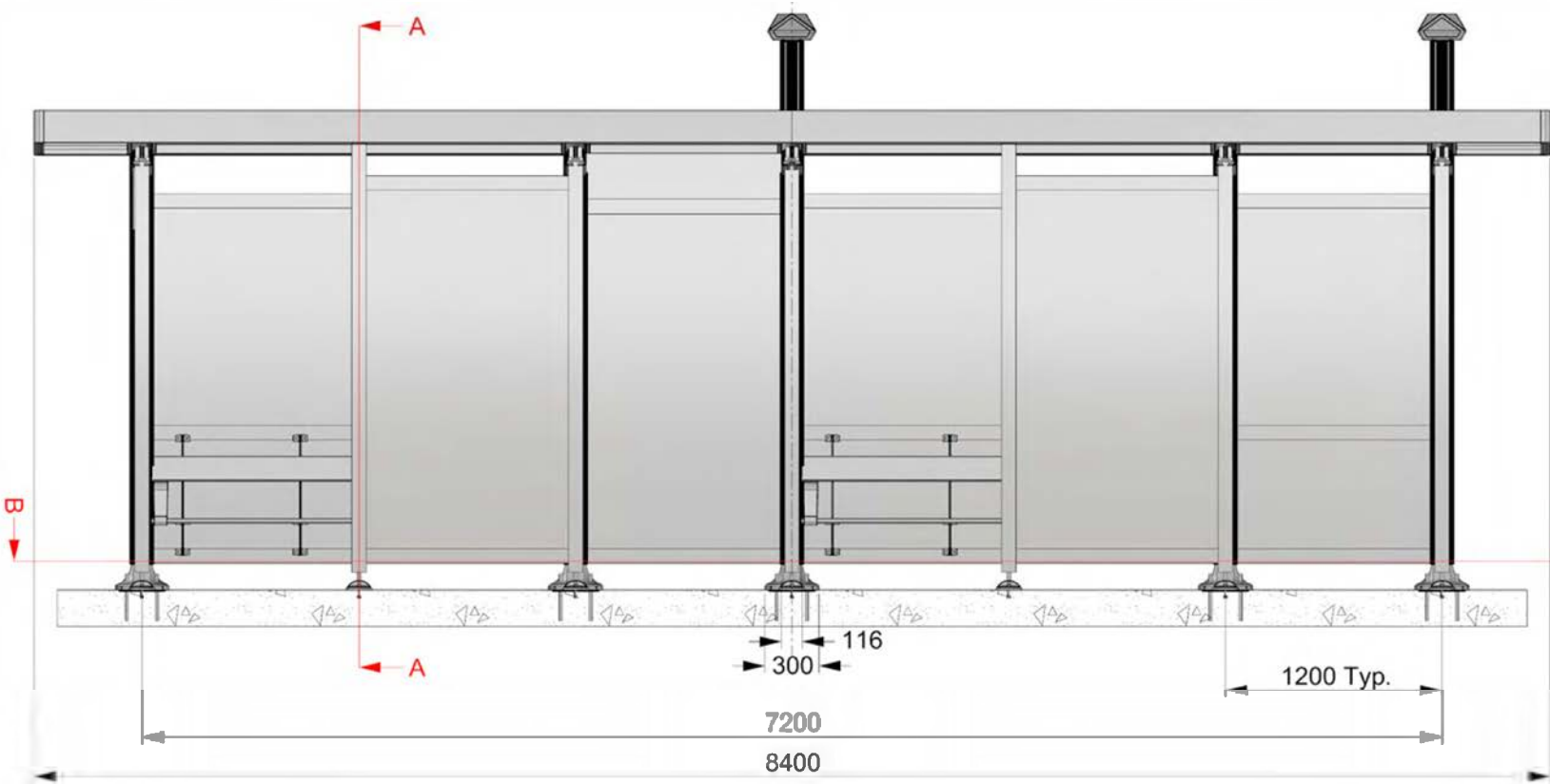
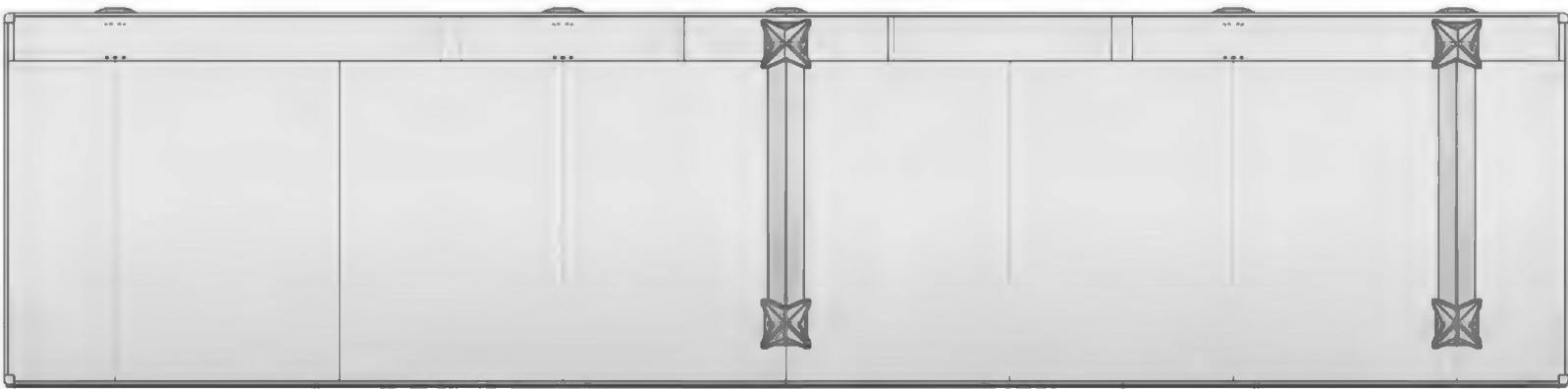
Side and front screen walls can be added to Cantilever Shelter to provide "full cover".



ISSUE	DESCRIPTION	DRAWN	CHECKED	APPROVED	DATE
A	Initial release.	-	-	-	2016-07-01



SECTION BB - FLOOR PLAN



SECTION AA

<div>DESIGN BRAND</div>	4 - 10 Mohuia Crescent ELSDON - PORIRUA www.designbrand.co.nz	CLIENT Otago Regional Council	PROJECT Dunedin Shelter Suite	MATERIAL	N/A	DESCRIPTION Dunedin CANTILEVER DOUBLE 1500 - Full Shelter Configuration		ISSUE A
				FINISH	N/A		SIZE	
				COLOUR	N/A	PART/DRAWING NUMBER	Untitled	SCALE

Triple Shelter - With Retail Module

Contextual Renders



Cafe service from street side or departure end of shelter.

Retail Module on elevated pad with raised floor.

Location for retail module branding on Slat Panel wall.

Clear and unobstructed view from bus approach side of shelter.

Staff access to retail space behind shelter.



Kerb side.



Access door behind shelter

Cafe service from street side or departure end of shelter.

Triple Shelter - With Retail Module

Functional Requirements

Building

- Weather tight
- Security (Alarm system, CCTV)
- Aluminium security shutters (hand operated or electric)
- Access door
- Serving window
- Floor surface – easy cleaning and comfortable for long periods of standing.
- Ventilation – Heating and Cooling

Electrical

- Power & Data
- Lighting – ambient and task/work lighting

Plumbing

- Water (cold water in)
- Waste (water out)

Furniture, Joinery & Appliances

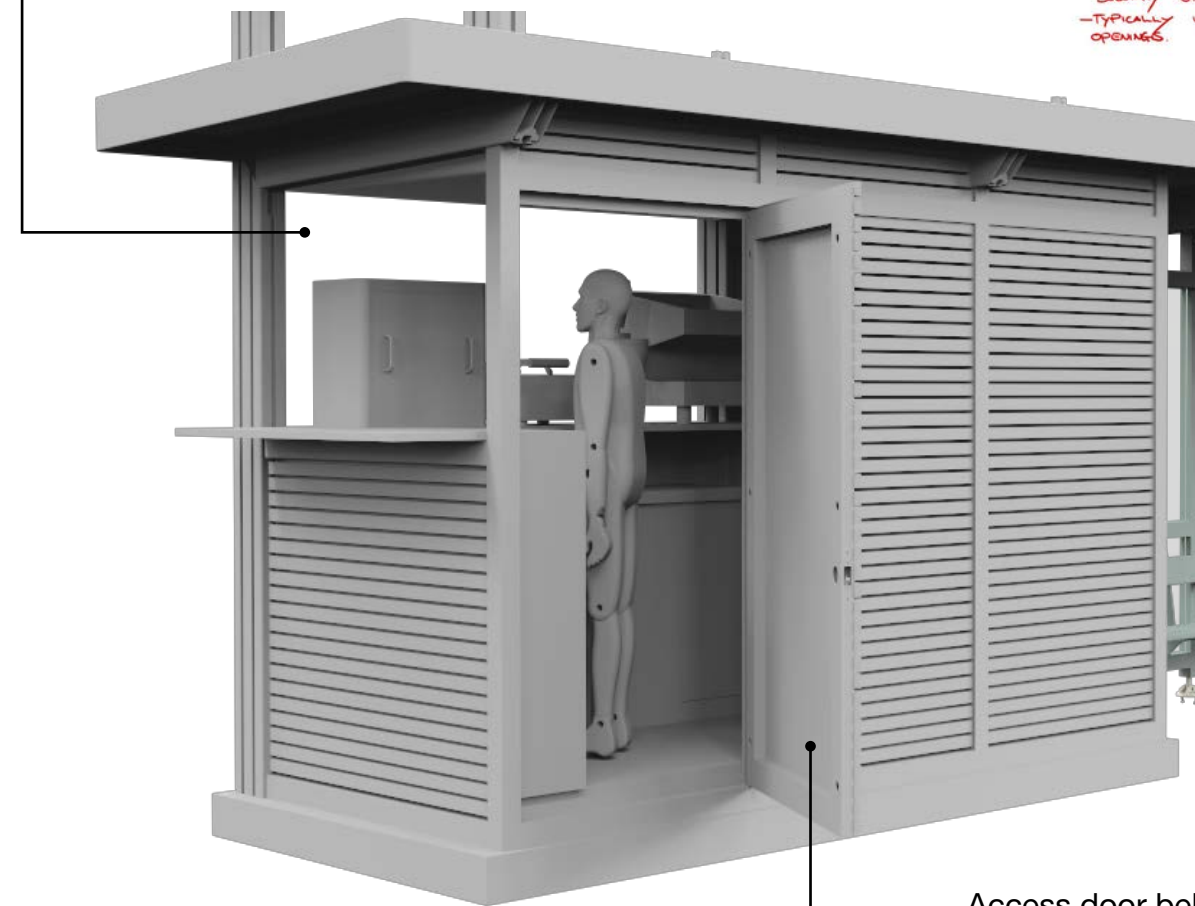
- Work surface
- Cupboards or storage spaces
- Rubbish bin
- Coffee dump box (ground coffee waste bin)
- Fire extinguisher
- Small sink (prep and cleaning)
- EFTPOS
- Cash drawer
- Coffee Grinder
- Under sink electric hot water unit (5-10l, primarily for cleaning)
- Espresso Machine – Commercial 3 group (although could possibly be a smaller 2 group)
- Pie warmer (small with solid back)
- Under-counter Fridge (preferably sliding door)
- Microwave
- Panini/contact grill (optional for heating cabinet food)

Roller shutters - secure serving hatches when Cafe is closed and hidden under shelter Canopy when Cafe is open.



ELECTRIC ROLLING SHUTTERS
(PREFERABLY INTERNALLY MOUNTED)

FOLDING (HORIZONTALLY)
SECURITY SHUTTERS.
-TYPICALLY USED FOR CURVED
OPENINGS.



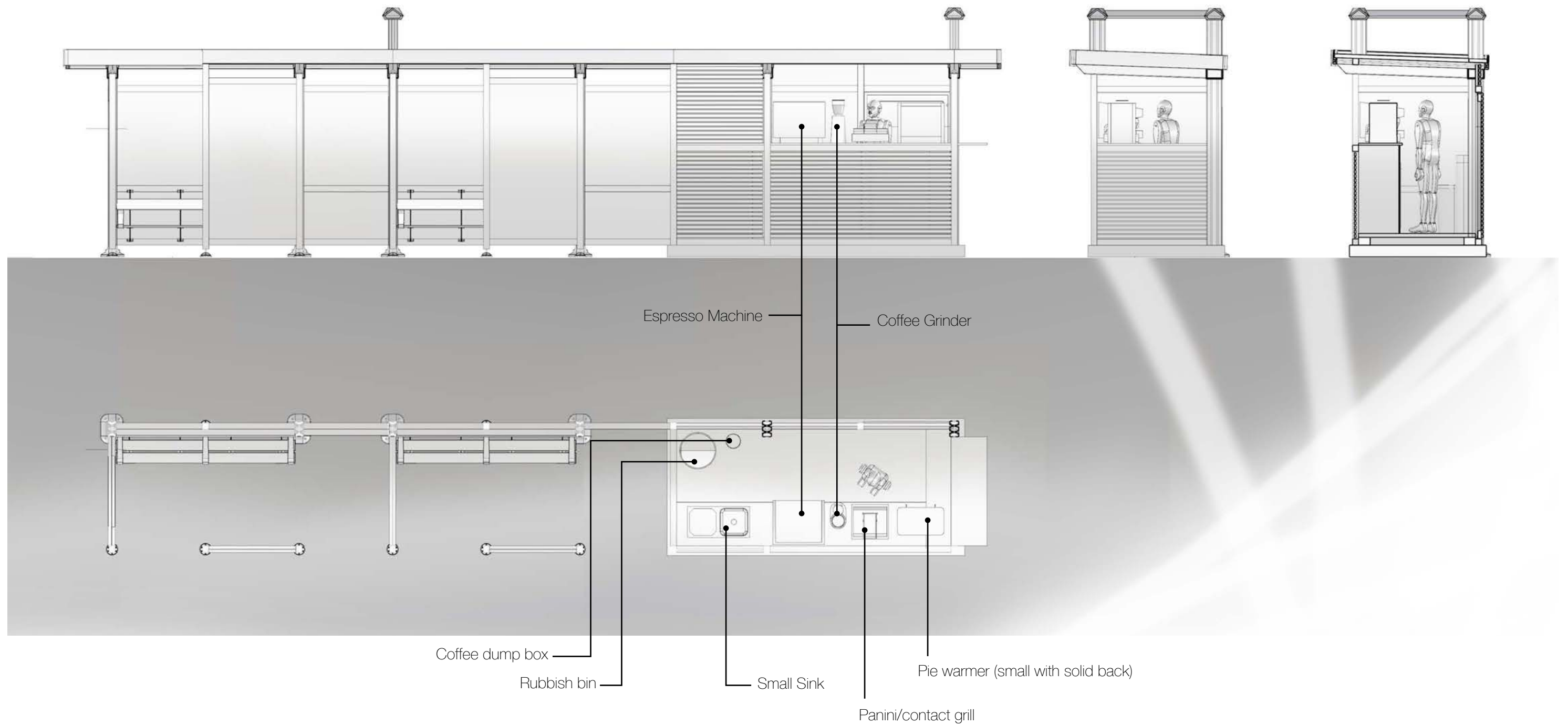
Access door behind shelter



Triple Shelter - With Retail Module

16-11-2016

Cafe Plan - Volumetric Study



Copyright © 2016 Designbrand Ltd. All rights reserved.

DUNEDIN BUS HUB

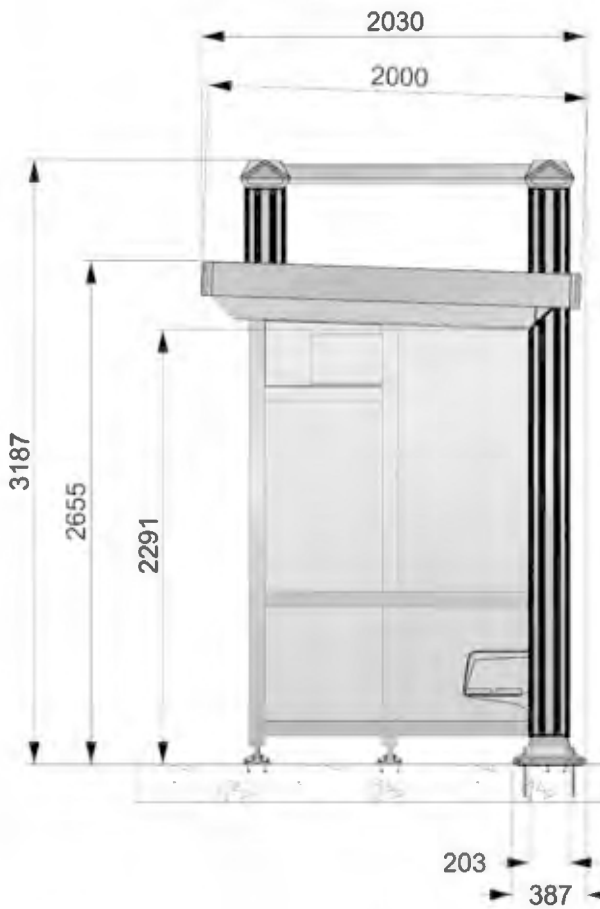
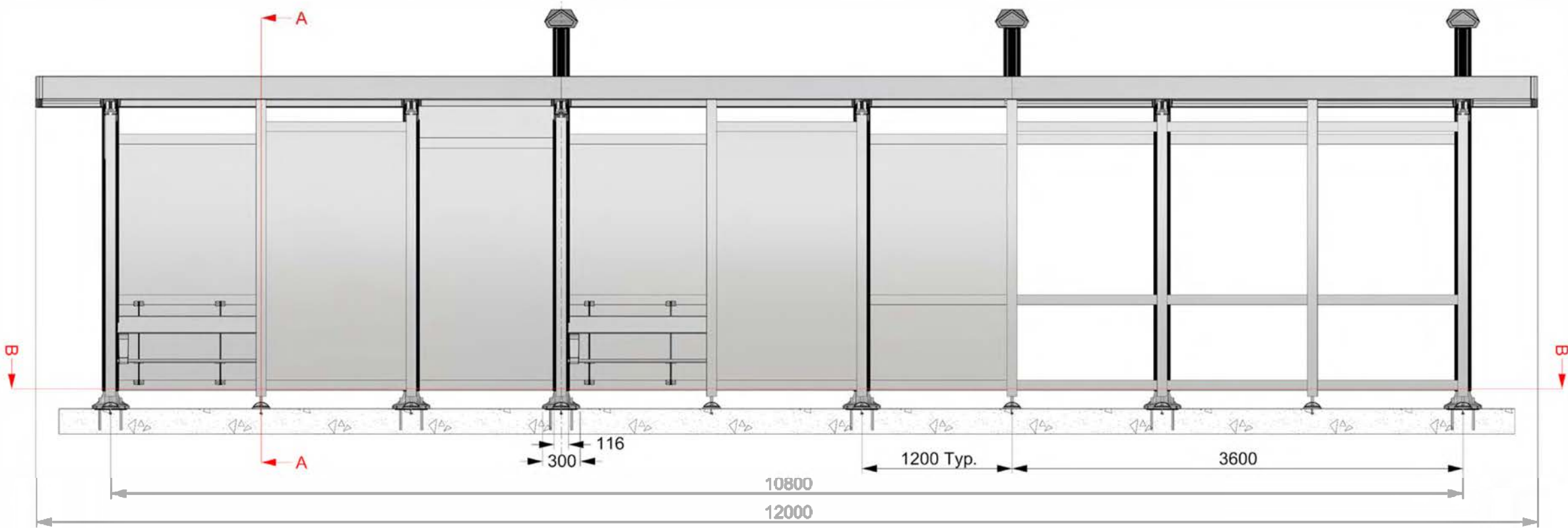
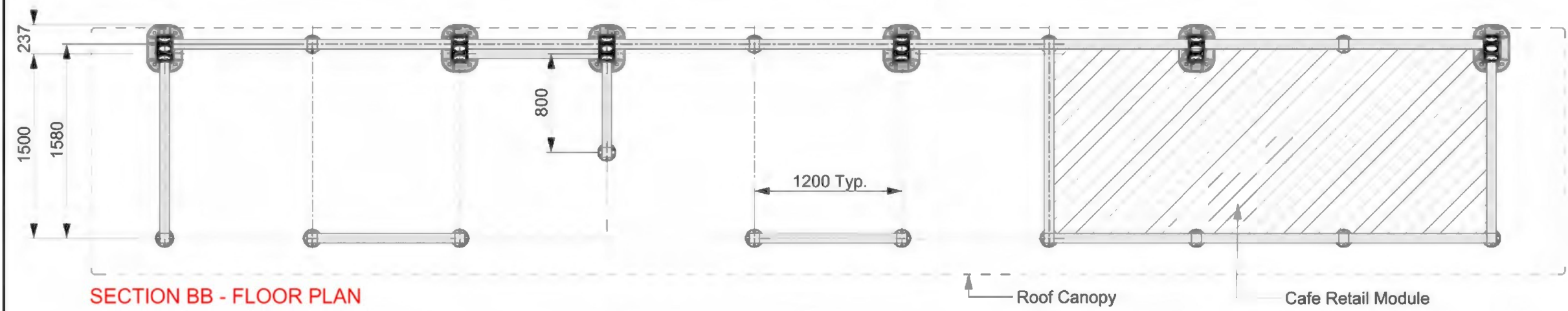


DESIGNBRAND

Beca



ISSUE	DESCRIPTION	DRAWN	CHECKED	APPROVED	DATE
A	Initial release.	-	-	-	2016-10-26



<div>DESIGN BRAND</div>	4 - 10 Mohuia Crescent ELSDON - PORIRUA www.designbrand.co.nz	CLIENT Otago Regional Council	PROJECT Dunedin Shelter Suite	MATERIAL	N/A	DESCRIPTION Dunedin CANTILEVER TRIPLE 1500 - Full Shelter with Retail Configueration		ISSUE A
				FINISH	N/A		SIZE	
				COLOUR	N/A	PART/DRAWING NUMBER	Untitled	SCALE

Screen & Leaner

Wind Screen with integrated Leaner Seat - Used under awnings and where footpath space is restricted. Can be extended in length to suite site requirements.



Leaner Seat brackets attached directly to screen wall.

Bus Stop "ID", location signage attached to Wind Screen post.

Potential to remove the need for additional pole mounted street clutter.

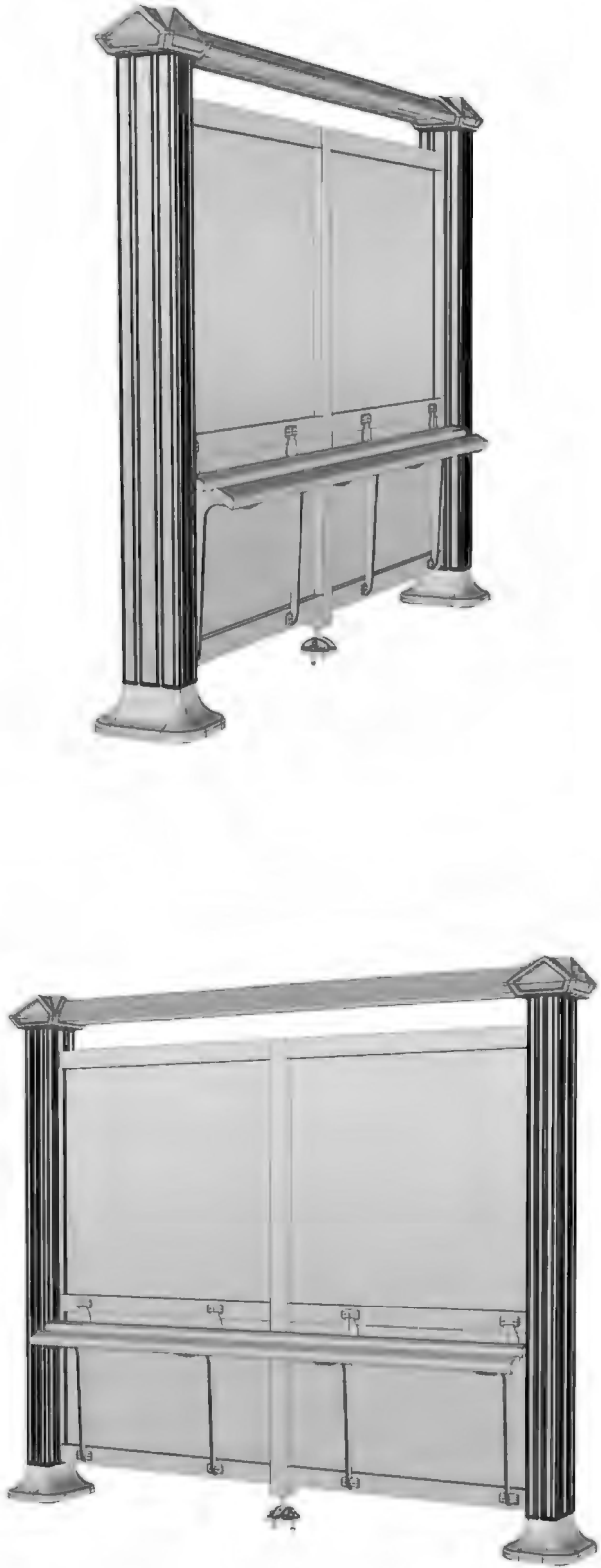
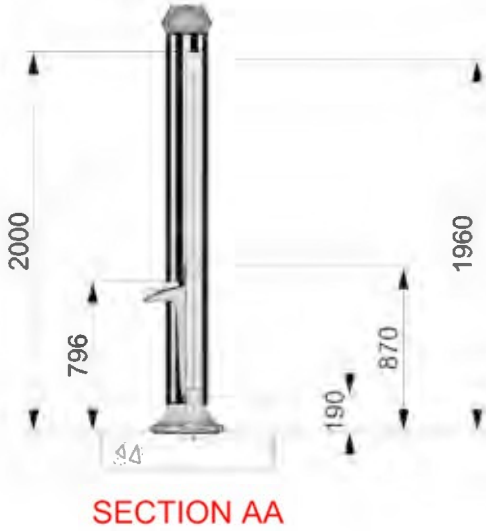
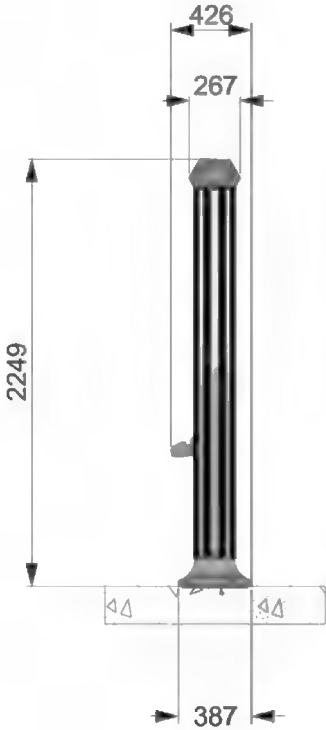
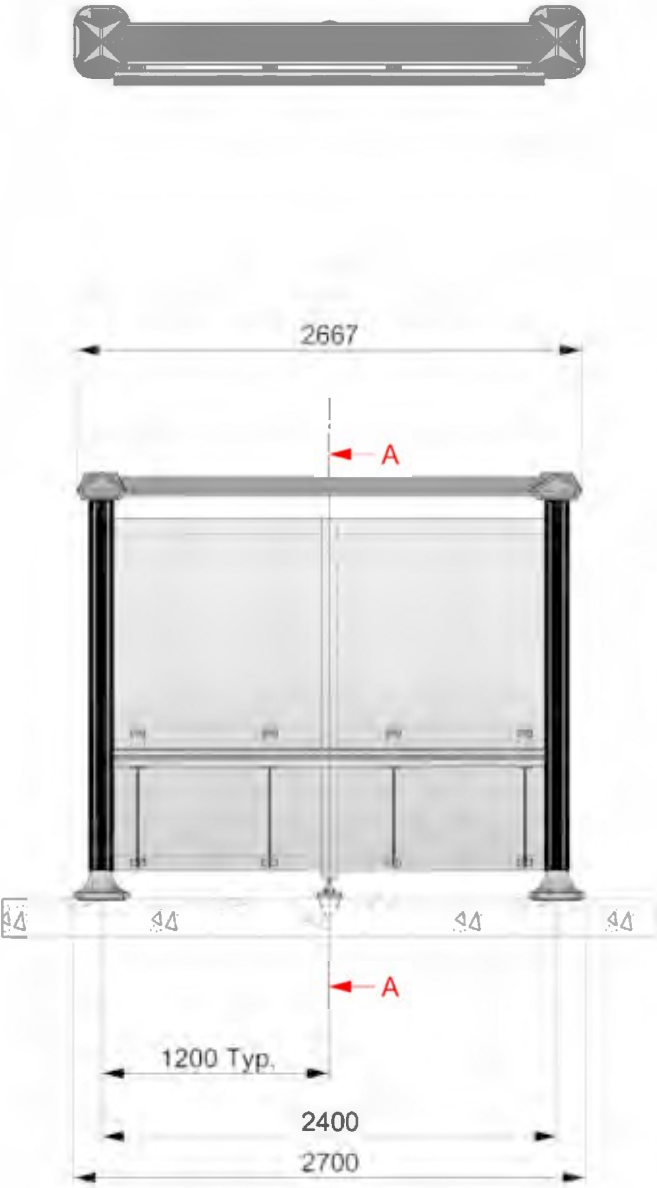


Pocket glazing for glass allows for easy glass replacement.

Anti-graffiti film applied to both sides of glass. Can be clear or could include digital printing with pattern or local art.



ISSUE	DESCRIPTION	DRAWN	CHECKED	APPROVED	DATE
A	Initial release.	MDT	-	-	2016-10-28



Totems & Wayfinders - Preliminary Concept Proposal

27-7-2016

Ideal for use under existing building awnings in combination with totem wayfinders to create a "sense of place" for bus stops in the Bus Hub or for Super Stop locations.



Double Post Totem -
with integrated "smart technology"
interactive display unit.



Single Post Totem -
with surface mounted "smart technology"
interactive display unit.



Applied Bus Stop ID information signage.
Could be used under awnings where space
is restricted.



Copyright © 2016 Designbrand Ltd. All rights reserved.

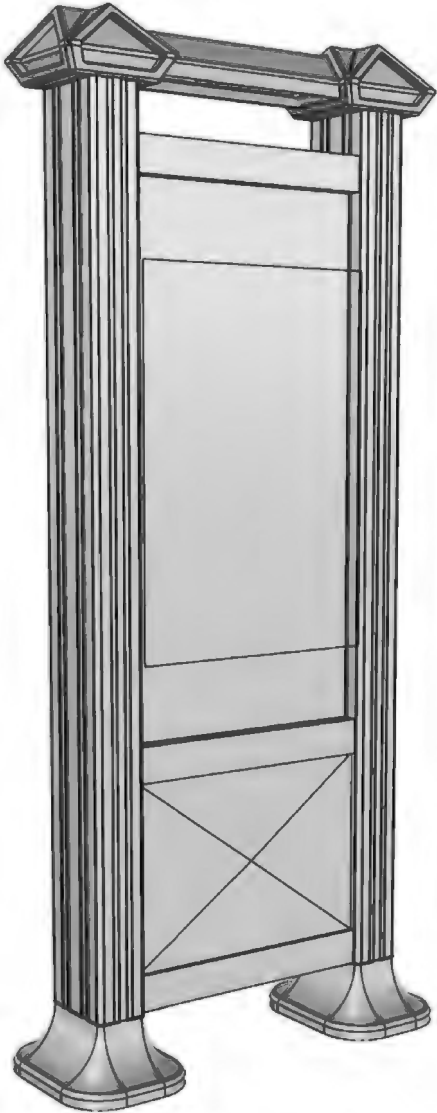
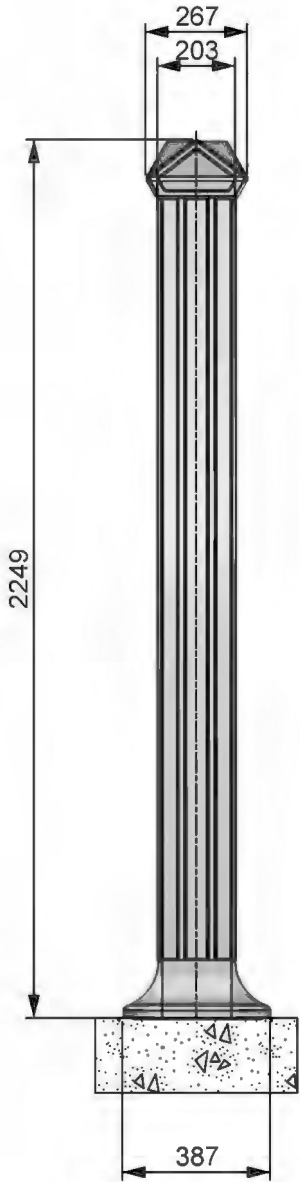
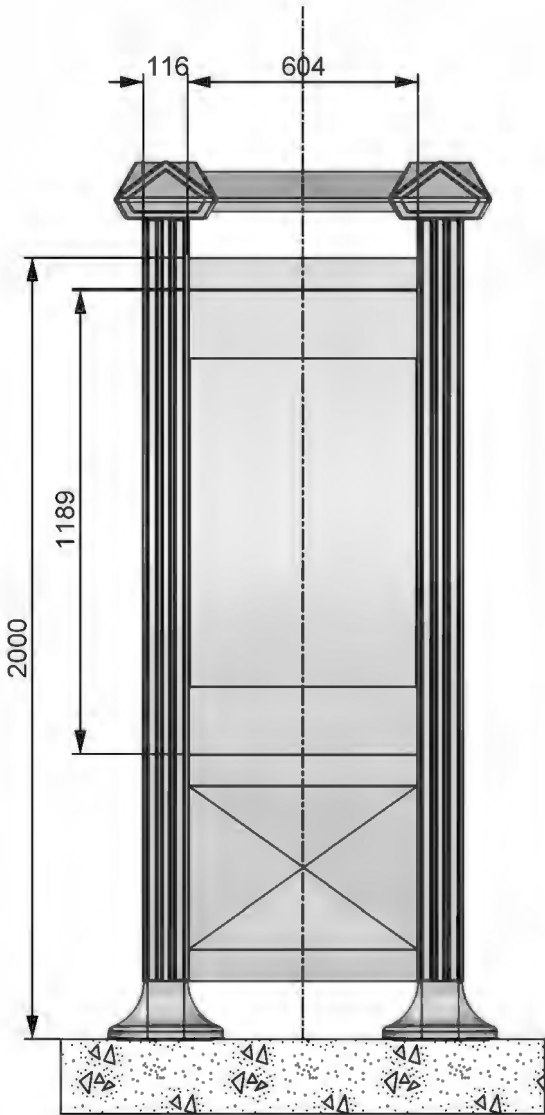
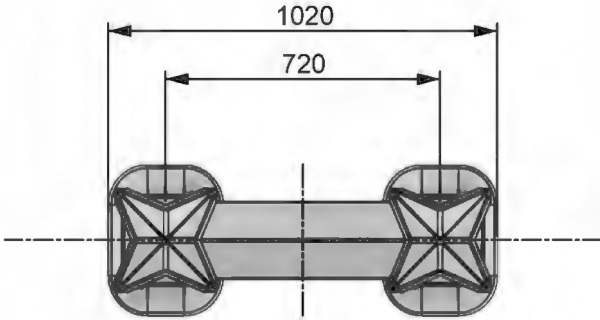
DUNEDIN BUS HUB

DESIGN BRAND DESIGNBRAND

Beca

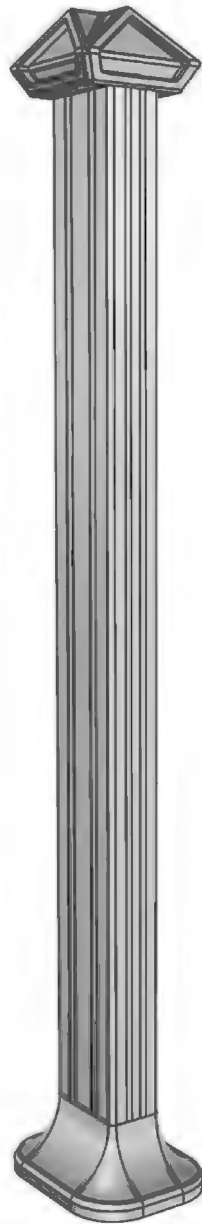
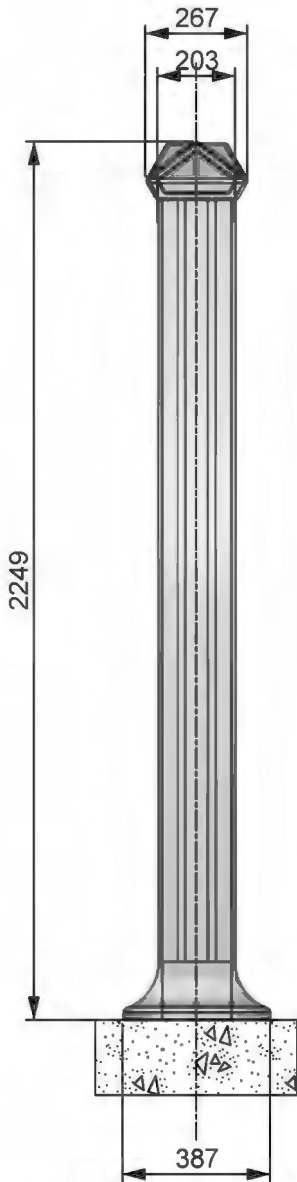
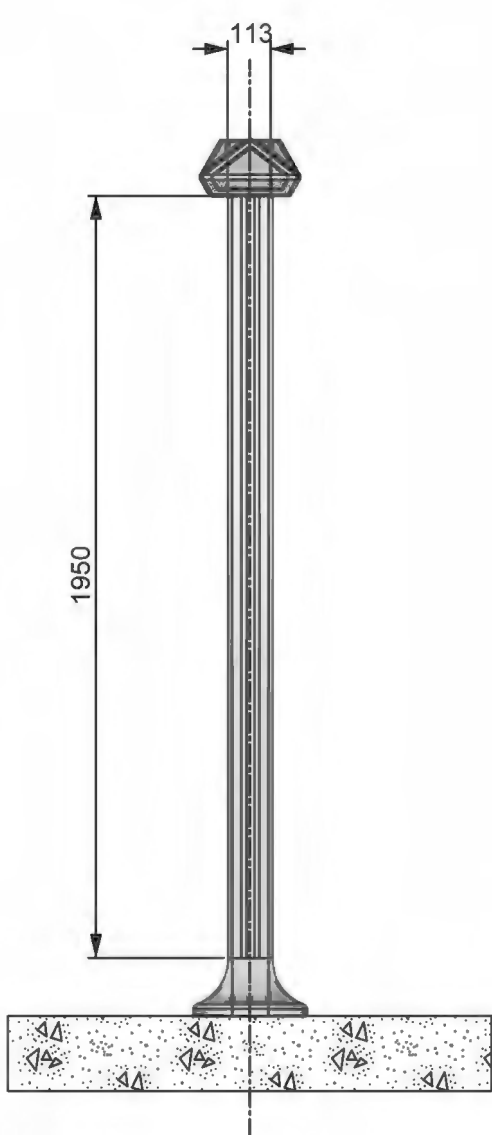
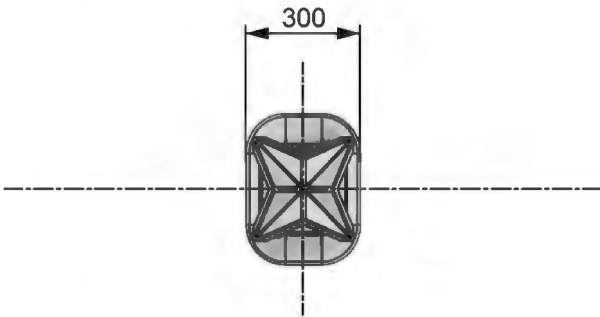
Otago Regional Council

ISSUE	DESCRIPTION	DRAWN	CHECKED	APPROVED	DATE
A	Initial release.	CHS	-	-	2016-11-04



	4 - 10 Mohuia Crescent ELSDON - PORIRUA www.designbrand.co.nz	CLIENT Otago Regional Council	PROJECT Dunedin Shelter Suite	MATERIAL	N/A	DESCRIPTION DUNEDIN DOUBLE POST WAYFINDING TOTEM	SIZE A3	ISSUE A
				FINISH	N/A			
				COLOUR	N/A	PART/DRAWING NUMBER Untitled	SCALE 1:20	SHEET 1 of 2

ISSUE	DESCRIPTION	DRAWN	CHECKED	APPROVED	DATE
A	Initial release.	CHS	-	-	2016-11-04

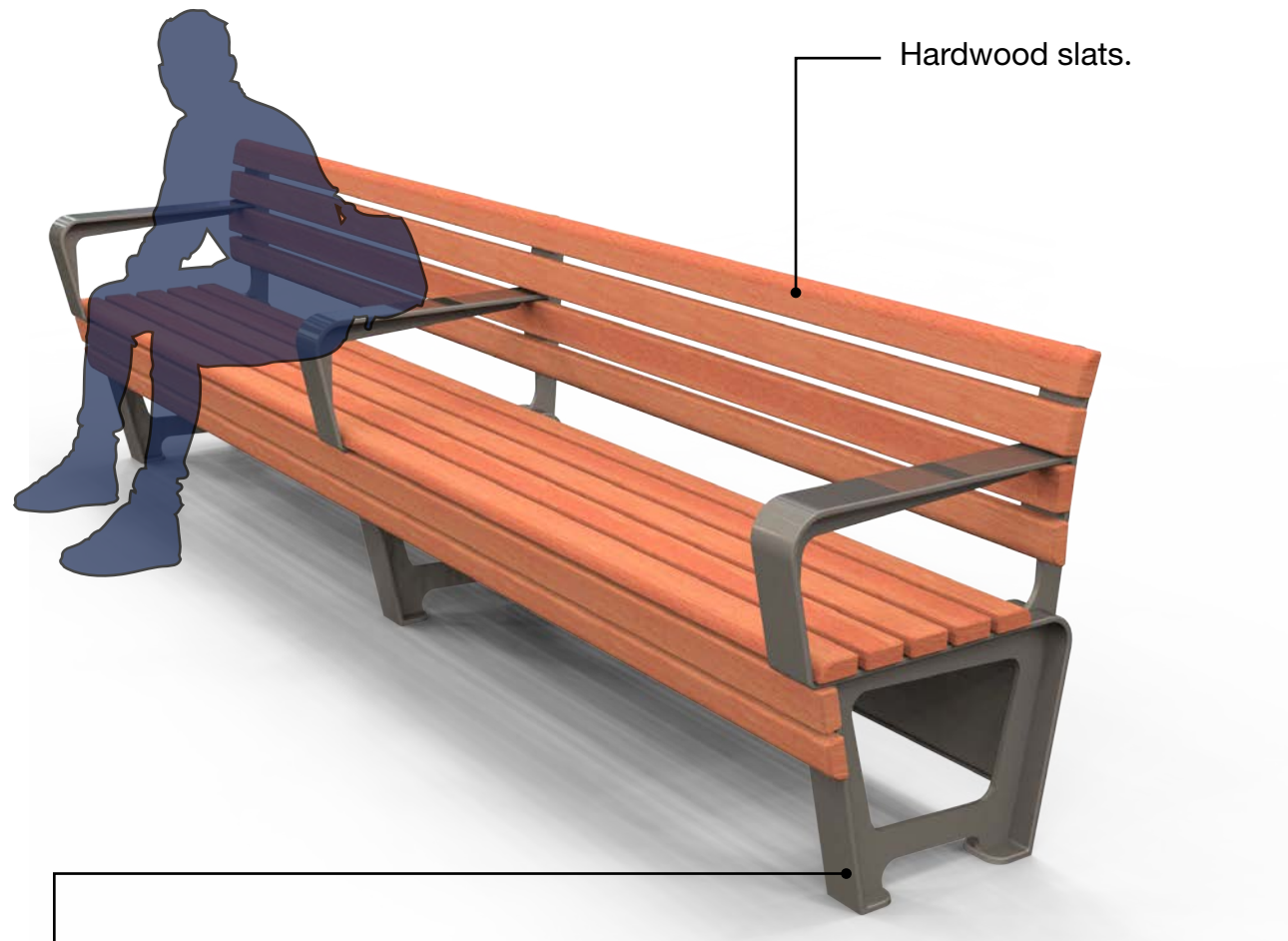


	4 - 10 Mohuia Crescent ELSDON - PORIRUA www.designbrand.co.nz	CLIENT Otago Regional Council	PROJECT Dunedin Shelter Suite	MATERIAL	N/A	DESCRIPTION DUNEDIN SINGLE POST WAYFINDING TOTEM		ISSUE		
				FINISH	N/A		SIZE	A3	A	
				COLOUR	N/A		PART/DRAWING NUMBER	Untitled	SCALE	1:20

Bench Seat - Preliminary Concept Proposal

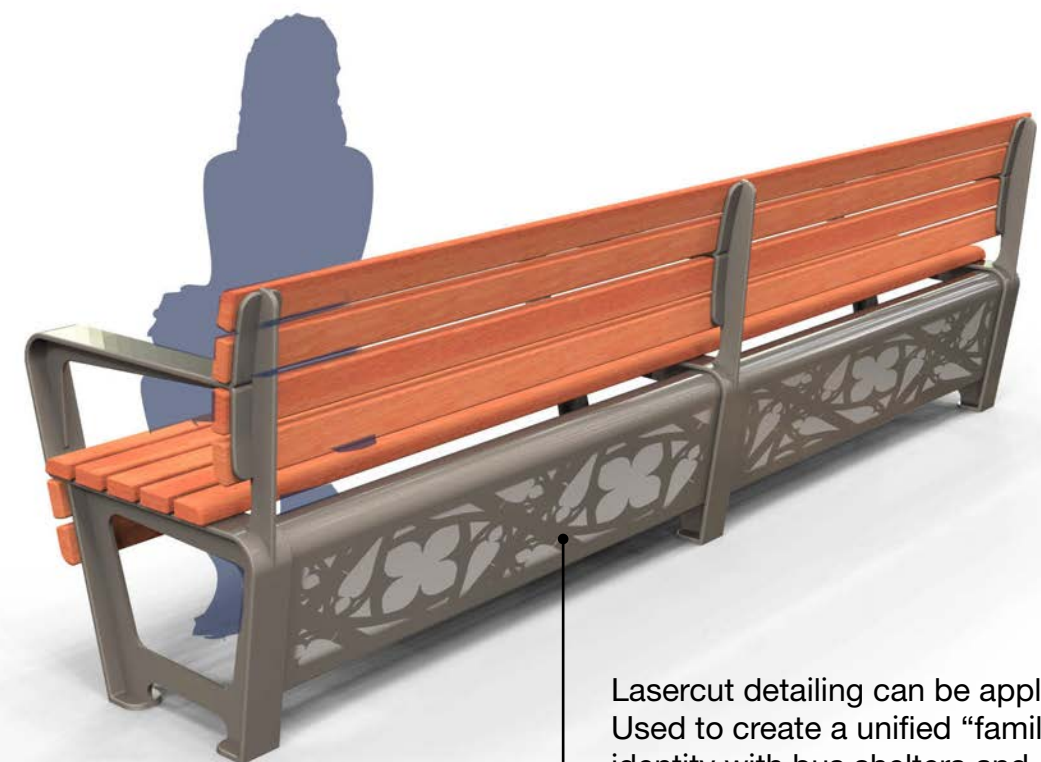
16-11-2016

Ideal for use under existing building awnings in combination with totem wayfinders to create a "sense of place" for bus stops in the Bus Hub or for Super Stop locations. Can also be used as stand alone seating in other outdoor landscapes e.g. near Cafe Shelter.



Hardwood slats.

Aluminium seat bracket castings with integrated arms.



Rear bracing panel - aluminium sheet fabrication.

Lasercut detailing can be applied. Used to create a unified "family" identity with bus shelters and other furniture objects.

Copyright © 2016 Designbrand Ltd. All rights reserved.

DUNEDIN BUS HUB

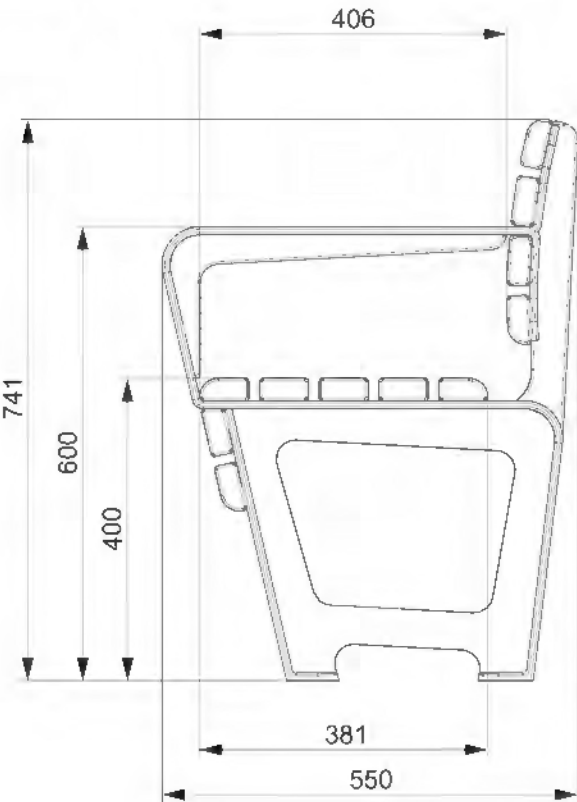
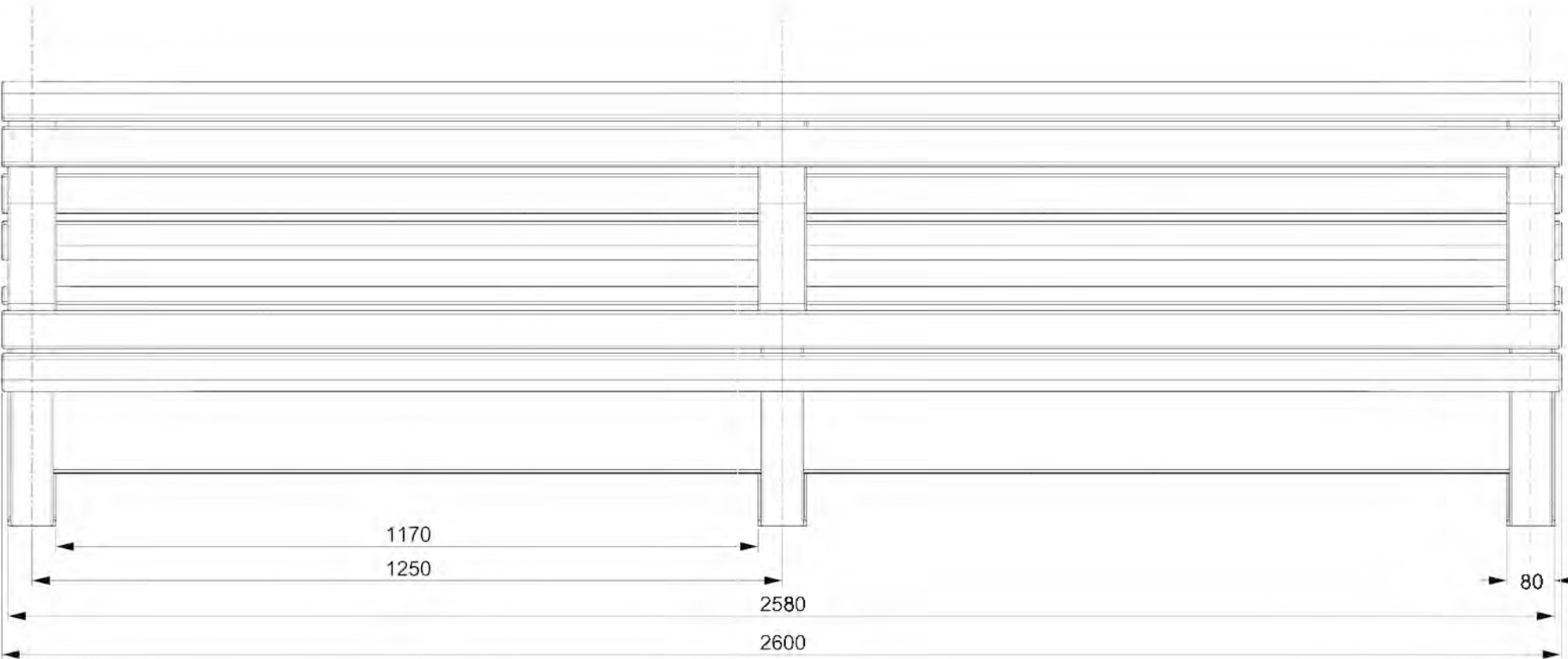
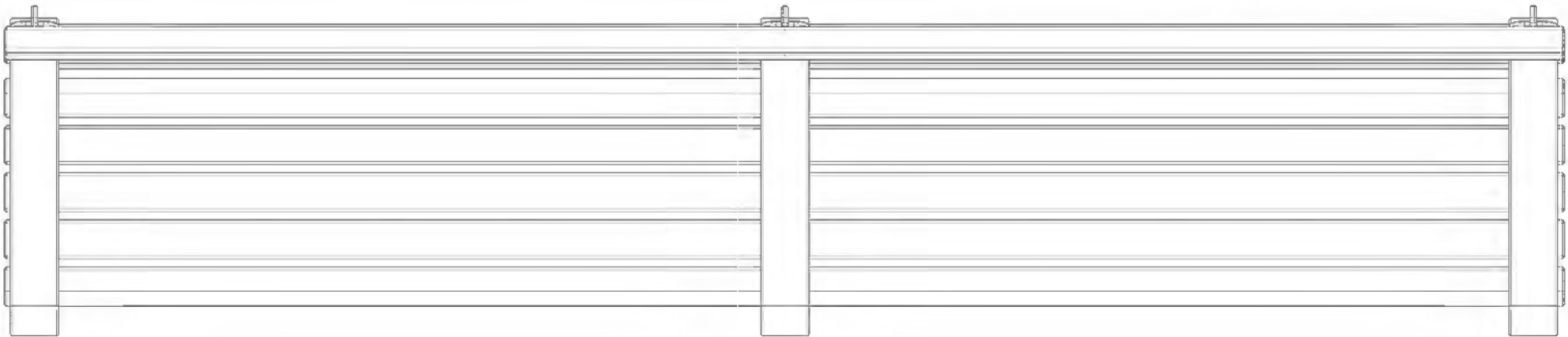
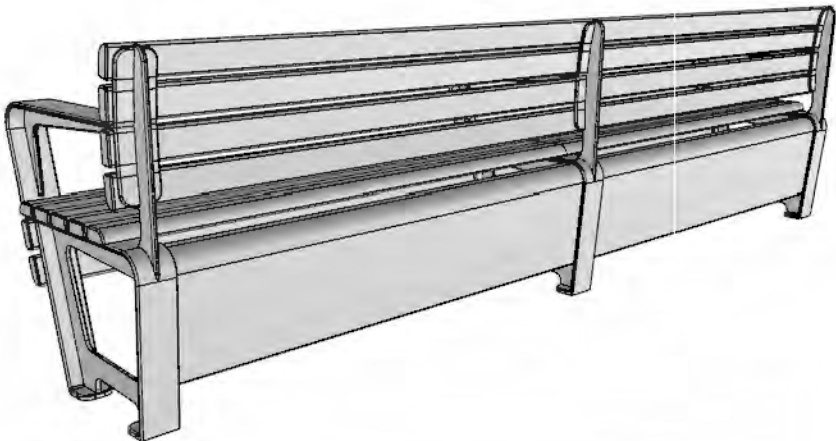
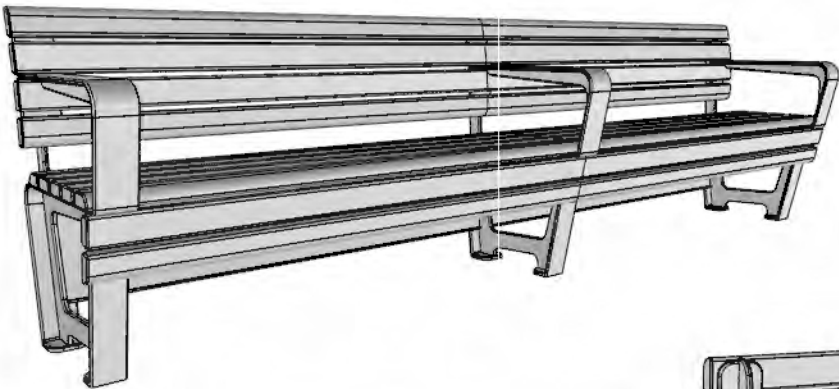


DESIGNBRAND

Beca



ISSUE	DESCRIPTION	DRAWN	CHECKED	APPROVED	DATE
A	Initial release.				2016-11-16



	4 - 10 Mohuia Crescent ELSDON - PORIRUA www.designbrand.co.nz	CLIENT Otago Regional Council	PROJECT Dunedin Shelter Suite	MATERIAL	N/A	DESCRIPTION Dunedin BENCH SEAT		ISSUE A
				FINISH	N/A		SIZE A3	
				COLOUR	N/A	PART/DRAWING NUMBER Untitled	SCALE 1:10	SHEET 1 of 1

Proposed Materials & Finishes

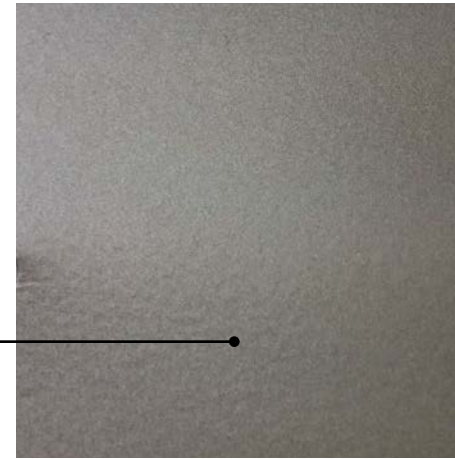
16-11-2016



Hardwood - Saligna (Sydney Blue Gum)

Saligna is a light to dark pink colour and has a coarse texture.

Finished with Natural Oil - for best natural environmentally friendly and easy maintenance properties.



All aluminium surfaces to be Powder Coated -
Dulux 9007183K Duratec Copper Metallic

Colour Palette

16-11-2016

OTAGO Blue
RGB 14 39 82
HEX 0e2752

Analogous



Complementary



Compound

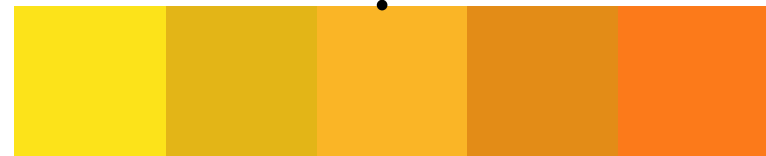


Shades



OTAGO Yellow
RGB 250 182 38
HEX FAB626

Analogous



Complementary



Compound



Shades



Please Note: Otago colour values have not been verified by client. Do not use for production. Indicative for colour study only.

Copyright © 2016 Designbrand Ltd. All rights reserved.

DUNEDIN BUS HUB



DESIGNBRAND

Beca

