

# 17 Hazards, Hazardous Substances and Earthworks

*[Amended by Plan Change 11, 11/10/10]*

## ***Introduction***

The City is subject to a wide range of potential hazards. Its topography (flood plains, steep to rolling hills), geology (clay and loess soils, mudstone formations and volcanic deposits), low lying coastal areas and its proximity to earthquake fault lines, present the City with a likelihood of the occurrence of natural hazards. Technological or 'human induced' hazards such as uncontrolled tussock fires, the failure of structures such as bridges and buildings, and the slumping of abandoned mine shafts are further hazards which could affect the City.

The Abbotsford slip in 1979 increased community awareness of potential land instability in the Green Island/Saddle Hill area. Heavy rainfalls have emphasised the vulnerability of the Taieri Plain and the lower Waikouaiti River to flooding, and of the Otago Peninsula to landslips and soil erosion.

Predicted rises in sea level may affect low-lying coastal areas. These include land developed for residential, industrial and recreational activities. The effects of sea level rise are not expected to be felt during the term of this District Plan. However, it is important to ensure that today's planning decisions allow for the predicted effects of sea level rise in order that life and property are not placed at risk. Council acknowledges that due to the level of development, land lying within the South Dunedin area enclosed by Victoria Road, the extended John Wilson Ocean Drive, Tainui Road, Ravelston Street, Royal Crescent, Portobello Road, Portsmouth Drive, Strathallan Street, Wilkie Road, South Road and Forbury Road will require mitigation works if the sea level rises. Such works are to be undertaken by the Council.

The impact of hazards increases as the number of people increases who are affected by the hazard, or the risk of hazard giving rise to an adverse event. The effects can be localised or widespread.

Hazardous substances and their storage, use, or transport are potential threats to the health and safety of the City's people and to the environment. Such substances include industrial, agricultural, horticultural and household chemicals, medical wastes, petroleum products including LPG and lubricating oils, and radioactive substances. *[Amended by Plan Change 13, 2 September 2013]*

The Council's role in hazards and hazardous substances management under the Resource Management Act 1991 is defined in section 31(b):

*The control of any actual or potential effects of the use, development, or protection of land, including for the purpose of-*

- (i) the avoidance or mitigation of natural hazards; and*
- (ii) the prevention or mitigation of any adverse effects of the storage, use, disposal, or transportation of hazardous substances...*

In accordance with sections 35(3) and 35(5)(j) of the Act, the Council is also required to keep reasonably available at its principal office, records of natural hazards and hazardous substances to enable the public to be better informed of their duties and of the functions, powers and duties of the local authority, and to

enable them to participate effectively under the Act. *[Amended by Plan Change 13, 2 September 2013]*

The Regional Policy Statement for Otago outlines the responsibilities of the Dunedin City Council with regard to natural hazards and hazardous substances in accordance with section 62(1)(i) of the Act.

To address the matters above, the Council will use the measures in the District Plan and other relevant legislation, such as the Building Act 2004, the Civil Defence Emergency Management Act 2002, the Hazardous Substances and New Organisms Act 1996 and the Land Transport Act 1998. The Council also acknowledges that there are other non-statutory mechanisms that can be used to complement the legislative requirements. Examples of these include management and emergency response plans, New Zealand Gazette Notice 26 March 2004- Issue No. 35 et al, EPA Approved Codes of Practice (HSNOCOP), and New Zealand Standards. To illustrate how the use of other legislation and non-statutory mechanisms outside the District Plan are particularly relevant, it is noted that the Council has limited ability to control the effects of the transportation of hazardous substances through the District Plan. While it is useful for the objectives and policies to refer to such effects so that the matter can be at least considered when assessing resource consent applications where the Council has unlimited discretion, the methods of implementation relating to transportation can only rely on other legislative provisions and non-statutory mechanisms. *[Amended by Plan Change 13, 2 September 2013]*

This section of the Plan also contains provisions to control earthworks. Earthworks are an essential part of the development of Dunedin's land and economy including the provision of infrastructure. Well-managed earthworks do not give rise to significant adverse environmental effects. However, without careful management, earthworks can result in injury to people and damage to property, exacerbate certain existing hazards, create new hazards, and, if carried out at contaminated sites, release hazardous substances into the environment. Earthworks can also result in adverse effects on rivers, lakes, streams, wetlands, coastal waters and groundwater, visual amenity and landscape, indigenous flora and fauna, high class agricultural soils, and archaeological and cultural sites. In addition, during construction, earthworks can cause adverse effects on local amenity and on locally, regionally and nationally important infrastructure, such as the transportation network, the reticulated water, foul sewer and stormwater networks and the National Grid.

The earthworks provisions in this section of the District Plan work alongside other mechanisms that control earthworks. The Rural and Indigenous Vegetation and Fauna sections of this Plan control the effects of earthworks and other activities on high class soils, Areas of Significant Conservation Value and other areas of coastal habitat, wetland, skink habitat and indigenous vegetation. Certain earthworks will be carried out as part of building work; these will be subject to the New Zealand Building Code and may require a building consent under the Building Act 2004. Other regulatory mechanisms through which earthworks of certain types are controlled include the Historic Places Act 1993, the Regional Plan: Waste for Otago, the Regional Plan: Water for Otago and the Otago Regional Council Flood Protection Management Bylaw 2008.

*[Amended by Plan Change 11, 11/10/10]*

## ***17.1 Significant Resource Management Issues***

### **Issue 17.1.1**

**The City's geology and topography are such that natural hazards may occur.**

*Objective:* 17.2.1

*Policies:* 17.3.1 - 17.3.6

### **Explanation**

Hazard susceptibility varies across the City. The effects of hazards vary depending on where they occur, how many people could be affected and on the type of hazard. The significant natural hazards affecting or likely to affect the City are flooding, coastal erosion, sea level rise, land instability, wind, snow, earthquakes and fire hazards. Of these, flooding is the most commonly occurring natural hazard in the City, especially on the Taieri Plains and low-lying areas near the Waikouaiti River.

It is necessary to ensure that predicted rises in sea level are considered when deciding on further development in areas that may be at risk of inundation.

### **Issue 17.1.2**

**There is potential for technological hazards to occur within the City.**

*Objective:* 17.2.1

*Policies:* 17.3.4, 17.3.7

### **Explanation**

Human activities, for example gas and fuel storage, and abandoned mine shafts, disused sheep dips and toxic and hazardous substance waste storage can create hazards. Awareness of these hazards and their potential location is important in avoiding, remedying or mitigating any adverse effects on subdivision, land use activities, development and the environment. *[Amended by Plan Change 13, 2 September 2013]*

### **Issue 17.1.3**

**Development has occurred in or adjacent to areas where natural and technological hazards exist or may occur.**

*Objective:* 17.2.1

*Policies:* 17.3.2 - 17.3.6

### **Explanation**

In the past, development in the City located where it was thought to be appropriate at the time. In some of these areas hazards have occurred which were unexpected or the causes of which were unknown. Such hazards may also occur in the future.

**Issue 17.1.4**

**The characteristics, location and impact of natural and technological hazards require better knowledge and understanding.**

*Objective: 17.2.1*

*Policy: 17.3.1*

**Explanation**

Natural and technological hazards may occur without warning or may develop over a period of time. Studies of historical records of climate and events such as flooding, coastal processes, drought, heavy snowfalls, fire, earth movements and earthquakes, as well as knowledge of geology and soil types, and the location of fault lines, are factors in gaining a better understanding of the likelihood of a hazard event occurring and the best means to avoid, remedy or mitigate its effect.

**Issue 17.1.5**

**Effective management needs to be implemented to avoid, remedy or mitigate the effects of hazards.**

*Objective: 17.2.1*

*Policies: 17.3.2 - 17.3.8*

**Explanation**

Managing activities to avoid, remedy or mitigate hazards will minimise the costs of clean up and rehabilitation after an event as well as reducing adverse effects on the health and safety of the community.

**Issue 17.1.6**

**The storage, use, and transportation of hazardous substances have the potential for adverse effects on the environment. [Amended by Plan Change 13, 2 September 2013]**

*Objective: 17.2.2*

*Policy: 17.3.8*

**Explanation**

Any activities that involve hazardous substances carry a degree of health and other risk to individuals or of damage to the environment. There is also a risk to the economic wellbeing of the City's people and long term commercial viability of the City and its businesses from hazardous substances. The Council has a role in ensuring that the effects of incidents involving hazardous substances are prevented or mitigated. This can be achieved, for example, by the appropriate siting of facilities, establishment of buffer zones and protected routes, together with a requirement for contingency planning by the user concerned. [Amended by Plan Change 13, 2 September 2013]

### Issue 17.1.7

**Earthworks are an essential part of the development of Dunedin's land and economy. However, without careful management, earthworks can have a range of adverse effects on safety, property and the environment. [Inserted by Plan Change 11, 11/10/10]**

*Objective:* 17.2.3

*Policy:* 17.3.9

### Explanation

Adverse effects of earthworks can include the following:

- Unstable cuts and fill may cause instability to land and buildings.
- Redirection of surface water may cause flooding or erosion.
- Exacerbation of existing instability and flooding hazards.
- The release of hazardous substances from contaminated land into the wider environment.
- Sedimentation of water bodies.
- Disturbance and contamination of groundwater.
- Adverse visual and amenity impacts.
- Impacts occurring during earthworks construction, including noise, vibration, dust, mud and impacts on infrastructure, such as the transportation network, the reticulated water, foul sewer and stormwater networks and the electricity transmission network.
- Loss of or damage to natural landforms, vegetation and habitats.
- Destruction, damage or modification of archaeological and cultural sites.
- Depletion of high class soils.

## 17.2 Objectives

### Objective 17.2.1

**Ensure the effects on the environment of natural and technological hazards are avoided, remedied or mitigated.**

*Issues: 11.1.7, 17.1.1 - 17.1.5*

*Policies: 17.3.1 - 17.3.7*

*AER: 17.9.1*

### Explanation

The Council has an obligation under the Act to control the effects of the use, development or protection of land including avoiding or mitigating the effects of natural hazards. Buildings, structures and people need to be protected from hazards. The Council must ensure it is able to respond adequately to the threat and effects of hazards within the City. This includes a response capacity for dealing with natural and post event hazards; for example structural engineering advice for seismically or fire affected buildings and infrastructural services and active participation in the NZ Fire Service chaired Hazardous Substances Technical Liaison Committee (HSTLC) and NZ Police chaired Emergency Services Coordinating Committee (ESCC). The Council also ensures that any proposed subdivision, land use activities or development will not cause or be affected by hazards. In assessing the effects of hazards, attention will be given to the acceptable level of risk and any potential adverse effects. *[Amended by Plan Change 13, 2 September 2013]*

There is a need to plan for known potential hazards and for anticipated hazards. This requires an understanding of hazards as well as up to date information on those hazards which may affect the City. Effective planning is needed to reduce risks to people and resources. The responses will vary according to the characteristics of the hazard and the affected areas.

### Objective 17.2.2

**Prevent or mitigate the adverse environmental effects and risks arising from facilities and activities involving the storage, use, or transportation of hazardous substances. *[Amended by Plan Change 13, 2 September 2013]***

*Issue: 17.1.6*

*Policy: 17.3.8*

*AER: 17.9.2*

### Explanation

Facilities or activities involving hazardous substances and hazardous wastes generated by the use of hazardous substances may cause adverse environmental effects when the substances are not controlled adequately or when they escape into the environment. Such releases, whether accidental, or through poor management practices, may cause environmental contamination (including contaminated sites) or injury. To avoid, remedy or mitigate potential adverse effects, these facilities and activities need to be located appropriately and managed correctly. In assessing the effects of hazardous substances, attention will be given to the acceptable level of risk and any potential adverse effects. *[Amended by Plan Change 13, 2 September 2013]*

**Objective 17.2.3**

**Earthworks in Dunedin are undertaken in a manner that does not put the safety of people or property at risk and that minimises adverse effects on the environment.** *[Inserted by Plan Change 11, 11/10/10]*

*Issue:* 17.1.7

*Policy:* 17.3.9

*AERs:* 17.7.3, 17.7.4, 17.7.5

**Explanation**

Earthworks are an essential part of the development of Dunedin's land and economy, but can have adverse effects on people, property and the environment if they are not well-managed. A balance can be struck between providing for earthworks and controlling their adverse effects, through the careful design and location of earthworks, the avoidance of significant works in sensitive locations and the implementation of appropriate mitigation measures.

## 17.3 Policies

### Policy 17.3.1

**Gather and maintain accurate information about, and encourage research into, the location and causes of hazards and the risks associated with them, and the potential for adverse effects of hazards within the City.**

*Objective:* 17.2.1

*Methods:* 17.4.1, 17.4.2, 17.4.5

### Explanation

The community, the Council and other agencies need to be aware of hazards and the risks involved in order to make informed decisions and to avoid, remedy or mitigate the adverse effects of these hazards. An information base that is up to date and comprehensive is essential for well-informed decision making.

Greater understanding of the natural hazards affecting or likely to affect the City, will enable better informed decisions to be made. There are many agencies with expertise and an interest in the natural hazards of the City and the region, and the Council will work with them to increase understanding.

### Policy 17.3.2

**Control building and the removal of established vegetation from sites or from areas which have been identified as being, or likely to be, prone to erosion, falling debris, subsidence or slippage.**

*Objective:* 17.2.1

*Methods:* 17.4.3 - 17.4.5

### Explanation

Land movement affects significant areas of the City and, in many instances, stabilisation would be difficult. Intensive development of such areas is undesirable. In other areas where the causes of the land instability are understood and can be avoided, remedied or mitigated on a long term basis, further limited development may be allowed. An example of the way in which adverse effects can be avoided, remedied or mitigated is by the undertaking of tree planting in affected areas.

### Policy 17.3.3

**Control development in areas prone to the effects of flooding.**

*Objective:* 17.2.1

*Methods:* 17.4.3, 17.4.4

### Explanation

Areas of the City are contained within flood plains which are protected by protective works.<sup>1</sup> Intensive development in such areas needs to be controlled and the ground and floor levels of new buildings defined to ensure that the effects of flooding on new developments are avoided or mitigated.

---

<sup>1</sup> Refer to the Hazards Register.



### Policy 17.3.4

**Control development of areas located over underground mines.**

*Objective:* 17.2.1

*Methods:* 17.4.3, 17.4.4

### Explanation

While substantial records of mining in the area are available, these are of variable accuracy and detail. Accurate definition of all areas affected, or likely to be affected, is not possible. The effects of mining on the surface depend on the strata overlying the mines and their depth. Such information, while it can be inferred, is not always specifically known and indications of mine collapse have occurred on the surface in the past. Intensive development in such areas is undesirable unless the underlying features are determined and remedial actions are possible and taken.

### Policy 17.3.5

**Control development in those areas identified as being likely to be affected by a rise in sea level.**

*Objective:* 17.2.1

*Methods:* 17.4.3 - 17.4.5, 17.4.9

### Explanation

A rise in sea level has been predicted as a probable consequence of global warming although the rate at which it will occur is subject to some debate. Sea level rise predictions based on present world environmental conditions continuing<sup>2</sup> is regarded as the best approach when considering long term planning and development issues.<sup>3</sup> Approval of development near the coast or in low-lying areas nearby should take this into account.

Monitoring by the scientific community of the effects of global warming and any consequent amendment to the prediction for a sea level rise may mean that requirements will change over time.

---

<sup>2</sup> That is, the 'business as usual scenario', prepared by the UN - based 'Intergovernment Panel on Climate Change'.

<sup>3</sup> The IPCC prediction (1990) is for a sea level rise of 0.2 m (range 0.1 to 0.3 m) by year 2030, and 0.66 m (range 0.3 to 1.1 m) by year 2100.

### Policy 17.3.6

**Control development in those areas located within or adjacent to land affected by, or likely to be affected by, coastal hazards.**

*Objective:* 17.2.1

*Methods:* 17.4.3 - 17.4.5, 17.4.9

### Explanation

Erosion and changes to the coastline are the result of continuing natural processes. Attempts to control these effects are often inadequate and in some instances have aggravated them. Measures which reinforce natural processes are more likely than others to be successful. Where development is proposed adjacent to the coastline, adequate buffer zones which provide long term security must be provided. Before any development is approved, the mechanism of any hazards affecting the land must be understood, and measures taken to avoid or mitigate them.

### Policy 17.3.7

**Encourage developers constructing new buildings or making substantial alterations to existing structures adjacent to arterial routes, to locate them so as to avoid the possibility of those routes being obstructed by debris resulting from the collapse of those structures.**

*Objective:* 17.2.1

*Method:* 17.4.3

### Explanation

Access to critical facilities and the rapid evacuation of people and resources are vital if the community is to be able to respond in the event of an earthquake occurring. The prevention or avoidance of building collapses affecting the principal routes will aid the community response.

### Policy 17.3.8

**Control activities involving the storage, use, and transportation of hazardous substances, and identify sites where hazardous substance processes and facilities which require resource consent are located. [Amended by Plan**

*Change 13, 2 September 2013]*

*Objective:* 17.2.2

*Methods:* 17.4.1, 17.4.2, 17.4.6 - 17.4.8, 17.4.10

*Rules:* 17.5.1 – 17.5.4

### Explanation

Local authorities have the responsibility to manage the effects of land use. The nature and scale of environmental effects and risk associated with hazardous substances are influenced by their location. This includes their proximity to sensitive environmental areas or residential areas, schools, hospitals, emergency services and arterial routes. Specific controls relating to the use, storage, disposal and transportation of hazardous and environmentally damaging substances will affect the nature and scale of risk and environmental effects. While the Council has limited ability to control the effects of the transportation of hazardous substances through the District Plan, it is a matter that can be at least considered when assessing resource consent applications where the Council has unlimited discretion.

## Policy 17.3.9

**Control earthworks in Dunedin according to their location and scale.** *[Inserted by Plan Change 11, 11/10/10]*

*Objective:* 17.2.3  
*Methods:* 17.4.4, 17.4.8, 17.4.12  
*Rules* 17.7.1 – 17.7.5

## Explanation

The degree to which earthworks adversely affect safety, property and the environment is dependent on the scale and location of the activity.

Resource consent is required only where the scale and/or location of earthworks are such that adverse effects are likely. Where resource consent is required, the range of effects assessed is tailored to the scale and location of the earthworks. Appropriate mitigation measures will be imposed to minimise any potential adverse effects; such measures may include but will not be limited to reduction in the scale of the earthworks. Earthworks should not occur in any areas where it is not possible to avoid, remedy or mitigate their effects.

## 17.4 Methods of Implementation

In addition to the rules, the methods to be used to achieve the objectives and policies identified in this section include the following:

### Method 17.4.1 Hazards Register

Compile, maintain and provide access for the public to a Hazards Register containing information on the location and nature of identified or potential:

- flood prone areas, including tsunami hazard
- areas of land instability
- coastal sites susceptible to coastal erosion and sea level rise
- areas prone to subsidence or inundation
- geological hazards such as fault lines, and areas susceptible to amplified ground shaking and liquefaction
- areas prone to high wind and heavy snowfalls
- areas prone to drought
- technological hazards such as underground mining activities, areas of infilling, closed landfills, disused gas works sites, former hazardous substances manufacturing or disposal areas.

The Hazards Register will be publicly available at the Dunedin City Council.

*Policies:* 17.3.1, 17.3.8

### Method 17.4.2 Hazardous Substances Register

Compile and maintain a Hazardous Substances Register<sup>1</sup> listing the locations and types of consented activities that generate, use, store, or transport hazardous substances, including explosives, flammable gases, liquids, and solids, oxidizers, toxics, corrosives, ecotoxics, and hazardous wastes exhibiting the preceding characteristics. The register will also include information on known contaminated sites. Enquiries regarding the Hazardous Substances Register should be directed to the Dunedin City Council. *[Amended by Plan Change 13, 2 September 2013]*

*Policies:* 17.3.1, 17.3.8

### Method 17.4.3 Land and Project Information Memoranda

Use the Land Information Memorandum and Project Information Memorandum processes to identify whether or not an activity or structure is proposed to be located on a site identified as hazard-prone in the Hazards Register, or a site which the Council has good cause to suspect may be prone to a hazard. The Council will encourage applicants to apply for Project Information Memoranda in advance of building consent and resource consent applications.

*Policies:* 17.3.2 - 17.3.7

---

<sup>1</sup> On 1 April 2004, all Dunedin City Council Dangerous Goods Licences expired. From this date they became the responsibility of the Environmental Protection Agency (EPA) under the Hazardous Substances and New Organisms Act 1996. All new licences for hazardous substances are now issued by independent Test Certifiers approved by the EPA. The Council no longer holds current information on the use of hazardous substances where resource consent is not required and hazardous substances may be present without the Council's knowledge. *[Inserted by Plan Change 13, 7 July 2012]*

#### **Method 17.4.4 Information Requirements for Hazardous Sites**

Where any proposed activity that:

- (a) requires an application for resource consent and involves earthworks;
- (b) requires an application for subdivision consent or other resource consent where discretion is unrestricted; and/or
- (c) requires an application for building consent

is to be located on a site identified as hazard-prone in the Hazards Register or on a site that the Council, with good cause, suspects to be hazard-prone, the Council may, at its discretion, require that the relevant consent application includes the results of a site investigation and assessment carried out by a suitably qualified person. *[Amended by Plan Change 11, 11/10/10]*

*Policies: 17.3.2 - 17.3.6, 17.3.9*

#### **Method 17.4.5 Liaison**

- (i) Liaise with other agencies, including EPA, Department of Labour, Ministries of Health and Environment, Test Certifiers and affected landowners to gather, collate, share and provide information on known hazards, and develop measures to encourage sustainable land use practices in hazard-prone areas. *[Amended by Plan Change 13, 2 September 2013]*
- (ii) Liaise with agencies responsible for preparing industry and building codes of practice that avoid, remedy or mitigate hazards and improve the community's awareness, and encourage implementation of these codes of practice.

*Policies: 17.3.1, 17.3.2, 17.3.5*

#### **Method 17.4.6 Accords and Protocols**

The Council will assess resource consent applications for the establishment and operation of hazardous processes and facilities within the City. Existing facilities will be subject to the same procedures should they expand or alter their operations or inputs. *[Amended by Plan Change 13, 2 September 2013]*

*Policy: 17.3.8*

#### **Method 17.4.7 Advocacy**

- (i) Encourage the implementation of environmentally acceptable technologies in the storage, use, disposal, or transportation of hazardous substances.
- (ii) Encourage voluntary agreements on transport routes to avoid sensitive activities such as hospitals.

*Policy: 17.3.8*

**Method 17.4.8 Information, Education and Public Awareness**

- (i) Produce brochures and advise the public about any relevant changes in legislation or controls administered by the Council that may affect hazardous processes and facilities.
- (ii) Promote increased awareness and knowledge among developers and operators of the environmental risks associated with hazardous substances.
- (iii) Provide advice and information to the public regarding the potential impacts of earthworks and methods for mitigating those impacts. *[Amended by Plan Change 11, 11/10/10]*

*Policies: 17.3.8, 17.3.9*

**Method 17.4.9 Works Programmes**

Consider the implementation of works necessary to avoid, remedy or mitigate the potential adverse effects of natural hazards in particular areas of the City.

*Policies: 17.3.5, 17.3.6*

**Method 17.4.10 Management Plans**

- (i) Require, where appropriate, the preparation and operation of site management and emergency response management plans for hazardous substances.
- (ii) The Council will encourage initiatives which involve formulating responses to natural hazards.

*Policy: 17.3.8*

**Method 17.4.11 Zoning**

Ensure that the adverse effects of natural hazards can be avoided, remedied or mitigated by restricting the scale and density of development in potentially hazard prone areas through the use of zoning.

*Policies: 4.3.7, 4.3.9, 6.3.4, 6.3.14, 17.3.2, 17.3.3, 17.3.4, 17.3.5.*

*[Inserted by Variation 9A, 2/3/04]*

**Method 17.4.12 Guidelines**

Provide guidelines with information on best management practices for earthworks activities, including:

- (i) An Accidental Discovery Protocol to be followed in the event that archaeological material is discovered during earthworks.
- (ii) Sediment control techniques.

*Policy: 17.3.9*

*[Inserted by Plan Change 11, 11/10/10]*

## 17.5 Rules: Hazardous Substances

### Notes to Plan Users:

1. *In addition to these District Plan rules, the provisions of the following legislation may also be applicable to activities involving hazardous substances: [Inserted by Plan Change 13, 2 September 2013]*
  - *Hazardous Substances and New Organisms (HSNO) Act 1996 and regulations*
  - *Medicines Act 1981*
  - *Health and Safety in Employment Act 1992*
  - *Building Act 2004*
  - *Health Act 1956*
  - *Radiation Protection Act 1965*
2. *Compliance with the following District Plan provisions does not ensure compliance with the Hazardous Substances and New Organisms (HSNO) Act 1996 and often separate approvals will be required under this Act. Any permitted activity included within this section must also comply with sections 15 and 17 of the Resource Management Act 1991. In addition, activities involving hazardous substances may also require resource consent from the Otago Regional Council. [Inserted by Plan Change 13, 2 September 2013]*
3. *Table 17.1 contains maximum permitted quantity thresholds (plus, in certain cases, storage requirements) for the storage, use or transportation of different types of hazardous substance, as classified via the Hazardous Substance (Classification) Regulations 2001. The quantities vary according to District Plan zone and/or activity type. Where the requirements set out in this table are not met, resource consent will be required under Rule 17.5.2, 17.5.3 or 17.5.4 of this Plan. [Inserted by Plan Change 13, 2 September 2013]*
4. *Unless otherwise stated, if a hazardous substance falls into more than one HSNO sub-class and is therefore controlled by more than one maximum permitted quantity threshold, the base or primary class shall determine the maximum permitted quantity threshold. The base or primary class of a substance is the first classification listed beside any substance within New Zealand Gazette Notice No. 35, as well as on all HSNO required labelling and signage. [Inserted by Proposed Plan Change 13, 2 September 2013]*
5. *All volumes shall be aggregated i.e. as a permitted activity a site may hold the maximum threshold identified in Table 17.1 of each Class 1 plus Class 2 plus Class 3 and/or Class 4.1.3A-C plus Class 4.2A plus Class 4.3A etc. [Inserted by Plan Change 13, 2 September 2013]*
6. *The permitted quantity thresholds in this table apply per site, except for the Campus, Port 1 and 2, Airport, Industrial 1 zones and forestry and timber treatment activities in the Rural and Rural Residential zone, where the permitted quantity thresholds apply per hazardous sub-facility. Where more than one activity is carried out per site or hazardous sub-facility, each hazardous sub-facility shall comply with Rule 17.5.1 or the permitted quantity thresholds Table 17.1, otherwise resource consent will be required under Rule 17.5.2, 17.5.3 or 17.5.4 of this Plan. [Inserted by Plan Change 13, 2 September 2013]*

**Notes to Plan Users (cont):**

7. *Central, Large Scale Retail and Local Activity Zones are included in Table 17.1 within the Group 2 section. [Inserted by Plan Change 13, 2 September 2013]*
8. *Where the volume or weight of a hazardous substance is affected by the temperature and pressure at which it is stored, the volume or weight shall be considered (for the purposes of this table) to be that present in conditions of 20°C and 101.3kPa. [Inserted by Plan Change 13, 2 September 2013]*
9. *The disposal of hazardous substances is adequately controlled by the HSNO Act and by the Regional Plan: Waste for Otago and is not controlled by the District Plan. [Inserted by Plan Change 13, 2 September 2013]*
10. *Where any site contains residential activity then Group 1: Residential Zone thresholds detailed in Table 17.1 shall exclusively apply, regardless of any other activity occurring on the site except for within the Group 4: Rural/Rural Residential zone, where Group 1: Residential Zone thresholds apply to the residential dwelling and curtilage only. [Inserted by Plan Change 13, 2 September 2013]*
11. *Schedule 12 of the Hazardous Substances (Dangerous Goods and Scheduled Toxic Substances) Transfer Notice 2004 (as amended) provides maximum quantities for the indoor storage and use of LPG. [Inserted by Consent Order ENV-2012-CHC-99, 6 December 2012]*

**Thresholds for Indoor Storage and Use of LPG**

Location	Max. Quantity of LPG	Max. size of cylinder
A detached house or single storey attached dwellings, and Multi-storey attached dwellings up to 3 storeys	20 kg per dwelling	10 kg cylinder
Multi-storey attached dwellings over 3 storeys	10 kg per dwelling	10 kg cylinder
Hotels, bars, restaurants, public buildings, places of worship, shops, offices and laboratories not attached to a dwelling	10 kg per 10 sq. m. of the indoor floor area, up to a maximum total quantity of 100 kg	10 kg cylinder
Hotels, bars, restaurants, public buildings, places of worship, shops, offices and laboratories that are attached to a dwelling	20 kg per premises	10 kg cylinder
Factories and warehouses	45 kg per 50 sq. m. of the indoor floor area, up to a maximum total quantity of 180 kg per occupancy	45 kg cylinder



**Rule 17.5.1 Permitted Activities (Policy 17.3.8)**

The following activities are permitted activities:

- (i) The storage and use of hazardous substances for domestic purposes, associated with a lawfully established residential activity, excluding home occupation. The hazardous substance(s) must form part of a consumer product intended for domestic use. The product must be stored in the container or packaging in which it was sold, and used in accordance with the manufacturer's instructions. *[Amended by Plan Change 13, 2 September 2013]*
- (ii) The storage and use of fuel and other substances that are contained in the fuel system, electrical system or control system of motor vehicles, boats, aircraft and small engines. *[Inserted by Plan Change 13, 2 September 2013]*
- (iii) The storage and use of agrichemicals within the Group 4: Rural/Rural Residential Zone, in accordance with NZS8409:2004. *[Inserted by Plan Change 13, 2 September 2013]*
- (iv) The storage and use of Class 3 fuels within the Group 4: Rural/Rural Residential Zone in accordance with the Environmental Protection Agency's Approved Practice Guide for Above-Ground Fuel Storage on Farms, September 2010. *[Inserted by Plan Change 13, 2 September 2013]*
- (v) The storage and use of fertiliser within the Group 4: Rural/Rural Residential Zone in accordance with the:
  - Fertiliser (Corrosive) Group Standard HSR002569, and
  - Fertiliser (Oxidising) Group Standard HSR002570, and
  - Fertiliser (Subsidiary Hazard) Group Standard HSR002571, and
  - Fertiliser (Toxic) Group Standard HSR002572, and
  - Fert Research's Code of Practice for Nutrient Management 2007 *[Inserted by Plan Change 13, 2 September 2013]*
- (vi) The storage and use of transformer cooling oils in electricity transformers. *[Inserted by Plan Change 13, 2 September 2013]*
- (vii) The transit and two-hour storage maximum of tracked hazardous substances transit and 72-hour storage maximum of non-tracked hazardous substances within the Port 1, Port 2 and Industrial 1 Zones. *[Inserted by Plan Change 13, 2 September 2013]*
- (viii) The storage of hazardous substances (excluding fixed installations) within the Group 6: Port Zone with either a Hazardous Substance Location Certificate or Transit Depot Certificate issued pursuant to the Hazardous Substances (Classes 1 to 5) Regulations 2001 and for Classes 6, 8, 9 in compliance with the HSNO Act 1996. *[Inserted by Plan Change 13, 2 September 2013]*
- (ix) Unless provided for by Rules 17.5.1(i)-(viii), the storage, use, or transportation of hazardous substances not exceeding the quantity limits and other requirements stipulated in Table 17.1. *[Amended by Plan Change 13, 2 September 2013]*

**Table 17.1: Thresholds Above Which a Resource Consent is Required for Hazardous Substances**  
**(IMPORTANT - Table 17.1 must be read with Notes for Plan Users and Permitted Activity Rule 17.5.1) [Amended by Plan Change 13, 2 September 2013]**

Substance	HSNO sub-class and hazard classification	Substance	Group 1: Residential Zones and residential activities in all other zones.	Group 2: Activity, Industry, Stadium, Proposed Harbourside Zones, exc. residential activities.	Group 3: Campus Zone, excluding residential activities.	Group 4: Rural and Rural Residential Zone, excluding residential, forestry and timber treatment activities.	Group 5: Forestry and timber treatment activities in the Rural and Rural Residential Zone.	Group 6: Port Zone, excluding residential activities.	Group 7: Airport Zone, excluding residential activities.	Group 8: Major Facilities (Mercy Hospital) Zone.
Explosives	1.1A-G, J, L Mass explosion hazard	Gunpowder and black powder	15kg	15kg	0	15kg	0	0	0	0
		Display fireworks	0							
		Industrial explosives (e.g. TNT) and all other 1.1	0	25kg	0	25kg	25kg	No threshold	0	0
	1.2B-L Projection hazard	All	No thresholds							
	1.3C, F-L Fire and minor blast hazard	Smokeless ammunition reloading powder	15kg	50kg	0	15kg	15kg	No threshold	15kg	15kg
Explosives	1.3C, F-L Fire and minor blast hazard	Retail fireworks	No thresholds – refer to Hazardous Substance (Fireworks) Regulations 2001							
		All other 1.3	No thresholds							
	1.4B-G, S No significant hazard	Safety ammunition and marine flares	25kg	50kg	5kg	25kg	15kg	50kg	No threshold	25kg
		Retail fireworks	No thresholds – refer to Hazardous Substance (Fireworks) Regulations 2001							
		Sodium Azide	0							
		All other 1.4	No thresholds							
	1.5D Very insensitive, with mass explosion hazard	All	No thresholds							
	1.6N Extremely insensitive, no mass explosion hazard	All	No thresholds							

(IMPORTANT – Table 17.1 must be read with Notes for Plan Users and Permitted Activity Rule 17.5.1) [Amended by Plan Change 13, 2 September 2013]

Substance	HSNO sub-class and hazard classification	Substance	Group 1: Residential Zones and residential activities in all other zones.	Group 2: Activity, Industry, Stadium, Proposed Harbourside Zones, excluding residential activities.	Group 3: Campus Zone, excluding residential activities.	Group 4: Rural and Rural Residential Zone, excluding residential, forestry and timber treatment activities.	Group 5: Forestry and timber treatment activities in the Rural and Rural Residential Zone.	Group 6: Port Zone, excluding residential activities.	Group 7: Airport Zone, excluding residential activities.	Group 8: Major Facilities (Mercy Hospital) Zone.
Gases and aerosols	2NH (Non-Hazardous)	All	10m <sup>3</sup>	200m <sup>3</sup>	200m <sup>3</sup> 500 litres of non-flammable, non-toxic cryogenic liquids stored in accordance with AS1894:1997	200m <sup>3</sup>	200m <sup>3</sup>	200m <sup>3</sup>	200m <sup>3</sup>	10m <sup>3</sup>
	2.1.1A High hazard flammable gases [Amended by Consent Order ENV-2012-CHC-99, 6 December 2012]	LPG (inc. propane-based refrigerant) in cylinders or multi-vessel tanks. See Note for Plan Users 11 with regard to indoor storage of LPG.	200kg Total Outdoor Storage Quantity	450kg Total Outdoor Storage Quantity	450kg Total Outdoor Storage Quantity	450kg Total Outdoor Storage Quantity	450kg Total Outdoor Storage Quantity	600kg Total Outdoor Storage Quantity	450kg Total Outdoor Storage Quantity	200kg Total Outdoor Storage Quantity
		LPG propane-based refrigerant in commercial refrigeration receivers	0	50kg	50kg	50kg	50kg	50kg	50kg	0
Gases and aerosols	2.1.1A High hazard flammable gases [Amended by Consent Order ENV-2012-CHC-99, 6 December 2012]	Acetylene	1m <sup>3</sup>	2m <sup>3</sup>	30m <sup>3</sup>	30m <sup>3</sup>	30m <sup>3</sup>	30m <sup>3</sup>	30m <sup>3</sup>	1.45m <sup>3</sup>
		Hydrogen, methane and all other permanent gases	0	0	30m <sup>3</sup>	100m <sup>3</sup>	30m <sup>3</sup>	30m <sup>3</sup>	30m <sup>3</sup>	0
Gases and aerosols	2.1.1B Medium hazard flammable gases	Anhydrous ammonia refrigerant	0	140kg	0	0	0	140kg	140kg	0
		All other 2.1.1B	No thresholds							
	2.1.2A Flammable aerosols	All	20 litres	450 litres	450 litres	450 litres	450 litres	450 litres	450 litres	20 litres

(IMPORTANT – Table 17.1 must be read with Notes for Plan Users and Permitted Activity Rule 17.5.1) [Amended by Plan Change 13, 2 September 2013]

Substance	HSNO sub-class and hazard classification	Substance	Group 1: Residential Zones and residential activities in all other zones.	Group 2: Activity, Industry, Stadium, Proposed Harbourside Zones, excluding residential activities.	Group 3: Campus Zone, excluding residential activities.	Group 4: Rural and Rural Residential Zone, excluding residential, forestry and timber treatment activities.	Group 5: Forestry and timber treatment activities in the Rural and Rural Residential Zone.	Group 6: Port Zone, excluding residential activities.	Group 7: Airport Zone, excluding residential activities.	Group 8: Major Facilities (Mercy Hospital) Zone.
Flammable liquids (stored above ground in containers with individual capacity ≤450 litres)	3.1A Liquid: Very high hazard (flash point <23°C, initial boiling point ≤35°C)	Petrol	<ul style="list-style-type: none"><li>• 10 litres inside dwelling.</li><li>• 50 litres outside dwelling. (No storage in metal drums)</li></ul>	<ul style="list-style-type: none"><li>• 50 litres (any storage except metal drums).</li><li>• 250 litres in Dangerous Goods cabinet approved to AS 1940.</li><li>• 420 litres in approved HSNO ‘Type’ stores.</li></ul>	2000 litres		<ul style="list-style-type: none"><li>• 50 litres (any storage except metal drums).</li><li>• 250 litres in Dangerous Goods cabinet approved to AS 1940</li><li>• 420 litres in approved HSNO ‘Type’ stores.</li></ul>			<ul style="list-style-type: none"><li>• 10 litres inside dwelling.</li><li>• 50 litres outside dwelling. (No storage in metal drums)</li></ul>
		All other	0	50 litres						
		3.1B Liquid: High hazard (FP<23°C, IBP>35°C)	All – e.g. acetone, paint spray thinners, pure alcohol	10 litres	<ul style="list-style-type: none"><li>• 10 litres (any storage).</li><li>• 250 litres in Dangerous Goods cabinet approved to AS 1940.</li><li>• 450 litres in approved HSNO ‘Type’ stores.</li><li>• Large scale retail activities only: 1500 litres in containers of up to 5 litres each.</li><li>• Group 6: Port Zone are permitted to hold 1500 litres in containers of up to 20 litres where a test location certificate is held</li></ul>					100 litres stored in accordance with HSNO requirements.
		3.1A Petrol plus 3.1B	Petrol plus any 3.1B substance – cumulative total limit	<ul style="list-style-type: none"><li>• 10 litres inside dwelling.</li><li>• 50 litres outside dwelling. (No storage in metal drums)</li></ul>	<ul style="list-style-type: none"><li>• 50 litres (any storage except metal drums).</li><li>• 250 litres in Dangerous Goods cabinet approved to AS 1940.</li><li>• 420 litres in approved HSNO ‘Type’ stores.</li></ul>	2000 litres		<ul style="list-style-type: none"><li>• 50 litres (any storage except metal drums).</li><li>• 250 litres in Dangerous Goods cabinet approved to AS 1940.</li><li>• 420 litres in approved HSNO ‘Type’ stores.</li></ul>	2000 litres	<ul style="list-style-type: none"><li>• 50 litres (any storage except metal drums).</li><li>• 250 litres in Dangerous Goods cabinet approved to AS 1940.</li><li>• 420 litres in approved HSNO ‘Type’ stores.</li></ul>

**(IMPORTANT – Table 17.1 must be read with Notes for Plan Users and Permitted Activity Rule 17.5.1) [Amended by Plan Change 13, 2 September 2013]**

Substance	HSNO sub-class and hazard classification	Substance	Group 1: Residential Zones and residential activities in all other zones.	Group 2: Activity, Industry, Stadium, Proposed Harbourside Zones, excluding residential activities.	Group 3: Campus Zone, excluding residential activities.	Group 4: Rural and Rural Residential Zone, excluding residential, forestry and timber treatment activities.	Group 5: Forestry and timber treatment activities in the Rural and Rural Residential Zone.	Group 6: Port Zone, excluding residential activities.	Group 7: Airport Zone, excluding residential activities.	Group 8: Major Facilities (Mercy Hospital) Zone.
Flammable liquids (stored above ground in containers with individual capacity ≤450 litres)	3.1C Liquid: Medium hazard (FP≥23°C, but ≤35°C)	All – e.g. kerosene, aviation kerosene	<ul style="list-style-type: none"> <li>20 litres inside dwelling.</li> <li>50 litres outside dwelling.</li> </ul>	<ul style="list-style-type: none"> <li>10 litres (any storage).</li> <li>250 litres in Dangerous Goods cabinet approved to AS 1940.</li> <li>450 litres in approved HSNO 'Type' stores.</li> <li>Large scale retail activities only: 1500 litres in containers of up to 5 litres</li> </ul>						<ul style="list-style-type: none"> <li>20 litres inside dwelling.</li> <li>50 litres outside dwelling.</li> </ul>
	3.1D Liquid: Low hazard (FP>60°C, but ≤93°C)	All – e.g. diesel, petroleum fuel oils	<ul style="list-style-type: none"> <li>20 litres inside dwelling.</li> <li>209 litres outside dwelling</li> </ul>	450 litres						<ul style="list-style-type: none"> <li>20 litres inside dwelling.</li> <li>209 litres outside dwelling</li> </ul>
Flammable liquids (stored above ground in containers with individual capacity >450 litres)	3.1A Liquid: Very high hazard (flash point <23°C, initial boiling point ≤35°C)	Petrol	0	<ul style="list-style-type: none"> <li>Certified Single skin tanks: 0.</li> <li>Certified Double skin tanks: 600 litres.</li> </ul>		<ul style="list-style-type: none"> <li>Certified Single skin tanks: 0.</li> <li>Certified Double skin tanks: 2000 litres.</li> </ul>	<ul style="list-style-type: none"> <li>Certified Single skin tanks: 0.</li> <li>Certified Double skin tanks: 600 litres.</li> </ul>	0		
		All others	0							
	3.1B Liquid: High hazard (FP<23°C, IBP>35°C)	All – e.g. acetone, paint spray thinners, pure alcohol	0	<ul style="list-style-type: none"> <li>Certified Single skin tanks: 0.</li> <li>Certified Double skin tanks: 600 litres.</li> </ul>						0
	3.1C Liquid: Medium hazard (FP≥23°C, but ≤35°C)	All – e.g. kerosene, aviation kerosene	0	<ul style="list-style-type: none"> <li>Certified Single skin tanks: 450 litres.</li> <li>Certified Double skin tanks: 2000 litres.</li> </ul>						0

**(IMPORTANT – Table 17.1 must be read with Notes for Plan Users and Permitted Activity Rule 17.5.1) [Amended by Plan Change 13, 2 September 2013]**

Substance	HSNO sub-class and hazard classification	Substance	Group 1: Residential Zones and residential activities in all other zones.	Group 2: Activity, Industry, Stadium, Proposed Harbourside Zones, excluding res activities.	Group 3: Campus Zone, excluding residential activities.	Group 4: Rural and Rural Residential Zone, excluding residential, forestry and timber treatment activities.	Group 5: Forestry and timber treatment activities in the Rural and Rural Residential Zone.	Group 6: Port Zone, excluding residential activities.	Group 7: Airport Zone, excluding residential activities.	Group 8: Major Facilities (Mercy Hospital) Zone.
Flammable liquids (stored above ground in containers with individual capacity >450 litres)	3.1D Liquid: Low hazard (FP>60°C, but ≤93°C)	All – e.g. diesel, petroleum fuel oils	<ul style="list-style-type: none"><li>• Certified Single skin tanks: 450 litres.</li><li>• Certified Double skin tanks: 600 litres.</li><li>• Certified Super vault tanks constructed to South Western Research Institute (SWRI) standards: 10000 litres.</li></ul>	<ul style="list-style-type: none"><li>• Certified Single skin tanks: 450 litres.</li><li>• Certified Double skin tanks: 2000 litres.</li><li>• Certified Super vault tanks constructed to SWRI standards: 10000 litres.</li></ul>	<ul style="list-style-type: none"><li>• Single skin tanks: 450 litres.</li><li>• Double skin tanks: 2000 litres.</li><li>• Super vault tanks constructed to SWRI standards: 10000 litres.</li></ul>	<ul style="list-style-type: none"><li>• Certified Single skin tanks: 450 litres.</li><li>• Certified Double skin tanks: 5000 litres.</li><li>• Certified Super vault tanks constructed to SWRI standards: 30000 litres.</li></ul>		<ul style="list-style-type: none"><li>• Certified Single skin tanks: 450 litres.</li><li>• Certified Double skin tanks: 20000 litres.</li><li>• Certified Super vault tanks constructed to SWRI standards: 30000 litres</li></ul>	<ul style="list-style-type: none"><li>• Certified Single skin tanks: 450 litres.</li><li>• Certified Double skin tanks: 10000 litres.</li><li>• Certified Super vault tanks constructed to SWRI standards: 30000 litres.</li></ul>	Certified double skin tank/s: 5200 litres
Flammable liquids (stored below ground)	3.1A, 3.1B, 3.1C, 3.1D	All	0							
Flammable liquids (any storage)	3.2A, 3.2B & 3.2C Liquid desensitised explosive: High, medium & low hazard	All	0							

**(IMPORTANT – Table 17.1 must be read with Notes for Plan Users and Permitted Activity Rule 17.5.1) [Amended by Plan Change 13, 2 September 2013]**

Substance	HSNO sub-class and hazard classification	Substance	Group 1: Residential Zones and residential activities in all other zones.	Group 2: Activity, Industry, Stadium, Proposed Harbourside Zones, excluding residential activities.	Group 3: Campus Zone, excluding residential activities.	Group 4: Rural and Rural Residential Zone, excluding residential, forestry and timber treatment activities.	Group 5: Forestry and timber treatment activities in the Rural and Rural Residential Zone.	Group 6: Port Zone, excluding residential activities.	Group 7: Airport Zone, excluding residential activities.	Group 8: Major Facilities (Mercy Hospital) Zone.
Flammable solids	4.1.1A Readily combustible solids and solids that may cause fire through friction: Medium hazard	All	0	50kg	50kg	50kg	50kg	50kg	50kg	0
	4.1.1B Readily combustible solids and solids that may cause fire through friction: Low hazard	All	0	500kg	500kg	500kg	500kg	500kg	500kg	0
	4.1.2A&B Self-reactive: Types A&B	All	0	50kg	50kg	50kg	50kg	50kg	50kg	0
	4.1.2C-G Self-reactive: Types C-G	All	0	500kg	500kg	500kg	500kg	500kg	500kg	0
	4.1.3A-C Solid desensitized explosives	All	0	0	5kg	0	0	0	0	0
Flammable solids	4.2A&B Spontaneously combustible – Pyrophoric substances: High hazard & Self-heating substances: Medium hazard	All	0	50kg	50kg	50kg	50kg	50kg	50kg	0
	4.2C Spontaneously combustible – Self-heating substances: Low hazard	All	0	500kg	500kg	500kg	500kg	500kg	500kg	0

**(IMPORTANT – Table 17.1 must be read with Notes for Plan Users and Permitted Activity Rule 17.5.1) [Amended by Plan Change 13, 2 September 2013]**

Substance	HSNO sub-class and hazard classification	Substance	Group 1: Residential Zones and residential activities in all other zones.	Group 2: Activity, Industry, Stadium, Proposed Harbourside Zones, excluding residential activities.	Group 3: Campus Zone, excluding residential activities.	Group 4: Rural and Rural Residential Zone, excluding residential, forestry and timber treatment activities.	Group 5: Forestry and timber treatment activities in the Rural and Rural Residential Zone.	Group 6: Port Zone, excluding residential activities.	Group 7: Airport Zone, excluding residential activities.	Group 8: Major Facilities (Mercy Hospital) Zone.
	4.3A&B Solids that emit flammable gas when wet: High & medium hazard	All	0	50kg	50kg	50kg	50kg	50kg	50kg	0
	4.3C Solids that emit flammable gas when wet: Low hazard	All	0	500kg	500kg	500kg	500kg	500kg	500kg	0
Flammable solids	4.2A&B Spontaneously combustible – Pyrophoric substances: High hazard & Self-heating substances: Medium hazard	All	0	50kg	50kg	50kg	50kg	50kg	50kg	0
	4.2C Spontaneously combustible – Self-heating substances: Low hazard	All	0	500kg	500kg	500kg	500kg	500kg	500kg	0
	4.3A&B Solids that emit flammable gas when wet: High & medium hazard	All	0	50kg	50kg	50kg	50kg	50kg	50kg	0
	4.3C Solids that emit flammable gas when wet: Low hazard	All	0	500kg	500kg	500kg	500kg	500kg	500kg	0



**(IMPORTANT – Table 17.1 must be read with Notes for Plan Users and Permitted Activity Rule 17.5.1) [Amended by Plan Change 13, 2 September 2013]**

Substance	HSNO sub-class and hazard classification	Substances	Group 1: Residential Zones and residential activities in all other zones.	Group 2: Activity, Industry, Stadium, Proposed Harbourside Zones, excluding residential activities.	Group 3: Campus Zone, excluding residential activities.	Group 4: Rural and Rural Residential Zone, excluding residential, forestry and timber treatment activities.	Group 5: Forestry and timber treatment activities in the Rural and Rural Residential Zone.	Group 6: Port Zone, excluding residential activities.	Group 7: Airport Zone, excluding residential activities.	Group 8: Major Facilities (Mercy Hospital) Zone.	
Oxidising substances	5.1.1A-C Liquids & solids	All	10 litres if liquid, 10kg if solid	200 litres if liquid, 200kg if solid	200 litres if liquid, 200kg if solid	No threshold	200 litres if liquid, 200kg if solid	200 litres if liquid, 200kg if solid	200 litres if liquid, 200kg if solid	10 litres if liquid, 10kg if solid	
	5.1.2A Gases	Oxygen (Except as stored and used in accordance with HSNO requirements within medical facilities)	5.5m <sup>3</sup>	1000m <sup>3</sup>	500m <sup>3</sup>	200m <sup>3</sup>	200m <sup>3</sup>	200m <sup>3</sup>	200m <sup>3</sup>	No limit if stored and used in accordance with HSNO requirements within medical facilities.	
		Nitrous oxide (Except as stored and used in accordance with HSNO requirements within medical facilities)	0	30 x 8-gram nitrous oxide cartridges for catering purposes only	0						No limit if stored and used in accordance with HSNO requirements within medical facilities.
		Chlorine	0								0
	5.2A-G Organic Peroxide: Types A-G	All – e.g. MEKP Polyester resin catalyst	0.5 litres	16 litres	0.5 litres	0.5 litres	0.5 litres	0.5 litres	0.5 litres	0.5 litres in addition to Steris 20 Concentrate: 70kg	
Toxic substances	6.1A-C Acutely toxic	Anhydrous ammonia refrigerant	0	140kg	0	0	0	140kg	140kg	0	
		Chlorine	0	0	0	0	0	0	0	0	
		All other substances	0	20 litres if liquid, 20kg if solid	20 litres if liquid, 20kg if solid	20 litres if liquid, 20kg if solid	20 litres if liquid, 20kg if solid	20 litres if liquid, 20kg if solid	20 litres if liquid, 20kg if solid	0	
	6.1D&E	Sodium Chloride	5kg	200kg	1000kg	1000kg	1000kg	1000kg	1000kg	5kg	
	6.1D&E	All other substances	1kg	200kg	1000kg	200kg	1000kg	1000kg	1000kg	1kg	

**(IMPORTANT – Table 17.1 must be read with Notes for Plan Users and Permitted Activity Rule 17.5.1) [Amended by Plan Change 13, 2 September 2013]**

Substance	HSNO sub-class and hazard classification	Substances	Group 1: Residential Zones and residential activities in all other zones.	Group 2: Activity, Industry, Stadium, Proposed Harbourside Zones, excluding residential activities.	Group 3: Campus Zone, excluding residential activities.	Group 4: Rural and Rural Residential Zone, excluding residential, forestry and timber treatment activities.	Group 5: Forestry and timber treatment activities in the Rural and Rural Residential Zone.	Group 6: Port Zone, excluding residential activities.	Group 7: Airport Zone, excluding residential activities.	Group 8: Major Facilities (Mercy Hospital) Zone.
Toxic substances	6.3A&B Skin irritant	All	1kg	2000kg	1000kg	2000kg	1000kg	1000kg	1000kg	1kg
	6.4A Eye irritant	Cement, Hydrated Lime and Burnt Lime	400kg	50 tonne	1000kg	30 tonne	30 tonne	100 tonne	1000kg	400kg
		Sodium Chloride	5kg	200kg	1000kg	1000kg	1000kg	1000kg	1000kg	5kg
		All Others	1kg	2000kg	1000kg	2000kg	1000kg	1000kg	1000kg	1kg
	6.5A&B Respiratory & contact sensitizers	Cement, Hydrated Lime and Burnt Lime	400kg	50 tonne	1000kg	30 tonne	30 tonne	100 tonne	1000kg	400kg
		All Others	1kg	2000kg	1000kg	2000kg	1000kg	1000kg	1000kg	1kg
	6.6A&B Human mutagens	All	1kg	2000kg	1000kg	2000kg	1000kg	1000kg	1000kg	1kg
	6.7A&B Carcinogens	All	1kg	200kg	1000kg	200kg	1000kg	1000kg	1000kg	1kg
	6.8A-C Human reproductive or developmental toxicants	All	0	0	0	0	0	0	0	0
Radioactive materials	6.9A&B Substances affecting human target organs or systems	All	0	0	0	0	0	0	0	0
	These substances are controlled through the Radiation Protection Act 1965 rather than through HSNO.	All	Quantities specified in the 'Type A' transport package limit, as identified in the International Atomic Energy Agency(IAEA) Regulations for the Safe Transport of Radioactive Material. Examples: domestic smoke detectors, demonstration radioactive sources in school laboratories.							

**(IMPORTANT – Table 17.1 must be read with Notes for Plan Users and Permitted Activity Rule 17.5.1) [Amended by Plan Change 13, 2 September 2013]**

Substance	HSNO sub-class and hazard classification	Substance	Group 1: Residential Zones and residential activities in all other zones.	Group 2: Activity, Industry, Stadium, Proposed Harbourside Zones, excluding residential activities.	Group 3: Campus Zone, excluding residential activities.	Group 4: Rural and Rural Residential Zone, excluding residential, forestry and timber treatment activities.	Group 5: Forestry and timber treatment activities in the Rural and Rural Residential Zone.	Group 6: Port Zone, excluding residential activities.	Group 7: Airport Zone, excluding residential activities.	Group 8: Major Facilities (Mercy Hospital) Zone.
Corrosives	8.1A Substances corrosive to metals	All	5 litres	1000 litres	1000 litres	1000 litres	5000 litres	1000 litres	1000 litres	5 litres
	8.2A-C Substances corrosive to skin	Cement, Hydrated Lime and Burnt Lime	400kg	50 tonne	1000kg	30 tonne	30 tonne	100 tonne	1000kg	400kg
		All	5 litres	1000 litres	1000 litres	1000 litres	5000 litres	1000 litres	1000 litres	5 litres
	8.3A Substances corrosive to the eye	Cement, Hydrated Lime and Burnt Lime	400kg	50 tonne	1000kg	30 tonne	30 tonne	100 tonne	1000kg	400kg
		All	5 litres	1000 litres	1000 litres	1000 litres	5000 litres	1000 litres	1000 litres	5 litres
Ecotoxics	9.1A-D Aquatic ecotoxics and 9.2A-D Soil ecotoxics		See base Class thresholds NB- Where a substance requires resource consent and also has an ecotoxic class, the ecotoxicity shall be taken into consideration as part of Assessment Matter 17.6.8							
	9.3A-C Terrestrial vertebrate ecotoxics	All	See base Class thresholds NB- Where a substance requires resource consent and also has an ecotoxic class, the ecotoxicity shall be taken into consideration as part of Assessment Matter 17.6.8							
	9.4 A-C Terrestrial invertebrate ecotoxics	All	See base Class thresholds NB- Where a substance requires resource consent and also has an ecotoxic class, the ecotoxicity shall be taken into consideration as part of Assessment Matter 17.6.8							



**Table 17.2: Class 3 Thresholds for Residential Activities and Activities Accessory to These (Thresholds Apply per Site)** *[Deleted by Plan Change 13, 2 September 2013]*

**Table 17.3: Class 3 Thresholds for All Other Activities (excluding Residential Activities)** *[Deleted by Plan Change 13, 2 September 2013]*

**Rule 17.5.2      Controlled Activities (Policy 17.3.8)**

The following activities are controlled activities:

- (i) Single vessel tank storage of HSNO sub-class 2.1.1A LPG, including *[Amended by Plan Change 13, 7 July 2012]*
  - (a) propane-based refrigerant, in below-ground or above-ground tanks; *[Added by Plan Change 13, 2 September 2013]*
  - (b) the storage of HSNO sub-class 2.1.1A LPG propane-based refrigerant in commercial refrigeration receivers, in quantities exceeding those permitted in Rule 17.5.1; and *[Added by Consent Order ENV-2012-CHC-99, 6 December 2012]*
  - (c) the storage of HSNO sub-class 3.1.A-D liquid petroleum fuels in belowground tanks; *[Added by Consent Order ENV-2012-CHC-99, 6 December 2012]*

is controlled in respect of:

- (a) Location and design of storage tanks.
- (b) Monitoring systems.
- (c) Emergency response plans.
- (d) Site security and containment.

**Assessment Matters** *[Amended by Plan Change 13, 2 September 2013]*

In assessing any application the Council will, in addition to the matters contained in the Fourth Schedule of the Act, have regard to:

- For storage of petrol and/or diesel, adherence to the Environmental Protection Authority (EPA) Approved Code of Practice HSNO COP 13-2, “Code of Practice for the Management of Existing Stationary Container Systems up to 60,000 litres Capacity”.
  - For storage of LPG, including siting of LPG facilities, adherence to the Hazardous Substances (Classes 1-5 Controls) Regulations 2001 and to AS/NZS 1596:2008 “The Storage and Handling of LP Gas”.
  - Any unusual soil or other underground conditions of the site which contribute to risks of tank or pipework failure.
  - The nature of activities and density of use in the vicinity of the site, including any potential for synergistic enhancement of risk from use on the same or adjacent sites of quantities of the same substance or the co-storage and/ or use of other hazardous substances.
- (ii) The storage in belowground tanks of HSNO sub-class 9.1A-D aquatic ecotoxics and/or HSNO sub-class 9.2A-D soil ecotoxics is controlled in respect of: *[Amended by Plan Change 13, 2 September 2013]*
    - (a) Location and design of storage tanks or cylinders.
    - (b) Monitoring systems.
    - (c) Emergency response plans.
    - (d) Site security and containment.

**Assessment Matters**

In assessing any application the Council will, in addition to the matters contained in the Fourth Schedule of the Act, have regard to:

- For storage of aquatic or soil ecotoxics, adherence to the Environmental Protection Authority (EPA) Approved Code of Practice HSNOCOP 13-2, “Code of Practice for the Management of Existing Stationary Container Systems up to 60,000 litres Capacity”. *[Amended by Plan Change 13, 2 September 2013]*
- (iii) The storage, use or transportation of radioactive materials not exceeding 100 times the quantities specified in the ‘Type A’ transport package limit (as identified in the International Atomic Energy Agency (IEAE) ‘Regulations for the Safe Transport of Radioactive Material’) is controlled in respect of: *[Amended by Plan Change 13, 2 September 2013]*
- (a) Location and design of facility.
  - (b) Monitoring systems.
  - (c) Emergency response plans.
  - (d) Site security and containment.
- (Example: industrial radiography)*

**Assessment Matters**

In assessing any application the Council will, in addition to the matters contained in the Fourth Schedule of the Act, have regard to:

- Adherence with requirements of the National Radiation Laboratory.
- The nature of activities and density of use in the vicinity of the site.

**Rule 17.5.3 Discretionary Activities (Restricted) (Policy 17.3.8)**

The following activities are discretionary activities (restricted):

- (i) The storage, use or transportation in the Group 6: Port Zone, which does not comply with Permitted Activity Rule 17.5.1. *[Amended by Plan Change 13, 2 September 2013]*

Council’s discretion under this rule is restricted to:

- (a) Matters relating to public safety.
- (b) Avoidance of environmental effects arising from potential spillage of hazardous substances stored.
- (c) Location and design of storage tanks.
- (d) Monitoring systems.
- (e) Emergency response plans.
- (f) Site security and containment.

**Rule 17.5.4 Discretionary Activities (Unrestricted) (Policy 17.3.8)**

The following activities are discretionary activities (unrestricted):

- (i) The storage, use or transportation of hazardous substances other than provided for in Rule 17.5.1, Rule 17.5.2 or Rule 17.5.3. *[Amended by Plan Change 13, 2 September 2013].*

In addition to an assessment of effects as contained in the Fourth Schedule of the Act, the Council will require applicants to prepare a site management plan and an emergency response plan to be submitted with any application for resource consent required under this rule.





## **17.6 Assessment of Resource Consent Applications:**

### **Hazardous Substances** [Amended by Plan Change 11, 11/10/10], [Amended by Plan Change 13, 2 September 2013]

In assessing any applications, in addition to the matters contained in the Fourth Schedule of the Act, the Council will have regard to, but not be restricted by the following matters:

#### **17.6.1 Intensity**

The nature and size of the development or activity.

#### **17.6.2 Nature of the Hazardous Substance**

The nature of the hazardous substance.

#### **17.6.3 Information**

Knowledge and understanding of the hazardous substance and its effects.

#### **17.6.4 HSNO Act 1996**

Ability to comply with the HSNO Act 1996.

#### **17.6.5 Location**

Location of the site or sub-facility with respect to population, services, schools, emergency services, hospitals and arterial routes.

#### **17.6.6 Design and location**

Location and design of storage tanks and associated plant.

#### **17.6.7 Transportation**

Ability to transport the hazardous substances to, and from, the facility in a safe and secure manner.

#### **17.6.8 Risk**

The sensitivity of the surrounding environment and the acceptable level of risk and includes the assessment of site management plans and emergency response plans.

#### **17.6.9 Consequences of Hazardous Substance**

Consequences to people, infrastructure and the environment of any failure, escape or activation of the hazardous substance.

#### **17.6.10 Cumulative Effects**

The cumulative effects on people, infrastructure and the environment arising from storing, using or disposing of hazardous substances.

#### **17.6.11 Alternative locations and methods**

Consideration of alternative locations and methods of storing, using or disposing of hazardous substances.

#### **17.6.12 Mitigation**

Whether mitigation measures are appropriate, reliable and able to be adequately monitored.

#### **17.6.13 Long Term Measures**

The long term performance and management requirements of protective or mitigation measures.

#### **17.6.14 Codes of Practice**

Industry codes of practice and other procedures which may be used to assess activities involving hazardous substances.

## ***17.6a Assessment of Resource Consent Applications: Hazards***

*[Inserted by Plan Change 13, 2 September 2013]*

In assessing any applications, in addition to the matters contained in the Fourth Schedule of the Act, the Council will have regard to, but not be restricted by the following matters:

### **17.6a.1 Intensity**

The nature and size of the development or activity.

### **17.6a.2 Nature of Hazard Substance**

The nature of the hazard.

### **17.6a.3 Information**

Knowledge and understanding of the hazard and its effects.

### **17.6a.4 Location**

Location with respect to population, services, schools, emergency services, hospitals and arterial routes.

### **17.6a.5 Mitigation**

Whether mitigation measures are appropriate and reliable.

### **17.6a.6 Risk**

The acceptable level of risk.

### **17.6a.7 Drainage**

Drainage of the area.

### **17.6a.8 Long Term Measures**

The long term performance and management requirements of protective or mitigation measures.

### **17.6a.9 Consequences of Hazard**

Consequences to people, infrastructure and the environment of any failure or activation of the hazard.

### **17.6a.10 Climate**

Climatic conditions.

### **17.6a.11 Suitability of Site**

How the applicant has addressed matters relating to natural hazards which may affect the suitability of the site for the proposed activity.

## **17.7 Rules: Earthworks**

*[Section inserted by Plan Change 11, 11/10/10]*

### **Note to Plan Users**

1. Except as specified in Rule 17.7.1, these rules apply to all land use activities in all District Plan zones, in addition to the zone standards.
2. All earthworks must comply with section 10 of the Historic Places Act 1993, which protects recorded, suspected and unrecorded archaeological sites from destruction, damage and modification.
3. For earthworks in Areas of Significant Conservation Value and other areas of coastal habitat, wetland, skink habitat and indigenous vegetation, see also Rules 16.5.5 and 16.6.2 of Section 16: Indigenous Vegetation and Fauna.
4. For earthworks in any area shown on District Plan Maps 75, 76 or 77 as 'High Class Soils', see also Rule 6.5.3(viii) of Section 6: Rural.
5. For earthworks within the canopy spread of any tree listed in Schedule 25.3, see also Rule 15.5.1(i) of Section 15: Trees.
6. Any earthworks that may intercept groundwater are likely to require resource consent from the Otago Regional Council. Certain other activities involving earthworks are also controlled through the Otago Regional Council Flood Protection Management Bylaw 2008, in the Regional Plan: Water for Otago and in the Regional Plan: Waste for Otago. Refer to the Otago Regional Council for details.
7. There are common law rights of adjacent landholders in respect of drainage and support of land. These rights apply irrespective of compliance with District Plan rules or any resource consent issued by the Council. These rights are a civil matter.
8. For earthworks that relate to an existing electricity transmission line, see also Regulations 33 to 36 of the Resource Management (National Environmental Standards for Electricity Transmission Activities) Regulations 2009.

### 17.7.1 Exempt Activities (Policy: 17.3.9)

The earthworks activities set out in Table 17.4 are regulated through rules in other sections of this Plan, Regional Plan rules or National Environmental Standards, and shall therefore be exempt from Rules 17.7.2 to 17.7.5.

**Table 17.4**

Activity	Mechanism through which this activity is controlled
Earthworks involved in subdivision, provided that detailed engineering plans for these earthworks have been expressly approved by the Council as part of the subdivision consent process.	Section 18: Subdivision Activity, Rules 18.5.1, 18.5.1A and 18.5.2
Scheduled mining and quarrying activities (excluding any excavation that takes place within a Groundwater Protection Zone identified on District Plan Map 6, 7, 8, 27, 28, 29, 30, 41, 42 or 53), provided that these activities comply with the relevant conditions set out in Rules 6.5.3, 6.5.8, 8.7.2 and 8.7.7.	Section 6: Rural, Rules 6.5.2(v), 6.5.3 and 6.5.8, and Section 8: Residential, Rules 8.7.1(v), 8.7.2 and 8.7.7.
Drilling or bore construction, as defined in the Regional Plan: Water for Otago as it is at 1 July 2010, (excluding the deposition of fill resulting from these activities).	Regional Plan: Water for Otago
Earthworks on the bed of any lake or river.	Regional Plan: Water for Otago
Excavation and use of composting pits, silage pits and silage stacks, as defined in the Regional Plan: Waste for Otago as it is at 1 July 2010.	Regional Plan: Waste for Otago
Excavation and use of offal pits, farm landfills and greenwaste landfills, as defined in the Regional Plan: Waste for Otago as it is at 1 July 2010.	Regional Plan: Waste for Otago
Operation of the Envirowaste Fairfield Landfill.	Section 6: Rural, Rule 6.5.8(v)(a) and Regional Plan: Waste for Otago
Earthworks associated with the operation, maintenance, upgrading, relocation or removal of existing National Grid High Voltage Transmission Lines as at 14 January 2010.	Resource Management (National Environmental Standards for Electricity Transmission Activities) Regulations 2009

### 17.7.2 Permitted Activities (Policy 17.3.9)

The following activities are permitted activities:

- (i) Earthworks that form part of one or more of the following activities:
  - a) Erection and/or maintenance of fences (excluding retaining walls) and of structures required for the support of overhead lines.
  - b) The driving in of piles for building foundations.
  - c) The cultivation of soil for crops, trees and pasture, and other accepted farming practices, such as mole ploughing and deep ripping, that are similar in effect to cultivation; the harvesting and clearance of crops, trees and noxious weeds; and shelter belt removal.
  - d) Maintenance of tracks, private roads, private ways, dams, farm yards and farm service areas.

- e) The extraction of aggregate within a farm or plantation forest, for the sole purpose of maintaining access within the same landholding (excludes any aggregate extraction that takes place within a Groundwater Protection Zone identified on District Plan Map 6, 7, 8, 27, 28, 29, 30, 41, 42 or 53).
- f) Maintenance of man-made drains, ditches and canals.
- g) Maintenance of defences against water, as defined in the Regional Plan: Water for Otago as it is at 1 July 2010.
- h) Maintenance of existing roads as provided for under Rule 20.5.1 of Section 20: Transportation.
- i) Earthworks associated with:
  - Utilities activities provided for under Rule 22.5.1 of Section 22: Utilities, subject to performance standards listed in Rule 22.5.2; and/or
  - The maintenance and operation of lawfully established utilities activities and electricity generation facilities, and associated infrastructure.
- j) Forestry earthworks carried out in accordance with the NZ Environmental Code of Practice for Plantation Forestry 2007, specifically Best Environmental Practices 2: Earthworks, 12: Historical and heritage management and 13: Historical and heritage site discovery.
- k) Retaining walls up to, and including, a maximum height of 600mm.

These earthworks are not subject to the performance standards set out in Rule 17.7.3.

- (ii) All earthworks that are not listed in Table 17.4 or provided for in Rule 17.7.2(i), provided that the works comply with Rules 17.7.3(i) to 17.7.3(vi).

### **17.7.3 Performance Standards for Permitted Activities** (*Policy 17.3.9*)

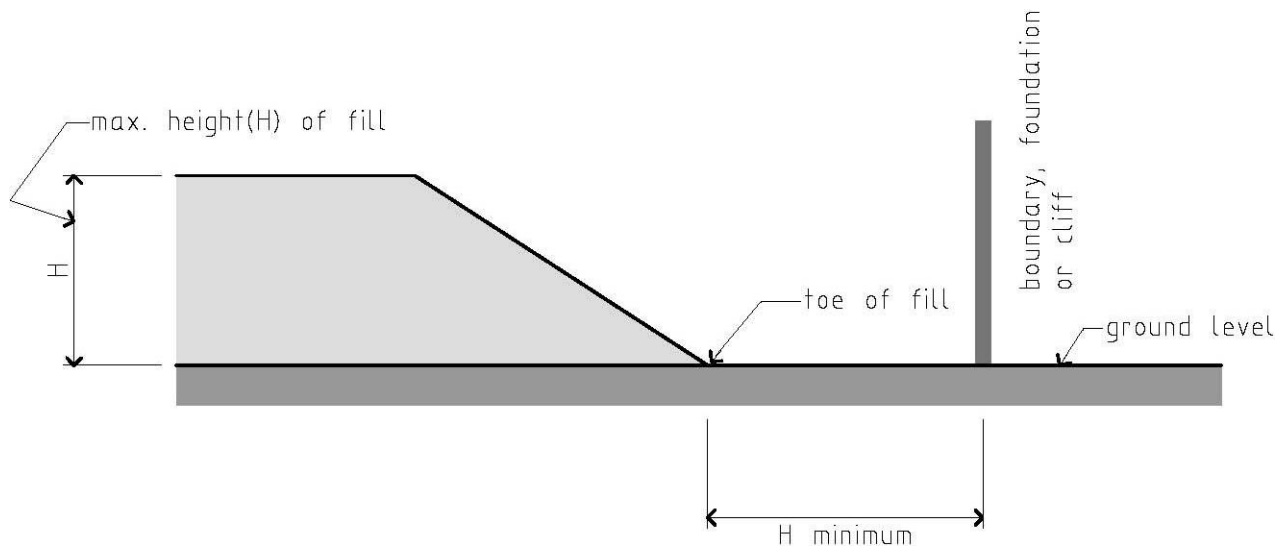
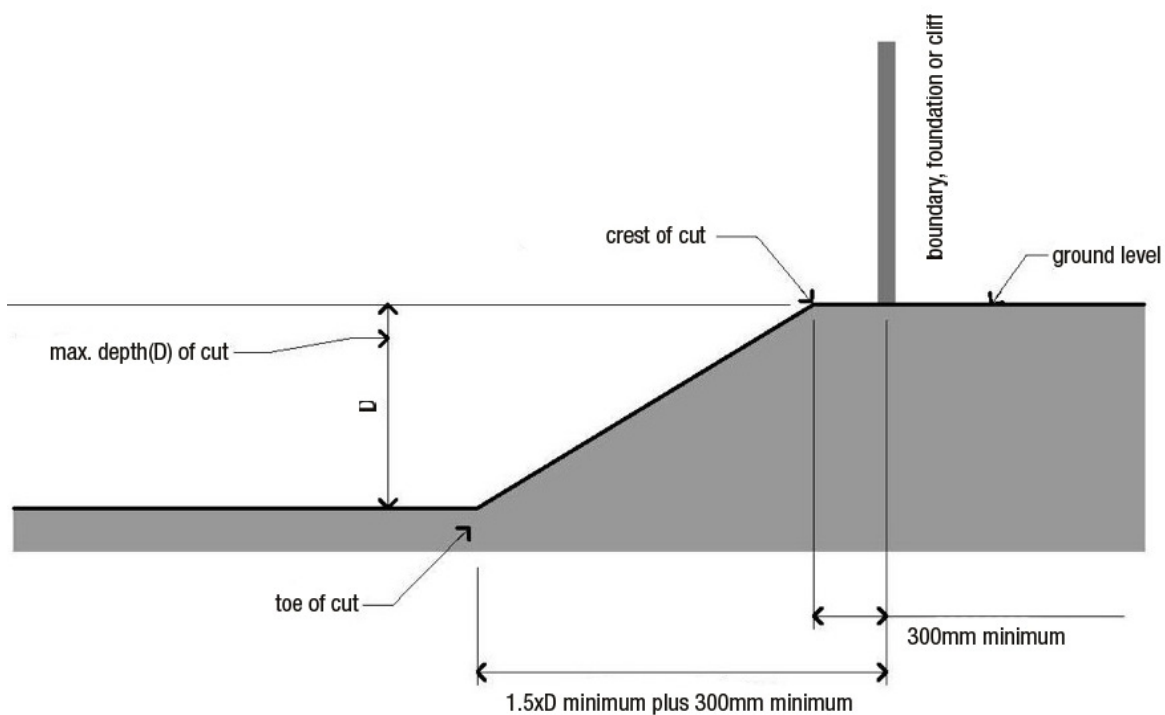
The following performance standards apply to activities permitted under Rule 17.7.2(ii):

- (i) **Minimum Setback Distance:**  
The minimum setback distances set out in 17.7.3(i)(a), (b) and (c) shall apply between earthworks over 600mm in height or depth and each of the following features:
  - Property boundary.
  - Foundation of any existing building.
  - The top or toe of any cliff (i.e. existing slope with an average gradient of over 63° or 1 to 2 horizontal to vertical ratio).

Minimum setback distances to the foundation of any existing building and to the top or toe of any cliff for any cut or fill, and minimum setback distances to the property boundary for any cut, apply only to earthworks that were not granted an earthworks permit prior to 1 July 2010 and that do not form part of a project that was granted building consent on or after 1 July 2010.

- (a) For earthworks not supported by a retaining wall the minimum setback distance:
  - (i) to the toe of any fill shall be at least equal to the maximum height of the fill (see Figure 17.1).
  - (ii) to the toe of any cut shall be at least equal to 1.5 times the maximum depth of the cut, plus a minimum of 300mm (see Figure 17.2).
  - (iii) to the crest of any cut shall be at least 300mm (see Figure 17.2).

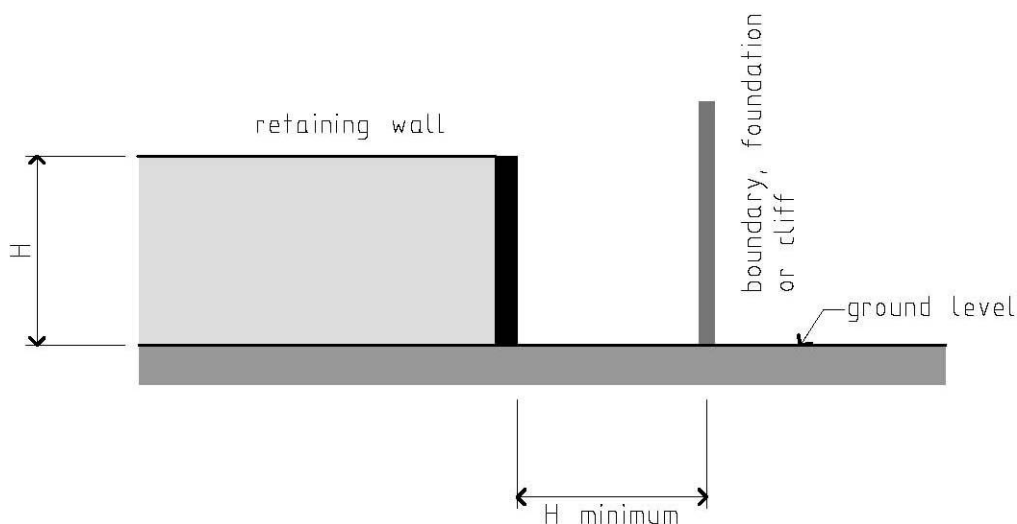
Note that this standard does not impose a maximum gradient for cut or fill batters.

**Figure 17.1 Unsupported fill (elevation view)****Figure 17.2 Unsupported cut (elevation view)**



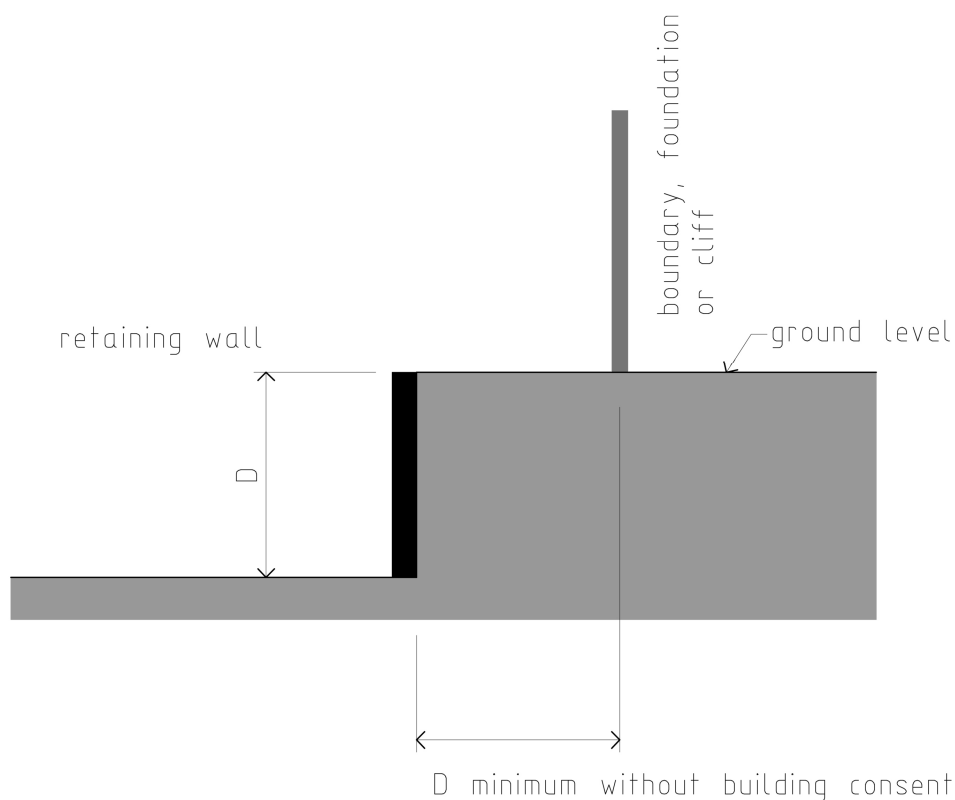
- (b) For retaining walls supporting fill, the minimum setback distance to the base of the retaining wall shall be at least equal to the maximum height of the retaining wall (see Figure 17.3).

**Figure 17.3 Fill supported by retaining wall (elevation view)**



- (c) (i) For retaining walls supporting a cut there shall be no minimum setback distance, provided that the retaining wall has been granted building consent.
- (ii) For retaining walls supporting a cut that have not been granted building consent, the minimum setback distance to the top of the retaining wall shall be at least equal to the maximum height of the retaining wall (see Figure 17.4).

**Figure 17.4 Cut supported by retaining wall (elevation view)**



## (ii) Scale Thresholds:

Earthworks shall not, within any consecutive 2 year period, exceed either the 'Change in ground level' threshold or the 'Volume of excavation and fill' threshold listed in Table 17.5 for the area or zone in which they are located. Note that Urban Landscape Conservation Areas (ULCAs) and Landscape Management Areas (LMAs) form overlays over planning zones. In these areas the thresholds specified in the table for ULCAs or LMAs, rather than those for the underlying planning zone, will apply. Where a site is partially covered by a ULCA or LMA, earthworks permitted in the remainder of the site shall be calculated based on the total area of the site, including the ULCA or LMA.

**Table 17.5**

Zone/area	Site size	Change in ground level	Volume of excavation and fill
Rural Zone	≤10ha	2.0m	200m <sup>3</sup>
	>10ha	2.0m	20m <sup>3</sup> /ha. Total volume of permitted earthworks may be carried out at any location within the site.
All other zones	≤2ha	1.5m	100m <sup>3</sup>
	>2ha	2.0m	200m <sup>3</sup>
Landscape Management Areas (LMAs)	Any	2.0m	200m <sup>3</sup>
Urban Landscape Conservation Areas (ULCAs)	Any	1m	10m <sup>3</sup>

## (iii) Distance from Water:

Earthworks shall not exceed 1m<sup>3</sup> in volume or 25m<sup>2</sup> in area in any of the following locations:

- (a) Within 20m of any natural surface water body with a clearly defined bed and a continual flow, or any wetland identified in Schedule 25.4 or in Schedule 9 or 10 of the Regional Plan: Water for Otago as it is at 1 July 2010, in the Rural Zone. If a wetland is marked on more than one of these schedules, the more extensive boundary of that wetland applies.
- (b) Within 7m of any natural surface water body with a clearly defined bed and a continual flow, or any wetland identified in Schedule 25.4 or in Schedule 9 or 10 of the Regional Plan: Water for Otago as it is at 1 July 2010, in any other zone. If a wetland is marked on more than one of these schedules, the more extensive boundary of that wetland applies.
- (c) Within 7m of the mean high water springs in any Residential or Activity Zone.

## (iv) Groundwater Protection Zones:

Within Groundwater Protection Zones as shown on District Plan Maps 6, 7, 8, 27, 28, 29, 30, 41, 42 and 53, excavations other than those required for roading or foundations for buildings shall not exceed 250mm in depth or 10m<sup>3</sup> in volume.

## (v) Distance from Water and Waste Infrastructure:

Earthworks shall be located at least 1.5m from the centreline of any Council-owned stormwater or foul sewer line, and at least 2.5m from the centreline of any Council-owned water mains.

- (vi) Distance from High Voltage Transmission Lines and Support Structures
- (a) Except for earthworks for new and/or existing network utilities, earthworks shall be located at least 12m from the closest visible edge of the foundation of a high voltage transmission line support structure as shown on District Plan Maps 4-6, 8-10, 16-19, 29-32, 45-47, 49 & 53.
  - (b) Except for earthworks for new and/or existing network utilities, earthworks that result in an increase in ground level shall be located at least 12m from the centreline of a high voltage transmission line as shown on District Plan Maps 4-6, 8-10, 16-19, 29-32, 45-47, 49 & 53.

#### **Rule 17.7.4 Controlled Activities** (*Policy 17.3.9*)

Except as specified in Rules 17.7.1, 17.7.2(i) and 17.7.5, earthworks shall be controlled activities in the following circumstances:

- (i) The earthworks do not comply with Rule 17.7.3(iv) 'Groundwater Protection Zones'.

These earthworks are controlled in respect of:

- (a) The nature and extent of the proposed work and the degree to which it may disturb the protective mantle over the Groundwater Protection Zone as identified on District Plan maps.
- (b) The extent to which the proposed works may increase the risk of groundwater contamination.

Conditions that may be imposed include, but are not limited to:

- (c) Minimising any adverse effects resulting from the disturbance of the protective mantle over the Groundwater Protection Zone.
- (d) The control of storm water run-off from the site and the reduction to an acceptable level of any silt, sediment or contaminant prior to entering any storm water pipes, drains, channels or soakage systems.
- (e) The control of vehicle movements and access to and from the site in relation to the earthworks operation.

- (ii) The earthworks do not comply with Rule 17.7.3(i) Minimum Setback Distance, with respect to the distance of cut from:

- Property boundary; and/or

With respect to the distance of cut or fill from:

- Foundation of any existing building.
- The top or toe of any cliff (i.e. existing slope with an average gradient of over 63° or 1 to 2 horizontal to vertical ratio).

These earthworks are controlled in respect of:

- (a) Design and engineering of retaining structures and earthworks.
- (b) Effects on the stability of land and buildings.
- (c) Effects on the surface flow of water and on flood risk.
- (d) Effects on underground utilities.

Conditions that may be imposed include, but are not limited to:

- (e) Maximum slopes of cut and fill batters.
- (f) Supervision and monitoring requirements for: retaining wall construction; standard earthworks construction; earthworks construction to NZS 4431:1989.

- (g) Measures to control flooding and erosion.
  - (h) Set-back distances from easements for underground services.
  - (i) Time to completion of works.
- (iii) The earthworks do not comply with Rule 17.7.3(ii) Scale Thresholds, but do not take place within any Urban Landscape Conservation Area (ULCA) or Landscape Management Area (LMA), and do comply with the following standards:
- (a) Scale Thresholds:  
Earthworks shall not, within any consecutive 12 month period, exceed either the 'Change in ground level' threshold or the 'Volume of excavation and fill' threshold listed in Table 17.6 for the area or zone in which they are located. Where a site is partially covered by a ULCA or LMA, the site size shall be taken to be the total area of the site, including the ULCA or LMA.

**Table 17.6**

Zone/area	Site size	Change in ground level	Volume of excavation and fill
Rural Zone	≤10ha	2.5m	1000m <sup>3</sup>
	>10ha	2.5m	100m <sup>3</sup> /ha. Total volume of earthworks may be carried out at any location within the site (subject to controls on earthworks in ULCA's and LMAs).
All other zones	Any	2.0m	250m <sup>3</sup>

- (b) Compliance with the Historic Places Act 1993:  
If the earthworks require an archaeological authority under the Historic Places Act 1993, the archaeological authority has been granted.
- (c) Compliance with recommendations of archaeological assessment:  
If the earthworks are to be located in an area where archaeological material is considered likely to be found (e.g. due to the history of the site and/or the presence of recorded archaeological sites within 100m of the earthworks), an archaeological assessment has been carried out by a suitably qualified person, and the proposal complies with the recommendations of the archaeological assessment.
- (d) Compliance with recommendations of tangata whenua:  
If the earthworks would affect a cultural site, tangata whenua have been notified and consulted with, and the proposal complies with any recommendations made by tangata whenua in relation to effects on the cultural site.

These earthworks are controlled in respect of:

- (e) Effects from noise, dust and vibration.
- (f) Effects on any archaeological or cultural site.
- (g) Effects from the release of sediment beyond site boundaries, including transport of sediment by stormwater systems.
- (h) Visual effects.

For earthworks that were not granted an earthworks permit prior to 1 July 2010 and that do not form part of a project that was granted building consent on or after 1 July 2010, the Council's control will also extend to the following matters:

- (i) Design and engineering of retaining structures and earthworks.
- (j) Effects on the stability of land and buildings.
- (k) Effects on the surface flow of water and on flood risk.
- (l) Effects on underground utilities.

Conditions that may be imposed include, but are not limited to:

- (m) Measures to control noise, dust and vibration.
- (n) Conditions relating to compliance with an archaeological authority and/or archaeological assessment.
- (o) Conditions to implement recommendations from tangata whenua in relation to cultural sites.
- (p) Compliance with an Accidental Discovery Protocol.
- (q) Measures to control sedimentation.
- (r) Measures to minimise adverse visual effects, e.g. requirements for revegetation and/or landscaping.

For earthworks that were not granted an earthworks permit prior to 1 July 2010 and that do not form part of a project that was granted building consent on or after 1 July 2010, conditions that may be imposed also include, but are not limited to:

- (s) Maximum slopes of cut and fill batters.
- (t) Supervision and monitoring requirements for: retaining wall construction; standard earthworks construction; earthworks construction to NZS 4431:1989.
- (u) Specific measures to control flooding and erosion.
- (v) Set-back distances from easements for underground services.
- (w) Time to completion of works.

### **Rule 17.7.5 Discretionary Activities (Restricted) (Policy 17.3.9)**

Except as specified in Rules 17.7.1 and 17.7.2(i), earthworks shall be discretionary (restricted) activities in the following circumstances:

- (i) The earthworks do not comply with Rule 17.7.3(i) Minimum Setback Distance, with respect to the distance of fill from the property boundary.

The Council's discretion under this rule is restricted to:

- (a) Adverse effects on the amenity of neighbouring properties.

For earthworks that were not granted an earthworks permit prior to 1 July 2010 and that do not form part of a project that was granted building consent on or after 1 July 2010, the Council's discretion will also extend to the following matters:

- (b) Design and engineering of retaining structures and earthworks.
- (c) Effects on the stability of land and buildings.
- (d) Effects on the surface flow of water and on flood risk.
- (e) Effects on underground utilities.

In assessing these effects, the Council will have regard to the matters in 17.8.1 and 17.8.2.

- (ii) The earthworks do not comply with either Rule 17.7.3(ii) Scale Thresholds or Rule 17.7.4(iii).

The Council's discretion under this rule is restricted to:

- (a) Adverse effects on the amenity of neighbouring properties.
- (b) Effects on visual amenity and landscape.
- (c) Effects on any archaeological site and/or any cultural site.
- (d) Effects on the transportation network, caused by the transport of excavated material or fill.
- (e) Effects from the release of sediment beyond site boundaries, including transport of sediment by stormwater systems.
- (f) Cumulative effects relating to any of these matters.

For earthworks that were not granted an earthworks permit prior to 1 July 2010 and that do not form part of a project that was granted building consent on or after 1 July 2010, the Council's discretion will also extend to the following matters:

- (g) Design and engineering of retaining structures and earthworks.
- (h) Effects on the stability of land and buildings.
- (i) Effects on the surface flow of water and on flood risk.
- (j) Effects on underground utilities.

In assessing these effects, the Council will have regard to the matters in 17.8.1 to 17.8.6.

- (iii) The earthworks do not comply with Rule 17.7.3(iii) Distance from Water.

The Council's discretion under this rule is restricted to:

- (a) Sedimentation of the nearby surface water body/bodies or coastal water.
- (b) Inundation or erosion of land caused by the alteration of the direction, rate or depth of flow of the nearby surface water body/bodies.

In assessing these effects, the Council will have regard to the matters in 17.8.6 and 17.8.7.

- (iv) The earthworks do not comply with Rule 17.7.3(v) Distance from Water and Waste Infrastructure.

The Council's discretion under this rule is restricted to effects on the integrity of water, stormwater and/or foul sewer reticulation.

In assessing these effects, the Council will have regard to the matters in 17.8.8.

- (v) The earthworks do not comply with Rule 17.7.3(vi) Distance from High Voltage Transmission Lines and Support Structures.

The Council's discretion under this rule is restricted to:

- (a) Any effects on the integrity of the transmission line.
- (b) Volume, area and location of the works, including temporary activities such as stockpiles.
- (c) Timing of the works.
- (d) Site remediation.
- (e) The use of mobile machinery near the transmission line which may put the line at risk.
- (f) Compliance with the NZ Electrical Code of Practice for Electrical Safe Distances 34:2001.

In assessing these effects, the Council will have regard to the matters in 17.8.9.

## ***17.8 Assessment of Resource Consent Applications: Earthworks***

*[Section inserted by Plan Change 11, 11/10/10]*

In assessing any applications, in addition to the matters contained in the Fourth Schedule of the Act, the Council will have regard to, but not be restricted by the following matters:

### **17.8.1 Effects on stability and flood risk**

- (a) Whether excavation, fill and retaining structures are to be designed, and the work undertaken, in accordance with engineering standards.
- (b) Whether the earthworks will have adverse effects on the stability of land or buildings.
- (c) Whether the earthworks will disrupt the surface flow of water and/or increase the risk of flooding.
- (d) Whether the earthworks will disrupt, or obstruct access to, underground utilities.
- (e) Whether a geotechnical report has been supplied to assess the stability of the earthworks. A geotechnical report may be requested by the Council for earthworks of a large scale and/or where the earthworks are proposed:
  - On a site with a gradient  $>18.5^\circ$  (1 in 3);
  - On a site identified as hazard-prone in the Hazards Register; or
  - On any other site that the Council, with good cause, suspects to be hazard-prone.

### **17.8.2 Effects on neighbours**

- (a) Whether the earthworks and retaining structures will adversely affect the amenity of neighbouring properties during or after construction, through reduction in visual amenity, loss of privacy, shading, noise, vibration, dust, mud or any other effect.
- (b) The likely duration of any adverse effect.
- (c) Proposed measures for avoiding, remedying or mitigating these effects.

### **17.8.3 Effects on visual amenity and landscape**

- (a) Whether the scale and location of the earthworks and retaining structures will adversely affect the visual amenity and/or landscape values of the surrounding area, including:
  - The extent to which any alteration to the natural landform is minimised;
  - The extent to which any cut or fill can be restored or treated to resemble natural landforms;
  - The extent to which any earthworks will remove or impact upon existing vegetation or landscaping.
- (b) Within a Landscape Management Area, whether the works will adversely affect the special features and characteristics of that area identified in Section 14: Landscape.
- (c) The likely duration of any adverse effect.
- (d) Proposed measures for the rehabilitation of the site.
- (e) The objectives, policies and assessment matters of Section 14: Landscape.
- (f) Objective 13.2.1 and Policy 13.3.1 of Section 13: Townscape.

**17.8.4 Effects on archaeological and cultural sites**

- (a) Whether the site contains waahi taoka, or waahi tapu or koiwi tangata, and if so whether tangata whenua have been notified and consulted with.
- (b) Whether the site contains a recorded, suspected or unrecorded archaeological site, and if so whether any necessary archaeological authority has been obtained from the NZ Historic Places Trust.
- (c) Whether the earthworks are located in an area where archaeological material is considered likely to be found (e.g. due to the history of the site and/or the presence of recorded archaeological sites within 100m of the earthworks), and if so whether an archaeological assessment has been carried out.
- (d) The results of any archaeological assessment, and proposals for carrying out any recommendations made in that assessment.
- (e) The objectives and policies of Section 5: Manawhenua.

**17.8.5 Effects on the transportation network**

- (a) Whether the transportation of excavated material or fill is likely to result in adverse effects on the transportation network.
- (b) Proposed measures for managing these effects.
- (c) The objectives, policies and assessment matters of Section 20: Transportation.

**17.8.6 Sedimentation effects**

- (a) Whether and to what extent the earthworks are likely to result in erosion and the release of sediment beyond site boundaries.
- (b) Whether and to what extent the earthworks are likely to result in sedimentation of nearby surface water bodies, coastal water or stormwater networks.
- (c) Whether proposed sediment and erosion control techniques are adequate to ensure that sediment remains on site and away from surface water bodies, coastal water and stormwater networks.

**17.8.7 Effects on the flow of water bodies**

- (a) Whether and to what extent the earthworks, through the alteration of the direction, rate or depth of flow of nearby surface water bodies, are likely to cause inundation and/or erosion of land.
- (b) Proposed measures for avoiding, remedying or mitigating these effects.

**17.8.8 Effects on water and waste infrastructure**

- (a) Whether the retaining wall or its foundations will undermine the integrity of reticulated water, stormwater and/or foul sewer networks.
- (b) Whether the Dunedin City Council Water and Waste Services department has provided written approval for the proposed works.



### **17.8.9        Effects on the National Grid**

- (a)     Effects on the ability of the transmission line owner to operate, maintain and upgrade the high voltage transmission network.
- (b)     Outcomes of any consultation with Transpower New Zealand Ltd.
- (c)     Risk to public health and safety.

## **17.9 Anticipated Environmental Results** *[Numbering amended by Plan Change 11, 11/10/10]*

The anticipated environmental results are:

### **17.9.1**

The avoidance or mitigation of adverse effects resulting from natural hazards on infrastructure, the physical environment, and people's health and safety.

*Objective: 17.2.1*

### **17.9.2**

The prevention or mitigation of adverse effects of the storage, use, disposal or transportation of hazardous substances.

*Objective: 17.2.2*

### **17.9.3**

Earthworks do not result in loss of life or injury, or in damage to property. *[Inserted by Plan Change 11, 11/10/10]*

*Objective: 17.2.3*

### **17.9.4**

Earthworks do not cause sedimentation of surface water bodies, coastal water or stormwater networks, or contamination of groundwater. *[Inserted by Plan Change 11, 11/10/10]*

*Objective: 17.2.3*

### **17.9.5**

Earthworks do not cause adverse visual impacts, and do not result in loss of or damage to natural landforms, vegetation, habitats, or archaeological sites. *[Inserted by Plan Change 11, 11/10/10]*

*Objective: 17.2.3*