



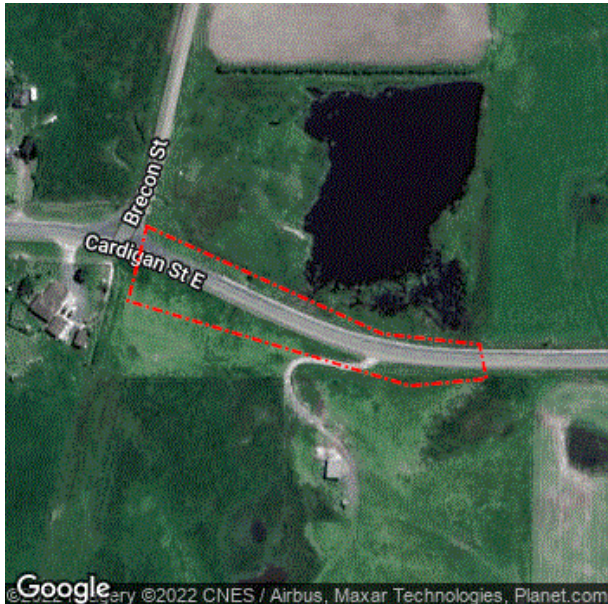
Caller Details

Contact: Mr Michael Tannock
Company: Dunedin City Council
Address: 50 The Octagon
 Dunedin Dunedin 9054

Caller Id: [REDACTED] **Phone:** [REDACTED]
Mobile: [REDACTED] **Fax:** Not Supplied
Email: [REDACTED]

Dig Site and Enquiry Details

WARNING: The map below only displays the location of the proposed dig site and does not display any asset owners' pipe or cables. The area highlighted has been used only to identify the participating asset owners, who will send information to you directly.



User Reference: election sign service check
Working on Behalf of: Dunedin City Council
Enquiry Date: 21/06/2022 **Start Date:** 24/06/2022 **End Date:** 31/10/2022
Address: Brecon St
 Middlemarch Middlemarch 9596
For Planning: Yes **Onsite Activity:** Fencing/Post Driving
Plans Requested: Yes
Workplace Location: Both **Location in Road:** Berm
Locate Requested: No **Preferred Locate Date:** Not Supplied

- Check that the location of the dig site is correct. If not you must submit a new enquiry.
- Should the scope of works change, or plan validity dates expire, you must submit a new enquiry.
- Do NOT dig without plans. Safe excavation is your responsibility. If you do not understand the plans or how to proceed safely, please contact the relevant asset owners.

Notes/Description of Works:

election sign service check

Your Responsibilities and Duty of Care

- If plans are **NOT** received within **TWO WORKING DAYS**, do not start work, contact the asset owner(s) directly & quote their Sequence No.
- **ALWAYS** perform an onsite inspection for the presence of assets. Should you require an onsite location, contact the asset owners directly. Please remember, plans do not detail the exact location of assets.
- **Pothole to establish the exact location of all underground assets using a hand shovel, before using heavy machinery.**
- Ensure you adhere to any legislative requirements regarding Duty of Care and safe digging requirements.
- If you damage an underground asset you **MUST** advise the asset owner immediately.
- By using the beforeUdig service, you agree to our privacy policy and the terms and conditions set out at www.beforeudig.co.nz
- **For more information about the beforeUdig service, visit www.beforeudig.co.nz**

Asset Owner Details

The assets owners listed below have been requested to contact you with information about their asset locations within 2 working days. Additional time should be allowed for information issued by post. It is **your responsibility** to identify the presence of any underground assets in and around your proposed dig site. Please be aware, that not all asset owners are registered with the beforeUdig service, this confirmation will not provide details of those asset owners so it is **your responsibility** to identify and contact directly any asset owners not listed here. Known Non-Member Utilities are listed on the beforeUdig website under the 'Utilities & Members' Tab.

Any asset owner name listed below with the status 'Not Notified' is an associate member of beforeUdig, which **ONLY NOTIFIES YOU** they may have assets present. You will need to contact them directly to obtain information about the location of their assets.

Where an Asset Locate has been requested, asset owners who provide Locate services will endeavour to respond to your preferred locate date, where possible. However, asset owners may complete the Locate at their convenience.

Locates are supplied by individual asset owners, NOT beforeUdig. EACH asset owner may charge a fee for Location services – it is your responsibility to discuss this directly with EACH utility, prior to the service being provided.

Asset owners highlighted by asterisks ** **Do Not** supply plans and/or information regarding the existence of underground assets on private property.

Asset owners highlighted with a hash request you reference their attachment for further instructions on how to obtain plans.

Seq. No.	Authority Name	Phone	Status
10441266	Chorus **	0800822003	Notification Sent
10441264	Dunedin City Council – Water & Waste	034774000	Not Notified
10441265	Powernet	032111899	Notification Sent

END OF UTILITIES LIST

From: powernet@ticketaccess.pcgcs.nz
Sent: Tuesday, 21 June 2022 4:49 pm
To: Michael Tannock
Subject: beforeUdig Response for Job No 2043939, Sequence No 10441265
Attachments: 10441265 PowerNet Response Plan.pdf; Obstruction Plan Terms of Use.pdf



PowerNet Limited

251 Racecourse Road
PO Box 1642
Invercargill 9840

Date: 21 Jun 2022

To: Mr Michael Tannock

Please DO NOT SEND A REPLY to this email as it has been automatically generated and replies are not monitored.

Re: Power Cable Location/Power Plan Request

SEQUENCE NO.:	10441265
LOCATION:	Brecon St Middlemarch Otago 9596
POWERNET REGION:	RANFURLY-PALMERSTON

WARNING: When working in the vicinity of PowerNet's assets you have a legal Duty of Care that must be observed.

When working near PowerNet controlled assets, you must observe safe working distances, and when working within those distances, request permission to do so by filling out a [Close Approach Permit](#). A table of the safe working distances for working around cables is on this form (see section 10).

For Power cable location services please call PowerNet on [03 2111 899](tel:03-2111-899). State the Region described above and the receptionist will forward you to the Area Administrator, who will take your details and organise the cable location services. Alternatively, you can organise your own cable location services if you have a preferred supplier.

PLEASE NOTE:

1. Power Cable Location services will not take place unless you contact a cable location services provider.
2. If your preference is to use PowerNet as your preferred supplier and you call PowerNet, please quote the region described above to be put through to the correct area administrator.

3. Ensure you review all other documents included with this response for additional details.
4. Cable location plans and field markings are valid for 28 days from the date of the reply to your request.
5. Some plans may be produced and not show any cables. Should you believe there could be cables in the vicinity of your works, please don't hesitate to call for cable location services.
6. 48 hours' notice is essential for all locates.

If you notice damage to Cables, Lines, Line supports or Bare Earth wires, keep well clear and notify PowerNet immediately on [0800 808 587](tel:0800808587)

Regards, PowerNet Cable Location Team

Phone 03 2111 899

Web: powernet.co.nz

PowerNet BeforeUDig enquiries Email: CableLocationEnquiries@powernet.co.nz

To best manage the risk of damage and liability, we recommend that you engage the services of a [beforeUdig Certified Locator](#)

Important Notice

This enquiry response, including any associated documentation, has been assessed and compiled from the information detailed within the beforeUdig enquiry outlined above. **Please ensure that the beforeUdig enquiry details and this response accurately reflect your proposed works.**

This response is intended for use only by the addressee. If you have received the enquiry response in error, please let us know by telephone and delete all copies; you are advised that copying, distributing, disclosing or otherwise acting in reliance on the response is expressly prohibited.

Disclaimer: While reasonable measures have been taken to ensure the accuracy of the information contained in this plan response, neither PowerNet nor PelicanCorp shall have any liability whatsoever in relation to any loss, damage, cost or expense arising from the use of this plan response or the information contained in it or the completeness or accuracy of such information. Use of such information is subject to and constitutes acceptance of these terms.

If you are unable to launch any of the files for viewing and printing, you may need to download and install free viewing and printing software such as [Adobe Acrobat Reader \(for PDF files\)](#)

PelicanCorp

Compiled with TicketAccess by PelicanCorp





LEGEND

- Underground Cables
- Streetlight
 - 400 Volt Network
 - 400 Volt Service
 - 6,350 - 22,000 Volt
 - 33,000/66,000 Volt
 - Comms/Fibre Optic
 - Running Earth
- Symbols
- Streetlight
 - Poles
 - Tower & Pylon
 - Stay/Guy
 - Pillars/Linkboxes
 - Ground Mounted Equipment
 - Earth
 - Duct

Important Information
Please ensure that PDF's are printed in colour and to the correct PDF page size

READ THE OBSTRUCTION PLANS TERMS OF USE

If you notice damage to Cables, Lines, Line Supports or Bare Earth wires, keep well clear and notify PowerNet immediately on
0800 808 587



SCALE: 1:1025 on A3

DISCLAIMER: While reasonable measures have been taken to ensure the accuracy of the information contained in this plan response, neither PowerNet or PelicanCorp shall have any liability whatsoever in relation to any loss, damage, cost or expense arising from the use of this plan response or the information contained in it or the completeness or accuracy of such information. Use of such information is subject to and constitutes acceptance of these terms.



LEGEND

- Underground Cables
- Streetlight
 - 400 Volt Network
 - 400 Volt Service
 - 6,350 - 22,000 Volt
 - 33,000/66,000 Volt
 - Comms/Fibre Optic
 - Running Earth
- Symbols
- Streetlight
 - Poles
 - Tower & Pylon
 - Stay/Guy
 - Pillars/Linkboxes
 - Ground Mounted Equipment
 - Earth
 - Duct

Important Information
Please ensure that PDF's are printed in colour and to the correct PDF page size

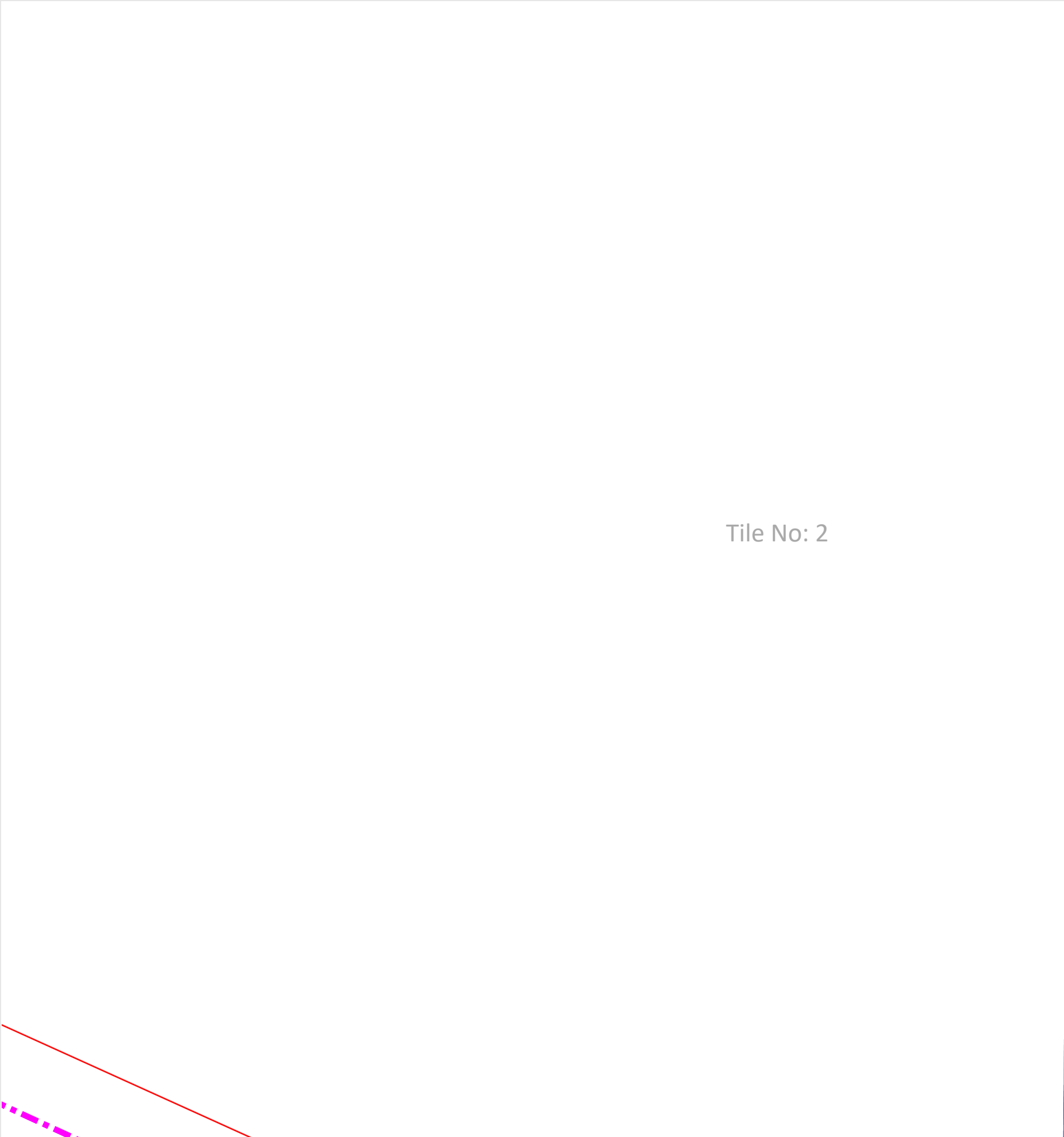
READ THE OBSTRUCTION PLANS TERMS OF USE

If you notice damage to Cables, Lines, Line Supports or Bare Earth wires, keep well clear and notify PowerNet immediately on
0800 808 587



SCALE: 1:500 on A3

DISCLAIMER: While reasonable measures have been taken to ensure the accuracy of the information contained in this plan response, neither PowerNet or PelicanCorp shall have any liability whatsoever in relation to any loss, damage, cost or expense arising from the use of this plan response or the information contained in it or the completeness or accuracy of such information. Use of such information is subject to and constitutes acceptance of these terms.



Tile No: 2

LEGEND

- Underground Cables
- Streetlight
 - 400 Volt Network
 - 400 Volt Service
 - 6,350 - 22,000 Volt
 - 33,000/66,000 Volt
 - Comms/Fibre Optic
 - Running Earth

Symbols

- Streetlight
- Poles
- Tower & Pylon
- Stay/Guy
- Pillars/Linkboxes
- Ground Mounted Equipment
- Earth
- Duct

Important Information

Please ensure that PDF's are printed in colour and to the correct PDF page size

READ THE OBSTRUCTION
PLANS TERMS OF USE

If you notice damage to Cables,
Lines, Line Supports or Bare Earth
wires, keep well clear and notify
PowerNet immediately on

0800 808 587



SCALE: 1:500 on A3

DISCLAIMER: While reasonable measures have been taken to ensure the accuracy of the information contained in this plan response, neither PowerNet or PelicanCorp shall have any liability whatsoever in relation to any loss, damage, cost or expense arising from the use of this plan response or the information contained in it or the completeness or accuracy of such information. Use of such information is subject to and constitutes acceptance of these terms.



LEGEND

- Underground Cables
- Streetlight
 - 400 Volt Network
 - 400 Volt Service
 - 6,350 - 22,000 Volt
 - 33,000/66,000 Volt
 - Comms/Fibre Optic
 - Running Earth
- Symbols
- Streetlight
 - Poles
 - Tower & Pylon
 - Stay/Guy
 - Pillars/Linkboxes
 - Ground Mounted Equipment
 - Earth
 - Duct

Important Information
Please ensure that PDF's are printed in colour and to the correct PDF page size

READ THE OBSTRUCTION PLANS TERMS OF USE

If you notice damage to Cables, Lines, Line Supports or Bare Earth wires, keep well clear and notify PowerNet immediately on
0800 808 587



SCALE: 1:500 on A3

DISCLAIMER: While reasonable measures have been taken to ensure the accuracy of the information contained in this plan response, neither PowerNet or PelicanCorp shall have any liability whatsoever in relation to any loss, damage, cost or expense arising from the use of this plan response or the information contained in it or the completeness or accuracy of such information. Use of such information is subject to and constitutes acceptance of these terms.

Underground Cables

- — — — — Streetlight
- — — — — 400 Volt Network
- — — — — 400 Volt Service
- — — — — 6,350 - 22,000 Volt
- — — — — 33,000/66,000 Volt
- — — — — Comms/Fibre Optic
- — — — — Running Earth

Symbols

- | | |
|--|--------------------------|
| | Streetlight |
| | Poles |
| | Tower & Pylon |
| | Stay/Guy |
| | Pillars/Linkboxes |
| | Ground Mounted Equipment |
| | Earth |
| | Duct |

Important Information

Please ensure that PDF's are printed in colour and to the correct PDF page size

READ THE OBSTRUCTION
PLANS TERMS OF USE

If you notice damage to Cables, Lines, Line Supports or Bare Earth wires, keep well clear and notify PowerNet immediately on

0800 808 587



SCALE: 1:500 on A3

DISCLAIMER: While reasonable measures have been taken to ensure the accuracy of the information contained in this plan response, neither PowerNet or PelicanCorp shall have any liability whatsoever in relation to any loss, damage, cost or expense arising from the use of this plan response or the information contained in it or the completeness or accuracy of such information. Use of such information is subject to and constitutes acceptance of these terms.

From: Chorus NPG Team <npg@chorus.co.nz>
Sent: Tuesday, 21 June 2022 4:49 pm
To: Michael Tannock
Subject: Chorus Enquiry 03503572 - Brecon St - Sequence 10441266



Hi Michael Tannock,

We've completed your request about our underground network. You can now access our network plans online by viewing the links below.

If you have any questions or require assistance in any way please contact us on [0800 822 003](tel:0800822003) and quote case number **03503572**.

REQUEST DETAILS

Chorus Reference: 03503572
B4UDig Reference: 10441266
Location: Brecon St, Middlemarch
Date Plans Issued: 21 June 2022
Number of Plans Issued: 1
Additional Information: **Caution: There is High Capacity and/or Fibre Network in the area provided on the plan(s).**

NETWORK PLANS

Please click the link(s) below to access 1 electronic plans

- [143806-HA29](#)

Click here to
download our
Network Glossary

Note:

These links will expire in 45 days, so please download these to your own device for your records.

THINGS YOU SHOULD KNOW

- Our network changes often so you can check with us at any time to ensure your plans are current. Regardless the plan links you have been provided will expire after 45 days. The plans are indicative only and remember:
 - **Cables should be expected to be found at ANY depth.**
- In most instances Chorus plans do NOT show house service feeds on private property.
- Chorus plans are **NOTIONAL** only, and they should **NOT** be relied upon to obtain distances, reference points and cover may well have changed or the services, particularly cables moved without the knowledge or authority of Chorus since the plan was drawn.
- This information is provided solely for use by the original requester and for the purpose of this request only. It cannot be shown, loaned, given, reproduced or sold to any other party for any other work, other than for the purpose that this request was made, without written permission from Chorus.
- Onsite cable location and ground mark-outs are available, please contact us to book this service and to confirm any approximate charges associated.
- Cable Locates are \$144.56+GST for the first hour, \$36.14+GST every 15 minutes after – the only exception is shared network on Private Property
- To report damage to our network, cut cables, damaged cabinets, or pillars, please call [0800 4 NETWORK](tel:08004NETWORK) (0800 463 896 Option 2). If cable damage has been caused by irresponsibility, carelessness or negligence we will bill the organisation or individual responsible.

HELP AND SUPPORT

- [Contact Us](#)
- [Before you dig](#)
- [Digging for Homeowners](#)
- [How to ensure safer digging](#)
- [NZUAG Road Workers Guide](#)

Cheers,

Chorus Network Protection Team

Network Protection

0800 822 003

Chorus New Zealand Ltd

npg@chorus.co.nz

This communication, including any attachments, is confidential. If you are not the intended recipient, you should not read it - please contact me immediately, destroy it, and do not copy or use any part of this communication or disclose anything about it. Thank you. Please note that this communication does not designate an information system for the purposes of the Electronic Transactions Act 2002.