

From: Jenny Lapham
To: [REDACTED]
Subject: Local Government Official Information Request
Date: Friday, 22 February 2019 11:49:00 a.m.
Attachments: [Information.pdf](#)

Dear [REDACTED]

I refer to your e-mail of 7 February 2019 requesting information relating to the hospitality industry. Please find attached the information as requested.

If you have any queries regarding this information please contact our Business Relationship Manager, Des Adamson.

E-mail: Des.Adamson@dcc.govt.nz

Regards

Jennifer Lapham
Governance Support Officer
Dunedin City Council

50 The Octagon, Dunedin; P O Box 5045, Dunedin 9054, New Zealand

Telephone: 03 477 4000; Fax: 03 474 3594

Email: jlapham@dcc.govt.nz; www.dunedin.govt.nz



Please consider the environment before printing this e-mail

INDUSTRY PROFILER

The Industry Profiler enables you to focus in on a key industry and understand its characteristics in Dunedin City. You can either use predefined industry categories or define your own industry in terms of any number of 500 industry categories.

Your unique url: <https://ecoprofile.infometrics.co.nz:443/Dunedin%20City/Toolkit/Industry?ids=%5b323,324,325,326,327%5d&i=Hospitality&iid>

Performance of the Hospitality sector, Dunedin City (2018)

Sub-industry	Dunedin City						New Zealand					
	GDP		Employment		Businesses		GDP		Employment		Businesses	
	Level	% of total	Level	% of total	Level	% of total	Level	% of total	Level	% of total	Level	% of total
Cafes and Restaurants	\$81.4m	56.9%	2,159	57.0%	258	54.1%	\$2,336m	55.3%	73,449	55.4%	8,668	49.5%
Takeaway Food Services	\$23.6m	16.5%	620	16.4%	129	27.0%	\$913m	21.6%	28,650	21.6%	6,060	33.8%
Catering Services	\$8.96m	6.3%	237	6.3%	21	4.4%	\$370m	8.8%	11,619	8.8%	876	4.9%
Pubs, Taverns and Bars	\$25.3m	17.6%	673	17.8%	60	12.6%	\$468m	11.1%	14,717	11.1%	1,593	8.9%
Clubs (Hospitality)	\$3.86m	2.7%	101	2.7%	9	1.9%	\$135m	3.2%	4,253	3.2%	507	2.8%
Total	\$143m		3,791		477		\$4,221m		132,689		17,904	

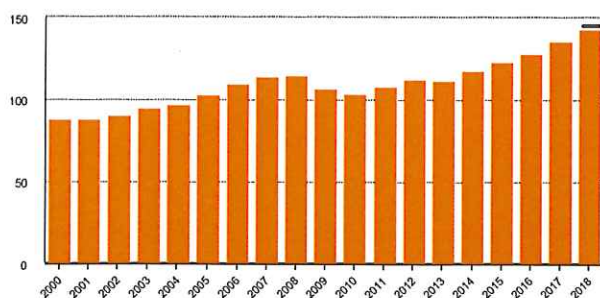
	Dunedin City					New Zealand				
	2017		2018		% of NZ in 2018	2017		2018		% of NZ in 2018
	Level	% of total	Level	% of total		Level	% of total	Level	% of total	
Gross domestic product (GDP)	\$136m		\$143m	5.0%	3.4%	\$3,987m		\$4,221m	5.9%	100%
Employment	3,691		3,791	2.7%	2.9%	127,835		132,689	3.8%	100%
Business units	462		477	3.2%	2.7%	17,412		17,904	2.8%	100%

Gross domestic product (GDP)

GDP in the Hospitality sector was \$143mm in Dunedin City for 2018, compared to \$4,221mm for New Zealand as a whole. Dunedin City accounted for 3.4% of national activity in the Hospitality sector during 2018.

Between 2000 and 2018, growth in Dunedin City's Hospitality sector averaged 2.7% compared to 3.6% in New Zealand. Growth in Dunedin City's Hospitality sector reached a peak of 6.8% in 2005.

Gdp in Dunedin City 2000 - 2018

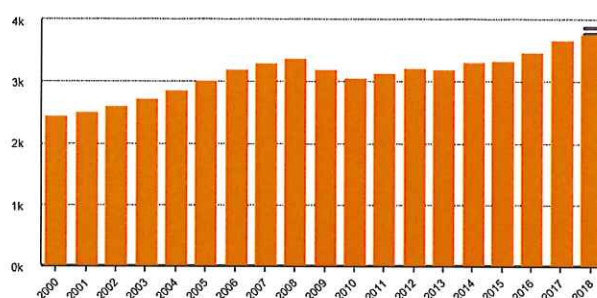


Employment

Employment in the Hospitality sector was 3,791 filled jobs in Dunedin City for 2018, compared to 132,689 for New Zealand as a whole. Dunedin City accounted for 2.9% of national employment in the Hospitality sector during 2018.

Between 2000 and 2018, growth in employment in Dunedin City's Hospitality sector averaged 2.4% compared to 3.2% in New Zealand. Growth in Dunedin City's Hospitality sector reached a peak of 6.3% in 2017.

Filled jobs in Dunedin City 2000 - 2018

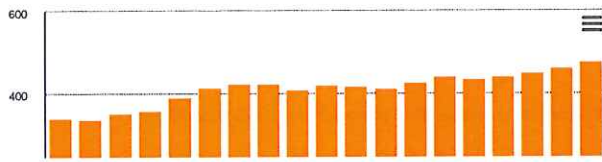


Business units

The number of business units in the Hospitality sector was 477 in Dunedin City for 2018, compared to 17,904 for New Zealand as a whole. Dunedin City accounted for 2.7% of New Zealand's business units in the Hospitality sector during 2018.

Between 2000 and 2018, growth in the number of business units in Dunedin City's Hospitality sector averaged 1.9% compared to 2.8% in New Zealand. Growth in business units in Dunedin City's Hospitality sector reached a peak of 9.2% in 2004.

Business units in Dunedin City 2000 - 2018



Business units by size Dunedin City and New Zealand (2018):

Size	Dunedin City		New Zealand	
	Business unit count	% of total	Business unit count	% of total
0	159	33.3%	159	32.0%
1 to 5	131	27.5%	131	31.5%
6 to 9	61	12.8%	61	14.0%
10 to 19	75	15.7%	75	14.2%
20 to 49	42	8.8%	42	7.4%
50 to 99	0	0.0%	0	0.8%
100 and over	0	0.0%	0	0.1%

© Copyright 2018 Infometrics Ltd