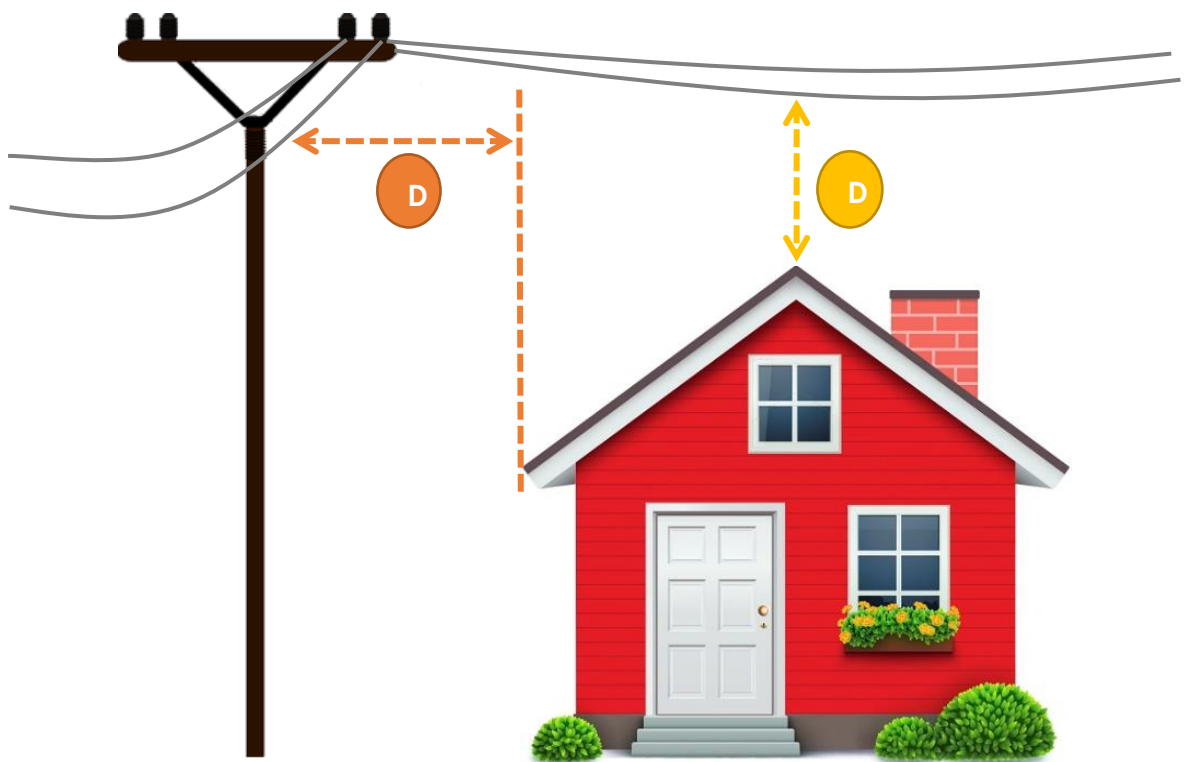


BUILDING NEAR OVERHEAD LINES

The New Zealand Electrical Code of Practice for Electrical Safe Distances (NZECP 34) sets out minimum distances allowed between any new buildings and overhead lines. The Code of Practice seeks to protect persons, property, vehicles and mobile plant from harm or damage from electrical hazards.

The regulations are mandatory and can be found by visiting: <https://worksafe.govt.nz/dmsdocument/1565-new-zealand-electrical-code-of-practice-for-electrical-safe-distances-nzecz-34-2001>

Below is a graphic and a table to assist when building close to lines. The distance between a building and overhead lines varies depending on the voltage and type of line. You must ensure that structures such as garages and extensions to houses and buildings remain well clear of overhead lines. All structures and work activities should be kept at least four metres from power lines.



MINIMUM SAFE DISTANCES FROM BUILDINGS TO OVERHEAD LINES

Voltage	"D" (distance) Minimum distance beneath powerlines	"D" (distance) Minimum distance to side of powerlines
Not exceeding 1kV	4m	3.5m
Exceeding 1kV but not exceeding 11kV	5.5m	5m
Exceeding 11kV but not exceeding 33kV	7m	8.5m
Exceeding 33kV but not exceeding 110kV	7.5m	9.5m
Exceeding 110kV	Refer to table 2 NZECP34	

Please also refer to the below safety guide which you can download to help you and your crews work safely:<https://www.auroraenergy.co.nz/assets/Safety/Safety-Working-Guide-Final.pdf>

If you need to build closer to overhead lines on a private property they may need to be placed underground. A specialist contractor can do this – call us for advice on 0800 22 00 05.