
TAHUNA WASTEWATER TREATMENT PLANT

(ORC Consent 2002.623, Condition 6c)

ROCKY SHORE ECOLOGICAL MONITORING 2014



Report to the Dunedin City Council

Prepared by

Ryder Consulting Limited

February 2014



ryderconsulting
environment + planning + project management

TAHUNA WASTEWATER TREATMENT PLANT

(ORC Consent 2002.623, Condition 6c)

ROCKY SHORE ECOLOGICAL MONITORING 2014

Report to the Dunedin City Council

Prepared by

Brian Stewart PhD

Ryder Consulting Limited

February 2014

Cover Photo: *Rocky shore intertidal zone at Black Head. Photo: Brian Stewart*

Ryder Consulting Limited

P.O.Box 1023

Dunedin

New Zealand

Ph. 03 477 2119

Fax 03 477 3119

Ryder Consulting

EXECUTIVE SUMMARY

- ❖ As a condition of the consent to discharge treated effluent from an outfall off St Kilda Beach the Dunedin City Council has undertaken to monitor rocky shore communities at six sites along the Otago coast.
- ❖ For the 2014 survey invertebrate and algal communities were reasonably diverse at all sites, results that are consistent with previous studies. Abundance of animals and algal cover was variable at both control and impact sites and fell within the range observed during past surveys.
- ❖ As in previous years there appeared to be no readily discernible pattern to either diversity or abundance in relation to direction or distance from the Tahuna outfall.
- ❖ Allan's Beach exhibited the highest community diversity this year. The least diverse site is Boulder Beach followed closely by Victory Beach, which lies furthest away from the Tahuna outfall. Lawyers Head, closest to the outfall, has reasonably good diversity. The loss of taxa and reduced abundance usually seen around wastewater outfalls were not observed at any site.
- ❖ Community composition assessed at each site during the 2014 survey was very similar to compositions found during previous surveys, and although there were some significant changes to diversity and/or abundance at some sites through time, these changes showed no linkage with location (upstream or downstream) or distance from the outfall.
- ❖ There is no evidence of environmental damage that may be attributed to wastewater discharges from the Tahuna outfall. Any effects of wastewater are no more than minor and are insignificant in comparison to the natural variation among sites and from year to year.

Table of Contents

Executive Summary	2
1. Introduction.....	4
1.1 Background	4
1.2 The Otago Coastal Environment.....	4
2. Sample Location	5
2.1 Black Head.....	5
2.2 Second Beach.....	6
2.3 Lawyers Head	6
2.4 Boulder Beach.....	6
2.5 Allan’s Beach.....	6
2.6 Victory Beach	6
3. Methods.....	7
3.1 General	7
3.2 Macroalgae and Macroinvertebrate Monitoring.....	8
3.3 Mussel Monitoring.....	9
3.4 Data Analysis.....	9
4. Results & Discussion.....	11
4.1 General Observations.....	14
4.2 Species Richness and Abundance	14
4.3 Overview of Sampling Sites.....	19
4.4 Mussel Monitoring.....	24
4.5 Community Analyses.....	25
5. Conclusions.....	30
6. References.....	31

1. Introduction

1.1 Background

On 6 October 2004, the DCC was granted a consent to discharge treated wastewater from the Tahuna Wastewater Treatment Plant via an extended outfall off St Kilda Beach. Construction of this new extended outfall off St Kilda Beach has been completed and the outfall began operation on 23 January 2009.

Condition 6(c) of resource consent 2002.623 states: “The consent holder shall undertake biological rocky shore monitoring annually, at Blackhead, Second Beach, Lawyers Head Beach, Boulder Beach, Allan’s Beach and Victory Beach. Monitoring methods shall be consistent with the methods employed under Coastal Permit 97530.”

This report presents the findings of the latest round of rocky shore assessment. Such assessment aims to gauge environmental impacts resulting from the discharge of wastewater off St Kilda Beach from the Tahuna Wastewater Treatment Plant.

1.2 The Otago Coastal Environment

The Otago coast is characterised by the northward flow of the subtropical Southland Current interacting with the inflow of major rivers (Clutha and Taieri), tidal currents and wind along the indented coastline. The Southland Current veers off-coast at Cape Saunders, and flows in the direction of the Chatham Islands. In the vicinity of the Tahuna Wastewater Treatment Plant outfall, the inshore current generally flows northward at around 0.06 m/s. However the speed and direction of the current are affected by weather conditions. At times, during strong nor-east winds and when particular patterns of high and low pressure systems exist across southern New Zealand, the current may turn and flow in a south-westerly direction down the coast.

The Otago coastline receives a variety of wave patterns. Wave patterns include southerly swells, which originate from westerly wind patterns south of New Zealand, and locally generated southerly and northerly storm waves. Tidal patterns are semi-diurnal, with an average range for spring tides of approximately 1.7 metres. Due to the weather, wave and current patterns along the Otago coast, the rocky shore sampling sites are relatively exposed to wave action and current influences from the south.

2. Sample location

The program includes three ‘impact’ sites (Second Beach, Lawyers Head and Boulder Beach) that are located relatively close to the discharge. Although down-current, Victory Beach is some 25 km distant from the nearest outfall and it is probable that effluent does not reach it. In the unlikely event of effluent being conveyed that far, it is expected that the effluent will be extremely dilute. Such distant sites may be considered ‘control’ sites. The remaining site, Allan’s Beach is downstream of the outfall along the predominant current, but is not as distant as Victory Beach. Black Head is generally up-current from the outfall and far enough away to be considered a control. The locations of the sites are shown in Figure 1, with representative photos of each site shown in Figure 2.

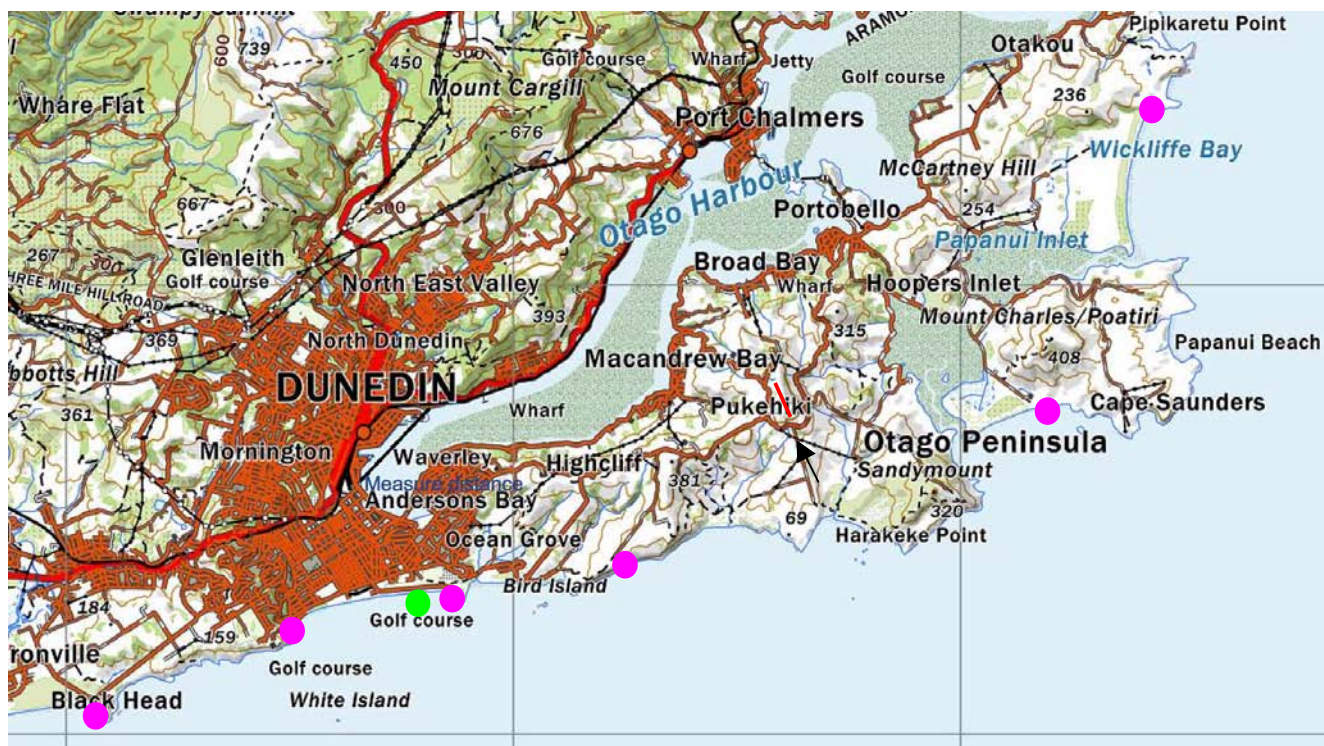


Figure 1. Map showing location of rocky shore monitoring sites (pink dots) in relation to sewage outfall (green dot). Sites are, from left to right, Black Head, Second Beach, Lawyers Head, Boulder Beach, Allan’s Beach, Victory Beach.

2.1 Black Head

The Black Head site is located on the west side of Black Head promontory amongst the boulder reef area at the eastern end of the beach. Broken boulders of columnar basalt dominate this site. These boulders have relatively smooth surfaces and the available niches differ from those found at other sites (i.e. organisms are more likely to be under rocks and boulders than in crevices and guts). Quadrats were positioned

within the boulder reef area close to the seaward edge at the bull kelp fringe. This area is exposed to strong wave action. Black Head has been monitored annually since 1996.

2.2 Second Beach

Second Beach is more similar to Black Head than other sites. It is mostly dominated by moderately sized smooth boulders, but is more sheltered from the southerly swell. The site is on, and adjacent to, a rocky promontory near the western end of the beach, and has been monitored annually since 1996.

2.3 Lawyers Head

The area surveyed is located on a rocky promontory approximately 60-80 metres west of the westernmost of the two disused effluent outfalls. The site is characterised by rough irregular basalt rock and large, smooth ledges, each of which provides the resident species with a variety of niches. Quadrats were placed as close as practicable to the bull kelp along the south-western edge of the reef. Monitoring at Lawyers Head commenced in 1999.

2.4 Boulder Beach

Boulder Beach is a rocky reef habitat 6-7km to the north-east of Lawyers Head. Habitat consists of very large irregular boulders with guts and pools incised into the basement rock. The sampling site is situated at the northern end of the beach, and has been monitored annually since 1996.

2.5 Allan's Beach

Allan's Beach is a rocky reef habitat similar to Boulder Beach and Victory Beach, with large boulders amidst rocky guts. The sampling site is at the northern end of the beach at the seaward base of a tall rocky pinnacle. 2004 was the first year of monitoring at this site.

2.6 Victory Beach

Victory Beach is a rocky reef habitat similar to Boulder Beach, with very large irregular boulders amidst rocky guts. The sampling site is at the northern end of the beach and is home to a thriving New Zealand fur seal (*Arctocephalus forsteri*) colony. The site was first monitored in 2003 (Thompson and Ludgate 2003).

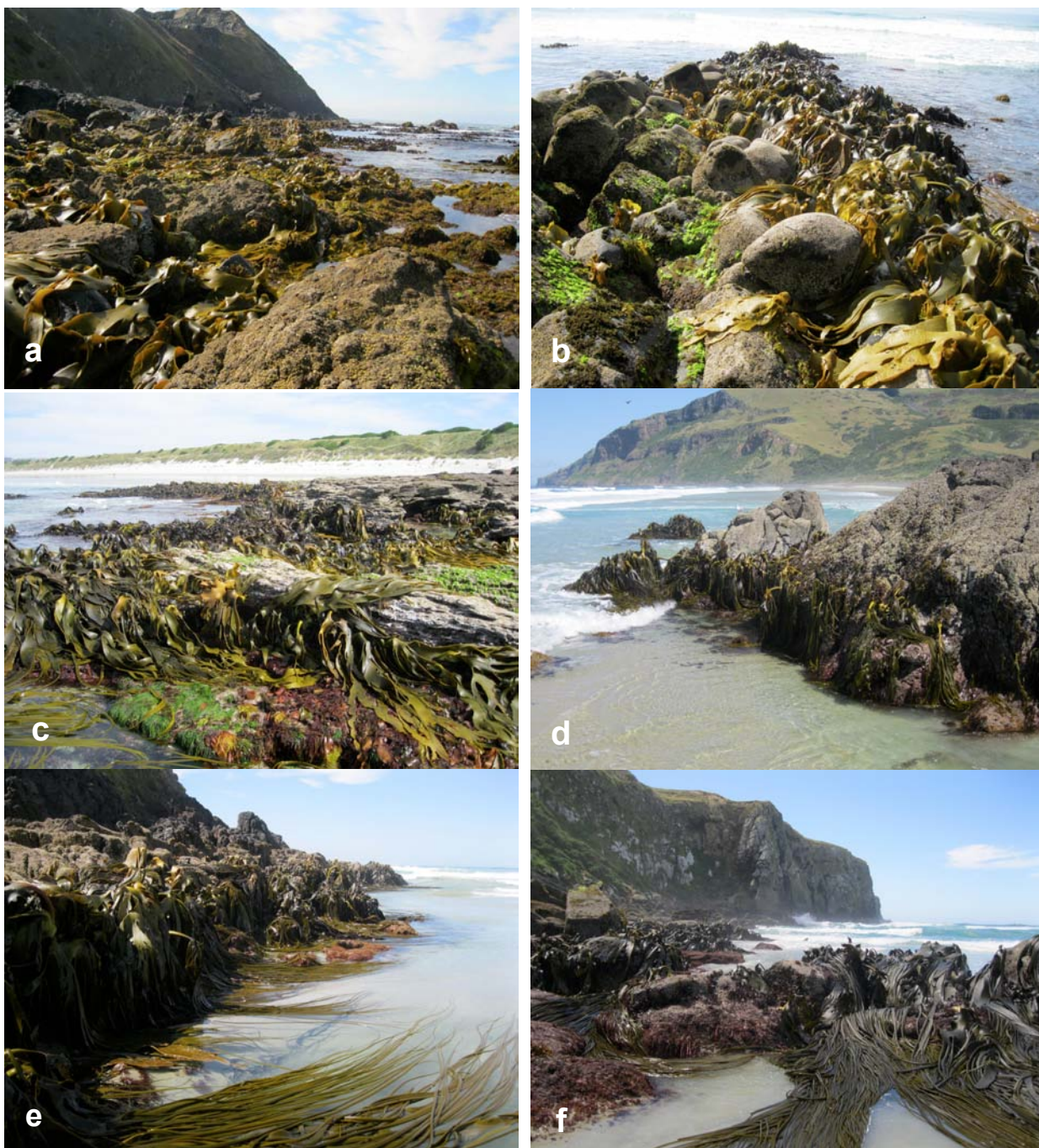


Figure 2. *Intertidal areas sampled in 2014. (a) Black Head, (b) Second Beach, (c) Lawyer's Head, (d) Boulder Beach, (e) Allan's Beach and (f) Victory Beach.*

3. Methods

3.1 General

The sampling protocol used since 1997 is based on other regional monitoring programmes operating in the Bay of Plenty, Southland and Taranaki. The method of sampling investigates species richness and diversity within and between rocky shore sites to establish any impacts of the sewage discharges. Mussel size and frequency

are also examined as a further indicator of environmental impacts.

The use of replicate samples enables the detection of uncommon taxa and, taking account of the natural variability often exhibited by rocky shore communities, allows the determination of significant variations within and among sites.

3.2 Macroalgae and Macroinvertebrate Monitoring

At each site a random block sampling design was used. Macroalgae and macroinvertebrates were identified and recorded from five randomly placed quadrats (0.25m^2) within each of four blocks, giving a total of 20 samples at each site. Each of the four blocks covered approximately 6m^2 and was randomly positioned at low tide as near as practicable to the waters edge, within the macroalgal zone.

Within each quadrat, algal species were recorded as percentage cover. In many cases, blades of the large bull kelp *Durvillaea antarctica* overlaid other algae. The percentage cover of *D. antarctica* was noted and the blades were then pulled aside. Algae occurring beneath this initial layer were then also recorded. Thus, cover of algae could exceed 100%.

The diversity and abundance of all visible animals were then recorded for each quadrat.

Note: There are several species of chiton and limpets that inhabit the Otago coast. Field identification of some species can be difficult due to coralline algal growth on the animal's shell and naturally occurring shell colour variation. Furthermore, it is neither practical nor desirable to remove every animal for closer inspection in the laboratory. Therefore, in some cases, similar species such as *Notoacmea pileopsis* and *Notoacmea daedala* have been grouped together under the genus name, *Notoacmea*. Similarly, some macroalgae (e.g. *Gigartina* species) can be hard to distinguish due to age, reproductive status, or amount of damage caused by wave action and macroinvertebrate grazing. When this occurred, macroalgae species were grouped under the genus name. In 2003 the publication of superior keys and availability of taxonomic training meant that the detail of seaweed taxonomy could be

increased. For that reason some sites have shown an increase in the level of taxonomic detail since 2003.

3.3 Mussel Monitoring

Green lipped mussels (*Perna canaliculus*) are the most likely shellfish to be harvested from the intertidal rocky platforms by recreational fishers. Because of such recreational harvesting for human consumption, size/frequency data for green-lipped mussel are potentially not robust enough to determine possible environmental impacts of the sewage discharges. Previous surveys have shown that both blue (*Mytilus galloprovincialis* [formerly *Mytilus edulis aoteanus*]) and ribbed mussels (*Aulacomya ater maoriana*) are particularly abundant on Otago's rocky coastline. Since 1995, therefore, the size and frequency of all three mussel species have been recorded.

At each sampling location the number of green-lipped, blue and ribbed mussels in each of the 20 quadrats were recorded according to the following size classes:

0-2 cm
2-4 cm
4-8 cm
> 8 cm

3.4 Data Analysis

Taxonomic richness (the number of different species per sampling unit) and taxonomic abundance (the number of individual plants or animals per unit area) have long been the most significant environmental indicators used to assess change in inter-tidal communities.

In contrast to surveys prior to 2001, when data has only been able to be analysed descriptively, or on a species by species basis, the development of new statistical tools (specifically multivariate statistics based on randomisation procedures (Clarke and Gorley 2001)) allows more sophisticated analysis of the more recent data. Multivariate statistical analyses look at the entire inter-tidal community as a group, rather than on a species by species basis. Although these techniques are complex, they have been shown to be the best way of detecting the effects of pollutants on marine communities (Bayne *et al.* 1988). The approach adopted here is to use

summary values, such as number of species and density, in the same way as years prior to 2001, but to also use multivariate techniques to gain an overview of the data. Results were analysed to ascertain whether inter-tidal communities within sites that were closer to the outfall displayed any clear differences from those that were further away. This was analysed for in a number of ways:

1. Locations, and analysing changes through time.
2. Comparing animal abundances at the different sites, and ascertaining whether abundances are changing through time.
3. Analysing community patterns at the different sites and comparing communities in terms of dominant species, variability and community structure.
4. Describing the size/frequency distribution of mussel species and comparing these among sites and through time. Comparing the number of algal and animal species present at the different sites.

Marine communities can be expected to respond in any one of a number of ways when affected by pollutants. The most noticeable effects are:

- (i) Marine habitats in areas that are severely impacted tend to have communities that are different from areas that are not impacted, in terms of the species present, and in terms of which species are dominant (Warwick *et al.* 1990).
- (ii) Communities in areas that are impacted tend to display more variability over time and space than communities in areas that are not impacted (Warwick and Clarke 1993).

In order to ascertain whether those effects are visible for rocky shore communities along the Otago coast on either side of the sewage outfall, several multivariate statistical techniques were used. To show the data visually, ordinations have been calculated and are presented. In such procedures the invertebrate abundance data and algal percentage cover data were first transformed ($\log [x+1]$) to overcome the large numbers of zeros in the data. Bray-Curtis similarity between samples was then calculated. This was used to create a multi-dimensional scaling (MDS) ordination of the data. In these plots, how close the samples, or locations, appear to each other reflects how similar they are in terms of taxonomic composition and patterns of abundance. Stress values indicate how well the diagram represents the data (<0.20 is

considered satisfactory; Clarke and Gorley 2001).

Although the statistics underlying multivariate analysis are complex, interpretation of the results is simple. An ordination is just a picture that shows how similar the communities from each sample are to each other. If sites are very similar, then they are close to each other in the picture.

Similarity between the communities at the different locations was analysed by calculating the percentage similarity in species lists between locations. High percentage similarity between two locations indicates that the same species are dominant at both locations. This procedure also identifies which species are contributing to the differences between locations.

Percentage similarity values show how similar two locations are in terms of the species present and in how abundant the species are.

A further possible measure of pollution impacts is the Index of Multivariate Dispersion (IMD) (Warwick and Clarke 1993). This was used to compare how variable the inter-tidal communities were at different locations. Higher values of the IMD indicate higher variability and potentially higher environmental impacts.

To interpret IMD values, compare the values from year to year or location to location. A higher IMD value indicates more variability in the community.

To analyse changes in numbers of species and animal abundances since 1998, univariate statistics were used. One-factor analysis of variance (ANOVA) (using year as a covariate) was used to see whether numbers of species or animals were different among locations. For the 2008 data in isolation, one-factor ANOVA was used to test for differences among sites. For the abundance analysis Bonferroni post-hoc tests were used to ascertain which sites were different from which other sites.

To interpret ANOVA and Bonferroni test results, look at the 'p' value. If this value is less than 0.05, then the two groups of data are significantly different from one another.

4. Results & Discussion

Sampling in 2014 was carried out over the days of 2nd February and 3rd February. This time period is one week earlier than the time period in which sampling occurred last year and falls within the timeframe over which sampling has occurred in previous surveys. As such the 2014 results are generally comparable to previous years.

4.1 General observations

The period preceding and during sampling was typified by moderate to low swells, with generally light winds. Tides during the sampling period were very low, so access down the intertidal zone was similar to 2013 and 2012 and less limited than in 2011 when tides were just moderate. The sand build up that had buried some of the lower intertidal zone last year was not evident this year. All of the sites were typified by clean rock surfaces (Figure 2) and there was no visible evidence of sewage on any of the shores.

4.2 Species Richness and Abundance

4.2.1 Taxonomic Richness

Taxonomic richness (number of distinct taxa) reflects the health of the intertidal community through a measurement of the variety of taxa present (both flora and fauna). Taxonomic richness generally increases with better water quality, greater habitat diversity and greater habitat stability.

Taxonomic richness at all sites was generally similar to previous surveys, with the total number of algal and animal taxa showing only a minor increase over the results for most sites for previous surveys (Table 1, Figure 3). The exceptions are Black Head where numbers of both algal and animal taxa have fallen slightly this year, and Victory Beach where numbers have increased somewhat. At all other sites algal and animal diversity varied only slightly or not at all from that seen in previous surveys (Table 1, Figure 3).

The overall diversity (mean number of both algal and animal taxa per square metre) remains within the range of variability for all sites other than Allan's Beach and Victory Beach where there has been a slight increase this year (Table 1). Algal taxa have ranged from 8 to 33 across the various sites through time while animal taxa have ranged from 10 to 44. This suggests that variability in floral and faunal diversity is not uncommon.

Despite the relatively close proximity of Black Head, Lawyers Head and Boulder Beach to the Tahuna outfall (Figure 1), overall diversity (animals and algal species combined) at these sites is not obviously different to other sites. However, this year the total number of taxa encountered at Second Beach (68) is higher than seen in the

past. Other sites have total taxa ranging from 47 to 65 with their diversities falling within the range (17 to 68 taxa) seen at other sites over past years (Table 1).

Table 1. Taxonomic richness and animal abundance at monitoring sites 1996-2014.

	Total no. of taxa per site	Algal taxa per site	Animal taxa per site	Mean taxa per quadrat	Mean animal abundance (m2)
Black Head					
1996	23	9	14	14	
1997	29	12	17	16	
1998	43	16	27	12	2840
1999	48	16	32	13	7812
2000	53	23	30	12	7247
2001	38	17	21	10	27649
2002	40	17	23	20	27513
2003	57	29	28	14	5368
2004	48	21	27	20	8796
2005	59	22	37	18	1066
2006	51	22	29	13	853
2007	46	16	30	13	19208
2008	55	27	28	16	221
2009	55	25	30	15	11197
2010	58	34	24	16	3061
2011	56	25	31	19	4128
2012	51	25	26	17	7954
2013	77	33	44	17	7342
2014	60	29	31	17	5982
Second Beach					
1996	32	16	16	11	
1997	30	15	15	13	
1998	44	21	23	15	11890
1999	43	17	26	12	15936
2000	47	20	27	15	6870
2001	43	18	25	14	19964
2002	49	21	28	17	20262
2003	45	18	27	10	33808
2004	40	16	24	15	26652
2005	55	17	38	18	6110
2006	55	22	33	19	6683
2007	50	17	33	14	10779
2008	47	18	29	17	8504
2009	55	22	33	20	8850
2010	46	25	21	15	14606
2011	51	22	29	19	15031
2012	54	27	27	21	6092
2013	66	29	37	18	13980
2014	68	31	37	12	12433
Lawyers Head					
1999	35	11	24	13	19505
2000	47	23	24	14	4442
2001	39	18	21	16	26707
2002	45	18	27	18	16741
2003	49	24	25	16	28216
2004	50	19	31	16	25354
2005	42	14	28	19	7039
2006	50	20	30	17	11192
2007	42	14	28	19	5905
2008	39	16	23	13	14868
2009	44	19	25	18	3085
2010	44	25	19	13	4650
2011	38	13	25	17	3216
2012	48	19	29	18	2688
2013	42	19	23	18	3914
2014	49	21	28	15	4493

Table 1. continued....

	Total no. of taxa per site	Algal taxa per site	Animal taxa per site	Mean taxa per quadrat	Mean animal abundance (m2)
Boulder Beach					
1996	17	7	10	7	
1997	24	9	15	12	
1998	32	7	25	15	13106
1999	37	13	24	13	11581
2000	37	16	21	12	19198
2001	46	18	28	13	16863
2002	36	12	24	23	34706
2003	40	17	23	12	25717
2004	42	13	29	16	9351
2005	40	10	30	19	1469
2006	43	13	30	19	19254
2007	41	16	25	14	9377
2008	46	18	28	13	2309
2009	49	18	31	18	4260
2010	33	17	16	13	3330
2011	48	17	31	21	2747
2012	45	20	25	14	3633
2013	30	10	20	14	7644
2014	47	18	29	16	4417
Allan's Beach					
2004	40	13	27	17	7527
2005	31	11	20	14	4050
2006	49	13	36	16	10080
2007	42	17	25	13	4145
2008	54	20	34	16	4383
2009	60	23	37	20	4919
2010	55	28	27	16	4446
2011	53	19	34	19	4159
2012	51	19	32	19	6148
2013	52	18	34	16	4319
2014	65	28	37	18	3298
Victory Beach					
2003	40	15	25	14	28093
2004	37	13	24	17	10393
2005	28	8	20	16	4316
2006	42	15	27	15	5390
2007	40	17	23	11	3085
2008	47	21	26	13	2214
2009	47	20	27	17	3067
2010	47	24	23	18	2436
2011	47	23	24	19	2007
2012	45	23	22	17	4099
2013	34	14	20	17	2476
2014	57	27	30	16	2817

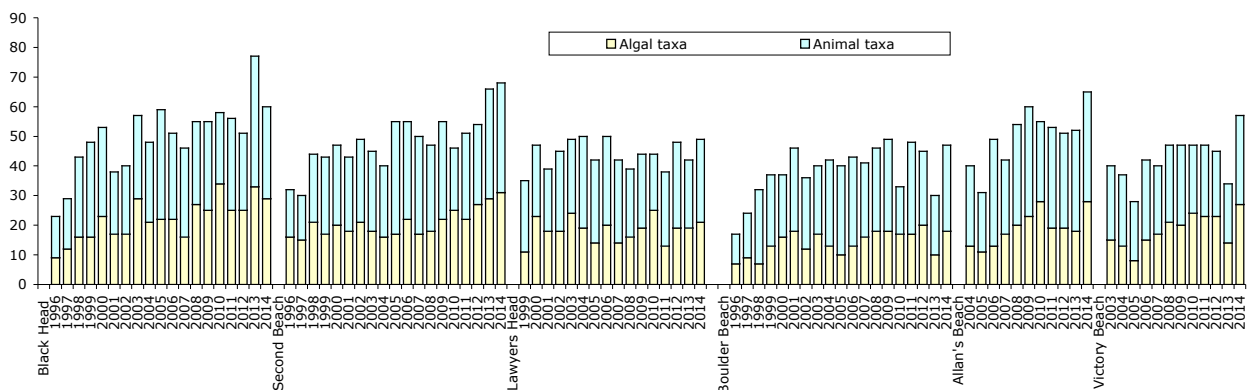


Figure 3. Taxonomic richness for Dunedin City Council rocky shore monitoring sites 1996-2014.

The analysis of variance results for 1996-2014 (Table 2) shows that there are significant differences in taxonomic richness and abundance for animals at the various sites since surveys began. If however, we consider results since 2004, when actual numbers were counted rather than percentage cover for some species, significant differences become less clear (Table 2). Algal richness has changed significantly through time (shown by significant p value for ‘All Years’ in Table 2) and differs from site to site (Table 2). These results need to be viewed cautiously as some of these differences are likely due to different intertidal levels being available at different surveys due to varying tide heights.

Table 2. *Analysis of variance (ANOVA) results for algae and animal taxonomic richness and animal abundance for Dunedin City Council rocky shore monitoring sites over differing timeframes. ‘p’ values <0.05 indicate a statistically significant result.*

Factor		Algae	Animals	Abundance
All Years 1998-2014	$F_{16,73}$ p	3.25 0.003	1.82 0.044	7.17 <0.001
Sites through time	$F_{5,90}$ p	5.031 <0.001	2.99 0.015	1.91 0.106
Post 2004 data				
Years since 2004	$F_{10,55}$ p	3.95 <0.001	1.77 0.088	2.14 0.037
Post 2007 data				
Years since 2007	$F_{6,35}$ p	2.49 0.032	2.27 0.048	0.455 0.861

The fluctuations in algal taxonomic richness at the study sites over time can be readily seen in Figure 3. It should be recalled, however, that the availability of new and improved taxonomic keys is likely the most significant reason for the higher taxonomic diversity at all sites after 1997. Since 2004 overall diversity has continued to fluctuate, but not significantly for animal diversity (Table 2).

There are no apparent differences in diversity closer to, or further away from, the outfall ($F_{1,94} = 2.12$; $p = 0.149$). It is suggested, therefore, that the variability seen through time is most likely the result of natural variation within the communities, and the high degree of variability of substrata within sites, rather than as a result of effluent discharged from the outfall. Abundance of animals does not show a significant change with time since 2007 when assessment of abundance was changed to a more rigorous method (Table 2).

Table 3 (a) Average number of species found per quadrat and (b) total number of species found per site for the eight beaches in 2003 to 2014. Green columns are algae, plain columns are animals.

a	2003		2004		2005		2006		2007		2008		2009		2010		2011		2012		2013		2014	
	Algae	Animals	Algae	Animals	Algae	Animals	Algae	Animals	Algae	Animals	Algae	Animals	Algae	Animals	Algae	Animals	Algae	Animals	Algae	Animals	Algae	Animals	Algae	Animals
Black Head	4.6	7.9	8.4	11.4	7.1	10.9	7.7	5.8	5.85	7.95	9.5	8.75	7.1	8.4	5.8	7.2	8.2	11.4	8.0	9.2	8.0	9.1	8.8	8.0
Second Beach	4.9	7.6	5.6	9.5	5.6	12.4	7.2	11.8	6.2	12.9	5.5	9.05	8	12.2	6.5	6.1	7.5	13.1	7.4	13.1	7.0	10.9	7.5	9.9
Lawyer's Head	6.7	6.2	5.6	10.6	5.8	12.9	4.9	11.9	5.8	7.8	4.25	10.45	7.1	11.1	7.5	7.2	5.5	13.7	6.0	12.4	6.0	12.3	5.7	9.4
Boulder Beach	8.3	5.6	4.6	11.7	4.4	14.4	5.2	14.1	4.5	8.85	4.5	6.15	5.4	13.1	9.9	5.9	6.8	14.1	4.8	9.3	4.1	10.2	5.2	10.9
Allan's Beach			4.4	12.3	4.7	9.6	3.7	12.0	5.15	5.8	5.45	8.7	7.1	13	7.4	5.0	6.1	14.9	5.9	15.1	4.6	11.1	7.0	11.4
Victory Beach	4.9	9.1	5.8	11.3	3.9	11.9	5.0	10.2	6.7	8.55	5.85	11.55	7	9.8	7.0	7.7	7.5	11.3	7.6	12	7.1	12.5	7.3	9.0
Total no. species/quadrat																								
b	2003		2004		2005		2006		2007		2008		2009		2010		2011		2012		2013		2014	
	Algae	Animals	Algae	Animals	Algae	Animals	Algae	Animals	Algae	Animals	Algae	Animals	Algae	Animals	Algae	Animals	Algae	Animals	Algae	Animals	Algae	Animals	Algae	Animals
Black Head	29	28	21	27	22	37	22	29	16	30	27	28	25	30	34	24	25	31	25	26	33	44	29	31
Second Beach	18	27	16	24	17	38	22	33	17	33	18	29	22	33	25	21	22	29	27	27	29	37	31	37
Lawyer's Head	24	25	19	31	14	28	20	30	14	28	16	23	19	25	25	19	13	25	19	29	19	23	21	28
Boulder Beach	17	23	13	29	10	30	13	30	16	25	18	28	18	31	17	16	17	31	20	25	10	20	18	29
Allan's Beach			13	27	11	20	13	36	17	25	20	34	23	37	28	27	19	34	19	32	18	34	28	37
Victory Beach	15	25	13	26	8	20	15	27	17	23	21	26	20	27	24	23	23	24	23	22	14	20	27	30

Neither the overall numbers of algal taxa nor the overall number of animal taxa at each site has changed significantly from 2013 to 2014 ($F_{1,10} = 1.55$, $p = 0.24$ and $F_{1,10} = 0.277$, $p = 0.61$ respectively) (Table 3). Through time the only real change in algal diversity has been the relatively low diversity encountered at three sites (Boulder Beach, Allan's Beach and Victory Beach) in 2005. Such low diversity has not been encountered since.

There was no clear pattern for the number of algal taxa per quadrat in 2014. Control site and impact sites all had similar numbers of algal taxa this year and similar to previous years, Boulder Beach once again showed the lowest diversity and Black Head the highest (Tables 1 and 3). Algal diversity at Lawyers Head is very slightly lower than it was last year and falls a little below midway with respect to diversity. Likewise, both animal diversity per quadrat, and total animal diversity showed no definite pattern that could be related to the location of the outfall (Tables 1 and 3). Any differences in animal diversity and/or abundance have consistently been variable through time and do not show any discernible trends. It is most likely that the small differences that do exist among sites (Tables 1 and 3) are due to differences in micro-habitat and tide height at the time of each survey.

4.2.2 Dominant Taxa

(i) Seaweeds (macro-algae)

Surveys since 2003 have used revised and updated algal keys (e.g. Seaweeds of New Zealand – an illustrated guide, by Nancy Adams, 1994), which have allowed a greater

degree of taxonomic detail and accuracy. Therefore, the major taxa present at the study sites differ slightly from those found in surveys prior to 2003.

As in previous surveys *Durvillaea antarctica* (bull kelp) and coralline algae (encrusting pink and white algae such as *Lithothamnion* spp. and articulated corallines such as *Corallina officianalis*), covered significant areas at most sites (Appendix 1). The red algae *Pachymenia lusoria* was also common at most of the sites (Appendix 1). *Ulva lactuca*, a green alga, was present at all sites, albeit sparsely at Boulder Beach. *Ulva* was present at similar abundances to last year, but was slightly less abundant than in 2011 and 2012. It was certainly not as abundant as in 2005 when the summer was particularly warm. *Codium fragile* and *Xiphophora gladiata* were slightly more common at Black Head than last year, with both also being abundant outside the survey area. A diverse range of algal species was found, with many being ubiquitous (Appendix 1). *Enteromorpha* sp., which was found at a single site (Allan's Beach) in 2011 and at four sites last year was observed at all sites this year.

(ii) Animals (Figure 4)

Once again barnacles and mussels were the visually dominant animal taxa at most sites with the small honeycomb barnacle, *Chamaesipho columna*, and the brown barnacle *Chamaesipho brunnea*, being the most numerically dominant species. Limpets were also very common and diverse at the majority of sites. As in previous surveys, small gastropods (*Austrolittorina* spp.) were present in moderate numbers at all sites (Appendix 1) but were not as abundant at Second Beach and Lawyers Head as elsewhere. Chitons, especially *Sypharochiton pelliserpentis*, were present at all sites with moderate to high abundances at Lawyers Head, Boulder Beach and Allan's Beach. Anemones were also present at all sites, with particularly high diversity and abundance at Allan's Beach.

As for last year, ascidians were uncommon and bryozoans were once again not encountered at all. Bryozoans were, however, observed outside quadrats at Second Beach and Allan's Beach. Highly mobile taxa, such as fish, shrimps and crabs, were seen at some sites but were under-sampled because they were often observed but tended to seek refuge at our approach and were not encountered in any of the quadrats.

Overall, a very diverse range of animal taxa was found at all sites (Appendix 1), with other taxa, such as sea stars and sponges, often seen throughout the sites but seldom falling within quadrats.

4.2.3 Animal Abundance

This years data show that there is a significant difference in the number of animal species per m² from 2007 to 2014 (Table 2). This differs from last year when no significant difference was found. There is also a significant difference in the overall abundance of animals from site to site, the same result as last year. If, however, the abundance of animals at sites is compared through time since surveys began, there has been no significant change (Table 2). It is interesting that Victory Beach, the control site, continues to consistently show low abundance, likely a reflection of the substrate and exposure at this site. Second Beach continues to show high abundance (Figure 4) due to the high densities of the barnacles *Chamaesipho columna* and *Epopella plicata* at this site. By and large, numbers are very changeable from year to year with no obvious patterns discernible. This is likely attributable to the random placement of quadrats on the highly variable substrate at the various sites. In general, however, animal numbers in 2014 show no distinct correlation with proximity to the outfall (Table 1).

Through time the difference in numbers from year to year is quite obvious on the graph in Figure 4. The most likely explanation for the high variability at any site is that more quadrats fell within barnacle zones in years that show very high abundance. As stated in the methods, the sampling sites are chosen entirely at random with quadrats being placed randomly as close as practicable to the waters edge in the macroalgal zone. Zones where barnacles are abundant will have a marked influence on numbers, as explained below.

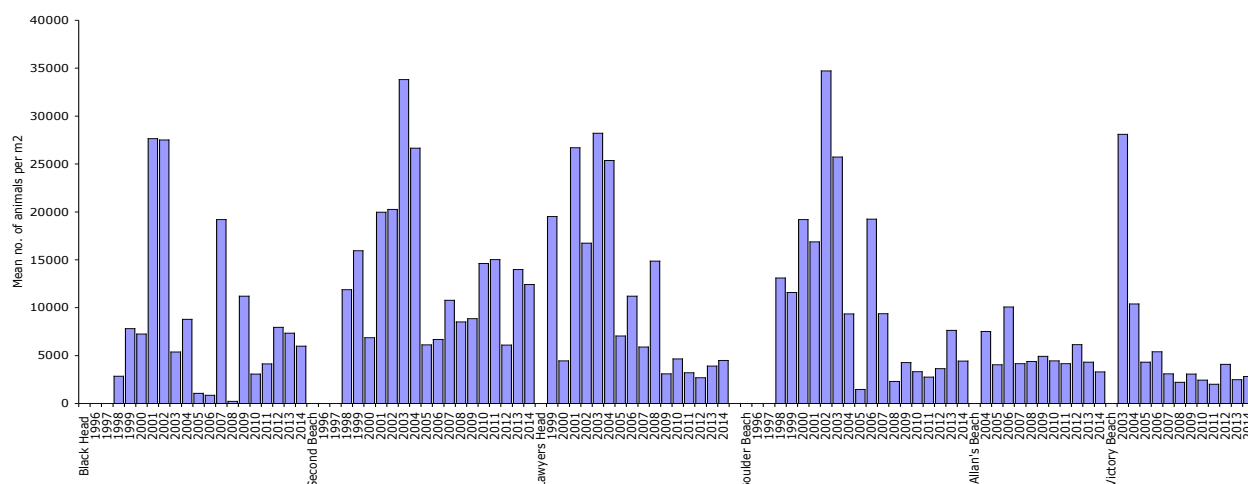


Figure 4. Average animal abundance for each sampling location, 1996-2014.

Looking for long-term patterns in animal abundance, the only sites for which any discernible trend are perhaps Lawyers Head and Victory Beach, both of which show a possible general decline in animal numbers over the years, and Boulder Beach which shows a slight increase in abundance over recent years. Such trends, however, are by no means conclusive and there is no obvious reason there should be a decline or increase at these sites. Abundances at Black Head, Second Beach, Boulder Beach and Allan's Beach this year are very slightly lower than encountered last year, but those at Lawyers Head and Victory Beach are very slightly higher. The very high numbers and patchy distribution of some of the small animals confound the results somewhat. *Chamaesipho columna*, the small honeycomb barnacle, was present at every site, and, although percentage cover was quite low in many cases, when ground-truthed it was found that there was a mean of 214 individuals in each 1% of the 0.25m² quadrat (i.e. 8.56 per cm²). Consequently, where the quadrat falls (in a barnacle encrusted area or not) can have an enormous bearing on the total abundance of animals at a site. Such is the nature of random sampling.

Analysis of the 2014 data using a Bonferroni post-hoc statistical test and ANOVA confirmed that, as in previous years, Second Beach has the highest abundance (Table 4) ($F_{5,114} = 4.89$, $p = <0.001$). As already stated, this is largely due to the presence of high numbers of the small barnacle *Chamaesipho columna*.

Table 4 Bonferroni post-hoc test results for animal abundance, 2014 data. Significant differences among sites are shown, with the site having the higher abundance listed first.

	Black H	Second	Lawyers	Boulder	Allan's	Victory
Black H.						
Second B.	SB>BH					
Lawyers H		SB>LH				
Boulder B.		SB>BB				
Allan's B.		SB>AB				
Victory B.		SB>VB				

4.3 Overview of Sampling Sites

4.3.3 Black Head

Black Head had a less diverse algal community than last year, but it was more diverse than that observed in 2011 and 2012 (Table 1). Algae were once again dominated by articulated coralline algae, with patches of *Durvillaea antarctica* and *Ulva lactuca* also common. *Gigartina decipiens*, *G. clavifera*, *Stictosiphonia arbuscula* and *Pachymenia lusoria* were also reasonably common, as they were last year. The green algae *Codium fragile* and the brown alga *Xiphophora gladiata* were more common than last year, but still at slightly lower abundances than in previous surveys. Twenty nine algal species were present – one less than last year. However, overall algal abundance has varied little throughout the past 12 surveys (Tables 1 and 5).

Numbers of green-lipped, blue and ribbed mussels have always been low at the surveyed site at Black Head (Figure 5). This is a function of the topography at the site and the fact that mussels here are generally in deeper water than can be easily surveyed. However, numbers of green lipped and blue mussels are similar to previous surveys, with numbers of ribbed mussels slightly lower than last year.

The remainder of the animal community was somewhat less diverse this year, but with *Chamaesipho columna* remaining the visually and numerically dominant species, followed by other barnacles (*Chamaesipho brunnea*, *Elminius modestus* and *Epopella plicata*). Limpets, with the exception of *Notoacmea* spp., and the small gastropod *Margarella* spp. were less common than last year. *Austrolittorina*, which was almost completely absent in 2009 and 2010, was present in patches of moderately high abundance on some rocks this year (Appendix 1). Anemones, particularly

Actinothoe albocincta, were observed in small, scattered clumps in pools and under rocks.

Table 5. Total percentage of algal cover at each site from 2003 to 2014.

	Black	Second	Lawyers	Boulder	Allan's	Victory
Algal cover/site 2003	3769	3064	3639	2676	-	2589
Algal cover/site 2004	1880	691	1421	919	1294	1432
Algal cover/site 2005	827	814	1346	1112	609	749
Algal cover/site 2006	1728	1667	1369	1379	1043	1771
Algal cover/site 2007	857	917	1390	1071	1095	945
Algal cover/site 2008	1112	819	999	1125	1200	795
Algal cover/site 2009	806	925	1055	1080	1443	966
Algal cover/site 2010	1569	959	1334	1716	1509	1229
Algal cover/site 2011	1140	952	1538	962	1395	916
Algal cover/site 2012	1015	1154	1473	1370	1326	1529
Algal cover/site 2013	1181	1081	1327	787	637	1267
Algal cover/site 2014	1123	1070	1222	1291	1405	1024

4.3.4 Second Beach

Algal communities at Second Beach showed more diversity than usual with 31 taxa observed (Table 1). The algal community was dominated by *Durvillaea antarctica* but, as for previous surveys, distribution within the surveyed site was very patchy apart from in Block 1. As in past years, coralline algae, *Stictosiphonia arbuscula*, *Pachymenia lusoria*, *Ralfsia verrucosa* and *Ulva lactuca* were moderately common, but also rather patchily distributed (Appendix 1).

Barnacles, especially *Chamaesipho columna*, dominated the rocky shore animal community at Second Beach, with numbers exceeding a thousand per square metre in more than half the quadrats surveyed (Appendix 1). Gastropod snails such as *Austrolottorina cincta* were also abundant and more widely distributed than last year. The small black mussel, *Xenostrobus pulex*, was extremely common in patches but slightly less widely distributed than last year. Mussel numbers at Second Beach have traditionally been quite high and this year is no exception. Although slightly less abundant than last year, numbers of large species (*Mytilus* and *Perna*) fall within the range of variability observed during previous surveys (Figure 5). *Aulacomya*, however, is less common than usual.

4.3.5 Lawyers Head

The algal community at Lawyers Head was slightly more diverse this year than last year, but typical of previous surveys, apart from 2011 when diversity was particularly low (Table 1). The community was heavily dominated by the brown alga, *Durvillaea antarctica*. This site used to be notable as being the only one where *Durvillaea willana* was found in any abundance. This year, however, *D. willana* occurred only sparsely and was not observed in any quadrats. Coralline algae and *Lithothamnion* were very common, with a number of other red algal species, especially *Pachymenia lusoria* and coralline paint, also present (Appendix 1). Green algal species were again not common this year with just three taxa observed, although *Ulva lactuca* was present in most quadrats.

Numbers of *Perna canaliculus* were much lower than last year and lower than they have been since 2004 (Figure 5). Large animals (>8cm), however, were still common in areas outside quadrats, especially in crevices and lower in the intertidal zone. Numbers of *Aulacomya ater maoriana* and *Mytilus galloprovincialis* were slightly lower than last year, but much the same as in most surveys since 2008 (Figure 5). Barnacles (mainly *Chamaesipho columna*) and the small snail, *Austrolittorina cincta*, were once again all very common at this site with patches of the small mussels, *Xenostrobus pulex* also widespread. Chitons (*Sypharochiton pelliserpentis*) and limpets (*Cellana* spp, *Patelloidea corticata*, *Notoacmea* spp. and *Siphonaria* spp.) were all quite widespread and moderately abundant, with numbers similar to previous surveys.

4.3.6 Boulder Beach

Algal diversity was much higher than last year and fell within the variability observed over the past ten years. The low diversity last year was likely due to a build up of sand (>50cm deep) at the survey site, meaning many organisms were buried. Considerable movement of sand associated with storm events is not unusual along the peninsula coastline. As with most other sites, the algal community at Boulder Beach was dominated by *Durvillaea antarctica*, *Corallina officinalis* and coralline paint, with *Pachymenia lusoria* also common throughout the site (Appendix 1).

Perna canaliculus showed abundance higher than last year, with numbers being about average for what has been observed over past surveys (Figure 5). Other large mussel species (*Aulacomya* and *Mytilus galloprovincialis*) also showed abundances that fell

within normal variability. This beach remains closed to visitors to give yellow-eye penguin numbers a chance to recover and is not expected to be targeted by recreational shellfish gatherers. The higher abundance of large *Perna* is likely to be a function of a greater expanse of the intertidal zone being available for surveying at the site this year.

Animal communities were dominated by a variety of barnacles (*Chamaesipho columna*, *C. brunnea*, *Elminius modestus* and *Epopella plicata*), with the small mussels *Xenostrobus pulex* and *Modiolus neozelanicus* also being very common in most quadrats. The small snail *Austrolittorina cincta*, was once again common in most quadrats also. Limpets (*Cellana* spp., *Notoacmea* spp., *Patelloidea* spp.) and chitons were widespread, but not as abundant as in 2010, 2011 and 2012 (Appendix 1).

4.3.7 Allan's Beach

Algal diversity at Allan's Beach was considerably higher this year than it was last year, but similar to the period from 2008 - 2010. Bull kelp (*Durvillaea antarctica*) was moderately abundant and was observed in a little over half of the surveyed quadrats this year. Coralline algae and *Lithothamnion* were very common, with the green alga, *Ulva lactuca* slightly less so. As in previous years other algae, although reasonably diverse, were quite sparse. The green alga *Codium fragile*, which appeared to be absent from quadrats in 2011, was once again observed in all quadrats in Block 4, as it was last year.

Densities of the mussels *Mytilus galloprovincialis* and *Aulacomya* were lower this year than last year, but fell within the variability seen in past surveys. Densities of *Perna canaliculus*, however, are lower than at any time in the past. Whether or not this is due to recreational collection is a moot point, but the likelihood of this decrease being due to effluent discharge from the Tahuna WWTP seems remote. It should be noted that quarterly collection of mussels is also a consent condition of the Tahuna WWTP discharge permit, but every effort is made to collect from sites well away from rocky shore survey sites.

As in previous years, the animal community was heavily dominated by barnacles, especially *Chamaesipho columna*, with *C. brunnea*, *Elminius modestus* and *Epopella plicata* also being present in quite high densities. The small gastropod, *Austrolittorina*

cincta, and the bedding mussel *Xenostrobus* were quite abundant again this year, albeit patchily distributed. Chitons, limpets, and amphipods were only moderately common and also patchily distributed. Anemones, especially *Actinothoe albocincta*, *Oulactis mucosa* and *Epiactus thompsoni*, were abundant as patches in well wetted areas.

4.3.8 Victory Beach

The algal community was similar to that at other sites, being visually dominated by *Durvillaea antarctica*, coralline algae and *Pachymenia lusoria*. However, as for last year, the encrusting brown alga, *Ralfsia verrucosa*, was more common here than at most other sites. Algal diversity is much higher than last year, but similar to the five surveys prior to 2013. Cover is much the same as in most previous surveys, although *Durvillaea antarctica* appeared in just nine out of twenty quadrats (Appendix 1). *Stictosiphonia arbuscula*, which was absent from surveyed areas in 2011, was once again present, although in relatively low abundance on the tops of some rocks. It should be noted that *Stictosiphonia* is quite common at higher tide levels.

Perna canaliculus numbers were higher this year than either last year or 2012. *Mytilis* and *Aulacomya* densities, however, were both very similar to those encountered last year. Numbers of large *Perna canaliculus* (>8cm) were higher this year, a reflection of the increased accessibility at the site for this survey due to the very low tide this year (Figure 5). Animal communities were similar to those at Boulder Beach and were dominated by barnacles (*Chamaesipho columna*, *C. brunnea* and *Epopella plicata*), *Austrolittorina*, bedding mussels and limpets (*Cellana* spp., *Notoacmea* spp., *Patelloidea* spp.). Overall animal diversity at Victory Beach in 2014 was higher than it has ever been (Table 1). Once again, this is likely a reflection of the very low tide allowing greater accessibility this year.

4.4 Mussel Monitoring

Size frequency distributions of green lipped (*Perna canaliculus*), blue (*Mytilus galloprovincialis*) and ribbed (*Aulacomya ater maoriana*) mussels at all eight monitoring sites since 2004 are presented in Figure 5 (see Appendix 2 for raw data).

Densities of *Perna canaliculus* showed increases at Boulder Beach and Victory Beach, and slight decreases at the remaining sites (Figure 5). However, densities observed this year remain within the variability seen over the past few surveys from most sites. As already stated, the high density of mussels at Boulder Beach and

Victory Beach is likely a reflection of the very low tide allowing greater accessibility to the mussel beds this year.

The density of *Aulacomya ater maoriana* has been traditionally quite low at all surveyed beaches, this mussel being markedly less common than *Perna* or *Mytilus*. Overall, however, numbers at Boulder Beach were slightly higher than last year, those at Lawyers Head, Allan's Beach, and Victory Beach much the same as last year, and slight decreases at Black Head and Second Beach. There are no obvious patterns of *Aulacomya* distribution that can be related to the location of the Tahuna WWTP outfall.

Mytilus galloprovincialis abundance is generally similar to that found in previous surveys, although numbers at Second Beach, Boulder Beach and Allan's Beach are a little lower than they were last year.

In summery there is no clear relationship among mussel numbers, size or species composition and the location of the outfall. Numbers of all mussel species continue to be lower at Black Head over all the years surveyed. It is believed that mussel numbers (of all larger species) are generally low at Black Head due to a lack of suitable habitat in the survey area and the very exposed nature of the shore here. There are certainly beds of *Perna* and *Mytilus* present, but, as already stated, generally in deeper water on rock pinnacles located some metres out from the shoreline making sampling both difficult and dangerous.

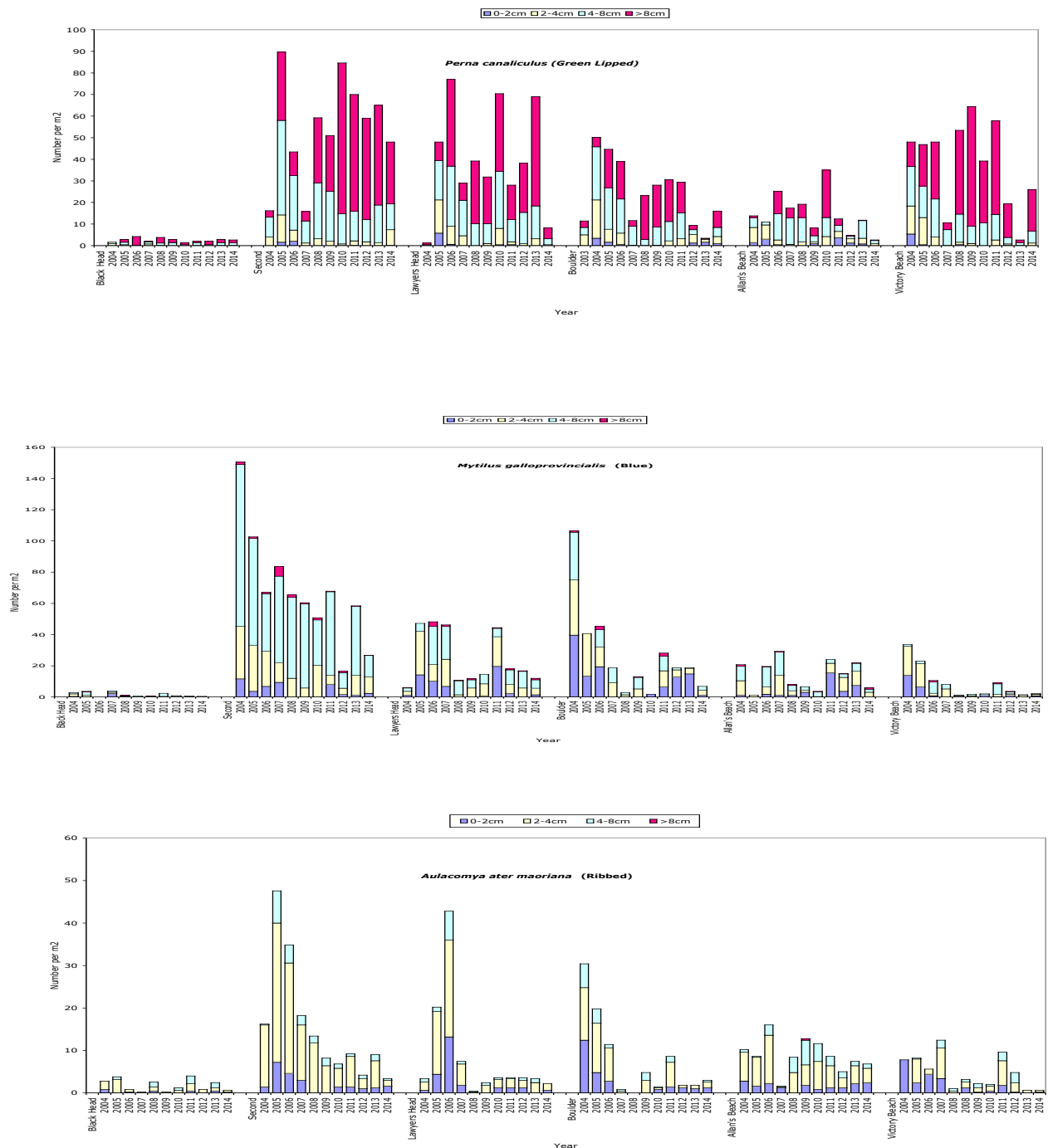


Figure 5. Size frequency distribution data for mussels sampled during rocky shore monitoring 2004-2014.

4.5 Community analyses

As has been found in all previous surveys, the inter-tidal rocky shore communities were variable at most of the locations sampled (indicated by a spread of points in the ordination at particular sites) (Figure 6). All of the sites showed varying degrees of similarity within each site, as seen from the grouping of symbols in Figure 6, with

Boulder Beach and Black Head, arguably, showing the most intra-site similarity. Results for the ordination was very similar to those seen in all surveys since 2008.

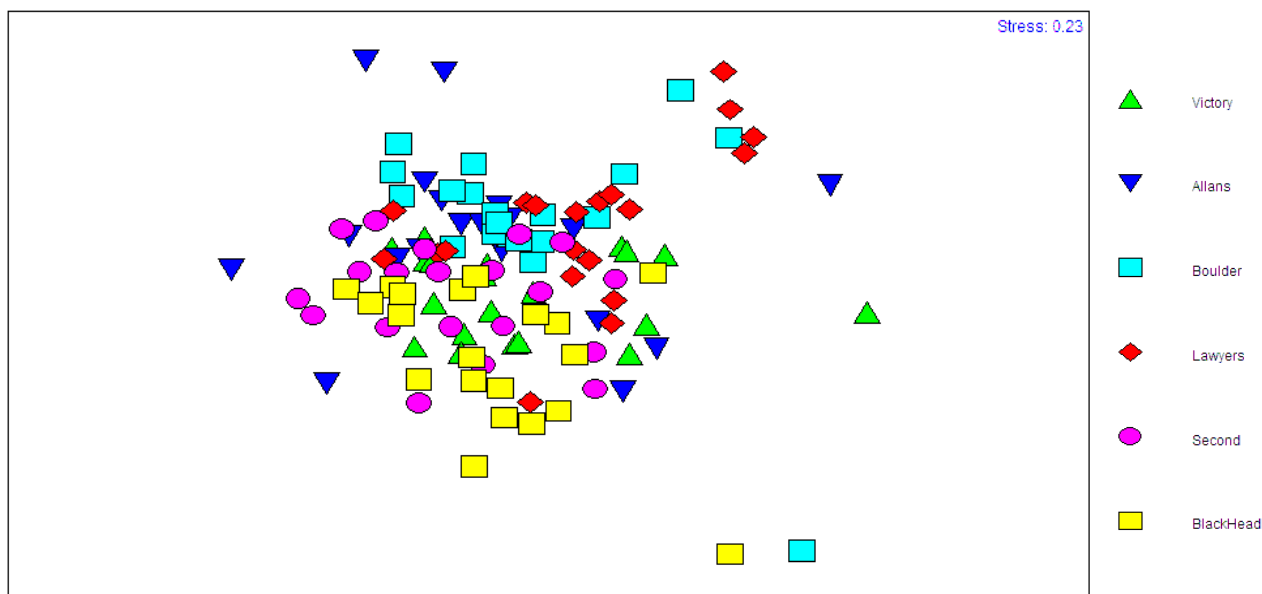


Figure 6. Ordination of inter-tidal communities by sampling location for 2014 data.

There was no clear pattern of community structure with proximity to the wastewater outfall. As in last years' results, it could be argued that some of the symbols for the Allan's Beach site, which lies down-current to the Tahuna outfall, are slightly more separated from other sites (Figure 6). This separation is likely due to the high numbers of barnacles and low abundance of brown algae at this site this year. The percentage similarities (Table 6) suggest that no site is markedly different from any other site. Likewise, differences among quadrats within sites are similar to differences between sites. Just Second Beach and Victory Beach show more intra-site similarities than inter-site similarities (Table 6).

Data from past surveys suggest that the composition of species across sites is not significantly different from year to year and the fact that there is considerable overlap of symbols in Figure 6 shows that differences in community composition are generally slight. The highest percentage similarity (i.e. quadrats within the site mostly containing similar species) is at Second Beach, reasonably close to the outfall, but at Victory Beach, furthest site from the outfall, quadrats also show considerable similarity (Figure 6, Table 6).

In general, similarities in species composition between all sites surveyed in 2014 were moderate, ranging from 38.74% overlap in species (Black Head and Lawyers Head) to 49.76% (Black Head and Second Beach) (Table 6). This suggests slightly more similarity among sites this year than in 2009, 2010, 2011, 2012 and 2013, and certainly fewer differences among sites than in 2008, when the lowest similarity percentage was 11.26%. Lawyers Head this year showed somewhat less similarity with distant sites (Allan's Beach, Victory Beach) than it did last year (38.79% and 39.05% respectively), but also showed less similarity to the much closer Black Head (38.74%). Somewhat more similar to Lawyers Head were Second Beach and Boulder Beach (42.52% and 43.33% similarity respectively) (Table 6). Black Head, which lies upstream of the Tahuna outfall, this year shows moderate similarities with Second Beach, Allan's Beach and Victory Beach (Table 6). Although Black Head and Boulder Beach show the tightest grouping of symbols in Figure 6, the groups are not distinctly separated from other sites, suggesting there is a good degree of overlap in community structure from site to site (Figure 6).

Table 6. *Percentage similarity in species lists between sites in 2014. Internal similarities are shown shaded in grey. Higher values indicate that the same species are dominant at both locations assessed.*

	Black Head	Second Beach	Lawyers Head	Boulder Beach	Allan's Beach	Victory Beach
Black Head	48.92					
Second Beach	49.76	55.96				
Lawyers Head	38.74	42.52	42.85			
Boulder Beach	39.30	43.86	43.33	47.39		
Allan's Beach	40.10	43.73	38.79	43.11	43.29	
Victory Beach	47.41	48.62	39.05	44.12	43.52	52.29

At all sites the dominant species were similar, with differences in species composition being mainly due to differences in abundance or cover of species that represented only a minor component of the communities. While the 'impact' sites (Second Beach, Lawyers Head and Boulder Beach) were distinguished by higher densities of some species, Black Head also showed high densities of some animals. None of the surveyed sites had any species that were found nowhere else, nor were they missing species that were ubiquitous elsewhere. As in previous years, the green alga *Ulva lactuca* was moderately common at Lawyers head and Second Beach, but was most common this year at Black Head, and Allan's Beach. Second Beach, as usual, had the highest density of the small barnacle, *Chamaesipho columna*, but there were also very high densities of this species to be found at Alan's Beach.

Internal similarities (number of species shared between quadrats within a site) ranged from 42.85% to 55.96%. This year Second Beach and Victory Beach were the least variable sites while Lawyers Head and Allan's Beach were the most variable (Table 6). Victory Beach and Black Head showed variability within the range seen at the other beaches (Table 6).

It could be argued that there is a pattern of variability in communities close to or far from the outfall with Lawyers Head and Boulder Beach having lower indices of multivariate dispersion (IMD) than Allan's Beach and Black Head, but Victory Beach, the most distant site, also shows a lower IMD (Table 7).

Table 7. *Changes in the index of multivariate dispersion (IMD) for inter-tidal communities through time. A higher IMD value indicates more variability in the community and potentially lower environmental impact.*

Site	IMD 2004	IMD 2005	IMD 2006	IMD 2007	IMD 2008	IMD 2009	IMD 2010	IMD 2011	IMD 2012	IMD 2013	IMD 2014
Black Head	1.133	1.342	1.395	0.876	1.005	0.639	1.060	0.841	0.777	1.145	1.027
Second Beach	0.971	1.358	1.181	1.129	0.756	0.842	0.472	0.867	0.725	1.109	1.024
Lawyer's Head	1.302	0.576	0.919	1.103	0.779	0.948	1.184	0.917	0.962	0.802	0.995
Boulder Beach	0.981	0.665	0.656	0.621	0.998	0.626	0.851	0.624	0.989	0.623	0.861
Allan's Beach	1.123	0.791	0.91	0.848	1.237	1.298	1.136	1.173	1.029	1.404	1.195
Victory Beach	0.975	0.485	0.65	1.144	1.333	1.336	0.790	0.627	0.931	0.917	0.897

It is interesting to note the changes in variability from year to year (Table 7). There is no obvious pattern to this change, which suggests that differences are due to natural variability and patchiness in the distribution of species at each site, rather than effects from the outfall. Indeed, there is no significant difference in variability through time ($F_{10,55} = 0.48$; $p = 0.89$). Boulder Beach, however, traditionally shows significantly lower diversity to the other sites.

5. Conclusions

The 2014 rocky shore intertidal survey revealed diverse and healthy ecological communities along the Otago coast that are consistent with those observed in other studies along the Otago coastline (e.g., Morton & Millar 1968, Probert 1988, Gerring 1990). The communities observed this year did not differ significantly in terms of the species present or their relative abundance and cover from those observed in past surveys. The number of species found continues to be higher than found in years prior to 2004, reflecting increased effort put into taxonomy of both algae and animals, and, more specifically, the use of actual numbers rather than percentage cover in the case of some species of small animals. Overall numbers of animals this

year were not significantly different to those found last year ($F_{1,10} = 0.213$; $p = 0.655$). As in previous surveys, analysis of species patterns through time shows high variability, but there are no clear trends that can be related to the presence of the Tahuna WWTP outfall.

As in previous surveys, analysis of size frequency data and abundance of the three major species of mussels found on local rocky shores reveals no clear patterns of distribution, either through time, or with proximity to the outfall. Overall, mussel numbers are lower this year at Second Beach and Lawyers Head than observed last year. However, numbers are not outside the range seen since surveys began. Changes observed are likely due to natural variability and patchiness of distribution, random quadrats occasionally falling on locations where mussels are absent. All mussel species remain scarce at Black Head and have traditionally been low there since surveys began (Stewart 2004 – 2013). *Aulacomya* remain the least common of the three species at all sites. Overall, there are no clear patterns in mussel abundance at either of the sites closest to the outfall, or at sites located far from the outfall.

Detailed analysis of the whole community using multivariate techniques suggests that any differences between possible impact sites (Second Beach, Lawyers Head and Boulder Beach) and the other sites is statistically insignificant and there is considerable overlap in community structure among all sites Figure 6).

It could be argued that the very slightly the higher abundance of some algal species at Lawyers Head and Second Beach reflects a mild enrichment. However, percentage algal cover at Black Head and Allan's beach is also reasonably high this year (Appendix 1). In addition, high algal diversity is to be found at Black Head, Second beach and Allan's Beach too. Overall, no clear relationship exists for algal cover or richness in relation to the Tahuna outfall. It should be pointed out here that no clear relationship between nutrient enrichment and seaweed species has been established for New Zealand conditions. Generally, the differences in macro-algal species dominance from site to site are subtle, and there do not appear to be any clear-cut trends through time.

As observed in previous surveys, there are very subtle differences between inter-tidal communities at the impact sites and at other sites. However, the overall similarity in community composition and species abundance between sites is high. As in previous years variation between samples collected from within individual sites was

often greater than the variation between sites, emphasising the natural variability present. Natural variability is due to a number of factors, not least of which are nature of substrate, aspect, and exposure to wave action.

In conclusion, there is no compelling evidence of environmental damage at any site that may be attributed to wastewater discharges from the Tahuna Wastewater Treatment Plant outfall. Any effects of wastewater are no more than minor and are insignificant in comparison to the natural variation among sites and from year to year.

6. References

- Adams, N.M. 1994. *Seaweeds of New Zealand*. Canterbury University Press.
- Bayne, B.L., Addison, R.F., Capuzzo, J.M., Clarke, K.R., Gray, J.S., Moore, M.N. and Warwick, R.M. 1988. *An overview of the GEEP workshop*. Marine Ecology Progress Series 46: 235-243.
- Clarke, K.R. and Gorley, R.N., 2001. *Primer v5 - User manual/tutorial*. Primer-E, Plymouth.
- Gerring, P. 1990. *Biological survey of rocky shores at Black Head and Brighton*. Zenith Technology.
- Gerring, P. 1991. *Biological survey of rocky shores at Black Head and Brighton*. Zenith Technology.
- Morton, J E. & M. C. Miller. 1968. *The New Zealand Sea Shore*. Collins Press, London. Great Britain.
- Probert, P.K. 1988. *Biological survey of rocky shores*. Zenith Technology.
- Probert, P.K. 1989. *Biological survey of rocky shores*. Zenith Technology.
- Stewart, B. 2004. Green Island Wastewater Treatment Plant (ORC Consent 97530, Condition 8): Rocky Shore Ecological Monitoring 2004. Report to the Dunedin City Council prepared by Ryder Consulting Limited.
- Stewart, B. 2005. Green Island Wastewater Treatment Plant (ORC Consent 97530, Condition 8): Rocky Shore Ecological Monitoring 2005. Report to the Dunedin City Council prepared by Ryder Consulting Limited.
- Stewart, B. 2006. Green Island Wastewater Treatment Plant (ORC Consent 97530, Condition 8): Rocky Shore Ecological Monitoring 2006. Report to the Dunedin City Council prepared by Ryder Consulting Limited.
- Stewart, B. 2007. Green Island Wastewater Treatment Plant (ORC Consent 97530, Condition 8): Rocky Shore Ecological Monitoring 2007. Report to the Dunedin City Council prepared by Ryder Consulting Limited.
- Stewart, B. 2008. Green Island Wastewater Treatment Plant (ORC Consent 97530, Condition 8): Rocky Shore Ecological Monitoring 2008. Report to the Dunedin City Council prepared by Ryder Consulting Limited.
- Stewart, B. 2009. Green Island Wastewater Treatment Plant (ORC Consent 97530, Condition 8 and ORC Consent 2006.553, Condition 7a): Rocky Shore Ecological Monitoring 2009. Report to the Dunedin City Council prepared by Ryder Consulting Limited.
- Stewart, B. 2010. Green Island Wastewater and Tahuna Wastewater Treatment Plants (ORC Consent 97530, Condition 8 and ORC Consent 2006.553, Condition 7a):

- Rocky Shore Ecological Monitoring 2010. Report to the Dunedin City Council prepared by Ryder Consulting Limited.
- Stewart, B. 2011. Green Island Wastewater and Tahuna Wastewater Treatment Plants (ORC Consent 97530, Condition 8 and ORC Consent 2006.553, Condition 7a): Rocky Shore Ecological Monitoring 2011. Report to the Dunedin City Council prepared by Ryder Consulting Limited.
- Stewart, B. 2012. Green Island Wastewater and Tahuna Wastewater Treatment Plants (ORC Consent 97530, Condition 8 and ORC Consent 2006.553, Condition 7a): Rocky Shore Ecological Monitoring 2012. Report to the Dunedin City Council prepared by Ryder Consulting Limited.
- Stewart, B. 2013. Green Island Wastewater and Tahuna Wastewater Treatment Plants (ORC Consent 97530, Condition 8 and ORC Consent 2006.553, Condition 7a): Rocky Shore Ecological Monitoring 2013. Report to the Dunedin City Council prepared by Ryder Consulting Limited.
- Tahuna AEE 2002. Prepared for the Dunedin City Council by Montgomery Watson Harza.
- Thompson, R.M. and Ludgate, B.G. 2003. *Green Island wastewater discharge - Rocky shore monitoring*. Report to the Dunedin City Council. Ryder Consulting Limited.
- Warwick, R.M. and Clarke, K.R. 1993. *Increased variability as a symptom of stress in marine communities*. Journal of Experimental Marine Biology and Ecology 172: 215-226.
- Warwick, R.M., Platt, H.M., Clarke, K.R., Agard, J., Gobin, J. 1990. *Analysis of macrobenthic and meiobenthic community structure in relation to pollution and disturbance in Hamilton Harbour, Bermuda*. Journal of Experimental Marine Biology and Ecology 138: 119-142.

APPENDIX 1

ABUNDANCE & DIVERSITY DATA CORRECTED FOR PERCENTAGE COVER

SITES:

BLACK HEAD

SECOND BEACH

LAWYERS HEAD

BOULDER BEACH

ALLANS BEACH

VICTORY BEACH

Site: Blackhead																					TOTAL
Block	Block 1					Block 2					Block 3					Block 4					
Quadrat	1	2	3	4	5	6	7	8	9	10	11	12	13	14	15	16	17	18	19	20	
ALGAL SPECIES (% cover)																					
Brown Algae (Phaeophyta)																					
Colpomenia peregrina		1				2								2							4
Durvillaea antarctica			2	40	15				20				10					5			90
Halopteris species		3		3			3					7	2	5			3	2	3	2	30
Leathesia difformis						3		2			1		3								9
Ralfsia verrucosa				30								4		1		3					38
Splachnidium rugosum	2	2						1		1			1	2							5
Xiphophora gladiata						5	2								2			25			34
Green Algae (Chlorophyta)																					
Bryopsis plumosa				1	4		2				1		1								9
Caulerpa brownii			1											3	2					1	6
Chaetomorpha coliformis														1				1			2
Codium fragile			5											10	2					8	20
Enteromorpha species															6						6
Ulva species	5	3	1		1	8	2	18	3		1	10	10	10	4	8	8	4	15	6	115
Red Algae (Rhodophyta)																					
Ballia hirsuta	3					6					4					1		4	2	8	25
Corallina officinalis	30	15	6	15	25	15	25	15	40	4	10	20	20	30	2	15		12		15	263
Lithothamnion	2	8			1				15	7		3	4	8	3					4	45
Coralline paint (white)	2	1		1	2	4				3						1					11
Echinothamnion lyalli	4		2			2		1					3					1		6	13
Euptilota formosissima	2							2				1						4			7
Gigartina decipiens	3	10	8	10	12	2	3	10	3		3	7	7	35						7	99
Gigartina clavifera	5	7		10		3			7			15		4							39
Gigartina livida						1						4							3		8
Gelidium caulacanthum																		20			20
Jania micrarthrodia													2					1			3
Nemalion helminthoides		1										1									1
Pachymenia lusoria		5	2	18	60				7		15			1	4	45	2			2	154
Plocamium species																		3			3
Porphyra species												1							1		2
Stictosiphonia arbuscula							3		8	1					15	3	30		3		63
ANIMAL SPECIES (Numbers)																					
Amphipods				3										1							4
Epiactis thompsoni														1							1
Actinothoe albocincta	6						11			7		1	2	3			1				25
Anthopleura aureoradiata									1							3		2			6
Didemnum (orange) (% cover)							10					1									11
Cnemidocarpa bicornuta										4											4
Chamaesipho brunnea	33	33	66	33	17	17	132	66	66			66	231	17	66		33		17	99	858
Chamaesipho columna (% cover)	1070	1498	214	321	642	214	428	107		4280	5350	107	856	428	6420	856	2568		428	3210	26215
Elminius modestus	99	197		99	99	197		99			99					197	197		99		1281
Epopepla plicata	22	22		6	6		33	22	198	55	33				165	66	6		33	22	644
Sypharochiton pelliserpentis		2		1				2				1		1		1			3		9
Elamena producta							1														1
Buccinum vitatum																	1				1
Lepsiithais lacunosus		1															1				1
Austrolittorina cincta (% cover)		86								86	86				171	86	86		171		684
Margarella species		3										9	3	2				3			17
Melagraphia aethiops		3		2												2	2				6
Cellana ornata	1							1		2	2					2			1	2	10
Cellana radians						2															2
Cellana strigilis redimiculum																				1	1
Notoacmea parvicornioidea																	3				3
Notoacmea species	3	4		2	1	2				1	5	7			4	3	3	2	5		35
Patelloidea corticata	1	2		2		1			3		4			2		3			2		17
Siphonaria zelandica			1	1	1											1					3
Protothaca crassicosta							4														4
Aulacomya ater maoriana				2				1													3
Mytilus galloprovincialis		1								1											1
Perna canaliculus			2				2			3						1	1			3	11
Xenostrobus pulex (% cover)		16							1						16		8				25
Xenostrobus securis											24										24
Spirobrus spp (% cover)												1						1			1
Patiriella regularis								1													1
Number of animals/m2	4938	7474	1140	1884	3058	1730	2878	696	782	18318	22494	1304	4376	1810	27372	4882	11632	30	3036	13348	
Number algal taxa/quad	9	11	9	10	8	11	7	6	8	5	8	11	11	13	9	7	4	12	6	10	29
Number of animal taxa/quad	8	14	5	11	6	6	9	3	9	8	8	11	6	6	7	12	12	4	10	6	31
Total number of taxa/quad	17	25	14	21	14	17	16	9	17	13	16	22	17	19	16	19	16	16	16	16	60

Site: Second Beach																					TOTAL
Block	Block 1					Block 2					Block 3					Block 4					
Quadrat	1	2	3	4	5	6	7	8	9	10	11	12	13	14	15	16	17	18	19	20	
ALGAL SPECIES (% cover)																					
Brown Algae (Phaeophyta)																					
Durvillea antarctica	85	95		80	10		60		9			7							15	5	366
Halopteris species			5					7	2												14
Ralfsia verrucosa	10			4	2		5					5						7		5	38
Scytothamnus australis						3													2		5
Splachnidium rugosum						1				3					3				3		10
Green Algae (Chlorophyta)																					
Bryopsis plumosa			1					3			1							2			7
Chaetomorpha coliformis	2		1			1		1				1			1			1			7
Codium dimorphum		1																			1
Codium fragile			2						4					2							8
Enteromorpha species					2		1			4		1								1	9
Ulva species			12		2	4		5	5	8	2	3			10			1	4	1	56
Red Algae (Rhodophyta)																					
Ballia hirsuta					4		3		5										2		14
Chondria macrocarpa												2									2
Corallina officinalis	7	30	12	5	8		4	15	10	3	3	12		5				25		3	142
Lithothamnion	15	25	4	5	2			5	2	2	3		4					3			70
Corraline paint (white)		2	1	2					1									1			7
Echinothamnion lyalli		3																	4		7
Euphiota formosissima		3								3					2						8
Gigartina decipiens			10					10	2			5		5		2		2			36
Gigartina clavifera		2										5						3			10
Gigartina livida		4								2											6
Gigartina ancistrocladia					1					5										1	7
Gelidium pusillum				4				4				4									12
Gelidium caulacanthum									5					12							17
Iridaea species		4										3									7
Jania micrarthrodia														3							3
Nemalion helminthoides															1						1
Pachymenia lusoria	4		7	7	20		7	7	7	3	1	5						40		7	115
Plocamium species														1							1
Porphyra species													1			1	1				3
Stictosiphonia arbuscula			7			4	5		1	8	5		12		1	6	8	4	12	10	83
ANIMAL SPECIES (Numbers)																					
Amphipods																					
Epiactus thompsoni				1						1											1
Oulactis mucosa					1																1
Actinothoe albocincta					6							3				2					14
Isactinia olivacea										1											1
Chamaesipho brunnea		99			33				33	99					99	165			99		627
Chamaesipho columna (% cover)	1712	856	214	2782	428	642	428	1070	642	428	2568	642	6420	1498	2140	12840	5992	856	8560	3210	53928
Elminius modestus	197		197	99		197	197	197	99		394	394	197			296	591		197	394	3645
Epopeia plicata	6	11	11		6	275	11	88	88	88	110	11	220	110	88	11	132		220	22	1507
Mitella spinosa													39				2			6	47
Plaxiphora oblecta					1																1
Sypharochiton pelliserpentis	1			2				2					4			1					10
Diloma nigerrima																1		3			4
Lepsiithais lacunosus					2	2															4
Austrolittorina cincta (% cover)					86	86	86	342		86	171	86	257		86	257					1539
Margarella species					5					3					1			1			10
Melagraphia aethiops		3						3													6
Paratrophon patens													1								1
Lepsiella					1					1							1				3
Limpets								1					1								2
Cellana ornata	1				1	1	2				2			1						2	10
Cellana radians	2				2		1						1					1		2	9
Cellana strigilis redimiculum	2												1							3	6
Notoacmea parvicornioidea			1															3			4
Notoacmea species	4		3	2		1	3	3				1	5			2		3		2	29
Patelloidea corticata	5			1	1	4	1				4					1	2		1	1	21
Siphonaria zelandica	2	3		5	1							1		2					3	3	20
Protothaca crassicostra			2					4					1								7
Aulacomys ater maoriana	1						1					2								13	17
Modiolus neozelandicus						1					1										2
Mytilus galloprovincialis		3	16		13			30		3		2	43		4		7			13	134
Perna canaliculus	17	19	20		45	26	5	37		24	15	17	3		10		2				240
Xenostrobus pulex (% cover)	61					41		16		16	9				48				16	32	239
Xenostrobus securis						32					24					16					72
Pomatoceros caeruleus (% cover)					1																1
Spirorbis spp (% cover)								1													1
Starfish	1																				1
Nudibranch		1																			1
Haliotis iris																					
Number of animals/m2	8046	3980	1856	11566	2528	5230	2946	7168	3446	3006	13192	4638	28766	6840	10174	53696	26916	3468	36384	14812	
Number algal taxa/quad	6	10	11	7	9	5	7	9	12	10	6	12	3	7	5	3	2	11	7	8	31
Number of animal taxa/quad	14	8	8	7	17	12	10	14	4	12	10	11	13	5	9	9	8	6	7	13	37
Total number of taxa/quad	20	18	19	14	26	17	17	23	16	22	16	23	16	12	14	12	10	17	14	21	68

Site: Lawyers head																					
Block	Block 1					Block 2					Block 3					Block 4					TOTAL
Quadrat	1	2	3	4	5	6	7	8	9	10	11	12	13	14	15	16	17	18	19	20	
ALGAL SPECIES (% cover)																					
Brown Algae (Phaeophyta)																					
Durvillaea antarctica	70	80	75	48	40	20	15	45	25	80		45		20	5					7	575
Halopteris species																			2		2
Ralfsia verrucosa						3				2					1		1			5	12
Splachnidium rugosum										2							7		1		10
Green Algae (Chlorophyta)																					
Bryopsis plumosa																	5	1			6
Enteromorpha species																1				2	3
Ulva species		2	1	2		2	2	1	2		7	2			3	1	12	1	3	3	44
Red Algae (Rhodophyta)																					
Corallina officinalis	3	3	3	3	3	15	25	4	8	2	2	10	7	2	5	3		2	40	2	142
Lithothamnion	55		2	15	5	5	30	20	8	9		15	5	25	7	1		3		2	207
Lithophyllum		7			3					5										3	18
Coralline paint (white)	7	2	2	7	4	3	10	15	8	5		15	8	3							89
Echinothamnion lyalli														3							3
Gigartina decipiens																			9		9
Gigartina clavifera																			7		7
Gelidium pusillum														2							2
Iridaea species																			4		4
Jania micrarthrodia														1							1
Nemalion helminthoides																	2				2
Pachymenia lusoria	2		5		5	18	4	1				8	15		8					7	73
Plocamium species																				1	1
Stictosiphonia arbuscula																12					12
ANIMAL SPECIES (Numbers)																					
Amphipods		3																			3
Epiactis thompsoni														1							1
Oulactis mucosa																2			2		4
Actinothoe albocincta																			1		1
Anthopleura aureoradiata																3	1	2			6
Chamaesipho brunnea			17		66		33					33		132	99	132	33		33		578
Chamaesipho columna (% cover)	321	107			428	428	214	214			856	428	428	3210	107	1712	1498	2568	1284	3210	17013
Elminius modestus											197		99			197	99				591
Epopepla plicata		11	55			22	44				110	33	110		55	110	165	253		6	974
Acanthochitona zelandica								1													1
Chiton glaucus					6										4						10
Eudoxochiton nobilis	1	2			1			1													4
Sypharochiton pelliserpentis	14		1		2	2	1	8	2	1			7	1	5	3			3	1	37
Austrolittorina cincta (% cover)			171								86					257	342	257			1112
Margarella species						1					2						2				5
Limpets			3					2					11					3			19
Cellana ornata		3	1	1	3		1	1	5		3		1	5	3	3	1	1	4	1	37
Cellana radians				1	1			3			2				2	1		1	1	1	13
Cellana strigilis redimiculum					1																1
Notoacmea parvicornioidea			2					1					3								6
Notoacmea species		3	1	2		5	3	5			3	3	4	1		1					31
Patelloidea corticata	4	2			13	2	2	4	3		5	3	3	1	4	16	2		1	1	62
Siphonaria zelandica	5	4			3	3	7		3		1	1			1				2		25
Aulacomya ater maoriana			4			3		2					2								10
Modiolus neozelanicus	30			1	28				5	3					7						44
Mytilus galloprovincialis	7		14		1	10		1			8		11			1		7			53
Perma canaliculus						10					8	13				1		9			41
Xenostrobus pulex (% cover)	48	16	48	160	288		16	8	16	640	8		16		480	24	24	16			1760
Xenostrobus securis																24					24
Number of animals/m2	436	1460	1694	660	3364	1944	1296	986	140	2608	5174	2004	2776	13404	3068	9944	8666	12474	5316	12878	
Number algal taxa/quad	5	5	6	5	6	7	6	6	5	6	3	6	4	7	6	5	5	4	7	9	21
Number of animal taxa/quad	7	9	12	5	13	10	10	11	7	4	13	6	12	7	11	16	10	11	8	6	28
Total number of taxa/quad	12	14	18	10	19	17	16	17	12	10	16	12	16	14	17	21	15	15	15	15	49

Site: Boulder Beach																					TOTAL
Block	Block 1					Block 2					Block 3					Block 4					
Quadrat	1	2	3	4	5	6	7	8	9	10	11	12	13	14	15	16	17	18	19	20	
ALGAL SPECIES (% cover)																					
Brown Algae (Phaeophyta)																					
Durvillaea antarctica	15	80	80	50	3		10	7	5	10		15	5	8	80		7				375
Myriogloea intestinalis		1																			1
Ralfsia verrucosa				1													2				3
Splachnidium rugosum						2															2
Green Algae (Chlorophyta)																					
Bryopsis plumosa						2												2			4
Codium dimorphum		3	1	3								1		2			2				12
Enteromorpha species					2																2
Ulva species	1				3	7	1			5							1		2		20
Red Algae (Rhodophyta)																					
Ballia hirsuta	1			1							3					3	2				10
Corallina officinalis	6				20	15	14	5	4	3		7	5	2	3	100			5		189
Lithothamnion	40		45	70			6		75	8	5			2	40				3	4	298
Lithophyllum																	1				1
Coralline paint (white)	55		6		1			20	4				20	85					3		194
Gigartina decipiens												4									4
Gigartina livida																	1				1
Gelidium pusillum		2															2				4
Nemalion helminthoides										3	2				1						6
Pachymenia lusoria	18	5	12	5	7	3	8	5	8	3		3	10	2	40		8		4		141
Stictosiphonia arbuscula				1			2				2	1		3			8	5	2		24
ANIMAL SPECIES (Numbers)																					
Oulactis mucosa			1													1				3	5
Actinothoe albocincta																3					3
Chamaesipho brunnea	33	45		99	165	198			165	99		212	66		17		324	66	231	99	1741
Chamaesipho columna (% cover)	321	247		107	214	321	351	214	428	428	2140	315	1712		2568		644	428	1498	214	11582
Elminius modestus		68				197	126	99									54	591			1067
Epopepla plicata	17	55	17		55	33	34	770		55	385	33	110		6		31	715	33	33	2309
Mitella spinosa								1		15							18	75		23	132
Chiton glaucus		2			1		2					1			27						31
Plaxiphora oblecta																	1				1
Eudoxochiton nobilis							1														1
Sypharochiton pelliserpentis	3		2	3	3		2	2	1		3	2	13		6		2	3			42
Lepidithais lacunosus																				1	1
Austrolittorina cincta (% cover)	171	84			171	257	123	342		86	342	23	257		86		94	257		86	2121
Margarella species		1					2								1		2				5
Limpets		2					3					1					2				6
Cellana ornata	2	5	1		1	2	1		3	2		2	2	2	1			1	2		20
Cellana radians	1		1		1				1	1			1		1			3	1		10
Cellana strigilis redimiculum														2					1		3
Notoacmea parvicornioidea		2										2					1				3
Notoacmea species	4	5		2					1	2		3		1	1						10
Patelloidea corticata	2	2		5	3	4	3		4	4	7		1	3	3		1	4			42
Siphonaria zelandica	1			3	1				2	4			2	4	7			2			25
Protothaca crassicauda												2									2
Aulacomya ater maoriana		2					3		1		4						5				13
Modiolus neozelanicus			10	2		20		30	4	1	15		10		3			10	3	7	115
Mytilus galloprovincialis		1			1	12				1	2	11			1					5	33
Perna canaliculus		49			1	4				14		7				2				3	31
Xenostrobus pulex (% cover)	16	2	24	144	112	112	6	128	192	80	16	1	48	192	64		403	24	144	1040	2730
Spirorbis spp (% cover)																	1				1
Number of animals/m2	2282	2296	222	1460	2916	4638	2628	6338	3208	3110	11700	2476	8886	816	11162	24	6330	8714	7652	6054	
Number algal taxa/quad	7	5	5	7	6	5	6	4	5	6	4	6	4	7	5	2	10	2	6	1	19
Number of animal taxa/quad	11	17	7	8	13	11	13	7	11	14	9	15	11	6	15	3	15	13	8	11	29
Total number of taxa/quad	18	22	12	15	19	16	19	11	16	20	13	21	15	13	20	5	25	15	14	12	48

Site: Allan's Beach																					
Block	Block 1					Block 2					Block 3					Block 4					TOTAL
Quadrat	1	2	3	4	5	6	7	8	9	10	11	12	13	14	15	16	17	18	19	20	
ALGAL SPECIES (% cover)																					
Brown Algae (Phaeophyta)																					
Cladostephus spongioides																					
Durvillaea antarctica	2	30			25	15	8		20	7	45	5		13	40		1				210
Leathesia difformis																		1			1
Myriogloea intestinalis																	1				1
Ralfsia verrucosa															2						2
Splachnidium rugosum																			2		2
Green Algae (Chlorophyta)																					
Bryopsis plumosa			1				1							3			1	2			7
Chaetomorpha coliformis		1			1					1						1			1		5
Codium dimorphum										2											2
Codium fragile										2						3	1	3	7	1	17
Enteromorpha species																				2	2
Ulva species	5			1	1		1	40	2	1	1		10			75	15	7	3	1	162
Red Algae (Rhodophyta)																					
Ballia hirsuta						3					11			2		2					18
Corallina officinalis	10	35	3	20	40		40	7	10	65	20	3	15	30	12		5	20	2	15	352
Lithothamnion	7	12	5	10		90	25	25	10	3	85	55	7	20	35				3	1	393
Coralline paint (white)							10											1			17
Echinothamnion lyalli				1						4						6			3		14
Euptilota formosissima								3										1	3		7
Gigartina clavifera		2			3									1						1	7
Gigartina livida		8			3																11
Gelidium pusillum	3			7		7		5			2		2					2			28
Gelidium caulacanthum														4							4
Hymenena durvillaei				2					1												3
Iridaea species		3																			3
Nemalion helminthoides																		1			1
Pachymenia lusoria		11			15	15	15		2		7	5		10	4				1		85
Plocamium species									1									4			5
Porphyra species																15	1	2	5	1	24
Stictosiphonia arbuscula	2					3		1		1	2			3	7		3				22
ANIMAL SPECIES (Numbers)																					
Amphipods									1	2	2					3					8
Epiactis thompsoni		4				2		1	2				23						1		29
Oulactis mucosa			3		4	1				2		3			4		11			15	43
Actinia tenebrosa		14	3					3	2												8
Actinothoe albocincta		18		38	2			5	62			2	17	7							133
Anthopleura aureoradiata		9	7						4	3					2						16
Didemnum (orange) (% cover)					7																7
Chamaesipho brunnea	66	66								99			50		66		17		264	99	594
Chamaesipho columna (% cover)	428	1284	2		214		214	214	214	428	2140	428	321	1498	1498	107	107	321	214	428	8348
Elminius modestus	197		1				197	197	99			197		197	197				99	591	1774
Epopella plicata	88	11	50	33	11		77	275		44	33	143	66	55	88		11		11	22	919
Mitella spinosa	45		10					7	1			2	3		2						25
Cryptoconchus porosus					1					1											2
Eudoxochiton nobilis				1																	1
Sypharochiton pelliserpentis	2	2	4	2		4	1			2	8		2	1	1						25
Buccinulum vitatum				5																	5
Austrolittorina cincta (% cover)	257		2	86			257	257		342		86	257	171	257	86	257	257	342	171	2824
Margarella species				4						3		2	3		4		2	1		1	20
Lepsiella																			1		1
Limpets							1					1									2
Cellana ornata	1	1				2		3			3	3		1	4					1	17
Cellana radians		2				1					1	1			1					1	5
Cellana strigilis redimiculum						3					1									1	5
Notoacmea parvicornioidea							1														1
Notoacmea species		1				7	3			1	2	7			1		2		1	1	25
Patelloidea corticata	1					5	2			2		4	2	7	1			1			24
Siphonaria zelandica	1				2	3		1		3			2	5	3						19
Protothaca crassicoستا				4			2					3									9
Aulacomys ater maoriana	2				18							4					10				32
Modiolus neozelanicus	30		1					1			20				4				3		29
Mytilus galloprovincialis	10				3		11			2		2			2						20
Perna canaliculus	1				2						2	4			4						12
Xenostrobus pulex (% cover)	16		1					16		32	16		16	32	400	16	32		432	320	1313
Xenostrobus securis	47		1										47					47		94	189
Pomatoceros caeruleus (% cover)								1													1
Spirorbis spp (% cover)								2					1								2
Bryozoan												2									2
Nudibranch				2																	2
Number of animals/m2	4766	5648	356	678	1056	112	3062	3928	1538	3864	8912	3572	3234	7896	10154	846	1792	2506	5470	6980	
Number algal taxa/quad	6	8	3	4	9	6	7	6	7	9	8	5	5	9	6	6	8	10	11	7	29
Number of animal taxa/quad	16	11	13	8	10	9	11	14	8	15	11	18	14	10	19	4	9	5	10	13	37
Total number of taxa/quad	22	19	16	12	19	15	18	20	15	24	19	23	19	19	25	10	17	15	21	20	66

Ryder Consulting

APPENDIX 2

MUSSEL ABUNDANCE AND SIZE FREQUENCY DATA

SITES:

BLACK HEAD

SECOND BEACH

LAWYERS HEAD

BOULDER BEACH

ALLANS BEACH

VICTORY BEACH

Site	Species	Size class	Frequency
Black Head	<i>Aulacomya ater maoriana</i>	<2	0.2
		2-4	0.4
		4-8	0
		>8	0
Second Beach	<i>Aulacomya ater maoriana</i>	<2	1.6
		2-4	1.4
		4-8	0.4
		>8	0
Lawyers Head	<i>Aulacomya ater maoriana</i>	<2	0.6
		2-4	1.6
		4-8	0
		>8	0
Boulder Beach	<i>Aulacomya ater maoriana</i>	<2	1.2
		2-4	1.4
		4-8	0.4
		>8	0
Allan's Beach	<i>Aulacomya ater maoriana</i>	<2	2.4
		2-4	3.4
		4-8	1
		>8	0
Victory Beach	<i>Aulacomya ater maoriana</i>	<2	0.2
		2-4	0.4
		4-8	0
		>8	0

Site	Species	Size class	Frequency
Black Head	<i>Mytilus galloprovincialis</i>	<2	0
		2-4	0.2
		4-8	0.2
		>8	0
Second Beach	<i>Mytilus galloprovincialis</i>	<2	2.4
		2-4	10.4
		4-8	13.8
		>8	0.2
Lawyers Head	<i>Mytilus galloprovincialis</i>	<2	1.4
		2-4	4.2
		4-8	5.4
		>8	1
Boulder Beach	<i>Mytilus galloprovincialis</i>	<2	1.2
		2-4	3.2
		4-8	2.4
		>8	0
Allan's Beach	<i>Mytilus galloprovincialis</i>	<2	0.2
		2-4	2.8
		4-8	2
		>8	1
Victory Beach	<i>Mytilus galloprovincialis</i>	<2	0.8
		2-4	1
		4-8	0.4
		>8	0

Site	Species	Size class	Frequency
Black Head	<i>Perna canaliculus</i>	<2	0
		2-4	0.2
		4-8	1.2
		>8	1.2
Second Beach	<i>Perna canaliculus</i>	<2	0.2
		2-4	7.2
		4-8	12
		>8	28.6
Lawyers Head	<i>Perna canaliculus</i>	<2	0
		2-4	0.4
		4-8	2.8
		>8	5
Boulder Beach	<i>Perna canaliculus</i>	<2	1
		2-4	3.2
		4-8	4.2
		>8	7.6
Allan's Beach	<i>Perna canaliculus</i>	<2	0
		2-4	1
		4-8	1.4
		>8	0.2
Victory Beach	<i>Perna canaliculus</i>	<2	0
		2-4	1.2
		4-8	5.6
		>8	19.2