

WOODHAUGH GARDENS PLAYSPACE

DUNEDIN NORTH, ŌTEPOTI

bespoke
LANDSCAPE ARCHITECTS


Aukaha



DUNEDIN | kaunihera
CITY COUNCIL | a-rohe o
Ōtepoti

CONCEPT DESIGN

NOVEMBER 2023



NOTE

This schematic concept for Woodhaugh Gardens and associated character imagery serves to give an indication of development potential, the range of activities, experiences and elements.

It is noted that patterns and colours are indicative only as placemarkers for further refinement. Mātauraka Kāi Tahu will inform the design outcomes of this play space in design development creating the opportunity for mana whenua values and stories to be integrated into the overall experience for tamariki and adults alike.

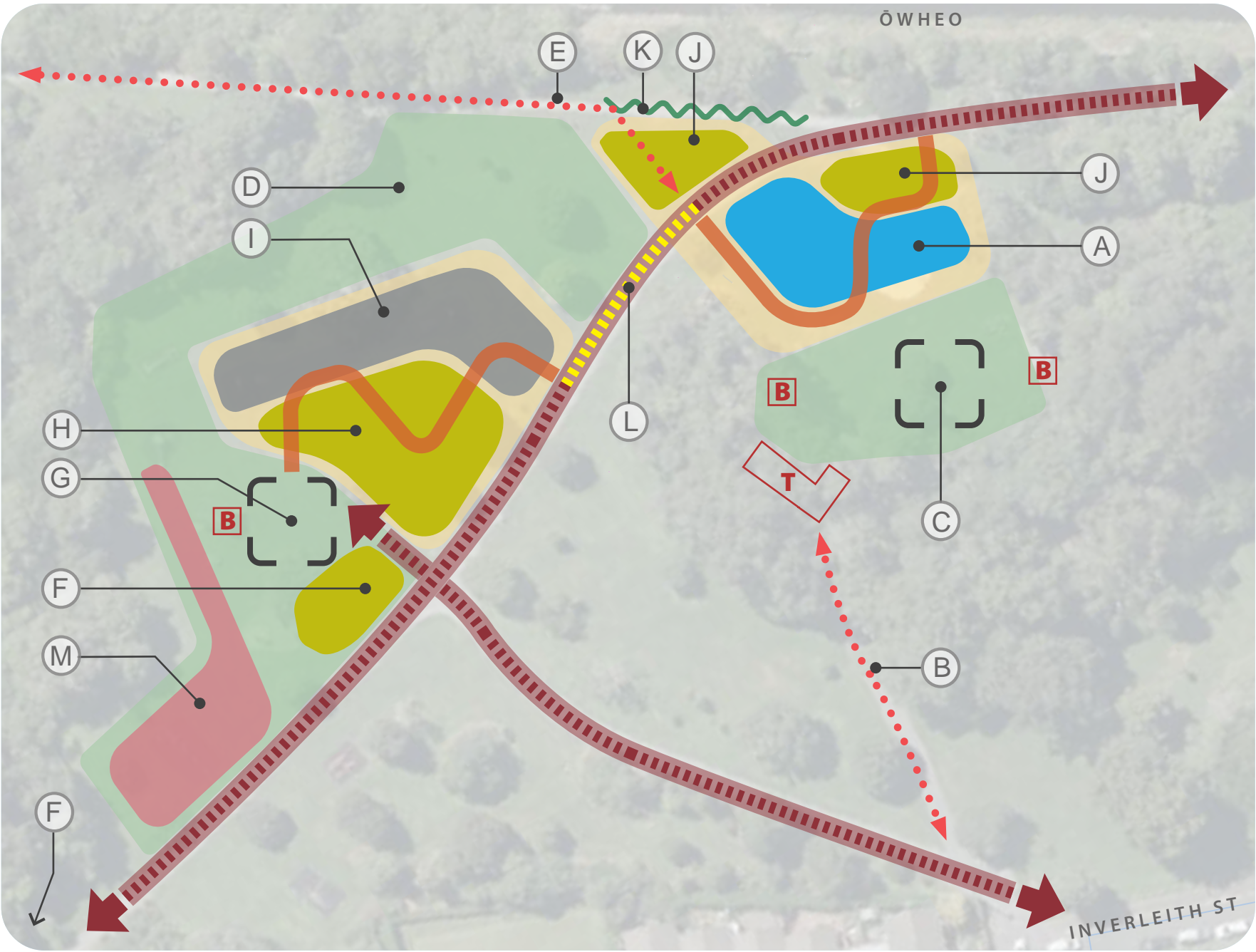
Overall, the proposed approach and commentary below focuses on retaining and elevating key elements, embracing woodland and ecological potential for exploration play, and consolidation of play experiences in a manner that complements flexible grassed open space provision within identified spatial framework.

- (A) Redevelop this area to improve range of experiences and play value adjacent primary social/gathering hub in tandem with provision of engaging low flow water play referencing Ōwheo (Water of Leith) that once flowed through this area.
- (B) Proposed gateway connection to social gathering and water play area
- (C) Proposed central gathering node with good surveillance over play area and access to existing toilet facility, amenities and grassed open space. Potential for enhancement of spill out and picnic opportunities adjacent to play and of existing infrastructure with improvement of seating provision.
- (D) Retain flexible grassed open space and potential to accommodate a range of recreational activities.
- (E) Opportunities to redirect a short section of the upper Leith walkway to improve relationship and activation with the main recreational spaces.
- (F) Opportunities to incorporate informal play elements encouraging play along the way in association with BBQ and social area.
- (G) Enhance social gathering area adjacent to existing BBQ facility and proposed play activities with seating and amenities.
- (H) Proposed nature/exploratory play area leveraging off existing vegetation and ecological elements to provide a range of experiences and activities including sensory and interactive play elements. The proposed location adjacent to more adventurous play provision enables opportunities for younger children to play along side the older more confident age group.
- (I) Appropriately themed play equipment and experiences for the older age range including retention of existing flying fox and potential integration of a range of development based climbing, balance, jumping, agility elements to promote adventurous play experiences. To compliment nature play, it is also anticipated this could include creative (games / role play) play elements with features that celebrate the unique history of the reserve.
- (J) Proposed nature play elements within planting for informal play opportunities and connectivity to compliment water play and elevate natural setting.
- (K) Enhance amenity planting between playspace and the river boundary.
- (L) Opportunities for playful surface treatment and linemarking for creative play on main accessible footpath connection between the playspaces.
- (M) Opportunities to integrate informal play and seating elements adjacent to existing mature bush and proposed gathering area to provide playful social spill out area adjacent BBQ area.

AGE RANGE



PLAY TYPOLOGIES



- ZONES**
- Toddler/Water play
 - Nature/Exploratory play
 - Adventurous play
 - Informal/social play
- KEY**
- Primary footpath connection
 - Primary footpath connection (creative)
 - Secondary footpath connection
 - Accessible circulation through playspace
 - Planting buffer
 - Gathering/social nodes
 - Te Ao Māori / Main playspace areas
 - Flexible grass open space
 - Existing BBQ facilities
 - Existing Toilet facilities

TODDLER / WATER PLAY



ADVENTUROUS / SOCIAL PLAY



NATURE / EXPLORATORY PLAY



SOCIAL GATHERING/OPEN SPACE



MAHI TOI OPPORTUNITY





01. Multi functional play tower with 3m tall tube slides and 1m tall open double slide with 2m high rope climb, nets and platforms. Opportunity for cultural narrative and design on perforated panels
02. Flexible grassed spill out area
03. Low native enhancement planting
04. Sculptural swing set with 1no. toddler bucket seat and 1no. belt seat with wetpour rubber surface banding for all ability access
05. Proposed pathway realignment
06. Retain existing planting in this area
07. Proposed 'dry stream' bed with log crossings for informal play connection
08. At grade boardwalk crossings to playspace for all ability access
09. Low native 'riparian' planting to 'stream' with localised boulders
10. Social inclusive spinning carousel on wetpour rubber surfacing
11. Interactive seed head sculpture and fog misters
12. Water pump and collection container with interactive controlled valve release to 'ripple pad'.
13. Radial ripple pad and 'puddle' jump with slow release to 'stream'
14. Containment basin with interactive valve release to enable the creation of a shallow pool in the 'stream'
15. 'Ephemeral' stream section activated when water is released from collection basins and shallow pool
16. Central 'leafy' shade sculpture with interactive fog misters
17. Containment basin with interactive valve release to enable the creation of an eddy in the 'stream'
18. Shallow containment basin with rill channel to create 'stream eddy'
19. Proposed 'dry stream' bed and natural play with 'ripple pad'.
20. 'Streamside' jump zone with inclusive trampolines in social arrangement
21. 'Bug' rockers on wetpour rubber surfacing
22. Musical interactive harmony bells on wetpour rubber surfacing for all ability access
23. Proposed specimen shade tree to provide additional shade to seating and open grass area
24. Proposed creative banding/Mana Whenua motifs with potential to incorporate interactive patterning / games and play along the way in transition to social / exploratory agility play area

NOTES

01. Flexible grassed spill out area
02. Potential social seating beneath existing trees
03. Upgrade existing flying fox to double run and addition of platform to improve play and social value of this element with opportunity to resurface wetpour rubber surfacing
04. New removable shade canopies to improve shade
05. Existing BBQ structure to be retained
06. Extend pavement and additions of picnic tables adjacent to existing structure to improve function
07. Satellite picnic tables with concrete surround to improve capacity of this area to accommodate several groups of users
08. Retain and enhance existing planting in this area
09. Proposed new pathway connection to existing BBQ structure /proposed playspace with opportunity to include leaf press or insects graphic inserts or Mana Whenua motifs to pavement
10. Interactive 'bug' sculptures to compliment insect hotels and to encourage creative play
11. Proposed location of insect hotels designed to accommodate a range of invertebrate critters
12. Exploration agility walk comprised of stepping elements and beams in association with existing trees and planting
13. Sculptural talking tubes (2 no. pairs) complement agility walk and exploratory experience
14. Proposed 'seed pod' stepping elements associated with exploratory agility walk
15. Hip hop spinning see saw on wetpour rubber surfacing
16. Proposed creative banding/Mana Whenua motifs with potential to incorporate interactive patterning / games and play along the way in transition to junior / water play area
17. Proposed inclusive social basket swing on wetpour rubber surfacing for all ability access
18. Climbing net structure associated with agility walk in bark softfall



V01



